



American Diabetes Association

10. Cardiovascular Disease and Risk Management: *Standards of Medical Care in Diabetes—2020*

Diabetes Care 2020;43(Suppl. 1):S111–S134 | <https://doi.org/10.2337/dc20-s010>

The American Diabetes Association (ADA) “Standards of Medical Care in Diabetes” includes the ADA’s current clinical practice recommendations and is intended to provide the components of diabetes care, general treatment goals and guidelines, and tools to evaluate quality of care. Members of the ADA Professional Practice Committee, a multidisciplinary expert committee (<https://doi.org/10.2337/dc20-SPPC>), are responsible for updating the Standards of Care annually, or more frequently as warranted. For a detailed description of ADA standards, statements, and reports, as well as the evidence-grading system for ADA’s clinical practice recommendations, please refer to the Standards of Care Introduction (<https://doi.org/10.2337/dc20-SINT>). Readers who wish to comment on the Standards of Care are invited to do so at professional.diabetes.org/SOC.

For prevention and management of diabetes complications in children and adolescents, please refer to Section 13 “Children and Adolescents” (<https://doi.org/10.2337/dc20-S013>).

Atherosclerotic cardiovascular disease (ASCVD)—defined as coronary heart disease (CHD), cerebrovascular disease, or peripheral arterial disease presumed to be of atherosclerotic origin—is the leading cause of morbidity and mortality for individuals with diabetes and results in an estimated \$37.3 billion in cardiovascular-related spending per year associated with diabetes (1). Common conditions coexisting with type 2 diabetes (e.g., hypertension and dyslipidemia) are clear risk factors for ASCVD, and diabetes itself confers independent risk. Numerous studies have shown the efficacy of controlling individual cardiovascular risk factors in preventing or slowing ASCVD in people with diabetes. Furthermore, large benefits are seen when multiple cardiovascular risk factors are addressed simultaneously. Under the current paradigm of aggressive risk factor modification in patients with diabetes, there is evidence that measures of 10-year coronary heart disease (CHD) risk among U.S. adults with diabetes have improved significantly over the past decade (2) and that ASCVD morbidity and mortality have decreased (3,4).

Heart failure is another major cause of morbidity and mortality from cardiovascular disease. Recent studies have found that rates of incident heart failure hospitalization (adjusted for age and sex) were twofold higher in patients with diabetes compared with those without (5,6). People with diabetes may have heart failure with preserved ejection fraction (HFpEF) or with reduced ejection fraction (HFrEF). Hypertension is often a precursor of heart failure of either type, and ASCVD can coexist with either type (7), whereas prior myocardial infarction (MI) is often a major factor in HFrEF. Rates of heart failure hospitalization have been improved in recent trials including patients with type 2 diabetes, most of whom also had ASCVD, with sodium–glucose cotransporter 2 (SGLT2) inhibitors (8–10).

For prevention and management of both ASCVD and heart failure, cardiovascular risk factors should be systematically assessed at least annually in all patients

This section has received endorsement from the American College of Cardiology.

*Suggested citation: American Diabetes Association. 10. Cardiovascular disease and risk management: Standards of Medical Care in Diabetes—2020. *Diabetes Care* 2020;43(Suppl.1): S111–S134*

© 2019 by the American Diabetes Association. Readers may use this article as long as the work is properly cited, the use is educational and not for profit, and the work is not altered. More information is available at <http://www.diabetesjournals.org/content/license>.

with diabetes. These risk factors include obesity/overweight, hypertension, dyslipidemia, smoking, a family history of premature coronary disease, chronic kidney disease, and the presence of albuminuria. Modifiable abnormal risk factors should be treated as described in these guidelines.

THE RISK CALCULATOR

The American College of Cardiology/American Heart Association ASCVD risk calculator (Risk Estimator Plus) is generally a useful tool to estimate 10-year ASCVD risk (available online at tools.acc.org/ASCVD-Risk-Estimator-Plus). The calculator includes diabetes as a risk factor, since diabetes itself confers increased risk for ASCVD, although it should be acknowledged that these risk calculators do not account for the duration of diabetes or the presence of diabetes complications, such as albuminuria. Although some variability in calibration exists in various subgroups, including by sex, race, and diabetes, the overall risk prediction does not differ in those with or without diabetes (11–14), validating the use of risk calculators in people with diabetes. The 10-year risk of a first ASCVD event should be assessed to better stratify ASCVD risk and help guide therapy, as described below.

Recently, risk scores and other cardiovascular biomarkers have been developed for risk stratification of secondary prevention patients (i.e., those who are already high risk because they have ASCVD) but are not yet in widespread use (15,16). With newer, more expensive lipid-lowering therapies now available, use of these risk assessments may help target these new therapies to “higher risk” ASCVD patients in the future.

HYPERTENSION/BLOOD PRESSURE CONTROL

Hypertension, defined as a sustained blood pressure $\geq 140/90$ mmHg, is common among patients with either type 1 or type 2 diabetes. Hypertension is a major risk factor for both ASCVD and microvascular complications. Moreover, numerous studies have shown that antihypertensive therapy reduces ASCVD events, heart failure, and microvascular complications. Please refer to the American Diabetes Association (ADA) position statement “Diabetes and Hypertension” for a detailed review of the

epidemiology, diagnosis, and treatment of hypertension (17).

Screening and Diagnosis

Recommendations

- 10.1** Blood pressure should be measured at every routine clinical visit. Patients found to have elevated blood pressure ($\geq 140/90$ mmHg) should have blood pressure confirmed using multiple readings, including measurements on a separate day, to diagnose hypertension. **B**
- 10.2** All hypertensive patients with diabetes should monitor their blood pressure at home. **B**

Blood pressure should be measured at every routine clinical visit by a trained individual and should follow the guidelines established for the general population: measurement in the seated position, with feet on the floor and arm supported at heart level, after 5 min of rest. Cuff size should be appropriate for the upper-arm circumference. Elevated values should be confirmed on a separate day. Postural changes in blood pressure and pulse may be evidence of autonomic neuropathy and therefore require adjustment of blood pressure targets. Orthostatic blood pressure measurements should be checked on initial visit and as indicated.

Home blood pressure self-monitoring and 24-h ambulatory blood pressure monitoring may provide evidence of white coat hypertension, masked hypertension, or other discrepancies between office and “true” blood pressure (17). In addition to confirming or refuting a diagnosis of hypertension, home blood pressure assessment may be useful to monitor antihypertensive treatment. Studies of individuals without diabetes found that home measurements may better correlate with ASCVD risk than office measurements (18,19). Moreover, home blood pressure monitoring may improve patient medication adherence and thus help reduce cardiovascular risk (20).

Treatment Goals

Recommendations

- 10.3** For patients with diabetes and hypertension, blood pressure targets should be individualized through a shared decision-

making process that addresses cardiovascular risk, potential adverse effects of antihypertensive medications, and patient preferences. **C**

- 10.4** For individuals with diabetes and hypertension at higher cardiovascular risk (existing atherosclerotic cardiovascular disease [ASCVD] or 10-year ASCVD risk $\geq 15\%$), a blood pressure target of $<130/80$ mmHg may be appropriate, if it can be safely attained. **C**
- 10.5** For individuals with diabetes and hypertension at lower risk for cardiovascular disease (10-year atherosclerotic cardiovascular disease risk $<15\%$), treat to a blood pressure target of $<140/90$ mmHg. **A**
- 10.6** In pregnant patients with diabetes and preexisting hypertension, a blood pressure target of $\leq 135/85$ mmHg is suggested in the interest of reducing the risk for accelerated maternal hypertension **A** and minimizing impaired fetal growth. **E**

Randomized clinical trials have demonstrated unequivocally that treatment of hypertension to blood pressure $<140/90$ mmHg reduces cardiovascular events as well as microvascular complications (21–27). Therefore, patients with type 1 or type 2 diabetes who have hypertension should, at a minimum, be treated to blood pressure targets of $<140/90$ mmHg. The benefits and risks of intensifying antihypertensive therapy to target blood pressures lower than $<140/90$ mmHg (e.g., $<130/80$ or $<120/80$ mmHg) have been evaluated in large randomized clinical trials and meta-analyses of clinical trials. Notably, there is an absence of high-quality data available to guide blood pressure targets in type 1 diabetes.

Randomized Controlled Trials of Intensive Versus Standard Blood Pressure Control

The Action to Control Cardiovascular Risk in Diabetes Blood Pressure (ACCORD BP) trial provides the strongest direct assessment of the benefits and risks of intensive blood pressure control among people with type 2 diabetes (28). In ACCORD BP, compared with standard blood

pressure control (target systolic blood pressure <140 mmHg), intensive blood pressure control (target systolic blood pressure <120 mmHg) did not reduce total major atherosclerotic cardiovascular events but did reduce the risk of stroke, at the expense of increased adverse events (Table 10.1). The ACCORD BP results suggest that blood pressure targets more intensive than <140/90 mmHg are not likely to improve cardiovascular outcomes among most people with type 2 diabetes but may be reasonable for patients who may derive the most benefit and have been educated about added treatment burden, side effects, and costs, as discussed below.

Additional studies, such as the Systolic Blood Pressure Intervention Trial (SPRINT) and the Hypertension Optimal Treatment (HOT) trial, also examined effects of intensive versus standard control (Table 10.1), though the

relevance of their results to people with diabetes is less clear. The Action in Diabetes and Vascular Disease: Preterax and Diamicon MR Controlled Evaluation–Blood Pressure (ADVANCE BP) trial did not explicitly test blood pressure targets (29); the achieved blood pressure in the intervention group was higher than that achieved in the ACCORD BP intensive arm and would be consistent with a target blood pressure of <140/ 90 mmHg. Notably, ACCORD BP and SPRINT measured blood pressure using automated office blood pressure measurement, which yields values that are generally lower than typical office blood pressure readings by approximately 5–10 mmHg (30), suggesting that implementing the ACCORD BP or SPRINT protocols in an outpatient clinic might require a systolic blood pressure target higher than <120 mmHg, such as <130 mmHg.

A number of post hoc analyses have attempted to explain the apparently divergent results of ACCORD BP and SPRINT. Some investigators have argued that the divergent results are not due to differences between people with and without diabetes but rather are due to differences in study design or to characteristics other than diabetes (31–33). Others have opined that the divergent results are most readily explained by the lack of benefit of intensive blood pressure control on cardiovascular mortality in ACCORD BP, which may be due to differential mechanisms underlying cardiovascular disease in type 2 diabetes, to chance, or both (34).

Meta-analyses of Trials

To clarify optimal blood pressure targets in patients with diabetes, meta-analyses have stratified clinical trials by mean baseline blood pressure or mean blood pressure attained in the intervention (or intensive treatment) arm. Based on these

Table 10.1—Randomized controlled trials of intensive versus standard hypertension treatment strategies

Clinical trial	Population	Intensive	Standard	Outcomes
ACCORD BP (28)	4,733 participants with T2D aged 40–79 years with prior evidence of CVD or multiple cardiovascular risk factors	SBP target: <120 mmHg Achieved (mean) SBP/DBP: 119.3/64.4 mmHg	SBP target: 130–140 mmHg Achieved (mean) SBP/DBP: 135.5/70.5 mmHg	<ul style="list-style-type: none"> • No benefit in primary end point: composite of nonfatal MI, nonfatal stroke, and CVD death • Stroke risk reduced 41% with intensive control, not sustained through follow-up beyond the period of active treatment • Adverse events more common in intensive group, particularly elevated serum creatinine and electrolyte abnormalities
ADVANCE BP (29)	11,140 participants with T2D aged 55 years and older with prior evidence of CVD or multiple cardiovascular risk factors	Intervention: a single-pill, fixed-dose combination of perindopril and indapamide Achieved (mean) SBP/DBP: 136/73 mmHg	Control: placebo Achieved (mean) SBP/DBP: 141.6/75.2 mmHg	<ul style="list-style-type: none"> • Intervention reduced risk of primary composite end point of major macrovascular and microvascular events (9%), death from any cause (14%), and death from CVD (18%) • 6-year observational follow-up found reduction in risk of death in intervention group attenuated but still significant (174)
HOT (185)	18,790 participants, including 1,501 with diabetes	DBP target: ≤80 mmHg	DBP target: ≤90 mmHg	<ul style="list-style-type: none"> • In the overall trial, there was no cardiovascular benefit with more intensive targets • In the subpopulation with diabetes, an intensive DBP target was associated with a significantly reduced risk (51%) of CVD events
SPRINT (39)	9,361 participants without diabetes	SBP target: <120 mmHg Achieved (mean): 121.4 mmHg	SBP target: <140 mmHg Achieved (mean): 136.2 mmHg	<ul style="list-style-type: none"> • Intensive SBP target lowered risk of the primary composite outcome 25% (MI, ACS, stroke, heart failure, and death due to CVD) • Intensive target reduced risk of death 27% • Intensive therapy increased risks of electrolyte abnormalities and AKI

ACCORD BP, Action to Control Cardiovascular Risk in Diabetes Blood Pressure trial; ACS, acute coronary syndrome; ADVANCE BP, Action in Diabetes and Vascular Disease: Preterax and Diamicon MR Controlled Evaluation–Blood Pressure trial; AKI, acute kidney injury; CVD, cardiovascular disease; DBP, diastolic blood pressure; HOT, Hypertension Optimal Treatment trial; MI, myocardial infarction; SBP, systolic blood pressure; SPRINT, Systolic Blood Pressure Intervention Trial; T2D, type 2 diabetes. Data from this table can also be found in the ADA position statement “Diabetes and Hypertension” (17).

analyses, antihypertensive treatment appears to be beneficial when mean baseline blood pressure is $\geq 140/90$ mmHg or mean attained intensive blood pressure is $\geq 130/80$ mmHg (17,21,22,24–26). Among trials with lower baseline or attained blood pressure, antihypertensive treatment reduced the risk of stroke, retinopathy, and albuminuria, but effects on other ASCVD outcomes and heart failure were not evident. Taken together, these meta-analyses consistently show that treating patients with baseline blood pressure ≥ 140 mmHg to targets <140 mmHg is beneficial, while more-intensive targets may offer additional (though probably less robust) benefits.

Individualization of Treatment Targets

Patients and clinicians should engage in a shared decision-making process to determine individual blood pressure targets (17). This approach acknowledges that the benefits and risks of intensive blood pressure targets are uncertain and may vary across patients and is consistent with a patient-focused approach to care that values patient priorities and provider judgment (35). Secondary analyses of ACCORD BP and SPRINT suggest that clinical factors can help determine individuals more likely to benefit and less likely to be harmed by intensive blood pressure control (36).

Absolute benefit from blood pressure reduction correlated with absolute baseline cardiovascular risk in SPRINT and in earlier clinical trials conducted at higher baseline blood pressure levels (11,37). Extrapolation of these studies suggests that patients with diabetes may also be more likely to benefit from intensive blood pressure control when they have high absolute cardiovascular risk. Therefore, it may be reasonable to target blood pressure $<130/80$ mmHg among patients with diabetes and either clinically diagnosed cardiovascular disease (particularly stroke, which was significantly reduced in ACCORD BP) or 10-year ASCVD risk $\geq 15\%$, if it can be attained safely. This approach is consistent with guidelines from the American College of Cardiology/American Heart Association, which advocate a blood pressure target $<130/80$ mmHg for all patients, with or without diabetes (38).

Potential adverse effects of antihypertensive therapy (e.g., hypotension,

syncope, falls, acute kidney injury, and electrolyte abnormalities) should also be taken into account (28,39–41). Patients with older age, chronic kidney disease, and frailty have been shown to be at higher risk of adverse effects of intensive blood pressure control (41). In addition, patients with orthostatic hypotension, substantial comorbidity, functional limitations, or polypharmacy may be at high risk of adverse effects, and some patients may prefer higher blood pressure targets to enhance quality of life. Patients with low absolute cardiovascular risk (10-year ASCVD risk $<15\%$) or with a history of adverse effects of intensive blood pressure control or at high risk of such adverse effects should have a higher blood pressure target. In such patients, a blood pressure target of $<140/90$ mmHg is recommended, if it can be safely attained.

Pregnancy and Antihypertensive Medications

There are few randomized controlled trials of antihypertensive therapy in pregnant women with diabetes. A 2014 Cochrane systematic review of antihypertensive therapy for mild to moderate chronic hypertension that included 49 trials and over 4,700 women did not find any conclusive evidence for or against blood pressure treatment to reduce the risk of preeclampsia for the mother or effects on perinatal outcomes such as preterm birth, small-for-gestational-age infants, or fetal death (42). The more recent Control of Hypertension in Pregnancy Study (CHIPS) (43) enrolled mostly women with chronic hypertension. In CHIPS, targeting a diastolic blood pressure of 85 mmHg during pregnancy was associated with reduced likelihood of developing accelerated maternal hypertension and no demonstrable adverse outcome for infants compared with targeting a higher diastolic blood pressure. The mean systolic blood pressure achieved in the more intensively treated group was 133.1 ± 0.5 mmHg, and the mean diastolic blood pressure achieved in that group was 85.3 ± 0.3 mmHg. Therefore, current evidence supports controlling blood pressure to these levels, with a target of $\leq 135/85$ mmHg. A similar approach is supported by the International Society for the Study of Hypertension in Pregnancy, which specifically

recommends use of antihypertensive therapy to maintain systolic blood pressure between 110 and 140 mmHg and diastolic blood pressure between 80 and 85 mmHg (44).

During pregnancy, treatment with ACE inhibitors, angiotensin receptor blockers (ARBs), and spironolactone are contraindicated as they may cause fetal damage. Antihypertensive drugs known to be effective and safe in pregnancy include methyldopa, labetalol, and long-acting nifedipine, while hydralazine may be considered in the acute management of hypertension in pregnancy or severe preeclampsia (45). Diuretics are not recommended for blood pressure control in pregnancy but may be used during late-stage pregnancy if needed for volume control (45,46). The American College of Obstetricians and Gynecologists also recommends that postpartum patients with gestational hypertension, preeclampsia, and superimposed preeclampsia have their blood pressures observed for 72 h in the hospital and for 7–10 days postpartum. Long-term follow-up is recommended for these women as they have increased lifetime cardiovascular risk (47). See Section 14 “Management of Diabetes in Pregnancy” (<https://doi.org/10.2337/dc20-S014>) for additional information.

Treatment Strategies

Lifestyle Intervention

Recommendation

10.7 For patients with blood pressure $>120/80$ mmHg, lifestyle intervention consists of weight loss if overweight or obese, a Dietary Approaches to Stop Hypertension (DASH)-style eating pattern including reducing sodium and increasing potassium intake, moderation of alcohol intake, and increased physical activity. **A**

Lifestyle management is an important component of hypertension treatment because it lowers blood pressure, enhances the effectiveness of some antihypertensive medications, promotes other aspects of metabolic and vascular health, and generally leads to few adverse effects. Lifestyle therapy consists of reducing excess body weight through caloric restriction, restricting sodium intake ($<2,300$ mg/day), increasing consumption of fruits

and vegetables (8–10 servings per day) and low-fat dairy products (2–3 servings per day), avoiding excessive alcohol consumption (no more than 2 servings per day in men and no more than 1 serving per day in women) (48), and increasing activity levels (49).

These lifestyle interventions are reasonable for individuals with diabetes and mildly elevated blood pressure (systolic >120 mmHg or diastolic >80 mmHg) and should be initiated along with pharmacologic therapy when hypertension is diagnosed (**Fig. 10.1**) (49). A lifestyle therapy plan should be developed in collaboration with the patient and discussed as part of diabetes management.

Pharmacologic Interventions

Recommendations

- 10.8** Patients with confirmed office-based blood pressure $\geq 140/90$ mmHg should, in addition to lifestyle therapy, have prompt initiation and timely titration of pharmacologic therapy to achieve blood pressure goals. **A**
- 10.9** Patients with confirmed office-based blood pressure $\geq 160/100$ mmHg should, in addition to lifestyle therapy, have prompt initiation and timely titration of two drugs or a single-pill combination of drugs demonstrated to reduce cardiovascular events in patients with diabetes. **A**
- 10.10** Treatment for hypertension should include drug classes demonstrated to reduce cardiovascular events in patients with diabetes (ACE inhibitors, angiotensin receptor blockers, thiazide-like diuretics, or dihydropyridine calcium channel blockers). **A**
- 10.11** Multiple-drug therapy is generally required to achieve blood pressure targets. However, combinations of ACE inhibitors and angiotensin receptor blockers and combinations of ACE inhibitors or angiotensin receptor blockers with direct renin inhibitors should not be used. **A**
- 10.12** An ACE inhibitor or angiotensin receptor blocker, at the maximum tolerated dose indicated for blood pressure treatment, is the recommended first-line treatment for hypertension in

patients with diabetes and urinary albumin-to-creatinine ratio ≥ 300 mg/g creatinine. **A** or 30–299 mg/g creatinine. **B** If one class is not tolerated, the other should be substituted. **B**

- 10.13** For patients treated with an ACE inhibitor, angiotensin receptor blocker, or diuretic, serum creatinine/estimated glomerular filtration rate and serum potassium levels should be monitored at least annually. **B**

Initial Number of Antihypertensive Medications.

Initial treatment for people with diabetes depends on the severity of hypertension (**Fig. 10.1**). Those with blood pressure between 140/90 mmHg and 159/99 mmHg may begin with a single drug. For patients with blood pressure $\geq 160/100$ mmHg, initial pharmacologic treatment with two antihypertensive medications is recommended in order to more effectively achieve adequate blood pressure control (50–52). Single-pill antihypertensive combinations may improve medication adherence in some patients (53).

Classes of Antihypertensive Medications.

Initial treatment for hypertension should include any of the drug classes demonstrated to reduce cardiovascular events in patients with diabetes: ACE inhibitors (54,55), ARBs (54,55), thiazide-like diuretics (56), or dihydropyridine calcium channel blockers (57). For patients with albuminuria (urine albumin-to-creatinine ratio [UACR] ≥ 30 mg/g), initial treatment should include an ACE inhibitor or ARB in order to reduce the risk of progressive kidney disease (17) (**Fig. 10.1**). In the absence of albuminuria, risk of progressive kidney disease is low, and ACE inhibitors and ARBs have not been found to afford superior cardioprotection when compared with thiazide-like diuretics or dihydropyridine calcium channel blockers (58). β -Blockers may be used for the treatment of prior MI, active angina, or heart failure but have not been shown to reduce mortality as blood pressure–lowering agents in the absence of these conditions (23,59).

Multiple-Drug Therapy. Multiple-drug therapy is often required to achieve blood pressure targets (**Fig. 10.1**), particularly in the setting of diabetic kidney disease. However, the use of both ACE inhibitors and ARBs in combination, or

the combination of an ACE inhibitor or ARB and a direct renin inhibitor, is not recommended given the lack of added ASCVD benefit and increased rate of adverse events—namely, hyperkalemia, syncope, and acute kidney injury (AKI) (60–62). Titration of and/or addition of further blood pressure medications should be made in a timely fashion to overcome clinical inertia in achieving blood pressure targets.

Bedtime Dosing. Growing evidence suggests that there is an association between the absence of nocturnal blood pressure dipping and the incidence of ASCVD. A meta-analysis of randomized clinical trials found a small benefit of evening versus morning dosing of antihypertensive medications with regard to blood pressure control but had no data on clinical effects (63). In two subgroup analyses of a single subsequent randomized controlled trial, moving at least one antihypertensive medication to bedtime significantly reduced cardiovascular events, but results were based on a small number of events (64).

Hyperkalemia and Acute Kidney Injury. Treatment with ACE inhibitors or ARBs can cause AKI and hyperkalemia, while diuretics can cause AKI and either hypokalemia or hyperkalemia (depending on mechanism of action) (65,66). Detection and management of these abnormalities is important because AKI and hyperkalemia each increase the risks of cardiovascular events and death (67). Therefore, serum creatinine and potassium should be monitored during treatment with an ACE inhibitor, ARB, or diuretic, particularly among patients with reduced glomerular filtration who are at increased risk of hyperkalemia and AKI (65,66,68).

Resistant Hypertension

Recommendation

- 10.14** Patients with hypertension who are not meeting blood pressure targets on three classes of antihypertensive medications (including a diuretic) should be considered for mineralocorticoid receptor antagonist therapy. **B**

Resistant hypertension is defined as blood pressure $\geq 140/90$ mmHg despite a therapeutic strategy that includes appropriate lifestyle management plus a diuretic and two other antihypertensive

Recommendations for the Treatment of Confirmed Hypertension in People With Diabetes

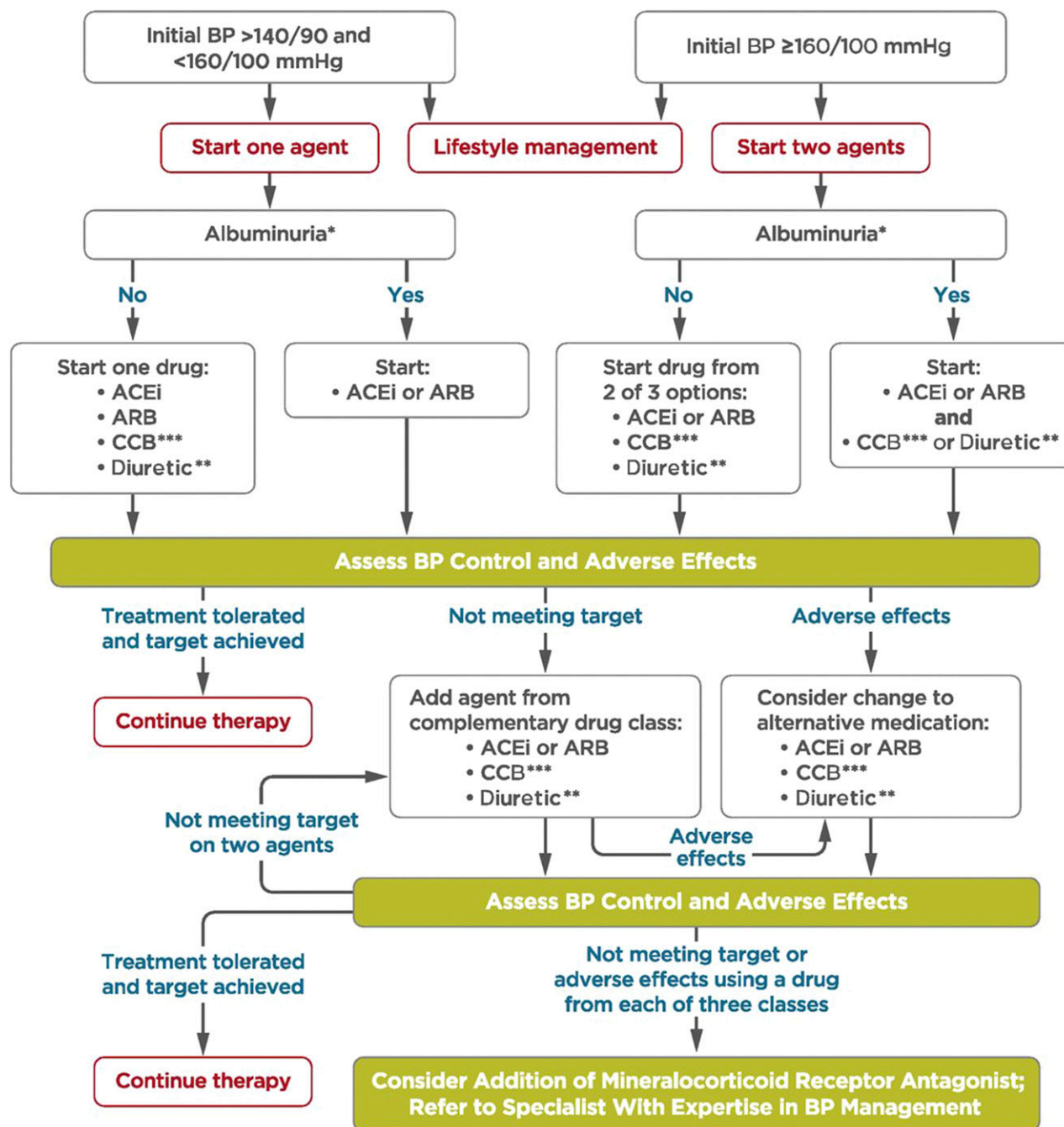


Figure 10.1—Recommendations for the treatment of confirmed hypertension in people with diabetes. *An ACE inhibitor (ACEi) or angiotensin receptor blocker (ARB) is suggested to treat hypertension for patients with urine albumin-to-creatinine ratio 30–299 mg/g creatinine and strongly recommended for patients with urine albumin-to-creatinine ratio \geq 300 mg/g creatinine. **Thiazide-like diuretic; long-acting agents shown to reduce cardiovascular events, such as chlorthalidone and indapamide, are preferred. ***Dihydropyridine calcium channel blocker (CCB). BP, blood pressure. Adapted from de Boer et al. (17).

drugs belonging to different classes at adequate doses. Prior to diagnosing resistant hypertension, a number of other conditions should be excluded, including

medication nonadherence, white coat hypertension, and secondary hypertension. In general, barriers to medication adherence (such as cost and side effects)

should be identified and addressed (Fig. 10.1). Mineralocorticoid receptor antagonists are effective for management of resistant hypertension in patients with

type 2 diabetes when added to existing treatment with an ACE inhibitor or ARB, thiazide-like diuretic, and dihydropyridine calcium channel blocker (69). Mineralocorticoid receptor antagonists also reduce albuminuria and have additional cardiovascular benefits (70–73). However, adding a mineralocorticoid receptor antagonist to a regimen including an ACE inhibitor or ARB may increase the risk for hyperkalemia, emphasizing the importance of regular monitoring for serum creatinine and potassium in these patients, and long-term outcome studies are needed to better evaluate the role of mineralocorticoid receptor antagonists in blood pressure management.

LIPID MANAGEMENT

Lifestyle Intervention

Recommendations

10.15 Lifestyle modification focusing on weight loss (if indicated); application of a Mediterranean style or Dietary Approaches to Stop Hypertension (DASH) eating pattern; reduction of saturated fat and *trans* fat; increase of dietary n-3 fatty acids, viscous fiber, and plant stanols/sterols intake; and increased physical activity should be recommended to improve the lipid profile and reduce the risk of developing atherosclerotic cardiovascular disease in patients with diabetes. **A**

10.16 Intensify lifestyle therapy and optimize glycemic control for patients with elevated triglyceride levels (≥ 150 mg/dL [1.7 mmol/L]) and/or low HDL cholesterol (< 40 mg/dL [1.0 mmol/L] for men, < 50 mg/dL [1.3 mmol/L] for women). **C**

Lifestyle intervention, including weight loss (74), increased physical activity, and medical nutrition therapy, allows some patients to reduce ASCVD risk factors. Nutrition intervention should be tailored according to each patient's age, diabetes type, pharmacologic treatment, lipid levels, and medical conditions.

Recommendations should focus on application of a Mediterranean style diet (75) or Dietary Approaches to Stop Hypertension (DASH) eating pattern, reducing saturated and *trans* fat intake and

increasing plant stanols/sterols, n-3 fatty acids, and viscous fiber (such as in oats, legumes, and citrus) intake (76). Glycemic control may also beneficially modify plasma lipid levels, particularly in patients with very high triglycerides and poor glycemic control. See Section 5 "Facilitating Behavior Change and Well-being to Improve Health Outcomes" (<https://doi.org/10.2337/dc20-S010>) for additional nutrition information.

Ongoing Therapy and Monitoring With Lipid Panel

Recommendations

10.17 In adults not taking statins or other lipid-lowering therapy, it is reasonable to obtain a lipid profile at the time of diabetes diagnosis, at an initial medical evaluation, and every 5 years thereafter if under the age of 40 years, or more frequently if indicated. **E**

10.18 Obtain a lipid profile at initiation of statins or other lipid-lowering therapy, 4–12 weeks after initiation or a change in dose, and annually thereafter as it may help to monitor the response to therapy and inform medication adherence. **E**

In adults with diabetes, it is reasonable to obtain a lipid profile (total cholesterol, LDL cholesterol, HDL cholesterol, and triglycerides) at the time of diagnosis, at the initial medical evaluation, and at least every 5 years thereafter in patients under the age of 40 years. In younger patients with longer duration of disease (such as those with youth-onset type 1 diabetes), more frequent lipid profiles may be reasonable. A lipid panel should also be obtained immediately before initiating statin therapy. Once a patient is taking a statin, LDL cholesterol levels should be assessed 4–12 weeks after initiation of statin therapy, after any change in dose, and on an individual basis (e.g., to monitor for medication adherence and efficacy). If LDL cholesterol levels are not responding in spite of medication adherence, clinical judgment is recommended to determine the need for and timing of lipid panels. In individual patients, the highly variable LDL cholesterol-lowering response seen with statins is poorly understood (77). Clinicians should attempt to find a dose or alternative statin that is tolerable if side

effects occur. There is evidence for benefit from even extremely low, less than daily statin doses (78).

STATIN TREATMENT

Primary Prevention

Recommendations

10.19 For patients with diabetes aged 40–75 years without atherosclerotic cardiovascular disease, use moderate-intensity statin therapy in addition to lifestyle therapy. **A**

10.20 For patients with diabetes aged 20–39 years with additional atherosclerotic cardiovascular disease risk factors, it may be reasonable to initiate statin therapy in addition to lifestyle therapy. **C**

10.21 In patients with diabetes at higher risk, especially those with multiple atherosclerotic cardiovascular disease risk factors or aged 50–70 years, it is reasonable to use high-intensity statin therapy. **B**

10.22 In adults with diabetes and 10-year atherosclerotic cardiovascular disease risk of 20% or higher, it may be reasonable to add ezetimibe to maximally tolerated statin therapy to reduce LDL cholesterol levels by 50% or more. **C**

Secondary Prevention

Recommendations

10.23 For patients of all ages with diabetes and atherosclerotic cardiovascular disease, high-intensity statin therapy should be added to lifestyle therapy. **A**

10.24 For patients with diabetes and atherosclerotic cardiovascular disease considered very high risk using specific criteria, if LDL cholesterol is ≥ 70 mg/dL on maximally tolerated statin dose, consider adding additional LDL-lowering therapy (such as ezetimibe or PCSK9 inhibitor). **A** Ezetimibe may be preferred due to lower cost.

10.25 For patients who do not tolerate the intended intensity, the maximally tolerated statin dose should be used. **E**

- 10.26** In adults with diabetes aged >75 years already on statin therapy, it is reasonable to continue statin treatment. **B**
- 10.27** In adults with diabetes aged >75 years, it may be reasonable to initiate statin therapy after discussion of potential benefits and risks. **C**
- 10.28** Statin therapy is contraindicated in pregnancy. **B**

Initiating Statin Therapy Based on Risk

Patients with type 2 diabetes have an increased prevalence of lipid abnormalities, contributing to their high risk of ASCVD. Multiple clinical trials have demonstrated the beneficial effects of statin therapy on ASCVD outcomes in subjects with and without CHD (79,80). Subgroup analyses of patients with diabetes in larger trials (81–85) and trials in patients with diabetes (86,87) showed significant primary and secondary prevention of ASCVD events and CHD death in patients with diabetes. Meta-analyses, including data from over 18,000 patients with diabetes from 14 randomized trials of statin therapy (mean follow-up 4.3 years), demonstrate a 9% proportional reduction in all-cause mortality and 13% reduction in vascular mortality for each mmol/L (39 mg/dL) reduction in LDL cholesterol (88).

Accordingly, statins are the drugs of choice for LDL cholesterol lowering and cardioprotection. **Table 10.2** shows the two statin dosing intensities that are recommended for use in clinical practice: high-intensity statin therapy will achieve approximately a ≥50% reduction in LDL cholesterol, and moderate-intensity statin regimens achieve 30–49% reductions in LDL cholesterol. Low-dose statin therapy is generally not recommended in patients with diabetes but is sometimes

the only dose of statin that a patient can tolerate. For patients who do not tolerate the intended intensity of statin, the maximally tolerated statin dose should be used.

As in those without diabetes, absolute reductions in ASCVD outcomes (CHD death and nonfatal MI) are greatest in people with high baseline ASCVD risk (known ASCVD and/or very high LDL cholesterol levels), but the overall benefits of statin therapy in people with diabetes at moderate or even low risk for ASCVD are convincing (89,90). The *relative* benefit of lipid-lowering therapy has been uniform across most subgroups tested (80,88), including subgroups that varied with respect to age and other risk factors.

Primary Prevention (Patients Without ASCVD)

For primary prevention, moderate-dose statin therapy is recommended for those 40 years and older (82,89,90), though high-intensity therapy may be considered on an individual basis in the context of additional ASCVD risk factors. The evidence is strong for patients with diabetes aged 40–75 years, an age-group well represented in statin trials showing benefit. Since risk is enhanced in patients with diabetes, as noted above, patients who also have multiple other coronary risk factors have increased risk, equivalent to that of those with ASCVD. As such, recent guidelines recommend that in patients with diabetes who are at higher risk, especially those with multiple ASCVD risk factors or aged 50–70 years, it is reasonable to prescribe high-intensity statin therapy (12,91). Furthermore, for patients with diabetes whose ASCVD risk is ≥20%, i.e., an ASCVD risk equivalent, the same high-intensity statin therapy is recommended as for those with documented ASCVD (12). In those individuals,

it may also be reasonable to add ezetimibe to maximally tolerated statin therapy if needed to reduce LDL cholesterol levels by 50% or more (12). The evidence is lower for patients aged >75 years; relatively few older patients with diabetes have been enrolled in primary prevention trials. However, heterogeneity by age has not been seen in the relative benefit of lipid-lowering therapy in trials that included older participants (80,87,88), and because older age confers higher risk, the absolute benefits are actually greater (80,92). Moderate-intensity statin therapy is recommended in patients with diabetes who are 75 years or older. However, the risk-benefit profile should be routinely evaluated in this population, with downward titration of dose performed as needed. See Section 12 “Older Adults” (<https://doi.org/10.2337/dc20-S012>) for more details on clinical considerations for this population.

Age <40 Years and/or Type 1 Diabetes. Very little clinical trial evidence exists for patients with type 2 diabetes under the age of 40 years or for patients with type 1 diabetes of any age. For pediatric recommendations, see Section 13 “Children and Adolescents” (<https://doi.org/10.2337/dc20-S013>). In the Heart Protection Study (lower age limit 40 years), the subgroup of ~600 patients with type 1 diabetes had a proportionately similar, although not statistically significant, reduction in risk as patients with type 2 diabetes (82). Even though the data are not definitive, similar statin treatment approaches should be considered for patients with type 1 or type 2 diabetes, particularly in the presence of other cardiovascular risk factors. Patients below the age of 40 have lower risk of developing a cardiovascular event over a 10-year horizon; however, their lifetime risk of developing cardiovascular disease and suffering an MI, stroke, or cardiovascular death is high. For patients who are younger than 40 years of age and/or have type 1 diabetes with other ASCVD risk factors, it is recommended that the patient and health care provider discuss the relative benefits and risks and consider the use of moderate-intensity statin therapy. Please refer to “Type 1 Diabetes Mellitus and Cardiovascular Disease: A Scientific Statement From the American Heart Association and

Table 10.2—High-intensity and moderate-intensity statin therapy*

High-intensity statin therapy (lowers LDL cholesterol by ≥50%)	Moderate-intensity statin therapy (lowers LDL cholesterol by 30–49%)
Atorvastatin 40–80 mg	Atorvastatin 10–20 mg
Rosuvastatin 20–40 mg	Rosuvastatin 5–10 mg
	Simvastatin 20–40 mg
	Pravastatin 40–80 mg
	Lovastatin 40 mg
	Fluvastatin XL 80 mg
	Pitavastatin 1–4 mg

*Once-daily dosing. XL, extended release.

American Diabetes Association” (93) for additional discussion.

Secondary Prevention (Patients With ASCVD)

Because risk is high in patients with ASCVD, intensive therapy is indicated and has been shown to be of benefit in multiple large randomized cardiovascular outcomes trials (88,92,94,95). High-intensity statin therapy is recommended for all patients with diabetes and ASCVD. This recommendation is based on the Cholesterol Treatment Trialists’ Collaboration involving 26 statin trials, of which 5 compared high-intensity versus moderate-intensity statins. Together, they found reductions in nonfatal cardiovascular events with more intensive therapy, in patients with and without diabetes (80,84,94).

Over the past few years, there have been multiple large randomized trials investigating the benefits of adding nonstatin agents to statin therapy, including those that evaluated further lowering of LDL cholesterol with ezetimibe (92,96) and proprotein convertase subtilisin/kexin type 9 (PCSK9) inhibitors (95). Each trial found a significant benefit in the reduction of ASCVD events that was directly related to the degree of further LDL cholesterol lowering. These large trials included a significant number of participants with diabetes. For very high-risk patients with ASCVD who are on high-intensity (and maximally tolerated) statin therapy and have an LDL cholesterol ≥ 70 mg/dL, the addition of nonstatin LDL-lowering therapy can be considered following a clinician-patient discussion about the net benefit, safety, and cost. Definition of very high-risk patients with ASCVD includes the use of specific criteria (major ASCVD events and high-risk conditions); refer to the 2018 American College of Cardiology/American Heart Association multisociety guideline on the management of blood cholesterol for further details regarding this definition of risk (12).

Please see 2018 AHA/ACC/AACVPR/AAPA/ABC/ACPM/ADA/AGS/APHA/ASPC/NLA/PCNA Guideline on the Management of Blood Cholesterol: Executive Summary: A Report of the American College of Cardiology/American Heart Association Task Force on Clinical Practice

Guidelines (12) for recommendations for primary and secondary prevention and for statin and combination treatment in adults with diabetes (97).

Combination Therapy for LDL Cholesterol Lowering

Statins and Ezetimibe

The IMPROVED Reduction of Outcomes: Vytorin Efficacy International Trial (IMPROVE-IT) was a randomized controlled trial in 18,144 patients comparing the addition of ezetimibe to simvastatin therapy versus simvastatin alone. Individuals were ≥ 50 years of age, had experienced a recent acute coronary syndrome (ACS), and were treated for an average of 6 years. Overall, the addition of ezetimibe led to a 6.4% relative benefit and a 2% absolute reduction in major adverse cardiovascular events, with the degree of benefit being directly proportional to the change in LDL cholesterol, which was 70 mg/dL in the statin group on average and 54 mg/dL in the combination group (92). In those with diabetes (27% of participants), the combination of moderate-intensity simvastatin (40 mg) and ezetimibe (10 mg) showed a significant reduction of major adverse cardiovascular events with an absolute risk reduction of 5% (40% vs. 45% cumulative incidence at 7 years) and a relative risk reduction of 14% (hazard ratio [HR] 0.86 [95% CI 0.78–0.94]) over moderate-intensity simvastatin (40 mg) alone (96).

Statins and PCSK9 Inhibitors

Placebo-controlled trials evaluating the addition of the PCSK9 inhibitors evolocumab and alirocumab to maximally tolerated doses of statin therapy in participants who were at high risk for ASCVD demonstrated an average reduction in LDL cholesterol ranging from 36% to 59%. These agents have been approved as adjunctive therapy for patients with ASCVD or familial hypercholesterolemia who are receiving maximally tolerated statin therapy but require additional lowering of LDL cholesterol (98,99).

The effects of PCSK9 inhibition on ASCVD outcomes was investigated in the Further Cardiovascular Outcomes Research With PCSK9 Inhibition in Subjects With Elevated Risk (FOURIER) trial, which enrolled 27,564 patients with prior ASCVD and an additional high-risk

feature who were receiving their maximally tolerated statin therapy (two-thirds were on high-intensity statin) but who still had LDL cholesterol ≥ 70 mg/dL or non-HDL cholesterol ≥ 100 mg/dL (95). Patients were randomized to receive subcutaneous injections of evolocumab (either 140 mg every 2 weeks or 420 mg every month based on patient preference) versus placebo. Evolocumab reduced LDL cholesterol by 59% from a median of 92 to 30 mg/dL in the treatment arm.

During the median follow-up of 2.2 years, the composite outcome of cardiovascular death, MI, stroke, hospitalization for angina, or revascularization occurred in 11.3% vs. 9.8% of the placebo and evolocumab groups, respectively, representing a 15% relative risk reduction ($P < 0.001$). The combined end point of cardiovascular death, MI, or stroke was reduced by 20%, from 7.4% to 5.9% ($P < 0.001$). Importantly, similar benefits were seen in a prespecified subgroup of patients with diabetes, comprising 11,031 patients (40% of the trial) (100).

Treatment of Other Lipoprotein Fractions or Targets

Recommendations

- 10.29** For patients with fasting triglyceride levels ≥ 500 mg/dL, evaluate for secondary causes of hypertriglyceridemia and consider medical therapy to reduce the risk of pancreatitis. **C**
- 10.30** In adults with moderate hypertriglyceridemia (fasting or nonfasting triglycerides 175–499 mg/dL), clinicians should address and treat lifestyle factors (obesity and metabolic syndrome), secondary factors (diabetes, chronic liver or kidney disease and/or nephrotic syndrome, hypothyroidism), and medications that raise triglycerides. **C**
- 10.31** In patients with atherosclerotic cardiovascular disease or other cardiovascular risk factors on a statin with controlled LDL cholesterol but elevated triglycerides (135–499 mg/dL), the addition of icosapent ethyl can be considered to reduce cardiovascular risk. **A**

Hypertriglyceridemia should be addressed with dietary and lifestyle changes including weight loss and abstinence from alcohol (101). Severe hypertriglyceridemia (fasting triglycerides ≥ 500 mg/dL and especially $> 1,000$ mg/dL) may warrant pharmacologic therapy (fibric acid derivatives and/or fish oil) to reduce the risk of acute pancreatitis. Moderate- or high-intensity statin therapy should also be used as indicated to reduce risk of cardiovascular events (see *STATIN TREATMENT*). In patients with moderate hypertriglyceridemia, lifestyle interventions, treatment of secondary factors, and avoidance of medications that might raise triglycerides are recommended.

The Reduction of Cardiovascular Events with Icosapent Ethyl—Intervention Trial (REDUCE-IT) enrolled 8,179 adults receiving statin therapy with moderately elevated triglycerides (135–499 mg/dL, median baseline of 216 mg/dL) who had either established cardiovascular disease (secondary prevention cohort) or diabetes plus at least one other cardiovascular risk factor (primary prevention cohort). Patients were randomized to icosapent ethyl 4 g/day (2 g twice daily with food) versus placebo. The trial met its primary end point, demonstrating a 25% relative risk reduction ($P < 0.001$) for the primary end point composite of cardiovascular death, nonfatal myocardial infarction, nonfatal stroke, coronary revascularization, or unstable angina. The composite of cardiovascular death, nonfatal myocardial infarction, or nonfatal stroke was reduced by 26% ($P < 0.001$). Additional ischemic end points were significantly lower in the icosapent ethyl group than in the placebo group, including cardiovascular death, which was reduced by 20% ($P = 0.03$). The proportions of patients experiencing adverse events and serious adverse events were similar between the active and placebo treatment groups. It should be noted that data are lacking with other n-3 fatty acids, and results of the REDUCE-IT trial should not be extrapolated to other products (102).

Low levels of HDL cholesterol, often associated with elevated triglyceride levels, are the most prevalent pattern of dyslipidemia in individuals with type 2 diabetes. However, the evidence for the use of drugs that target these lipid fractions is substantially less robust than

that for statin therapy (103). In a large trial in patients with diabetes, fenofibrate failed to reduce overall cardiovascular outcomes (104).

Other Combination Therapy

Recommendations

10.32 Statin plus fibrate combination therapy has not been shown to improve atherosclerotic cardiovascular disease outcomes and is generally not recommended. **A**

10.33 Statin plus niacin combination therapy has not been shown to provide additional cardiovascular benefit above statin therapy alone, may increase the risk of stroke with additional side effects, and is generally not recommended. **A**

Statin and Fibrate Combination Therapy

Combination therapy (statin and fibrate) is associated with an increased risk for abnormal transaminase levels, myositis, and rhabdomyolysis. The risk of rhabdomyolysis is more common with higher doses of statins and renal insufficiency and appears to be higher when statins are combined with gemfibrozil (compared with fenofibrate) (105).

In the ACCORD study, in patients with type 2 diabetes who were at high risk for ASCVD, the combination of fenofibrate and simvastatin did not reduce the rate of fatal cardiovascular events, nonfatal MI, or nonfatal stroke as compared with simvastatin alone. Prespecified subgroup analyses suggested heterogeneity in treatment effects with possible benefit for men with both a triglyceride level ≥ 204 mg/dL (2.3 mmol/L) and an HDL cholesterol level ≤ 34 mg/dL (0.9 mmol/L) (106). A prospective trial of a newer fibrate in this specific population of patients is ongoing (107).

Statin and Niacin Combination Therapy

The Atherothrombosis Intervention in Metabolic Syndrome With Low HDL/High Triglycerides: Impact on Global Health Outcomes (AIM-HIGH) trial randomized over 3,000 patients (about one-third with diabetes) with established ASCVD, low LDL cholesterol levels (< 180 mg/dL [4.7 mmol/L]), low HDL cholesterol levels (men < 40 mg/dL [1.0 mmol/L] and women < 50 mg/dL

[1.3 mmol/L]), and triglyceride levels of 150–400 mg/dL (1.7–4.5 mmol/L) to statin therapy plus extended-release niacin or placebo. The trial was halted early due to lack of efficacy on the primary ASCVD outcome (first event of the composite of death from CHD, nonfatal MI, ischemic stroke, hospitalization for an ACS, or symptom-driven coronary or cerebral revascularization) and a possible increase in ischemic stroke in those on combination therapy (108).

The much larger Heart Protection Study 2—Treatment of HDL to Reduce the Incidence of Vascular Events (HPS2-THRIVE) trial also failed to show a benefit of adding niacin to background statin therapy (109). A total of 25,673 patients with prior vascular disease were randomized to receive 2 g of extended-release niacin and 40 mg of laropiprant (an antagonist of the prostaglandin D2 receptor DP₁ that has been shown to improve adherence to niacin therapy) versus a matching placebo daily and followed for a median follow-up period of 3.9 years. There was no significant difference in the rate of coronary death, MI, stroke, or coronary revascularization with the addition of niacin—laropiprant versus placebo (13.2% vs. 13.7%; rate ratio 0.96; $P = 0.29$). Niacin—laropiprant was associated with an increased incidence of new-onset diabetes (absolute excess, 1.3 percentage points; $P < 0.001$) and disturbances in diabetes control among those with diabetes. In addition, there was an increase in serious adverse events associated with the gastrointestinal system, musculoskeletal system, skin, and, unexpectedly, infection and bleeding.

Therefore, combination therapy with a statin and niacin is not recommended given the lack of efficacy on major ASCVD outcomes and increased side effects.

Diabetes Risk With Statin Use

Several studies have reported a modestly increased risk of incident diabetes with statin use (110,111), which may be limited to those with diabetes risk factors. An analysis of one of the initial studies suggested that although statin use was associated with diabetes risk, the cardiovascular event rate reduction with statins far outweighed the risk of incident diabetes even for patients at highest risk for diabetes (112). The absolute

risk increase was small (over 5 years of follow-up, 1.2% of participants on placebo developed diabetes and 1.5% on rosuvastatin developed diabetes) (112). A meta-analysis of 13 randomized statin trials with 91,140 participants showed an odds ratio of 1.09 for a new diagnosis of diabetes, so that (on average) treatment of 255 patients with statins for 4 years resulted in one additional case of diabetes while simultaneously preventing 5.4 vascular events among those 255 patients (111).

Lipid-Lowering Agents and Cognitive Function

Although concerns regarding a potential adverse impact of lipid-lowering agents on cognitive function have been raised, several lines of evidence point against this association, as detailed in a 2018 European Atherosclerosis Society Consensus Panel statement (113). First, there are three large randomized trials of statin versus placebo where specific cognitive tests were performed, and no differences were seen between statin and placebo (114–117). In addition, no change in cognitive function has been reported in studies with the addition of ezetimibe (92) or PCSK9 inhibitors (95,118) to statin therapy, including among patients treated to very low LDL cholesterol levels. In addition, the most recent systematic review of the U.S. Food and Drug Administration's (FDA's) post-marketing surveillance databases, randomized controlled trials, and cohort, case-control, and cross-sectional studies evaluating cognition in patients receiving statins found that published data do not reveal an adverse effect of statins on cognition (119). Therefore, a concern that statins or other lipid-lowering agents might cause cognitive dysfunction or dementia is not currently supported by evidence and should not deter their use in individuals with diabetes at high risk for ASCVD (119).

ANTIPLATELET AGENTS

Recommendations

10.34 Use aspirin therapy (75–162 mg/day) as a secondary prevention strategy in those with diabetes and a history of atherosclerotic cardiovascular disease. **A**

10.35 For patients with atherosclerotic cardiovascular disease and documented aspirin allergy,

clopidogrel (75 mg/day) should be used. **B**

10.36 Dual antiplatelet therapy (with low-dose aspirin and a P2Y12 inhibitor) is reasonable for a year after an acute coronary syndrome **A** and may have benefits beyond this period. **B**

10.37 Aspirin therapy (75–162 mg/day) may be considered as a primary prevention strategy in those with diabetes who are at increased cardiovascular risk, after a comprehensive discussion with the patient on the benefits versus the comparable increased risk of bleeding. **A**

Risk Reduction

Aspirin has been shown to be effective in reducing cardiovascular morbidity and mortality in high-risk patients with previous MI or stroke (secondary prevention) and is strongly recommended. In primary prevention, however, among patients with no previous cardiovascular events, its net benefit is more controversial (120,121).

Previous randomized controlled trials of aspirin specifically in patients with diabetes failed to consistently show a significant reduction in overall ASCVD end points, raising questions about the efficacy of aspirin for primary prevention in people with diabetes, although some sex differences were suggested (122–124).

The Antithrombotic Trialists' Collaboration published an individual patient-level meta-analysis (120) of the six large trials of aspirin for primary prevention in the general population. These trials collectively enrolled over 95,000 participants, including almost 4,000 with diabetes. Overall, they found that aspirin reduced the risk of serious vascular events by 12% (relative risk 0.88 [95% CI 0.82–0.94]). The largest reduction was for nonfatal MI, with little effect on CHD death (relative risk 0.95 [95% CI 0.78–1.15]) or total stroke.

Most recently, the ASCEND (A Study of Cardiovascular Events in Diabetes) trial randomized 15,480 patients with diabetes but no evident cardiovascular disease to aspirin 100 mg daily or placebo (125). The primary efficacy end point was vascular death, MI, or stroke or transient ischemic attack. The primary safety

outcome was major bleeding (i.e., intracranial hemorrhage, sight-threatening bleeding in the eye, gastrointestinal bleeding, or other serious bleeding). During a mean follow-up of 7.4 years, there was a significant 12% reduction in the primary efficacy end point (8.5% vs. 9.6%; $P = 0.01$). In contrast, major bleeding was significantly increased from 3.2% to 4.1% in the aspirin group (rate ratio 1.29; $P = 0.003$), with most of the excess being gastrointestinal bleeding and other extracranial bleeding. There were no significant differences by sex, weight, or duration of diabetes or other baseline factors including ASCVD risk score.

Two other large randomized trials of aspirin for primary prevention, in patients without diabetes (ARRIVE [Aspirin to Reduce Risk of Initial Vascular Events]) (126) and in the elderly (ASPREE [Aspirin in Reducing Events in the Elderly]) (127), which included 11% with diabetes, found no benefit of aspirin on the primary efficacy end point and an increased risk of bleeding. In ARRIVE, with 12,546 patients over a period of 60 months follow-up, the primary end point occurred in 4.29% vs. 4.48% of patients in the aspirin versus placebo groups (HR 0.96; 95% CI 0.81–1.13; $P = 0.60$). Gastrointestinal bleeding events (characterized as mild) occurred in 0.97% of patients in the aspirin group vs. 0.46% in the placebo group (HR 2.11; 95% CI 1.36–3.28; $P = 0.0007$). In ASPREE, including 19,114 persons, for the rate of cardiovascular disease (fatal CHD, MI, stroke, or hospitalization for heart failure) after a median of 4.7 years of follow-up, the rates per 1,000 person-years were 10.7 vs. 11.3 events in aspirin vs. placebo groups (HR 0.95; 95% CI 0.83–1.08). The rate of major hemorrhage per 1,000 person-years was 8.6 events vs. 6.2 events, respectively (HR 1.38; 95% CI 1.18–1.62; $P < 0.001$).

Thus, aspirin appears to have a modest effect on ischemic vascular events, with the absolute decrease in events depending on the underlying ASCVD risk. The main adverse effect is an increased risk of gastrointestinal bleeding. The excess risk may be as high as 5 per 1,000 per year in real-world settings. However, for adults with ASCVD risk $>1\%$ per year, the number of ASCVD events prevented will be similar to the number of episodes of bleeding induced, although these complications do not have equal effects on long-term health (128).

Recommendations for using aspirin as primary prevention include both men and women aged ≥ 50 years with diabetes and at least one additional major risk factor (family history of premature ASCVD, hypertension, dyslipidemia, smoking, or chronic kidney disease/albuminuria) who are not at increased risk of bleeding (e.g., older age, anemia, renal disease) (129–132). Noninvasive imaging techniques such as coronary calcium scoring may potentially help further tailor aspirin therapy, particularly in those at low risk (133) (134). For patients over the age of 70 years (with or without diabetes), the balance appears to have greater risk than benefit (125,127). Thus, for primary prevention, the use of aspirin needs to be carefully considered and may generally not be recommended. Aspirin may be considered in the context of high cardiovascular risk with low bleeding risk, but generally not in older adults. Aspirin therapy for primary prevention may be considered in the context of shared decision-making, which carefully weighs the cardiovascular benefits with the fairly comparable increase in risk of bleeding. For patients with documented ASCVD, use of aspirin for secondary prevention has far greater benefit than risk; for this indication, aspirin is still recommended (120).

Aspirin Use in People <50 Years of Age

Aspirin is not recommended for those at low risk of ASCVD (such as men and women aged <50 years with diabetes with no other major ASCVD risk factors) as the low benefit is likely to be outweighed by the risks of bleeding. Clinical judgment should be used for those at intermediate risk (younger patients with one or more risk factors or older patients with no risk factors) until further research is available. Patients' willingness to undergo long-term aspirin therapy should also be considered (135). Aspirin use in patients aged <21 years is generally contraindicated due to the associated risk of Reye syndrome.

Aspirin Dosing

Average daily dosages used in most clinical trials involving patients with diabetes ranged from 50 mg to 650 mg but were mostly in the range of 100–325 mg/day. There is little evidence to support any specific dose, but using the lowest possible dose may help to reduce side effects (136). In the U.S., the most common low-dose tablet is 81 mg. Although

platelets from patients with diabetes have altered function, it is unclear what, if any, effect that finding has on the required dose of aspirin for cardioprotective effects in the patient with diabetes. Many alternate pathways for platelet activation exist that are independent of thromboxane A_2 and thus are not sensitive to the effects of aspirin (137). "Aspirin resistance" has been described in patients with diabetes when measured by a variety of ex vivo and in vitro methods (platelet aggregometry, measurement of thromboxane B_2) (138), but other studies suggest no impairment in aspirin response among patients with diabetes (139). A recent trial suggested that more frequent dosing regimens of aspirin may reduce platelet reactivity in individuals with diabetes (140); however, these observations alone are insufficient to empirically recommend that higher doses of aspirin be used in this group at this time. Another recent meta-analysis raised the hypothesis that low-dose aspirin efficacy is reduced in those weighing more than 70 kg (141); however, the ASCEND trial found benefit of low-dose aspirin in those in this weight range, which would thus not validate this suggested hypothesis (125). It appears that 75–162 mg/day is optimal.

Indications for P2Y₁₂ Receptor Antagonist Use

A P2Y₁₂ receptor antagonist in combination with aspirin is reasonable for at least 1 year in patients following an ACS and may have benefits beyond this period. Evidence supports use of either ticagrelor or clopidogrel if no percutaneous coronary intervention was performed and clopidogrel, ticagrelor, or prasugrel if a percutaneous coronary intervention was performed (142). In patients with diabetes and prior MI (1–3 years before), adding ticagrelor to aspirin significantly reduces the risk of recurrent ischemic events including cardiovascular and CHD death (143).

CARDIOVASCULAR DISEASE

Screening

Recommendations

10.38 In asymptomatic patients, routine screening for coronary artery disease is not recommended as it

does not improve outcomes as long as atherosclerotic cardiovascular disease risk factors are treated. **A**

10.39 Consider investigations for coronary artery disease in the presence of any of the following: atypical cardiac symptoms (e.g., unexplained dyspnea, chest discomfort); signs or symptoms of associated vascular disease including carotid bruits, transient ischemic attack, stroke, claudication, or peripheral arterial disease; or electrocardiogram abnormalities (e.g., Q waves). **E**

Treatment

Recommendations

10.40 In patients with known atherosclerotic cardiovascular disease, consider ACE inhibitor or angiotensin receptor blocker therapy to reduce the risk of cardiovascular events. **B**

10.41 In patients with prior myocardial infarction, β -blockers should be continued for at least 2 years after the event. **B**

10.42 In patients with type 2 diabetes with stable heart failure, metformin may be continued for glucose lowering if estimated glomerular filtration rate remains >30 mL/min but should be avoided in unstable or hospitalized patients with heart failure. **B**

10.43 Among patients with type 2 diabetes who have established atherosclerotic cardiovascular disease or established kidney disease, a sodium–glucose cotransporter 2 inhibitor or glucagon-like peptide 1 receptor agonist with demonstrated cardiovascular disease benefit (**Table 10.3B** and **Table 10.3C**) is recommended as part of the glucose-lowering regimen. **A**

10.43a In patients with type 2 diabetes and established atherosclerotic cardiovascular disease, multiple atherosclerotic cardiovascular disease risk factors, or diabetic kidney disease, a sodium–glucose cotransporter 2 inhibitor with demonstrated

cardiovascular benefit is recommended to reduce the risk of major adverse cardiovascular events and heart failure hospitalization. **A**

10.43b In patients with type 2 diabetes and established atherosclerotic cardiovascular disease or multiple risk factors for atherosclerotic cardiovascular disease, a glucagon-like peptide 1 receptor agonist with demonstrated cardiovascular benefit is recommended to reduce the risk of major adverse cardiovascular events. **A**

10.43c In patients with type 2 diabetes and established heart failure, a sodium–glucose cotransporter 2 inhibitor may be considered to reduce risk of heart failure hospitalization. **C**

CARDIAC TESTING

Candidates for advanced or invasive cardiac testing include those with 1) typical or atypical cardiac symptoms and 2) an abnormal resting electrocardiogram (ECG). Exercise ECG testing without or with echocardiography may be used as the initial test. In adults with diabetes \geq 40 years of age, measurement of coronary artery calcium is also reasonable for cardiovascular risk assessment. Pharmacologic stress echocardiography or nuclear imaging should be considered in individuals with diabetes in whom resting ECG abnormalities preclude exercise stress testing (e.g., left bundle branch block or ST-T abnormalities). In addition, individuals who require stress testing and are unable to exercise should undergo pharmacologic stress echocardiography or nuclear imaging.

SCREENING ASYMPTOMATIC PATIENTS

The screening of asymptomatic patients with high ASCVD risk is not recommended (144), in part because these high-risk patients should already be receiving intensive medical therapy—an approach that provides similar benefit as invasive revascularization (145,146). There is also some evidence that silent ischemia may reverse over time, adding to the controversy concerning aggressive screening strategies (147). In prospective studies, coronary artery calcium has been

established as an independent predictor of future ASCVD events in patients with diabetes and is consistently superior to both the UK Prospective Diabetes Study (UKPDS) risk engine and the Framingham Risk Score in predicting risk in this population (148–150). However, a randomized observational trial demonstrated no clinical benefit to routine screening of asymptomatic patients with type 2 diabetes and normal ECGs (151). Despite abnormal myocardial perfusion imaging in more than one in five patients, cardiac outcomes were essentially equal (and very low) in screened versus unscreened patients. Accordingly, indiscriminate screening is not considered cost-effective. Studies have found that a risk factor–based approach to the initial diagnostic evaluation and subsequent follow-up for coronary artery disease fails to identify which patients with type 2 diabetes will have silent ischemia on screening tests (152,153).

Any benefit of newer noninvasive coronary artery disease screening methods, such as computed tomography calcium scoring and computed tomography angiography, to identify patient subgroups for different treatment strategies remains unproven in asymptomatic patients with diabetes, though research is ongoing. Although asymptomatic patients with diabetes with higher coronary disease burden have more future cardiac events (148,154,155), the role of these tests beyond risk stratification is not clear.

While coronary artery screening methods, such as calcium scoring, may improve cardiovascular risk assessment in people with type 2 diabetes (156), their routine use leads to radiation exposure and may result in unnecessary invasive testing such as coronary angiography and revascularization procedures. The ultimate balance of benefit, cost, and risks of such an approach in asymptomatic patients remains controversial, particularly in the modern setting of aggressive ASCVD risk factor control.

LIFESTYLE AND PHARMACOLOGIC INTERVENTIONS

Intensive lifestyle intervention focusing on weight loss through decreased caloric intake and increased physical activity as performed in the Action for Health in

Diabetes (Look AHEAD) trial may be considered for improving glucose control, fitness, and some ASCVD risk factors (157). Patients at increased ASCVD risk should receive statin, ACE inhibitor, or ARB therapy if the patient has hypertension, and possibly aspirin, unless there are contraindications to a particular drug class. While clear benefit exists for ACE inhibitor or ARB therapy in patients with diabetic kidney disease or hypertension, the benefits in patients with ASCVD in the absence of these conditions are less clear, especially when LDL cholesterol is concomitantly controlled (158,159). In patients with prior MI, active angina, or HFrEF, β -blockers should be used (160).

GLUCOSE-LOWERING THERAPIES AND CARDIOVASCULAR OUTCOMES

In 2008, the FDA issued a guidance for industry to perform cardiovascular outcomes trials for all new medications for the treatment for type 2 diabetes amid concerns of increased cardiovascular risk (161). Previously approved diabetes medications were not subject to the guidance. Recently published cardiovascular outcomes trials have provided additional data on cardiovascular outcomes in patients with type 2 diabetes with cardiovascular disease or at high risk for cardiovascular disease (see **Table 10.3A**, **Table 10.3B**, and **Table 10.3C**). Cardiovascular outcomes trials of dipeptidyl peptidase 4 (DPP-4) inhibitors have all, so far, not shown cardiovascular benefits relative to placebo. However, results from other new agents have provided a mix of results.

SGLT2 Inhibitor Trials

The BI 10773 (Empagliflozin) Cardiovascular Outcome Event Trial in Type 2 Diabetes Mellitus Patients (EMPA-REG OUTCOME) trial was a randomized, double-blind trial that assessed the effect of empagliflozin, an SGLT2 inhibitor, versus placebo on cardiovascular outcomes in 7,020 patients with type 2 diabetes and existing cardiovascular disease. Study participants had a mean age of 63 years, 57% had diabetes for more than 10 years, and 99% had established cardiovascular disease. EMPA-REG OUTCOME showed that over a median follow-up of 3.1 years, treatment reduced the composite outcome of MI, stroke,

Table 10.3A—Cardiovascular outcomes trials of available antihyperglycemic medications completed after the issuance of the FDA 2008 guidelines: DPP-4 inhibitors

	SAVOR-TIMI 53 (181) (n = 16,492)	EXAMINE (186) (n = 5,380)	TECOS (183) (n = 14,671)	CARMELINA (184,187) (n = 6,979)
Intervention	Saxagliptin/placebo	Alogliptin/placebo	Sitagliptin/placebo	Linagliptin/placebo
Main inclusion criteria	Type 2 diabetes and history of or multiple risk factors for CVD	Type 2 diabetes and ACS within 15–90 days before randomization	Type 2 diabetes and preexisting CVD	Type 2 diabetes and high CV and renal risk
A1C inclusion criteria (%)	≥6.5	6.5–11.0	6.5–8.0	6.5–10.0
Age (years) ^{††}	65.1	61.0	65.4	65.8
Race (% white)	75.2	72.7	67.9	80.2
Sex (% male)	66.9	67.9	70.7	62.9
Diabetes duration (years) ^{††}	10.3	7.1	11.6	14.7
Median follow-up (years)	2.1	1.5	3.0	2.2
Statin use (%)	78	91	80	71.8
Metformin use (%)	70	66	82	54.8
Prior CVD/CHF (%)	78/13	100/28	74/18	57/26.8
Mean baseline A1C (%)	8.0	8.0	7.2	7.9
Mean difference in A1C between groups at end of treatment (%)	−0.3 [^]	−0.3 [^]	−0.3 [^]	−0.36 [^]
Year started/reported	2010/2013	2009/2013	2008/2015	2013/2018
Primary outcome [§]	3-point MACE 1.00 (0.89–1.12)	3-point MACE 0.96 (95% UL ≤1.16)	4-point MACE 0.98 (0.89–1.08)	3-point MACE 1.02 (0.89–1.17)
Key secondary outcome [§]	Expanded MACE 1.02 (0.94–1.11)	4-point MACE 0.95 (95% UL ≤1.14)	3-point MACE 0.99 (0.89–1.10)	Kidney composite (ESRD, sustained ≥40% decrease in eGFR, or renal death) 1.04 (0.89–1.22)
Cardiovascular death [§]	1.03 (0.87–1.22)	0.85 (0.66–1.10)	1.03 (0.89–1.19)	0.96 (0.81–1.14)
MI [§]	0.95 (0.80–1.12)	1.08 (0.88–1.33)	0.95 (0.81–1.11)	1.12 (0.90–1.40)
Stroke [§]	1.11 (0.88–1.39)	0.91 (0.55–1.50)	0.97 (0.79–1.19)	0.91 (0.67–1.23)
HF hospitalization [§]	1.27 (1.07–1.51)	1.19 (0.90–1.58)	1.00 (0.83–1.20)	0.90 (0.74–1.08)
Unstable angina hospitalization [§]	1.19 (0.89–1.60)	0.90 (0.60–1.37)	0.90 (0.70–1.16)	0.87 (0.57–1.31)
All-cause mortality [§]	1.11 (0.96–1.27)	0.88 (0.71–1.09)	1.01 (0.90–1.14)	0.98 (0.84–1.13)
Worsening nephropathy [§]	1.08 (0.88–1.32)	—	—	Kidney composite (see above)

—, not assessed/reported; ACS, acute coronary syndrome; CHF, congestive heart failure; CV, cardiovascular; CVD, cardiovascular disease; DPP-4, dipeptidyl peptidase 4; eGFR, estimated glomerular filtration rate; ESRD, end-stage renal disease; GLP-1, glucagon-like peptide 1; HF, heart failure; MACE, major adverse cardiac event; MI, myocardial infarction; UL, upper limit. Data from this table was adapted from Cefalu et al. (188) in the January 2018 issue of *Diabetes Care*. ^{††}Age was reported as means in all trials except EXAMINE, which reported medians; diabetes duration was reported as means in all trials except SAVOR-TIMI 53 and EXAMINE, which reported medians. [§]Outcomes reported as hazard ratio (95% CI). ^{||}Worsening nephropathy is defined as as doubling of creatinine level, initiation of dialysis, renal transplantation, or creatinine >6.0 mg/dL (530 mmol/L) in SAVOR-TIMI 53. Worsening nephropathy was a prespecified exploratory adjudicated outcome in SAVOR-TIMI 53. [^]Significant difference in A1C between groups ($P < 0.05$).

and cardiovascular death by 14% (absolute rate 10.5% vs. 12.1% in the placebo group, HR in the empagliflozin group 0.86; 95% CI 0.74–0.99; $P = 0.04$ for superiority) and cardiovascular death by 38% (absolute rate 3.7% vs. 5.9%, HR 0.62; 95% CI 0.49–0.77; $P < 0.001$) (8). The FDA added an indication for empagliflozin to reduce the risk of major adverse cardiovascular death in adults with type 2 diabetes and cardiovascular disease.

Two large outcomes trials of the SGLT2 inhibitor canagliflozin that separately

assessed 1) the cardiovascular effects of treatment in patients at high risk for major adverse cardiovascular events, and 2) the impact of canagliflozin therapy on cardiorenal outcomes in patients with diabetes-related chronic kidney disease have been conducted (162). First, the Canagliflozin Cardiovascular Assessment Study (CANVAS) Program integrated data from two trials. The CANVAS trial that started in 2009 was partially unblinded prior to completion because of the need to file interim cardiovascular outcomes data for regulatory approval of the

drug (163). Thereafter, the postapproval CANVAS-Renal (CANVAS-R) trial was started in 2014. Combining both of these trials, 10,142 participants with type 2 diabetes were randomized to canagliflozin or placebo and were followed for an average 3.6 years. The mean age of patients was 63 years, and 66% had a history of cardiovascular disease. The combined analysis of the two trials found that canagliflozin significantly reduced the composite outcome of cardiovascular death, MI, or stroke versus placebo (occurring in 26.9 vs. 31.5 participants

Table 10.3B—Cardiovascular outcomes trials of available antihyperglycemic medications completed after the issuance of the FDA 2008 guidelines: GLP-1 receptor agonists

	ELIXA (170) (n = 6,068)	LEADER (165) (n = 9,340)	SUSTAIN-6 (166)* (n = 3,297)	EXSCEL (171) (n = 14,752)	Harmony Outcomes (168) (n = 9,463)	REWIND (169) (n = 9,901)
Intervention	Lixisenatide/ placebo	Liraglutide/ placebo	Semaglutide/ placebo	Exenatide QW/ placebo	Albiglutide/ placebo	Dulaglutide/ placebo
Main inclusion criteria	Type 2 diabetes and history of ACS (<180 days)	Type 2 diabetes and preexisting CVD, CKD, or HF at ≥50 years of age or CV risk at ≥60 years of age	Type 2 diabetes and preexisting CVD, HF, or CKD at ≥50 years of age or CV risk at ≥60 years of age	Type 2 diabetes with or without preexisting CVD	Type 2 diabetes with preexisting CVD	Type 2 diabetes and prior ASCVD event or risk factors for ASCVD
A1C inclusion criteria (%)	5.5–11.0	≥7.0	≥7.0	6.5–10.0	≥7.0	≤9.5
Age (years)††	60.3	64.3	64.6	62	64.1	66.2
Race (% white)	75.2	77.5	83.0	75.8	84.8	75.7
Sex (% male)	69.3	64.3	60.7	62	69.4	53.7
Diabetes duration (years)††	9.3	12.8	13.9	12	13.8	10.5
Median follow-up (years)	2.1	3.8	2.1	3.2	1.6	5.4
Statin use (%)	93	72	73	74	84.0	66
Metformin use (%)	66	76	73	77	73.6	81
Prior CVD/CHF (%)	100/22	81/18	60/24	73.1/16.2	100/20.2	32/9
Mean baseline A1C (%)	7.7	8.7	8.7	8.0	8.7	7.4
Mean difference in A1C between groups at end of treatment (%)	−0.3 [‡]	−0.4 [‡]	−0.7 or −1.0 [†]	−0.53 [‡]	−0.52 [‡]	−0.61 [‡]
Year started/ reported	2010/2015	2010/2016	2013/2016	2010/2017	2015/2018	2011/2019
Primary outcome§	4-point MACE 1.02 (0.89–1.17)	3-point MACE 0.87 (0.78–0.97)	3-point MACE 0.74 (0.58–0.95)	3-point MACE 0.91 (0.83–1.00)	3-point MACE 0.78 (0.68–0.90)	3-point MACE 0.88 (0.79–0.99)
Key secondary outcome§	Expanded MACE (0.90–1.11)	Expanded MACE 0.88 (0.81–0.96)	Expanded MACE 0.74 (0.62–0.89)	Individual components of MACE (see below)	Expanded MACE (with urgent revascularization for unstable angina) 0.78 (0.69–0.90) CV death or HF hospitalization 0.85 (0.70–1.04) Individual components of MACE (see below)	Composite microvascular outcome (eye or renal outcome) 0.87 (0.79–0.95)
Cardiovascular death§	0.98 (0.78–1.22)	0.78 (0.66–0.93)	0.98 (0.65–1.48)	0.88 (0.76–1.02)	0.93 (0.73–1.19)	0.91 (0.78–1.06)
MI§	1.03 (0.87–1.22)	0.86 (0.73–1.00)	0.74 (0.51–1.08)	0.97 (0.85–1.10)	0.75 (0.61–0.90)	0.96 (0.79–1.15)
Stroke§	1.12 (0.79–1.58)	0.86 (0.71–1.06)	0.61 (0.38–0.99)	0.85 (0.70–1.03)	0.86 (0.66–1.14)	0.76 (0.61–0.95)
HF hospitalization§	0.96 (0.75–1.23)	0.87 (0.73–1.05)	1.11 (0.77–1.61)	0.94 (0.78–1.13)	—	0.93 (0.77–1.12)
Unstable angina hospitalization§	1.11 (0.47–2.62)	0.98 (0.76–1.26)	0.82 (0.47–1.44)	1.05 (0.94–1.18)	—	1.14 (0.84–1.54)

Continued on p. S126

Table 10.3B—Continued

	ELIXA (170) (n = 6,068)	LEADER (165) (n = 9,340)	SUSTAIN-6 (166)* (n = 3,297)	EXSCEL (171) (n = 14,752)	Harmony Outcomes (168) (n = 9,463)	REWIND (169) (n = 9,901)
All-cause mortality [§]	0.94 (0.78–1.13)	0.85 (0.74–0.97)	1.05 (0.74–1.50)	0.86 (0.77–0.97)	0.95 (0.79–1.16)	0.90 (0.80–1.01)
Worsening nephropathy [§]	—	0.78 (0.67–0.92)	0.64 (0.46–0.88)	—	—	0.85 (0.77–0.93)

—, not assessed/reported; ACS, acute coronary syndrome; ASCVD, atherosclerotic cardiovascular disease; CHF, congestive heart failure; CKD, chronic kidney disease; CV, cardiovascular; CVD, cardiovascular disease; GLP-1, glucagon-like peptide 1; HF, heart failure; MACE, major adverse cardiac event; MI, myocardial infarction. Data from this table was adapted from Cefalu et al. (188) in the January 2018 issue of *Diabetes Care*. *Powered to rule out a hazard ratio of 1.8; superiority hypothesis not prespecified. ††Age was reported as means in all trials; diabetes duration was reported as means in all trials except EXSCEL, which reported medians. †A1C change of 0.66% with 0.5 mg and 1.05% with 1 mg dose of semaglutide. §Outcomes reported as hazard ratio (95% CI). ||Worsening nephropathy is defined as the new onset of urine albumin-to-creatinine ratio >300 mg/g creatinine or a doubling of the serum creatinine level and an estimated glomerular filtration rate of <45 mL/min/1.73 m², the need for continuous renal replacement therapy, or death from renal disease in LEADER and SUSTAIN-6 and as new macroalbuminuria, a sustained decline in estimated glomerular filtration rate of 30% or more from baseline, or chronic renal replacement therapy in REWIND. Worsening nephropathy was a prespecified exploratory adjudicated outcome in LEADER, SUSTAIN-6, and REWIND. ^Significant difference in A1C between groups ($P < 0.05$).

per 1,000 patient-years; HR 0.86 [95% CI 0.75–0.97]). The specific estimates for canagliflozin versus placebo on the primary composite cardiovascular outcome were HR 0.88 (0.75–1.03) for the CANVAS trial and 0.82 (0.66–1.01) for CANVAS-R, with no heterogeneity found between trials. Of note, there was an increased risk of lower-limb amputation with canagliflozin (6.3 vs. 3.4 participants per 1,000 patient-years; HR 1.97 [95% CI 1.41–2.75]) (9). Second, the Canagliflozin and Renal Events in Diabetes with Established Nephropathy Clinical Evaluation (CRENCE) trial randomized 4,401 patients with type 2 diabetes and chronic diabetes-related kidney disease (UACR >300 mg/g and estimated glomerular filtration rate 30 to <90 mL/min/1.73 m²) to canagliflozin 100 mg daily or placebo (162). The primary outcome was a composite of end-stage kidney disease (ESKD), doubling of serum creatinine, or death from renal or cardiovascular causes. The trial was stopped early due to conclusive evidence of efficacy identified during a prespecified interim analysis with no unexpected safety signals. The risk of the primary composite outcome was 30% lower with canagliflozin treatment when compared with placebo (HR 0.70 [95% CI 0.59–0.82]). Moreover, it reduced the prespecified end point of ESKD alone by 32% (HR 0.68 [95% CI 0.54–0.86]). Canagliflozin was additionally found to have a lower risk of the composite of cardiovascular death, myocardial infarction, or stroke (HR 0.80 [95% CI 0.67–0.95]), as well as lower risk of hospitalizations for heart

failure (HR 0.61 [95% CI 0.47–0.80]), and of the composite of cardiovascular death or hospitalization for heart failure (HR 0.69 [95% CI 0.57–0.83]). In terms of safety, no significant increase in lower-limb amputations, fractures, acute kidney injury, or hyperkalemia was noted for canagliflozin relative to placebo in CRENCE. An increased risk for diabetic ketoacidosis was noted, however, with 2.2 and 0.2 events per 1,000 patient-years noted in the canagliflozin and placebo groups, respectively (HR 10.80 [95% CI 1.39–83.65]) (162).

The Dapagliflozin Effect on Cardiovascular Events—Thrombosis in Myocardial Infarction 58 (DECLARE-TIMI 58) trial was another randomized, double-blind trial that assessed the effects of dapagliflozin versus placebo on cardiovascular and renal outcomes in 17,160 patients with type 2 diabetes and established ASCVD or multiple risk factors for atherosclerotic cardiovascular disease (164). Study participants had a mean age of 64 years, with ~40% of study participants having established ASCVD at baseline—a characteristic of this trial that differs from other large cardiovascular trials where a majority of participants had established cardiovascular disease. DECLARE-TIMI 58 met the prespecified criteria for noninferiority to placebo with respect to MACE but did not show a lower rate of MACE when compared with placebo (8.8% in the dapagliflozin group and 9.4% in the placebo group; HR 0.93; 95% CI 0.84–1.03; $P = 0.17$). A lower rate of cardiovascular death or hospitalization for heart failure was noted (4.9% vs. 5.8%; HR 0.83; 95% CI 0.73–0.95; $P = 0.005$), which reflected a

lower rate of hospitalization for heart failure (HR 0.73; 95% CI 0.61–0.88). No difference was seen in cardiovascular death between groups.

GLP-1 Receptor Agonist Trials

The Liraglutide Effect and Action in Diabetes: Evaluation of Cardiovascular Outcome Results (LEADER) trial was a randomized, double-blind trial that assessed the effect of liraglutide, a glucagon-like peptide 1 (GLP-1) receptor agonist, versus placebo on cardiovascular outcomes in 9,340 patients with type 2 diabetes at high risk for cardiovascular disease or with cardiovascular disease. Study participants had a mean age of 64 years and a mean duration of diabetes of nearly 13 years. Over 80% of study participants had established cardiovascular disease. After a median follow-up of 3.8 years, LEADER showed that the primary composite outcome (MI, stroke, or cardiovascular death) occurred in fewer participants in the treatment group (13.0%) when compared with the placebo group (14.9%) (HR 0.87; 95% CI 0.78–0.97; $P < 0.001$ for noninferiority; $P = 0.01$ for superiority). Deaths from cardiovascular causes were significantly reduced in the liraglutide group (4.7%) compared with the placebo group (6.0%) (HR 0.78; 95% CI 0.66–0.93; $P = 0.007$) (165). The FDA approved the use of liraglutide to reduce the risk of major adverse cardiovascular events, including heart attack, stroke, and cardiovascular death, in adults with type 2 diabetes and established cardiovascular disease.

Table 10.3C—Cardiovascular outcomes trials of available antihyperglycemic medications completed after the issuance of the FDA 2008 guidelines: SGLT2 inhibitors

Intervention	EMPA-REG OUTCOME (8)	CANVAS (9)		DECLARE-TIMI 58 (164)
	(n = 7,020)	(n = 4,330)	(n = 5,812)	(n = 17,160)
	Empagliflozin/ placebo		Canagliflozin/ placebo	Dapagliflozin/placebo
Main inclusion criteria	Type 2 diabetes and preexisting CVD		Type 2 diabetes and preexisting CVD at ≥30 years of age or >2 CV risk factors at ≥50 years of age	Type 2 diabetes and established ASCVD or multiple risk factors for ASCVD
A1C inclusion criteria (%)	7.0–10.0		7.0–10.5	≥6.5
Age (years) ^{††}	63.1		63.3	64.0
Race (% white)	72.4		78.3	79.6
Sex (% male)	71.5		64.2	62.6
Diabetes duration (years) ^{††}	57% >10		13.5	11.0
Median follow-up (years)	3.1	5.7	2.1	4.2
Statin use (%)	77		75	75 (statin or ezetimibe use)
Metformin use (%)	74		77	82
Prior CVD/CHF (%)	99/10		65.6/14.4	40/10
Mean baseline A1C (%)	8.1		8.2	8.3
Mean difference in A1C between groups at end of treatment (%)	−0.3 [‡]		−0.58 [§]	−0.43 [§]
Year started/reported	2010/2015		2009/2017	2013/2018
Primary outcome [§]	3-point MACE 0.86 (0.74–0.99)	3-point MACE 0.86 (0.75–0.97) [§]		Progression to albuminuria** 0.73 (0.47–0.77) 3-point MACE 0.93 (0.84–1.03) CV death or HF hospitalization 0.83 (0.73–0.95)
Key secondary outcome [§]	4-point MACE	All-cause and CV mortality (see below)	40% reduction in composite eGFR, renal replacement, renal death 0.60 (0.47–0.77)	Death from any cause 0.93 (0.82–1.04) Renal composite (≥40% decrease in eGFR rate to <60 mL/min/1.73m ² , new ESRD, or death from renal or CV causes) 0.76 (0.67–0.87)
Cardiovascular death [§]	0.62 (0.49–0.77)	0.96 (0.77–1.18) [¶] 0.87 (0.72–1.06) [#]		0.98 (0.82–1.17)
MI [§]	0.87 (0.70–1.09)	0.85 (0.65–1.11)	0.85 (0.61–1.19)	0.89 (0.77–1.01)
Stroke [§]	1.18 (0.89–1.56)	0.97 (0.70–1.35)	0.82 (0.57–1.18)	1.01 (0.84–1.21)
HF hospitalization [§]	0.65 (0.50–0.85)	0.77 (0.55–1.08)	0.56 (0.38–0.83)	0.73 (0.61–0.88)
Unstable angina hospitalization [§]	0.99 (0.74–1.34)	—		—
All-cause mortality [§]	0.68 (0.57–0.82)	0.87 (0.74–1.01) ^{††} 0.90 (0.76–1.07) ^{###}		0.93 (0.82–1.04)
Worsening nephropathy [§]	0.61 (0.53–0.70)	0.60 (0.47–0.77)		0.53 (0.43–0.66)

—, not assessed/reported; CHF, congestive heart failure; CV, cardiovascular; CVD, cardiovascular disease; eGFR, estimated glomerular filtration rate; ESRD, end-stage renal disease; HF, heart failure; MACE, major adverse cardiac event; MI, myocardial infarction; SGLT2, sodium–glucose cotransporter 2. Data from this table was adapted from Cefalu et al. (188) in the January 2018 issue of *Diabetes Care*. **On the basis of prespecified outcomes, the renal outcomes are not viewed as statistically significant. ††Age was reported as means in all trials; diabetes duration was reported as means in all trials except EMPA-REG OUTCOME, which reported as percentage of population with diabetes duration > 10 years, and DECLARE-TIMI 58, which reported median. ‡A1C change of 0.30 in EMPA-REG OUTCOME is based on pooled results for both doses (i.e., 0.24% for 10 mg and 0.36% for 25 mg of empagliflozin). §Outcomes reported as hazard ratio (95% CI). | | Worsening nephropathy is defined as the new onset of urine albumin-to-creatinine ratio >300 mg/g creatinine or a doubling of the serum creatinine level and an estimated glomerular filtration rate of <45 mL/min/1.73 m², the need for continuous renal replacement therapy, or death from renal disease in EMPA-REG OUTCOME and as ≥40% decrease in estimated glomerular filtration rate to <60 mL/min/1.73 m², ESRD, or death from renal cause in DECLARE-TIMI 58. Worsening nephropathy was a prespecified exploratory adjudicated outcome in DECLARE-TIMI 58 but not in EMPA-REG OUTCOME. ¶Truncated data set (prespecified in treating hierarchy as the principal data set for analysis for superiority of all-cause mortality and cardiovascular death in the CANVAS Program). †††Significant difference in A1C between groups (P < 0.05). #Nontruncated data set. †††Truncated integrated data set (refers to pooled data from CANVAS after 20 November 2012 plus CANVAS-R; prespecified in treating hierarchy as the principal data set for analysis for superiority of all-cause mortality and cardiovascular death in the CANVAS Program). ###Nontruncated integrated data (refers to pooled data from CANVAS, including before 20 November 2012 plus CANVAS-R).

Results from a moderate-sized trial of another GLP-1 receptor agonist, semaglutide, were consistent with the LEADER trial (166). Semaglutide is a once-weekly GLP-1 receptor agonist approved by the FDA for the treatment of type 2 diabetes. The Trial to Evaluate Cardiovascular and Other Long-term Outcomes With Semaglutide in Subjects With Type 2 Diabetes (SUSTAIN-6) was the initial randomized trial powered to test noninferiority of semaglutide for the purpose of initial regulatory approval. In this study, 3,297 patients with type 2 diabetes were randomized to receive once-weekly semaglutide (0.5 mg or 1.0 mg) or placebo for 2 years. The primary outcome (the first occurrence of cardiovascular death, nonfatal MI, or nonfatal stroke) occurred in 108 patients (6.6%) in the semaglutide group vs. 146 patients (8.9%) in the placebo group (HR 0.74; 95% CI 0.58–0.95; $P < 0.001$). More patients discontinued treatment in the semaglutide group because of adverse events, mainly gastrointestinal. The cardiovascular effects of the oral formulation of semaglutide compared with placebo have been assessed in Peptide Innovation for Early Diabetes Treatment (PIONEER) 6, a preapproval trial designed to rule out an unacceptable increase in cardiovascular risk. In this trial of 3,183 patients with type 2 diabetes and high cardiovascular risk followed for a median of 15.9 months, oral semaglutide was noninferior to placebo for the primary composite outcome of cardiovascular death, nonfatal myocardial infarction, or nonfatal stroke (HR 0.79; 95% CI 0.57–1.11; $P < 0.001$ for noninferiority) (167). The cardiovascular effects of this formulation of semaglutide will be further tested in a large, longer-term outcomes trial.

The Harmony Outcomes trial randomized 9,463 patients with type 2 diabetes and cardiovascular disease to once-weekly subcutaneous albiglutide or matching placebo, in addition to their standard care. Over a median duration of 1.6 years, the GLP-1 receptor agonist reduced the risk of cardiovascular death, MI, or stroke to an incidence rate of 4.6 events per 100 person-years in the albiglutide group vs. 5.9 events in the placebo group (HR ratio 0.78, $P = 0.0006$ for superiority) (168). This agent is not currently available for clinical use.

The Researching Cardiovascular Events With a Weekly Incretin in Diabetes (REWIND) trial was a randomized, double-

blind, placebo-controlled trial that assessed the effect of the once-weekly GLP-1 receptor agonist dulaglutide versus placebo on MACE in ~9,990 patients with type 2 diabetes at risk for cardiovascular events or with a history of cardiovascular disease (169). Study participants had a mean age of 66 years and a mean duration of diabetes of ~10 years. Approximately 32% of participants had prior history of atherosclerotic cardiovascular events at baseline. After a median follow-up of 5.4 years, the primary composite outcome of nonfatal myocardial infarction, nonfatal stroke, or death from cardiovascular causes occurred in 12.0% and 13.4% of participants in the dulaglutide and placebo treatment groups, respectively (HR 0.88; 95% CI 0.79–0.99; $P = 0.026$). These findings equated to incidence rates of 2.4 and 2.7 events per 100 person-years, respectively. The results were consistent across the subgroups of patients with and without prior history of CV events. All-cause mortality did not differ between groups ($P = 0.067$).

The Evaluation of Lixisenatide in Acute Coronary Syndrome (ELIXA) trial studied the once-daily GLP-1 receptor agonist lixisenatide on cardiovascular outcomes in patients with type 2 diabetes who had had a recent acute coronary event (170). A total of 6,068 patients with type 2 diabetes with a recent hospitalization for MI or unstable angina within the previous 180 days were randomized to receive lixisenatide or placebo in addition to standard care and were followed for a median of ~2.1 years. The primary outcome of cardiovascular death, MI, stroke, or hospitalization for unstable angina occurred in 406 patients (13.4%) in the lixisenatide group vs. 399 (13.2%) in the placebo group (HR 1.2 [95% CI 0.89–1.17]), which demonstrated the noninferiority of lixisenatide to placebo ($P < 0.001$) but did not show superiority ($P = 0.81$).

The Exenatide Study of Cardiovascular Event Lowering (EXSCCEL) trial also reported results with the once-weekly GLP-1 receptor agonist extended-release exenatide and found that major adverse cardiovascular events were numerically lower with use of extended-release exenatide compared with placebo, although this difference was not statistically significant (171). A total of 14,752 patients with type 2 diabetes (of whom 10,782 [73.1%] had previous cardiovascular

disease) were randomized to receive extended-release exenatide 2 mg or placebo and followed for a median of 3.2 years. The primary end point of cardiovascular death, MI, or stroke occurred in 839 patients (11.4%; 3.7 events per 100 person-years) in the exenatide group and in 905 patients (12.2%; 4.0 events per 100 person-years) in the placebo group (HR 0.91; 95% CI 0.83–1.00; $P < 0.001$ for noninferiority) but was not superior to placebo with respect to the primary end point ($P = 0.06$ for superiority). However, all-cause mortality was lower in the exenatide group (HR 0.86 [95% CI 0.77–0.97]). The incidence of acute pancreatitis, pancreatic cancer, medullary thyroid carcinoma, and serious adverse events did not differ significantly between the two groups.

In summary, there are now numerous large randomized controlled trials reporting statistically significant reductions in cardiovascular events for three of the FDA-approved SGLT2 inhibitors (empagliflozin, canagliflozin, and dapagliflozin) and four FDA-approved GLP-1 receptor agonists (liraglutide, albiglutide [although that agent was removed from the market for business reasons], semaglutide [lower risk of cardiovascular events in a moderate-sized clinical trial but one not powered as a cardiovascular outcomes trial], and dulaglutide). Meta-analyses of the trials reported to date suggest that GLP-1 receptor agonists and SGLT2 inhibitors reduce risk of atherosclerotic major adverse cardiovascular events to a comparable degree in patients with type 2 diabetes and established ASCVD (172). SGLT2 inhibitors also appear to reduce risk of heart failure hospitalization and progression of kidney disease in patients with established ASCVD, multiple risk factors for ASCVD, or diabetic kidney disease (173). In patients with type 2 diabetes and established ASCVD, multiple ASCVD risk factors, or diabetic kidney disease, an SGLT2 inhibitor with demonstrated cardiovascular benefit is recommended to reduce the risk of major adverse cardiovascular events and heart failure hospitalization. In patients with type 2 diabetes and established ASCVD or multiple risk factors for ASCVD, a glucagon-like peptide 1 receptor agonist with demonstrated cardiovascular benefit is recommended to reduce the risk of major adverse cardiovascular events. For

many patients, use of either an SGLT2 inhibitor or a GLP-1 receptor agonist to reduce cardiovascular risk is appropriate. It is unknown whether use of both classes of drugs will provide an additive cardiovascular outcomes benefit.

Glucose-Lowering Therapies and Heart Failure

As many as 50% of patients with type 2 diabetes may develop heart failure (174). Data on the effects of glucose-lowering agents on heart failure outcomes have demonstrated that thiazolidinediones have a strong and consistent relationship with increased risk of heart failure (175–177). Therefore, thiazolidinedione use should be avoided in patients with symptomatic heart failure. Restrictions to use of metformin in patients with medically treated heart failure were removed by the FDA in 2006 (178). In fact, observational studies of patients with type 2 diabetes and heart failure suggest that metformin users have better outcomes than patients treated with other antihyperglycemic agents (179). Metformin may be used for the management of hyperglycemia in patients with stable heart failure as long as kidney function remains within the recommended range for use (180).

Recent studies examining the relationship between DPP-4 inhibitors and heart failure have had mixed results. The Saxagliptin Assessment of Vascular Outcomes Recorded in Patients with Diabetes Mellitus – Thrombolysis in Myocardial Infarction 53 (SAVOR-TIMI 53) study showed that patients treated with the DPP-4 inhibitor saxagliptin were more likely to be hospitalized for heart failure than those given placebo (3.5% vs. 2.8%, respectively) (181). However, three other cardiovascular outcomes trials, Examination of Cardiovascular Outcomes with Alogliptin versus Standard of Care (EXAMINE) (182), Trial Evaluating Cardiovascular Outcomes with Sitagliptin (TECOS) (183), and the Cardiovascular and Renal Microvascular Outcome Study With Linagliptin (CARMELINA) (184) did not find a significant increase in risk of heart failure hospitalization with DPP-4 inhibitor use compared with placebo. No increased risk of heart failure hospitalization has been identified in the cardiovascular outcomes trials of the GLP-1 receptor agonists lixisenatide, liraglutide, semaglutide, exenatide QW, albiglutide, or dulaglutide

compared with placebo (**Table 10.3B**) (165,166,169–171).

Reduced incidence of heart failure has been observed with the use of SGLT2 inhibitors (162,164). In EMPA-REG OUTCOME, the addition of empagliflozin to standard care led to a significant 35% reduction in hospitalization for heart failure compared with placebo (8). Although the majority of patients in the study did not have heart failure at baseline, this benefit was consistent in patients with and without a history of heart failure (10). Similarly, in CANVAS and DECLARE-TIMI 58, there were 33% and 27% reductions in hospitalization for heart failure, respectively, with SGLT2 inhibitor use versus placebo (9,164). Additional data from the CREDENCE trial with canagliflozin showed a 39% reduction in hospitalization for heart failure, and 31% reduction in the composite of cardiovascular death or hospitalization for heart failure, in a diabetic kidney disease population with albuminuria (UACR of >300 to 5,000 mg/g) (162). These combined findings from four large outcomes trials of three different SGLT2 inhibitors are highly consistent and clearly indicate robust benefits of SGLT2 inhibitors in the prevention of heart failure hospitalizations. They also suggest, but do not prove, that SGLT2 inhibitors may be beneficial in patients with established heart failure. This hypothesis is being specifically evaluated in several large outcomes trials in patients with established heart failure, both with and without diabetes, to determine the efficacy of SGLT2 inhibitors in the treatment of heart failure with reduced and preserved ejection fraction.

References

1. American Diabetes Association. Economic costs of diabetes in the U.S. in 2017. *Diabetes Care* 2018;41:917–928
2. Ali MK, Bullard KM, Saaddine JB, Cowie CC, Imperatore G, Gregg EW. Achievement of goals in U.S. diabetes care, 1999–2010. *N Engl J Med* 2013;368:1613–1624
3. Buse JB, Ginsberg HN, Bakris GL, et al.; American Heart Association; American Diabetes Association. Primary prevention of cardiovascular diseases in people with diabetes mellitus: a scientific statement from the American Heart Association and the American Diabetes Association. *Diabetes Care* 2007;30:162–172
4. Gaede P, Lund-Andersen H, Parving H-H, Pedersen O. Effect of a multifactorial intervention on mortality in type 2 diabetes. *N Engl J Med* 2008;358:580–591

5. Cavender MA, Steg PG, Smith SC Jr, et al.; REACH Registry Investigators. Impact of diabetes mellitus on hospitalization for heart failure, cardiovascular events, and death: outcomes at 4 years from the Reduction of Atherothrombosis for Continued Health (REACH) registry. *Circulation* 2015;132:923–931
6. McAllister DA, Read SH, Kerssens J, et al. Incidence of hospitalization for heart failure and case-fatality among 3.25 million people with and without diabetes mellitus. *Circulation* 2018;138:2774–2786
7. Lam CSP, Voors AA, de Boer RA, Solomon SD, van Velthuisen DJ. Heart failure with preserved ejection fraction: from mechanisms to therapies. *Eur Heart J* 2018;39:2780–2792
8. Zinman B, Wanner C, Lachin JM, et al.; EMPA-REG OUTCOME Investigators. Empagliflozin, cardiovascular outcomes, and mortality in type 2 diabetes. *N Engl J Med* 2015;373:2117–2128
9. Neal B, Perkovic V, Mahaffey KW, et al.; CANVAS Program Collaborative Group. Canagliflozin and cardiovascular and renal events in type 2 diabetes. *N Engl J Med* 2017;377:644–657
10. Fitchett D, Butler J, van de Borne P, et al.; EMPA-REG OUTCOME® trial investigators. Effects of empagliflozin on risk for cardiovascular death and heart failure hospitalization across the spectrum of heart failure risk in the EMPA-REG OUTCOME® trial. *Eur Heart J* 2018;39:363–370
11. Blood Pressure Lowering Treatment Trialists' Collaboration. Blood pressure-lowering treatment based on cardiovascular risk: a meta-analysis of individual patient data. *Lancet* 2014;384:591–598
12. Grundy SM, Stone NJ, Bailey AL, et al. 2018 AHA/ACC/AACVPR/AAPA/ABC/ACPM/ADA/AGS/APhA/ASPC/NLA/PCNA Guideline on the management of blood cholesterol: executive summary: a report of the American College of Cardiology/American Heart Association Task Force on Clinical Practice Guidelines. *J Am Coll Cardiol* 2019;73:3168–3209
13. Muntner P, Colantonio LD, Cushman M, et al. Validation of the atherosclerotic cardiovascular disease Pooled Cohort risk equations. *JAMA* 2014;311:1406–1415
14. DeFilippis AP, Young R, McEvoy JW, et al. Risk score overestimation: the impact of individual cardiovascular risk factors and preventive therapies on the performance of the American Heart Association-American College of Cardiology-Atherosclerotic Cardiovascular Disease risk score in a modern multi-ethnic cohort. *Eur Heart J* 2017;38:598–608
15. Bohula EA, Morrow DA, Giugliano RP, et al. Atherothrombotic risk stratification and ezetimibe for secondary prevention. *J Am Coll Cardiol* 2017;69:911–921
16. Bohula EA, Bonaca MP, Braunwald E, et al. Atherothrombotic risk stratification and the efficacy and safety of vorapaxar in patients with stable ischemic heart disease and previous myocardial infarction. *Circulation* 2016;134:304–313
17. de Boer IH, Bangalore S, Benetos A, et al. Diabetes and hypertension: a position statement by the American Diabetes Association. *Diabetes Care* 2017;40:1273–1284
18. Bobrie G, Genès N, Vaur L, et al. Is “isolated home” hypertension as opposed to

- “isolated office” hypertension a sign of greater cardiovascular risk? *Arch Intern Med* 2001;161:2205–2211
19. Segal R, Facchetti R, Bombelli M, et al. Prognostic value of ambulatory and home blood pressures compared with office blood pressure in the general population: follow-up results from the Pressioni Arteriose Monitorate e Loro Associazioni (PAMELA) study. *Circulation* 2005;111:1777–1783
20. Omboni S, Gazzola T, Carabelli G, Parati G. Clinical usefulness and cost effectiveness of home blood pressure telemonitoring: meta-analysis of randomized controlled studies. *J Hypertens* 2013;31:455–467; discussion 467–468
21. Emdin CA, Rahimi K, Neal B, Callender T, Perkovic V, Patel A. Blood pressure lowering in type 2 diabetes: a systematic review and meta-analysis. *JAMA* 2015;313:603–615
22. Arguedas JA, Leiva V, Wright JM. Blood pressure targets for hypertension in people with diabetes mellitus. *Cochrane Database Syst Rev* 2013;10:CD008277
23. Ettehad D, Emdin CA, Kiran A, et al. Blood pressure lowering for prevention of cardiovascular disease and death: a systematic review and meta-analysis. *Lancet* 2016;387:957–967
24. Brunström M, Carlberg B. Effect of antihypertensive treatment at different blood pressure levels in patients with diabetes mellitus: systematic review and meta-analysis. *BMJ* 2016;352:i717
25. Bangalore S, Kumar S, Lobach I, Messerli FH. Blood pressure targets in subjects with type 2 diabetes mellitus/impaired fasting glucose: observations from traditional and Bayesian random-effects meta-analyses of randomized trials. *Circulation* 2011;123:2799–2810
26. Thomopoulos C, Parati G, Zanchetti A. Effects of blood-pressure-lowering treatment on outcome incidence in hypertension: 10 - should blood pressure management differ in hypertensive patients with and without diabetes mellitus? Overview and meta-analyses of randomized trials. *J Hypertens* 2017;35:922–944
27. Xie X, Atkins E, Lv J, et al. Effects of intensive blood pressure lowering on cardiovascular and renal outcomes: updated systematic review and meta-analysis. *Lancet* 2016;387:435–443
28. Cushman WC, Evans GW, Byington RP, et al.; ACCORD Study Group. Effects of intensive blood-pressure control in type 2 diabetes mellitus. *N Engl J Med* 2010;362:1575–1585
29. Patel A, MacMahon S, Chalmers J, et al.; ADVANCE Collaborative Group. Effects of a fixed combination of perindopril and indapamide on macrovascular and microvascular outcomes in patients with type 2 diabetes mellitus (the ADVANCE trial): a randomised controlled trial. *Lancet* 2007;370:829–840
30. Bakris GL. The implications of blood pressure measurement methods on treatment targets for blood pressure. *Circulation* 2016;134:904–905
31. Margolis KL, O’Connor PJ, Morgan TM, et al. Outcomes of combined cardiovascular risk factor management strategies in type 2 diabetes: the ACCORD randomized trial. *Diabetes Care* 2014;37:1721–1728
32. Buckley LF, Dixon DL, Wohlford GF 4th, Wijesinghe DS, Baker WL, Van Tassel BW. Intensive versus standard blood pressure control in SPRINT-eligible participants of ACCORD-BP. *Diabetes Care* 2017;40:1733–1738
33. Brouwer TF, Vehmeijer JT, Kalkman DN, et al. Intensive blood pressure lowering in patients with and patients without type 2 diabetes: a pooled analysis from two randomized trials. *Diabetes Care* 2018;41:1142–1148
34. Lamprea-Montealegre JA, de Boer IH. Reevaluating the evidence for blood pressure targets in type 2 diabetes. *Diabetes Care* 2018;41:1132–1133
35. de Boer IH, Bakris G, Cannon CP. Individualizing blood pressure targets for people with diabetes and hypertension: comparing the ADA and the ACC/AHA recommendations. *JAMA* 2018;319:1319–1320
36. Basu S, Sussman JB, Rigdon J, Steimle L, Denton BT, Hayward RA. Benefit and harm of intensive blood pressure treatment: derivation and validation of risk models using data from the SPRINT and ACCORD trials. *PLoS Med* 2017;14:e1002410
37. Phillips RA, Xu J, Peterson LE, Arnold RM, Diamond JA, Schussheim AE. Impact of cardiovascular risk on the relative benefit and harm of intensive treatment of hypertension. *J Am Coll Cardiol* 2018;71:1601–1610
38. Whelton PK, Carey RM, Aronow WS, et al. 2017 ACC/AHA/AAPA/ABC/ACPM/AGS/APhA/ASH/ASPC/NMA/PCNA guideline for the prevention, detection, evaluation, and management of high blood pressure in adults: a report of the American College of Cardiology/American Heart Association Task Force on Clinical Practice Guidelines. *J Am Coll Cardiol* 2018;71:e127–e248
39. Wright JT Jr, Williamson JD, Whelton PK, et al.; SPRINT Research Group. A randomized trial of intensive versus standard blood-pressure control. *N Engl J Med* 2015;373:2103–2116
40. Beddhu S, Greene T, Boucher R, et al. Intensive systolic blood pressure control and incident chronic kidney disease in people with and without diabetes mellitus: secondary analyses of two randomised controlled trials. *Lancet Diabetes Endocrinol* 2018;6:555–563
41. Sink KM, Evans GW, Shorr RI, et al. Syncope, hypotension, and falls in the treatment of hypertension: results from the randomized clinical systolic blood pressure intervention trial. *J Am Geriatr Soc* 2018;66:679–686
42. Abalos E, Duley L, Steyn DW. Antihypertensive drug therapy for mild to moderate hypertension during pregnancy. *Cochrane Database Syst Rev* 2014;2:CD002252
43. Magee LA, von Dadelszen P, Rey E, et al. Less-tight versus tight control of hypertension in pregnancy. *N Engl J Med* 2015;372:407–417
44. Brown MA, Magee LA, Kenny LC, et al.; International Society for the Study of Hypertension in Pregnancy (ISSHP). Hypertensive disorders of pregnancy: ISSHP classification, diagnosis, and management recommendations for international practice. *Hypertension* 2018;72:24–43
45. American College of Obstetricians and Gynecologists; Task Force on Hypertension in Pregnancy. Hypertension in pregnancy. Report of the American College of Obstetricians and Gynecologists’ Task Force on Hypertension in Pregnancy. *Obstet Gynecol* 2013;122:1122–1131
46. Al-Balas M, Bozzo P, Einarson A. Use of diuretics during pregnancy. *Can Fam Physician* 2009;55:44–45
47. Irgens HU, Reisaeter L, Irgens LM, Lie RT. Long term mortality of mothers and fathers after pre-eclampsia: population based cohort study. *BMJ* 2001;323:1213–1217
48. Sacks FM, Svetkey LP, Vollmer WM, et al.; DASH-Sodium Collaborative Research Group. Effects on blood pressure of reduced dietary sodium and the Dietary Approaches to Stop Hypertension (DASH) diet. *N Engl J Med* 2001;344:3–10
49. James PA, Oparil S, Carter BL, et al. 2014 evidence-based guideline for the management of high blood pressure in adults: report from the panel members appointed to the Eighth Joint National Committee (JNC 8). *JAMA* 2014;311:507–520
50. Bakris GL, Weir MR; Study of Hypertension and the Efficacy of Lotrel in Diabetes (SHIELD) Investigators. Achieving goal blood pressure in patients with type 2 diabetes: conventional versus fixed-dose combination approaches. *J Clin Hypertens (Greenwich)* 2003;5:202–209
51. Feldman RD, Zou GY, Vandervoort MK, Wong CJ, Nelson SAE, Feagan BG. A simplified approach to the treatment of uncomplicated hypertension: a cluster randomized, controlled trial. *Hypertension* 2009;53:646–653
52. Webster R, Salam A, de Silva HA, Selak V, Stepien S, Rajapakse S, et al. Fixed low-dose triple combination antihypertensive medication vs usual care for blood pressure control in patients with mild to moderate hypertension in Sri Lanka: a randomized clinical trial. *JAMA* 2018;320:566–579
53. Bangalore S, Kamalakkannan G, Parkar S, Messerli FH. Fixed-dose combinations improve medication compliance: a meta-analysis. *Am J Med* 2007;120:713–719
54. Catalá-López F, Macías Saint-Gerons D, González-Bermejo D, et al. Cardiovascular and renal outcomes of renin-angiotensin system blockade in adult patients with diabetes mellitus: a systematic review with network meta-analyses. *PLoS Med* 2016;13:e1001971
55. Palmer SC, Mavridis D, Navarese E, et al. Comparative efficacy and safety of blood pressure-lowering agents in adults with diabetes and kidney disease: a network meta-analysis. *Lancet* 2015;385:2047–2056
56. Barzilay JI, Davis BR, Bettencourt J, et al.; ALLHAT Collaborative Research Group. Cardiovascular outcomes using doxazosin vs. chlorthalidone for the treatment of hypertension in older adults with and without glucose disorders: a report from the ALLHAT study. *J Clin Hypertens (Greenwich)* 2004;6:116–125
57. Weber MA, Bakris GL, Jamerson K, et al.; ACCOMPLISH Investigators. Cardiovascular events during differing hypertension therapies in patients with diabetes. *J Am Coll Cardiol* 2010;56:77–85
58. Bangalore S, Fakheri R, Toklu B, Messerli FH. Diabetes mellitus as a compelling indication for use of renin angiotensin system blockers: systematic review and meta-analysis of randomized trials. *BMJ* 2016;352:i438
59. Carlberg B, Samuelsson O, Lindholm LH. Atenolol in hypertension: is it a wise choice? *Lancet* 2004;364:1684–1689
60. Yusuf S, Teo KK, Pogue J, et al.; ONTARGET Investigators. Telmisartan, ramipril, or both in

- patients at high risk for vascular events. *N Engl J Med* 2008;358:1547–1559
61. Fried LF, Emanuele N, Zhang JH, et al.; VA NEPHRON-D Investigators. Combined angiotensin inhibition for the treatment of diabetic nephropathy. *N Engl J Med* 2013;369:1892–1903
62. Makani H, Bangalore S, Desouza KA, Shah A, Messerli FH. Efficacy and safety of dual blockade of the renin-angiotensin system: meta-analysis of randomised trials. *BMJ* 2013;346:f360
63. Zhao P, Xu P, Wan C, Wang Z. Evening versus morning dosing regimen drug therapy for hypertension. *Cochrane Database Syst Rev* 2011;10:CD004184
64. Hermida RC, Ayala DE, Mojón A, Fernández JR. Influence of time of day of blood pressure-lowering treatment on cardiovascular risk in hypertensive patients with type 2 diabetes. *Diabetes Care* 2011;34:1270–1276
65. Nilsson E, Gasparini A, Årnlöv J, et al. Incidence and determinants of hyperkalemia and hypokalemia in a large healthcare system. *Int J Cardiol* 2017;245:277–284
66. Bandak G, Sang Y, Gasparini A, et al. Hyperkalemia after initiating renin-angiotensin system blockade: the Stockholm Creatinine Measurements (SCREAM) project. *J Am Heart Assoc* 2017;6:e005428
67. Hughes-Austin JM, Rifkin DE, Beben T, et al. The relation of serum potassium concentration with cardiovascular events and mortality in community-living individuals. *Clin J Am Soc Nephrol* 2017;12:245–252
68. James MT, Grams ME, Woodward M, et al.; CKD Prognosis Consortium. A meta-analysis of the association of estimated GFR, albuminuria, diabetes mellitus, and hypertension with acute kidney injury. *Am J Kidney Dis* 2015;66:602–612
69. Iliescu R, Lohmeier TE, Tudorancea I, Laffin L, Bakris GL. Renal denervation for the treatment of resistant hypertension: review and clinical perspective. *Am J Physiol Renal Physiol* 2015;309:F583–F594
70. Bakris GL, Agarwal R, Chan JC, et al.; Mineralocorticoid Receptor Antagonist Tolerability Study–Diabetic Nephropathy (ARTS-DN) Study Group. Effect of finerenone on albuminuria in patients with diabetic nephropathy: a randomized clinical trial. *JAMA* 2015;314:884–894
71. Williams B, MacDonald TM, Morant S, et al.; British Hypertension Society's PATHWAY Studies Group. Spironolactone versus placebo, bisoprolol, and doxazosin to determine the optimal treatment for drug-resistant hypertension (PATHWAY-2): a randomised, double-blind, crossover trial. *Lancet* 2015;386:2059–2068
72. Filippatos G, Anker SD, Böhm M, et al. A randomized controlled study of finerenone vs. eplerenone in patients with worsening chronic heart failure and diabetes mellitus and/or chronic kidney disease. *Eur Heart J* 2016;37:2105–2114
73. Bomback AS, Klemmer PJ. Mineralocorticoid receptor blockade in chronic kidney disease. *Blood Purif* 2012;33:119–124
74. Jensen MD, Ryan DH, Apovian CM, et al.; American College of Cardiology/American Heart Association Task Force on Practice Guidelines; Obesity Society. 2013 AHA/ACC/TOS guideline for the management of overweight and obesity in adults: a report of the American College of Cardiology/American Heart Association Task Force on Practice Guidelines and The Obesity Society. *J Am Coll Cardiol* 2014;63(25 Pt B):2985–3023
75. Estruch R, Ros E, Salas-Salvadó J, et al.; PREDIMED Study Investigators. Primary prevention of cardiovascular disease with a Mediterranean diet supplemented with extra-virgin olive oil or nuts. *N Engl J Med* 2018;378:e34
76. Eckel RH, Jakicic JM, Ard JD, et al. 2013 AHA/ACC guideline on lifestyle management to reduce cardiovascular risk: a report of the American College of Cardiology/American Heart Association Task Force on Practice Guidelines. *Circulation* 2013;129:S76–S99
77. Chasman DI, Posada D, Subrahmanyam L, Cook NR, Stanton VP Jr, Ridker PM. Pharmacogenetic study of statin therapy and cholesterol reduction. *JAMA* 2004;291:2821–2827
78. Meek C, Wierzbicki AS, Jewkes C, et al. Daily and intermittent rosuvastatin 5 mg therapy in statin intolerant patients: an observational study. *Curr Med Res Opin* 2012;28:371–378
79. Mihaylova B, Emberson J, Blackwell L, et al.; Cholesterol Treatment Trialists' (CTT) Collaborators. The effects of lowering LDL cholesterol with statin therapy in people at low risk of vascular disease: meta-analysis of individual data from 27 randomised trials. *Lancet* 2012;380:581–590
80. Baigent C, Keech A, Kearney PM, et al.; Cholesterol Treatment Trialists' (CTT) Collaborators. Efficacy and safety of cholesterol-lowering treatment: prospective meta-analysis of data from 90,056 participants in 14 randomised trials of statins. *Lancet* 2005;366:1267–1278
81. Pyörälä K, Pedersen TR, Kjekshus J, Faergeman O, Olsson AG, Thorgeirsson G. Cholesterol lowering with simvastatin improves prognosis of diabetic patients with coronary heart disease. A subgroup analysis of the Scandinavian Simvastatin Survival Study (4S). *Diabetes Care* 1997;20:614–620
82. Collins R, Armitage J, Parish S, Sleight P, Peto R; Heart Protection Study Collaborative Group. MRC/BHF Heart Protection Study of cholesterol-lowering with simvastatin in 5963 people with diabetes: a randomised placebo-controlled trial. *Lancet* 2003;361:2005–2016
83. Goldberg RB, Mellies MJ, Sacks FM, et al.; The Care Investigators. Cardiovascular events and their reduction with pravastatin in diabetic and glucose-intolerant myocardial infarction survivors with average cholesterol levels: subgroup analyses in the Cholesterol and Recurrent Events (CARE) trial. *Circulation* 1998;98:2513–2519
84. Shepherd J, Barter P, Carmena R, et al. Effect of lowering LDL cholesterol substantially below currently recommended levels in patients with coronary heart disease and diabetes: the Treating to New Targets (TNT) study. *Diabetes Care* 2006;29:1220–1226
85. Sever PS, Poulter NR, Dahlöf B, et al. Reduction in cardiovascular events with atorvastatin in 2,532 patients with type 2 diabetes: Anglo-Scandinavian Cardiac Outcomes Trial–lipid-lowering arm (ASCOT-LLA). *Diabetes Care* 2005;28:1151–1157
86. Knopp RH, d'Emden M, Smilde JG, Pocock SJ. Efficacy and safety of atorvastatin in the prevention of cardiovascular end points in subjects with type 2 diabetes: the Atorvastatin Study for Prevention of Coronary Heart Disease Endpoints in Non-Insulin-Dependent Diabetes Mellitus (ASPEN). *Diabetes Care* 2006;29:1478–1485
87. Colhoun HM, Betteridge DJ, Durrington PN, et al.; CARDS investigators. Primary prevention of cardiovascular disease with atorvastatin in type 2 diabetes in the Collaborative Atorvastatin Diabetes Study (CARDS): multicentre randomised placebo-controlled trial. *Lancet* 2004;364:685–696
88. Kearney PM, Blackwell L, Collins R, et al.; Cholesterol Treatment Trialists' (CTT) Collaborators. Efficacy of cholesterol-lowering therapy in 18,686 people with diabetes in 14 randomised trials of statins: a meta-analysis. *Lancet* 2008;371:117–125
89. Taylor F, Huffman MD, Macedo AF, et al. Statins for the primary prevention of cardiovascular disease. *Cochrane Database Syst Rev* 2013;1:CD004816
90. Carter AA, Gomes T, Camacho X, Juurlink DN, Shah BR, Mamdani MM. Risk of incident diabetes among patients treated with statins: population based study [published correction appears in *BMJ* 2013;347:f4356]. *BMJ* 2013;346:f2610
91. Baigent C, Blackwell L, Emberson J, et al.; Cholesterol Treatment Trialists' (CTT) Collaborators. Efficacy and safety of more intensive lowering of LDL cholesterol: a meta-analysis of data from 170,000 participants in 26 randomised trials. *Lancet* 2010;376:1670–1681
92. Cannon CP, Blazing MA, Giugliano RP, et al.; IMPROVE-IT Investigators. Ezetimibe added to statin therapy after acute coronary syndromes. *N Engl J Med* 2015;372:2387–2397
93. De Ferranti SD, de Boer IH, Fonseca V, et al. Type 1 diabetes mellitus and cardiovascular disease: a scientific statement from the American Heart Association and American Diabetes Association. *Circulation* 2014;130:1110–1130
94. Cannon CP, Braunwald E, McCabe CH, et al.; Pravastatin or Atorvastatin Evaluation and Infection Therapy-Thrombolysis in Myocardial Infarction 22 Investigators. Intensive versus moderate lipid lowering with statins after acute coronary syndromes. *N Engl J Med* 2004;350:1495–1504
95. Sabatine MS, Giugliano RP, Keech AC, et al.; FOURIER Steering Committee and Investigators. Evolocumab and clinical outcomes in patients with cardiovascular disease. *N Engl J Med* 2017;376:1713–1722
96. Giugliano RP, Cannon CP, Blazing MA, et al.; IMPROVE-IT (Improved Reduction of Outcomes: Vytorin Efficacy International Trial) Investigators. Benefit of adding ezetimibe to statin therapy on cardiovascular outcomes and safety in patients with versus without diabetes mellitus: results from IMPROVE-IT (Improved Reduction of Outcomes: Vytorin Efficacy International Trial). *Circulation* 2018;137:1571–1582
97. Das SR, Everett BM, Birtcher KK, et al. 2018 ACC expert consensus decision pathway on novel therapies for cardiovascular risk reduction in patients with type 2 diabetes and atherosclerotic cardiovascular disease: a report of the American

- College of Cardiology Task Force on Expert Consensus Decision Pathways. *J Am Coll Cardiol* 2018;72:3200–3223
98. Moriarty PM, Jacobson TA, Bruckert E, et al. Efficacy and safety of alirocumab, a monoclonal antibody to PCSK9, in statin-intolerant patients: design and rationale of ODYSSEY ALTERNATIVE, a randomized phase 3 trial. *J Clin Lipidol* 2014;8:554–561
99. Zhang X-L, Zhu Q-Q, Zhu L, et al. Safety and efficacy of anti-PCSK9 antibodies: a meta-analysis of 25 randomized, controlled trials. *BMC Med* 2015;13:123
100. Sabatine MS, Leiter LA, Wiviott SD, et al. Cardiovascular safety and efficacy of the PCSK9 inhibitor evolocumab in patients with and without diabetes and the effect of evolocumab on glycaemia and risk of new-onset diabetes: a pre-specified analysis of the FOURIER randomised controlled trial. *Lancet Diabetes Endocrinol* 2017;5:941–950
101. Berglund L, Brunzell JD, Goldberg AC, et al.; Endocrine Society. Evaluation and treatment of hypertriglyceridemia: an Endocrine Society clinical practice guideline. *J Clin Endocrinol Metab* 2012;97:2969–2989
102. Bhatt DL, Steg PG, Miller M, et al.; REDUCE-IT Investigators. Cardiovascular risk reduction with icosapent ethyl for hypertriglyceridemia. *N Engl J Med* 2019;380:11–22
103. Singh IM, Shishehbor MH, Ansell BJ. High-density lipoprotein as a therapeutic target: a systematic review. *JAMA* 2007;298:786–798
104. Keech A, Simes RJ, Barter P, et al.; FIELD study investigators. Effects of long-term fenofibrate therapy on cardiovascular events in 9795 people with type 2 diabetes mellitus (the FIELD study): randomised controlled trial. *Lancet* 2005;366:1849–1861
105. Jones PH, Davidson MH. Reporting rate of rhabdomyolysis with fenofibrate + statin versus gemfibrozil + any statin. *Am J Cardiol* 2005;95:120–122
106. Ginsberg HN, Elam MB, Lovato LC, et al.; ACCORD Study Group. Effects of combination lipid therapy in type 2 diabetes mellitus. *N Engl J Med* 2010;362:1563–1574
107. Kowa Research Institute, Inc. Pemaifibrate to Reduce Cardiovascular Outcomes by Reducing Triglycerides in Patients With Diabetes (PROMINENT) In: ClinicalTrials.gov [Internet]. Bethesda, MD, National Library of Medicine. NLM Identifier: NCT03071692. Accessed 8 October 2018. Available from <https://clinicaltrials.gov/ct2/show/NCT03071692>
108. Boden WE, Probstfield JL, Anderson T, et al.; AIM-HIGH Investigators. Niacin in patients with low HDL cholesterol levels receiving intensive statin therapy. *N Engl J Med* 2011;365:2255–2267
109. Landray MJ, Haynes R, Hopewell JC, et al.; HPS2-THRIVE Collaborative Group. Effects of extended-release niacin with laropiprant in high-risk patients. *N Engl J Med* 2014;371:203–212
110. Rajpathak SN, Kumbhani DJ, Crandall J, Barzilai N, Alderman M, Ridker PM. Statin therapy and risk of developing type 2 diabetes: a meta-analysis. *Diabetes Care* 2009;32:1924–1929
111. Sattar N, Preiss D, Murray HM, et al. Statins and risk of incident diabetes: a collaborative meta-analysis of randomised statin trials. *Lancet* 2010;375:735–742
112. Ridker PM, Pradhan A, MacFadyen JG, Libby P, Glynn RJ. Cardiovascular benefits and diabetes risks of statin therapy in primary prevention: an analysis from the JUPITER trial. *Lancet* 2012;380:565–571
113. Mach F, Ray KK, Wiklund O, et al.; European Atherosclerosis Society Consensus Panel. Adverse effects of statin therapy: perception vs. the evidence – focus on glucose homeostasis, cognitive, renal and hepatic function, haemorrhagic stroke and cataract. *Eur Heart J* 2018;39:2526–2539
114. Heart Protection Study Collaborative Group. MRC/BHF Heart Protection Study of cholesterol lowering with simvastatin in 20,536 high-risk individuals: a randomised placebo-controlled trial. *Lancet* 2002;360:7–22
115. Shepherd J, Blauw GJ, Murphy MB, et al.; PROSPER study group. PROspective Study of Pravastatin in the Elderly at Risk. Pravastatin in elderly individuals at risk of vascular disease (PROSPER): a randomised controlled trial. *Lancet* 2002;360:1623–1630
116. Trompet S, van Vliet P, de Craen AJM, et al. Pravastatin and cognitive function in the elderly. Results of the PROSPER study. *J Neurol* 2010;257:85–90
117. Yusuf S, Bosch J, Dagenais G, et al.; HOPE-3 Investigators. Cholesterol lowering in intermediate-risk persons without cardiovascular disease. *N Engl J Med* 2016;374:2021–2031
118. Giugliano RP, Mach F, Zavitz K, et al.; EBBINGHAUS Investigators. Cognitive function in a randomized trial of evolocumab. *N Engl J Med* 2017;377:633–643
119. Richardson K, Schoen M, French B, et al. Statins and cognitive function: a systematic review. *Ann Intern Med* 2013;159:688–697
120. Baigent C, Blackwell L, Collins R, et al.; Antithrombotic Trialists' (ATT) Collaboration. Aspirin in the primary and secondary prevention of vascular disease: collaborative meta-analysis of individual participant data from randomised trials. *Lancet* 2009;373:1849–1860
121. Perk J, De Backer G, Gohlke H, et al.; European Association for Cardiovascular Prevention & Rehabilitation (EACPR); ESC Committee for Practice Guidelines (CPG). European Guidelines on cardiovascular disease prevention in clinical practice (version 2012). The Fifth Joint Task Force of the European Society of Cardiology and Other Societies on Cardiovascular Disease Prevention in Clinical Practice (constituted by representatives of nine societies and by invited experts). *Eur Heart J* 2012;33:1635–1701
122. Belch J, MacCuish A, Campbell I, et al. The prevention of progression of arterial disease and diabetes (POPADAD) trial: factorial randomised placebo controlled trial of aspirin and antioxidants in patients with diabetes and asymptomatic peripheral arterial disease. *BMJ* 2008;337:a1840
123. Zhang C, Sun A, Zhang P, et al. Aspirin for primary prevention of cardiovascular events in patients with diabetes: a meta-analysis. *Diabetes Res Clin Pract* 2010;87:211–218
124. De Berardis G, Sacco M, Strippoli GFM, et al. Aspirin for primary prevention of cardiovascular events in people with diabetes: meta-analysis of randomised controlled trials. *BMJ* 2009;339:b4531
125. ASCEND Study Collaborative Group. Effects of aspirin for primary prevention in persons with diabetes mellitus. *N Engl J Med* 2018;379:1529–1539
126. Gaziano JM, Brotons C, Coppolecchia R, et al.; ARRIVE Executive Committee. Use of aspirin to reduce risk of initial vascular events in patients at moderate risk of cardiovascular disease (ARRIVE): a randomised, double-blind, placebo-controlled trial. *Lancet* 2018;392:1036–1046
127. McNeil JJ, Wolfe R, Woods RL, et al.; ASPREE Investigator Group. Effect of aspirin on cardiovascular events and bleeding in the healthy elderly. *N Engl J Med* 2018;379:1509–1518
128. Pignone M, Earnshaw S, Tice JA, Pletcher MJ. Aspirin, statins, or both drugs for the primary prevention of coronary heart disease events in men: a cost-utility analysis. *Ann Intern Med* 2006;144:326–336
129. Huxley RR, Peters SAE, Mishra GD, Woodward M. Risk of all-cause mortality and vascular events in women versus men with type 1 diabetes: a systematic review and meta-analysis. *Lancet Diabetes Endocrinol* 2015;3:198–206
130. Peters SAE, Huxley RR, Woodward M. Diabetes as risk factor for incident coronary heart disease in women compared with men: a systematic review and meta-analysis of 64 cohorts including 858,507 individuals and 28,203 coronary events. *Diabetologia* 2014;57:1542–1551
131. Kalyani RR, Lazo M, Ouyang P, et al. Sex differences in diabetes and risk of incident coronary artery disease in healthy young and middle-aged adults. *Diabetes Care* 2014;37:830–838
132. Peters SAE, Huxley RR, Woodward M. Diabetes as a risk factor for stroke in women compared with men: a systematic review and meta-analysis of 64 cohorts, including 775,385 individuals and 12,539 strokes. *Lancet* 2014;383:1973–1980
133. Miedema MD, Duprez DA, Misialek JR, et al. Use of coronary artery calcium testing to guide aspirin utilization for primary prevention: estimates from the multi-ethnic study of atherosclerosis. *Circ Cardiovasc Qual Outcomes* 2014;7:453–460
134. Dimitriu-Leen AC, Scholte AJHA, van Rosendaal AR, et al. Value of coronary computed tomography angiography in tailoring aspirin therapy for primary prevention of atherosclerotic events in patients at high risk with diabetes mellitus. *Am J Cardiol* 2016;117:887–893
135. Mora S, Ames JM, Manson JE. Low-dose aspirin in the primary prevention of cardiovascular disease: shared decision making in clinical practice. *JAMA* 2016;316:709–710
136. Campbell CL, Smyth S, Montalescot G, Steinhilb SR. Aspirin dose for the prevention of cardiovascular disease: a systematic review. *JAMA* 2007;297:2018–2024
137. Davì G, Patrono C. Platelet activation and atherothrombosis. *N Engl J Med* 2007;357:2482–2494
138. Larsen SB, Grove EL, Neergaard-Petersen S, Würtz M, Hvas A-M, Kristensen SD. Determinants of reduced antiplatelet effect of aspirin in patients with stable coronary artery disease. *PLoS One* 2015;10:e0126767

139. Zaccardi F, Rizzi A, Petrucci G, et al. In vivo platelet activation and aspirin responsiveness in type 1 diabetes. *Diabetes* 2016;65:503–509
140. Bethel MA, Harrison P, Sourij H, et al. Randomized controlled trial comparing impact on platelet reactivity of twice-daily with once-daily aspirin in people with type 2 diabetes. *Diabet Med* 2016;33:224–230
141. Rothwell PM, Cook NR, Gaziano JM, et al. Effects of aspirin on risks of vascular events and cancer according to bodyweight and dose: analysis of individual patient data from randomised trials. *Lancet* 2018;392:387–399
142. Vandvik PO, Lincoff AM, Gore JM, et al. Primary and secondary prevention of cardiovascular disease: Antithrombotic Therapy and Prevention of Thrombosis, 9th ed: American College of Chest Physicians Evidence-Based Clinical Practice Guidelines [published correction appears in *Chest* 2012;141:1129]. *Chest* 2012;141(Suppl.):e6375–e668S
143. Bhatt DL, Bonaca MP, Bansilal S, et al. Reduction in ischemic events with ticagrelor in diabetic patients with prior myocardial infarction in PEGASUS-TIMI 54. *J Am Coll Cardiol* 2016;67:2732–2740
144. Bax JJ, Young LH, Frye RL, Bonow RO, Steinberg HO, Barrett EJ, ADA. Screening for coronary artery disease in patients with diabetes. *Diabetes Care* 2007;30:2729–2736
145. Boden WE, O'Rourke RA, Teo KK, et al.; COURAGE Trial Research Group. Optimal medical therapy with or without PCI for stable coronary disease. *N Engl J Med* 2007;356:1503–1516
146. BARI 2D Study Group, Frye RL, August P, et al. A randomized trial of therapies for type 2 diabetes and coronary artery disease. *N Engl J Med* 2009;360:2503–2015
147. Wackers FJT, Chyun DA, Young LH, et al.; Detection of Ischemia in Asymptomatic Diabetics (DIAD) Investigators. Resolution of asymptomatic myocardial ischemia in patients with type 2 diabetes in the Detection of Ischemia in Asymptomatic Diabetics (DIAD) study. *Diabetes Care* 2007;30:2892–2898
148. Elkeles RS, Godsland IF, Feher MD, et al.; PREDICT Study Group. Coronary calcium measurement improves prediction of cardiovascular events in asymptomatic patients with type 2 diabetes: the PREDICT study. *Eur Heart J* 2008;29:2244–2251
149. Raggi P, Shaw LJ, Berman DS, Callister TQ. Prognostic value of coronary artery calcium screening in subjects with and without diabetes. *J Am Coll Cardiol* 2004;43:1663–1669
150. Anand DV, Lim E, Hopkins D, et al. Risk stratification in uncomplicated type 2 diabetes: prospective evaluation of the combined use of coronary artery calcium imaging and selective myocardial perfusion scintigraphy. *Eur Heart J* 2006;27:713–721
151. Young LH, Wackers FJT, Chyun DA, et al.; DIAD Investigators. Cardiac outcomes after screening for asymptomatic coronary artery disease in patients with type 2 diabetes: the DIAD study: a randomized controlled trial. *JAMA* 2009;301:1547–1555
152. Wackers FJT, Young LH, Inzucchi SE, et al.; Detection of Ischemia in Asymptomatic Diabetics Investigators. Detection of silent myocardial ischemia in asymptomatic diabetic subjects: the DIAD study. *Diabetes Care* 2004;27:1954–1961
153. Scognamiglio R, Negut C, Ramondo A, Tiengo A, Avogaro A. Detection of coronary artery disease in asymptomatic patients with type 2 diabetes mellitus. *J Am Coll Cardiol* 2006;47:65–71
154. Hadamitzky M, Hein F, Meyer T, et al. Prognostic value of coronary computed tomographic angiography in diabetic patients without known coronary artery disease. *Diabetes Care* 2010;33:1358–1363
155. Choi E-K, Chun EJ, Choi S-I, et al. Assessment of subclinical coronary atherosclerosis in asymptomatic patients with type 2 diabetes mellitus with single photon emission computed tomography and coronary computed tomography angiography. *Am J Cardiol* 2009;104:890–896
156. Malik S, Zhao Y, Budoff M, et al. Coronary artery calcium score for long-term risk classification in individuals with type 2 diabetes and metabolic syndrome from the multi-ethnic study of atherosclerosis. *JAMA Cardiol* 2017;2:1332–1340
157. Wing RR, Bolin P, Brancati FL, et al.; Look AHEAD Research Group. Cardiovascular effects of intensive lifestyle intervention in type 2 diabetes. *N Engl J Med* 2013;369:145–154
158. Braunwald E, Domanski MJ, Fowler SE, et al.; PEACE Trial Investigators. Angiotensin-converting-enzyme inhibition in stable coronary artery disease. *N Engl J Med* 2004;351:2058–2068
159. Telmisartan Randomised Assessment Study in ACE Intolerant subjects with cardiovascular Disease (TRANSCEND) Investigators, Yusuf S, Teo K, et al. Effects of the angiotensin-receptor blocker telmisartan on cardiovascular events in high-risk patients intolerant to angiotensin-converting enzyme inhibitors: a randomised controlled trial. *Lancet* 2008;372:1174–1183
160. Kezerashvili A, Marzo K, De Leon J. Beta blocker use after acute myocardial infarction in the patient with normal systolic function: when is it “ok” to discontinue? *Curr Cardiol Rev* 2012;8:77–84
161. U.S. Food and Drug Administration. Guidance for industry. Diabetes mellitus—evaluating cardiovascular risk in new antidiabetic therapies to treat type 2 diabetes. Silver Spring, MD, 2008. Accessed 3 November 2017. Available from <http://www.fda.gov/downloads/Drugs/GuidanceComplianceRegulatoryInformation/Guidances/ucm071627.pdf>
162. Perkovic V, Jardine MJ, Neal B, et al. Canagliflozin and renal outcomes in type 2 diabetes and nephropathy. *N Engl J Med* 2019;380:2295–2306
163. Neal B, Perkovic V, Matthews DR, et al.; CANVAS-R Trial Collaborative Group. Rationale, design and baseline characteristics of the CANagliflozin cardiovascular Assessment Study-Renal (CANVAS-R): a randomized, placebo-controlled trial. *Diabetes Obes Metab* 2017;19:387–393
164. Wiviott SD, Raz I, Bonaca MP, Mosenzon O, Kato ET, Cahn A, et al. Dapagliflozin and cardiovascular outcomes in type 2 diabetes. *N Engl J Med* 2019;380:347–357
165. Marso SP, Daniels GH, Brown-Frandsen K, et al.; LEADER Steering Committee; LEADER Trial Investigators. Liraglutide and cardiovascular outcomes in type 2 diabetes. *N Engl J Med* 2016;375:311–322
166. Marso SP, Bain SC, Consoli A, et al.; SUSTAIN-6 Investigators. Semaglutide and cardiovascular outcomes in patients with type 2 diabetes. *N Engl J Med* 2016;375:1834–1844
167. Husain M, Birkenfeld AL, Donsmark M, et al. Oral semaglutide and cardiovascular outcomes in patients with type 2 diabetes. *N Engl J Med* 2019;381:841–851
168. Hernandez AF, Green JB, Janmohamed S, et al. Albiglutide and cardiovascular outcomes in patients with type 2 diabetes and cardiovascular disease (Harmony Outcomes): a double-blind, randomised placebo-controlled trial. *Lancet* 2018;392:1519–1529
169. Gerstein HC, Colhoun HM, Dagenais GR, et al.; REWIND Investigators. Dulaglutide and cardiovascular outcomes in type 2 diabetes (REWIND): a double-blind, randomised placebo-controlled trial. *Lancet* 2019;394:121–130
170. Pfeffer MA, Claggett B, Diaz R, et al.; ELIXA Investigators. Lixisenatide in patients with type 2 diabetes and acute coronary syndrome. *N Engl J Med* 2015;373:2247–2257
171. Holman RR, Bethel MA, Mentz RJ, et al.; EXSCEL Study Group. Effects of once-weekly exenatide on cardiovascular outcomes in type 2 diabetes. *N Engl J Med* 2017;377:1228–1239
172. Zelniker TA, Wiviott SD, Raz I, et al. Comparison of the effects of glucagon-like peptide receptor agonists and sodium-glucose cotransporter 2 inhibitors for prevention of major adverse cardiovascular and renal outcomes in type 2 diabetes mellitus. *Circulation* 2019;139:2022–2031
173. Zelniker TA, Wiviott SD, Raz I, et al. SGLT2 inhibitors for primary and secondary prevention of cardiovascular and renal outcomes in type 2 diabetes: a systematic review and meta-analysis of cardiovascular outcome trials. *Lancet* 2019;393:31–39
174. Kannel WB, Hjortland M, Castelli WP. Role of diabetes in congestive heart failure: the Framingham study. *Am J Cardiol* 1974;34:29–34
175. Dormandy JA, Charbonnel B, Eckland DJA, et al.; PROactive Investigators. Secondary prevention of macrovascular events in patients with type 2 diabetes in the PROactive Study (PROspective pioglitAzone Clinical Trial In macroVascular Events): a randomised controlled trial. *Lancet* 2005;366:1279–1289
176. Singh S, Loke YK, Furberg CD. Long-term risk of cardiovascular events with rosiglitazone: a meta-analysis. *JAMA* 2007;298:1189–1195
177. Lincoff AM, Wolski K, Nicholls SJ, Nissen SE. Pioglitazone and risk of cardiovascular events in patients with type 2 diabetes mellitus: a meta-analysis of randomized trials. *JAMA* 2007;298:1180–1188
178. Inzucchi SE, Masouadi FA, McGuire DK. Metformin in heart failure. *Diabetes Care* 2007;30:e129–e129
179. Eurich DT, Majumdar SR, McAlister FA, Tsuyuki RT, Johnson JA. Improved clinical outcomes associated with metformin in patients with diabetes and heart failure. *Diabetes Care* 2005;28:2345–2351
180. U.S. Food and Drug Administration. FDA drug safety communication: FDA revises warnings regarding use of the diabetes medicine metformin in certain patients with reduced kidney function, 2016. Accessed 14 October 2016. Available from <http://www.fda.gov/Drugs/DrugSafety/ucm493244.htm>

181. Scirica BM, Bhatt DL, Braunwald E, et al.; SAVOR-TIMI 53 Steering Committee and Investigators. Saxagliptin and cardiovascular outcomes in patients with type 2 diabetes mellitus. *N Engl J Med* 2013;369:1317–1326
182. Zannad F, Cannon CP, Cushman WC, et al.; EXAMINE Investigators. Heart failure and mortality outcomes in patients with type 2 diabetes taking alogliptin versus placebo in EXAMINE: a multicentre, randomised, double-blind trial. *Lancet* 2015;385:2067–2076
183. Green JB, Bethel MA, Armstrong PW, et al.; TECOS Study Group. Effect of sitagliptin on cardiovascular outcomes in type 2 diabetes. *N Engl J Med* 2015;373:232–242
184. Rosenstock J, Perkovic V, Johansen OE, et al. Effect of linagliptin vs placebo on major cardiovascular events in adults with type 2 diabetes and high cardiovascular and renal risk: the CARMELINA randomized clinical trial. *JAMA* 2019;321:69–79
185. Hansson L, Zanchetti A, Carruthers SG, et al.; HOT Study Group. Effects of intensive blood-pressure lowering and low-dose aspirin in patients with hypertension: principal results of the Hypertension Optimal Treatment (HOT) randomised trial. *Lancet* 1998;351:1755–1762
186. White WB, Cannon CP, Heller SR, et al.; EXAMINE Investigators. Alogliptin after acute coronary syndrome in patients with type 2 diabetes. *N Engl J Med* 2013;369:1327–1335
187. Rosenstock J, Perkovic V, Alexander JH, et al. Rationale, design, and baseline characteristics of the CArdiovascular safety and Renal Microvascular outcomE study with LINagliptin (CARMELINA): a randomized, double-blind, placebo-controlled clinical trial in patients with type 2 diabetes and high cardio-renal risk. *Cardiovasc Diabetol* 2018;17:39
188. Cefalu WT, Kaul S, Gerstein HC, et al. Cardiovascular outcomes trials in type 2 diabetes: where do we go from here? Reflections from a *Diabetes Care* Editors' Expert Forum. *Diabetes Care* 2018;41:14–31