

Obesity, Neuroinflammation, and Reproductive Function

Nancy M. Lainez¹ and Djurdjica Coss¹

¹Division of Biomedical Sciences, School of Medicine, University of California, Riverside, Riverside, California 92521

ORCID numbers: [0000-0003-0692-1612](https://orcid.org/0000-0003-0692-1612) (D. Coss).

The increasing occurrence of obesity has become a significant public health concern. Individuals with obesity have higher prevalence of heart disease, stroke, osteoarthritis, diabetes, and reproductive disorders. Reproductive problems include menstrual irregularities, pregnancy complications, and infertility due to anovulation, in women, and lower testosterone and diminished sperm count, in men. In particular, women with obesity have reduced levels of both gonadotropin hormones, and, in obese men, lower testosterone is accompanied by diminished LH. Taken together, these findings indicate central dysregulation of the hypothalamic–pituitary–gonadal axis, specifically at the level of the GnRH neuron function, which is the final brain output for the regulation of reproduction. Obesity is a state of hyperinsulinemia, hyperlipidemia, hyperleptinemia, and chronic inflammation. Herein, we review recent advances in our understanding of how these metabolic and immune changes affect hypothalamic function and regulation of GnRH neurons. In the latter part, we focus on neuroinflammation as a major consequence of obesity and discuss findings that reveal that GnRH neurons are uniquely positioned to respond to inflammatory changes. (*Endocrinology* 160: 2719–2736, 2019)

Proper integration of metabolic stimuli with the hypothalamic–pituitary–gonadal (HPG) axis is critical for normal pubertal development and maintenance of reproductive function in adults. GnRH from the hypothalamus is the final brain signal that regulates reproduction (1). GnRH is secreted by a unique population of ~1000 to 2000 neurons that are scattered in the preoptic area, septum, and anterior hypothalamus in rodents, or periventricular area and mediobasal hypothalamus in primates (2, 3). They are unipolar or bipolar neurons that send long processes to the median eminence (ME). Because GnRH neurons are scattered, pubertal onset and synchronization of GnRH release in adulthood are regulated by upstream neurons, most notably those that produce kisspeptin (encoded by *Kiss1*) (4–7). GnRH is secreted in the pulsatile manner into the hypophyseal portal circulation in the ME. Upon binding to its receptor, GnRH stimulates gonadotrope cells in the

anterior pituitary to synthesize and secrete LH and FSH (8, 9). LH and FSH regulate steroidogenesis and gametogenesis in the gonads, and gonadal steroids in turn provide feedback to the hypothalamus via kisspeptin.

Both extremes of body weight are not conducive for optimal HPG axis function. A minimum ratio of fat to lean mass is necessary for menarche and for the maintenance of female reproductive ability (10). Food intake and energy expenditure are regulated by several brain areas, primarily brain stem and hypothalamus, which receive short-term signals from the gastrointestinal tract and long-term signals from body energy stores, mainly adipose tissue (11). Hypothalamic neurons involved in feeding and their interaction with reproductive circuitry are discussed below. Adipose tissue serves as an endocrine organ, and it is thought that increased secretion of leptin with increased adiposity is necessary for the initiation of puberty (12). Malnutrition or limited adipose

ISSN Online 1945-7170

Copyright © 2019 Endocrine Society

Received 2 July 2019. Accepted 4 September 2019.

First Published Online 12 September 2019

Abbreviations: AgRP, agouti-related protein; ARC, arcuate nucleus; BBB, blood–brain barrier; BMI, body mass index; CNS, central nervous system; DIO, diet-induced obesity; GABA, γ -aminobutyric acid; GFP, green fluorescent protein; HFD, high-fat diet; HPG, hypothalamic–pituitary–gonadal; ICV, intracerebroventricular; LIF, leukemia inhibitory factor; LPS, lipopolysaccharide; ME, median eminence; NPY, neuropeptide Y; OVLT, organum vasculosum laminae terminalis; POMC, proopiomelanocortin; β -END, β -endorphin.

tissue in athletes causes lower levels of both gonadotropin hormones and reduced frequency of LH secretion, implying central regulation of the reproductive axis by metabolic signals (13). Because metabolic influences on pubertal development have been extensively reviewed (14–19), in this review we concentrate on the negative effects of obesity on reproduction in adults.

Negative Effects of Obesity on Reproductive Function

During the past 30 years the prevalence of obesity has increased steadily worldwide (20). Currently in the United States, >30% of men and women are classified as obese, with a body mass index (BMI) of ≥ 30 kg/m² (21). In recent years, rates of obesity have disproportionately escalated in children and young individuals, which may lead to long-term consequences in a number of homeostatic processes, including reproductive function. According to the World Health Organization, obesity is linked to an increased risk of cardiovascular disease, cerebral ischemia, type 2 diabetes, and reproductive disorders for both men and women (22, 23).

Men with obesity exhibit reduced levels of LH (24), testosterone, and SHBG (25, 26). Obesity-associated reduction in testosterone is accompanied by reduced levels of LH, whereas age-related reduction in testosterone is correlated with increased LH (25), indicating central rather than gonadal dysregulation in obesity. Sperm number and quality are negatively impacted by increased adiposity as well (23, 27, 28). Moreover, increased BMI is associated with lower sperm concentration and fewer total spermatozoa (29). Meta-analysis of 21 reports and a total of 13,000 men associated obesity with increased prevalence of azoospermia and oligozoospermia (23). Fertilization rates during *in vitro* fertilization are reduced when the male partner is obese (30). Studies in animal models correlate with clinical findings in humans. Obese Zucker rats and C57BL/6 mice demonstrated decreased sperm production and increased sperm DNA fragmentation (28, 31). Our recent study demonstrated lower LH, testosterone, and sperm count in obese C57BL/6J mice (Fig. 1) (32). Decreased testosterone, accompanied by a reduction in LH, implicates central regulatory mechanisms at the neuroendocrine levels.

Similarly, women with obesity are more likely to have reduced fertility characterized by reduced levels of LH (22, 33–35). Obesity-related problems in women include early onset of puberty, menstrual irregularities, in particular a longer follicular phase indicating ovulatory problems, pregnancy complications, infertility, and spontaneous abortions (36–38). Studies in animal models also corroborate these findings. Female rhesus macaques placed on a high-fat diet (HFD) presented with reduced LH pulse

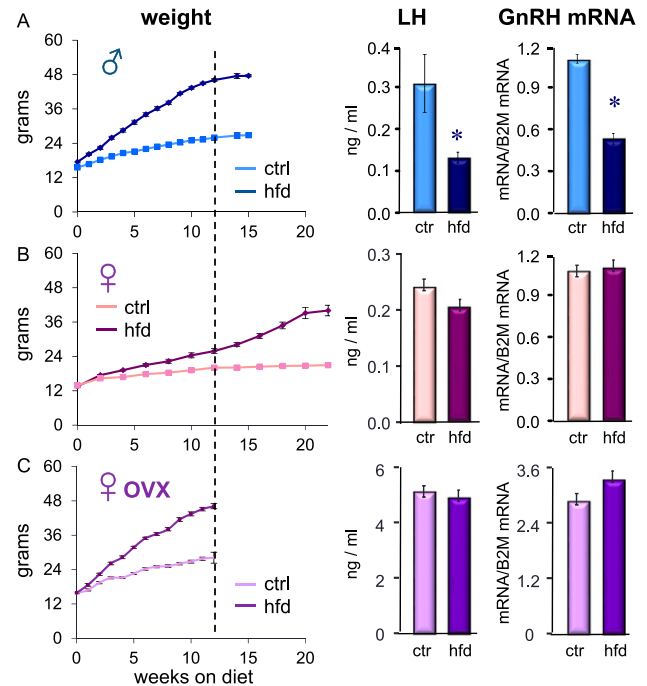


Figure 1. Ovarian hormones are protective from diet-induced obesity but not necessary for protection from hormonal changes in females. (A and B) Ten C57BL/6J mice per group were placed on control (ctr; 10 kcal % fat, Research Diet) or a high-fat diet (hfd; 60 kcal % fat, Research Diet) with the same sucrose levels, at 4 wk of age. Their weights were recorded twice a week [(A) males; (B) females]. (C) Female mice were ovariectomized (OVX) at weaning and 1 wk later, at 4 wk of age, were placed on experimental diets. After 12 wk on their respective diets, males and OVX females were euthanized, whereas unmodified females were euthanized after 20 wk on diets, when the females on an hfd reached the same weight gain as males and OVX females, because the 12-wk diet showed lack of any differences. Serum LH was measured using ultrasensitive assay by UVA Ligand Core and GnRH mRNA in the hypothalamus by quantitative RT-PCR. * $P < 0.05$, between control and hfd. Reported in Lainez *et al.* (32).

amplitude (39). Female mice fed an HFD exhibit longer estrous cycles (32, 40, 41). Because women with obesity have lower levels of gonadotropin hormones (42), hypothalamus and pituitary are likely primary sites of obesity-mediated impairment of the reproductive axis.

Differences in Animal Models and Sex

Significant strain differences in response to an HFD were observed in laboratory mice. A/J, FVB/NJ, and BALB/cJ strains are resistant to diet-induced obesity (DIO), whereas DBA/2J and C57BL/6J strains gain weight (43–45). The C57BL/6J mouse is a particularly faithful model of the human metabolic syndrome because it develops obesity, hyperinsulinemia, hyperglycemia, and hypertension when allowed *ad libitum* access to an HFD (46, 47), and it is used most often for these studies. Owing to the mutation in the nicotinamide nucleotide transhydrogenase (*Nnt*) gene, the C57BL/6J mouse also exhibits slightly worse metabolic

parameters in response to long HFD exposure than does the related C57BL/6N substrain (48–50). Similar differences, albeit less pronounced, exist between rat strains, with Wistar rats having a larger pathophysiological response to obesity than do Sprague-Dawley or Fischer 344 strains (51–54). Keeping these differences in mind is critical when evaluating and comparing studies in the literature. Owing to availability of genetic modifications, mice were used in a larger number of studies in recent years. It is also important to critically assess studies in mice containing single gene alterations, because obesity is a polygenic trait, with 244 genes cited so far for obesity-related phenotypes in mice and 253 quantitative trait loci in humans (55).

Sex differences in response to DIO are also profound (56). Based on the studies in animal models and observations in women who are menopausal, it was hypothesized that a lack of estrogen increased adiposity, whereas estrogen replacement diminished it. In accordance, estrogen receptor α knockout mice (57) and aromatase knockout mice (58) exhibit increased obesity. Women treated with aromatase inhibitors have higher adiposity (59). An increase in adiposity following ovariectomy and removal of ovarian estrogen was observed in rodents (60, 61) and in monkeys (62). However, in DBA and C57BL/6J mouse strains, both of which are prone to DIO, sex differences vary. Females of the DBA strain are prone to DIO, although they have estrogen (45). Alternatively, C57BL/6J females are resistant to DIO, whereas males are susceptible. A recent study from our laboratory concurred that ovarian estrogen is protective from DIO in C57BL/6J mice (Fig. 1). However, we further demonstrated that ovarian estrogen is not necessary for female protection from hormonal and immunological changes that obese males exhibit (32). Because it was assumed that hormonal changes would follow weight gain in females after ovariectomy, obesity-mediated endocrine changes had not been compared in unmodified and ovariectomized females before. We demonstrated that obese females are protected from hormonal and immune changes regardless of the gonadal status (32). Whether protection in females is provided by extraovarian estrogen (63, 64) or by other sex differences in neuroendocrine axes, metabolic rates, immune system, or fat deposition (61, 65, 66) remains to be determined.

Crosstalk Between Reproductive and Feeding Circuitry in the Hypothalamus

Metabolic cues from the periphery are integrated primarily by anorexigenic proopiomelanocortin (POMC) neurons and orexigenic neuropeptide Y (NPY) neurons located in the arcuate nucleus (ARC) of the mediobasal hypothalamus, and by neurons that synthesize orexin in the lateral hypothalamus (67). These neurons regulate food intake by sensing levels of leptin and insulin, and it is proposed that they convey

metabolic status to neurons involved in reproduction, namely GnRH and/or kisspeptin neurons that regulate GnRH neuron pulsatility. Although studies have examined the involvement of neuropeptides produced by POMC, NPY, and orexin neurons in communicating metabolic status to the reproductive axis, results remain inconclusive. The role of these neurons have been reviewed in more detail elsewhere (68–73), and we will briefly summarize the findings.

POMC

POMC is an anorexigenic precursor expressed in neurons in the ARC that coexpress cocaine and amphetamine-regulated transcript (CART). Activation of POMC neurons by leptin reduces food intake and increases energy expenditure (67). Processing of POMC precursor creates anorexigenic α -MSH melanocortin and orexigenic β -endorphin (β -END) opioid peptide. The receptors for melanocortins have been classified into five subtypes, MC1R, MC2R, MC3R, MC4R, and MC5R, whereas β -END acts on μ - and κ -receptors (74). Of the five melanocortin receptors, MC3R and MC4R are expressed in the brain, regulating energy expenditure and satiety, respectively (75). Although POMC neurons are considered primary brain targets of metabolic signals from the periphery via leptin, mice lacking leptin receptor specifically in POMC neurons are only mildly obese, compared with the whole-body leptin receptor knockouts (76). POMC neurons make direct contact with GnRH neurons in the rat brain (77), and POMC products, α -MSH, and β -END have differential effects on reproduction. Whereas α -MSH activates most GnRH neurons (78) and stimulates LH secretion (12), β -END inhibits a small percentage of GnRH neurons (78) and reduces LH secretion (79). Single-cell RT-PCR demonstrated that most GnRH neurons express MC4R and that treatment with an agonist, MTHI, activates GnRH neurons (80). Because kisspeptin neurons express MC4R as well (81), kisspeptin neurons may convey an α -MSH response and activate GnRH neurons, in particular during initiation of puberty (12). However, regulation of either GnRH or kisspeptin neurons by POMC in adults remains to be explored in detail, and it is unknown whether normal interaction is altered in obesity.

NPY

NPY, an orexigenic neuropeptide that signals through G-protein-coupled receptors Y1 to Y6, is synthesized by neurons in the ARC that are activated during states of low energy, such as lactation or starvation. Ghrelin, secreted by the stomach and intestine, activates NPY neurons to promote food intake. NPY neurons, which also synthesize γ -aminobutyric acid (GABA) (82), in turn inhibit POMC neurons (83, 84) through the Y1 receptor, as well as via GABA neurotransmission (83). Surprisingly, NPY knockout

mice maintain body weight and exhibit similar food consumption as do control mice (85), as do genetically modified mice that overexpress NPY (*Npy^{tet/tet}*) (86). Agouti-related protein (AgRP) that is coexpressed in NPY neurons is also not required for the regulation of energy expenditure or body weight (87). Ablation of NPY/AgRP neurons, alternatively, causes rapid starvation, showing that the neurons, if not neuropeptides themselves, are necessary for weight maintenance and energy homeostasis (88). This may point to the necessary role for GABA neurotransmission. It is still not clear whether and how NPY neurons regulate reproductive circuitry. NPY/AgRP neurons from the ARC make contacts with most GnRH neurons (89–91). In a study using ovariectomized rhesus macaques, intracerebroventricular (ICV) administration of NPY inhibited LH pulses, whereas local administration of NPY in the ME stimulated the release of GnRH (92). In C57BL/6 mice and rats, chronic NPY treatment resulted in diminished LH and hypogonadism, whereas acute NPY administration into the ventricle stimulated LH release in steroid-primed ovariectomized rats (93, 94). In a recent elegant study using optogenetics and chemogenetics, acute stimulation of ARC GABA fibers, ~30% of which express NPY (82), in the proximity to GnRH neurons resulted in increased LH secretion in male and female mice, whereas chronic activation elevated LH pulse frequency, increased estrous cycle length, decreased corpora lutea number, and raised testosterone concentration in females (95). Central infusion of AgRP into the third ventricle resulted in reduction of LH pulse frequency in ovariectomized rhesus monkeys (96). Brain slices from adult female GnRH–green fluorescent protein (GFP) mice used in loose patch recording experiments and treated with AgRP resulted in reduced activity of 10% of GnRH neurons and stimulation of 25% of GnRH neurons (78). Use of NPY receptor agonists also had varying effects, including an increased firing rate of 50% GnRH neurons and a reduced firing of 46% GnRH neurons (78). Specifically, only receptors Y1 and Y5 are expressed on GnRH terminals and cell bodies, respectively (90, 91). However, in one study, a Y5 receptor agonist, hPP, had no effect on GnRH neuron excitability (78), although others have reported that infusions of a different Y5 agonist, PYY_{3–36}, in the lateral ventricle of male Sprague-Dawley rats and male C57BL/6J mice results in reduced levels of LH, testosterone, and reduced testicular weight (93, 97). Integration of the GABA signal, which is excitatory for GnRH neurons (98), with NPY neuropeptide in regulation of GnRH neuron excitability has also been reported (99). GABA transmission may have a critical role in conveying energy homeostasis to reproductive function, because knockdown of leptin receptors specifically in GABAergic neurons, but not glutamatergic neurons, delayed puberty onset and decreased fecundity in adults of both sexes (100). These variable effects of NPY and AgRP on GnRH are

thought to be a result of the complex interplay of neuropeptides NPY and AgRP, GABA, and the variety of NPY receptors.

Orexin

The hypothalamic neuropeptide orexin plays a role in sleep and wakefulness and, as its name implies, in the stimulation of feeding behavior (101). Orexin neurons are located in the lateral hypothalamus and send projections throughout the brain, including the preoptic area, where GnRH cell bodies are located, and to the mediobasal hypothalamus and ME, where GnRH terminals project (102). There are two forms of orexin, orexin A and orexin B, with orexin A being more physiologically potent due to its resistance to degradation (103). Rodent and primate orexin neurons express leptin receptors and NPY receptors Y1 and Y4 (104, 105). Orexin neurons were also shown to make synaptic contact with NPY neurons in the ARC and *vice versa* (106). Similar to NPY, orexin has both stimulating and inhibiting effects on GnRH/LH secretion. GnRH neurons express orexin 1 receptors, and orexin neurons appose to GnRH neurons (107). Both orexin A and orexin B stimulate LH secretion in steroid-primed ovariectomized rats, but they inhibit LH release in steroid-deficient rats (108). Tissue explants from male and female rats in proestrus show that orexin A stimulates GnRH release from the hypothalamus, although in diestrus or low-estrogen states orexin A is inhibitory (107). Similarly, orexin inhibited activity of GnRH neurons from ovariectomized mice (109). Expression of orexin receptor 1 was also observed in GT1-7 cells, an immortalized cell model of GnRH neurons, and orexin treatment resulted in increased GnRH mRNA expression and GnRH release (110). In summary, these studies describe a complex neuronal network linking metabolism and reproductive function, whereby POMC, NPY, and orexin neurons mediate effects of metabolic cues on GnRH neurons. However, none of these studies sufficiently explains the negative effects of obesity.

Metabolic Signals

Insulin

Insulin is the main anabolic hormone that regulates cell metabolism via glucose uptake. Brain-specific knockdown of insulin receptor using nestin-CRE, which is expressed early in brain development and affects most cell types, causes infertility due to low LH levels. Because pituitary responsiveness was intact, the effect on LH levels was likely due to hypothalamic dysregulation (111). Infusion of insulin into the lateral ventricle increased LH pulsatility in insulin-deficient, diabetic sheep (112) and in diabetic rats (113). Although most GnRH neurons express insulin receptor, there is no evidence that insulin treatment

activates them (114). Insulin receptor knockdown in GnRH neurons does not alter pubertal development, litter size, or estrous cyclicity (115). Only a limited number of kisspeptin neurons express insulin receptor and, consequently, kisspeptin neuron-specific knockdown of insulin receptor has a minor delay in vaginal opening, an external sign of puberty in one model (116) but not in the other (114), and no effect on estrous cyclicity or litter size in either model. Insulin may exert its function on pituitary gonadotrope by interacting with GnRH signaling pathway in a gonadotrope cell model (117, 118). Hyperinsulinemia in obesity, however, may affect reproductive function. Knockdown of insulin receptor specifically in pituitary gonadotrope or GnRH neurons partially improves fertility of obese, mixed background, mice fed an HFD (40, 119). Therefore, alterations in the normal insulin levels, or other metabolic signals, in obesity may elicit changes in the HPG axis.

Adipose tissue

Adipose tissue is an endocrine organ that regulates systemic nutrient and energy homeostasis via secretion of adipokines, most notably leptin and adiponectin. In addition to adipocytes, adipose tissue contains tissue macrophages, other immune cells, endothelial cells, preadipocytes, and fibroblasts. Fat is deposited in two main depots, visceral and subcutaneous. Subcutaneous fat accounts for 80% of all body fat. Although visceral fats account for 10% to 20% of total body fat in men and 5% to 8% in women, visceral deposits produce more adipokines than do subcutaneous deposits and their enlargement in obesity is more highly associated with negative outcomes, such as insulin resistance and metabolic syndrome (120, 121).

Leptin

Leptin is a protein product of the obese (*ob*) gene, secreted by adipocytes to function as a satiety factor and regulate food intake by signaling to the brain. Leptin also provides a link between metabolism and reproduction, because both male and female mice that lack leptin (*ob/ob* mice) are infertile, and leptin treatment restores reproduction (122–124). Leptin receptor null mice also experience delayed puberty and infertility in both sexes (125). Deletion of leptin receptors from forebrain neurons prevented the onset of puberty, resulted in infertility in males and females, and blocked estradiol-induced LH surge (126). In ovariectomized, fasted, and fed Wistar female rats using the push–pull perfusion technique, leptin induced GnRH, LH, α -MSH, and prolactin secretion in a dose-dependent manner (127). GnRH neurons do not express leptin receptors themselves (126), and leptin may exert its effects on GnRH by acting

through kisspeptin neurons (128). ICV leptin treatment of lean hypogonadotropic ewes with reduced levels of *KISS1* gene expression partially restored *KISS1* levels, whereas ICV treatment with kisspeptin peptide reduced POMC and increased NPY gene expression (129). However, deletion of leptin receptor specifically in kisspeptin neurons had no effect on puberty or fertility (130), and reexpression of leptin receptor solely in kisspeptin neurons did not alleviate lack of pubertal development or infertility (131). Therefore, kisspeptin neurons are not the direct target of leptin in the onset of puberty. Leptin signal is likely relayed by NO-synthesizing neurons in the ventral premammillary nucleus (130) and/or the organum vasculosum laminae terminalis (OVLt) (132). During obesity and altered nutritional status, increased levels of leptin are likely communicated via alternations of NPY and POMC neurons (133, 134). Alternatively, although leptin levels are elevated in obesity, the brain in particular exhibits cellular leptin resistance (135), and thus the biological effects of leptin in obesity may be limited.

Adiponectin

Adiponectin is secreted by adipose tissue and acts to increase insulin sensitivity, fatty acid oxidation, energy expenditure, and reduction of liver gluconeogenesis (136, 137). Unlike leptin, adiponectin levels are negatively correlated with BMI, specifically abdominal fat accumulation (138). Serum adiponectin in normal weight women and women with obesity is higher than serum adiponectin in men (139, 140), which may contribute to sex differences in the pathophysiology of obesity. Female adiponectin null mice displayed impaired fertility, reduced retrieval of oocytes, disrupted estrous cycle, elevated number of atretic follicles, and impaired late folliculogenesis. They also have lower estradiol and FSH, but elevated LH and testosterone at proestrus (141). Twenty percent of the total GnRH population responded to adiponectin, exhibiting hyperpolarization or decreased calcium oscillations (142, 143). Adiponectin also suppressed GnRH secretion in the immortalized GnRH neuron cell line, GT1-7 (144). In the female mouse, adiponectin decreased GnRH neuron activity (142), whereas in male rats, adiponectin inhibited testosterone secretion (145). Adiponectin treatment of pituitary model cell lines inhibited LH release (146). However, it is not known how a change in adiponectin due to increased obesity influences the HPG axis.

Obesity as a Chronic Inflammatory State

Adipose tissue macrophages

Chronic systemic inflammation is a consequence of increased adiposity and exposure to an HFD (147, 148). Obese adipose tissue is characterized by progressive infiltration by macrophages causing inflammation (149–151). Although other immune cells may also be present in the adipose tissue, macrophages are functionally the most significant (150). The number of macrophages in white adipose tissue correlates with adiposity in both humans and mice (149). Furthermore, functional activity is proportional to the degree of obesity, as macrophages become activated with increased adiposity and upregulate the cytokine production (149, 152). Visceral deposits contain a higher density of macrophages than do subcutaneous deposits (56, 153). Following increase in their size, adipocytes produce monocyte chemoattractant protein-1 (MCP-1 or CCL2 chemokine), a ligand for CCR2, which recruits monocytes and leads to macrophage activation (154, 155). Increased secretion of leptin may also contribute to macrophage accumulation by stimulating transport of macrophages to adipose tissue and promoting adhesion of macrophages to endothelial cells (152). In lean individuals, macrophages resemble an M2 phenotype and secrete anti-inflammatory cytokines (156). Development of obesity causes a change in adipose tissue macrophage phenotype and elevated secretion of proinflammatory cytokines, TNF- α , IL-6, and IL-1 β , which increases their concentration in the circulation (152). Macrophage recruitment to the liver via CCR2 in obese mice contributes to insulin resistance (157), indicating that macrophages activated by increased adiposity infiltrate parenchyma of other tissues. Although the brain is considered an immune-privileged site, recruitment of peripheral immune cells to the brain in obesity has been observed as well and may contribute to the local inflammatory response (158, 159). Our study also demonstrated that macrophages are recruited to the hypothalamus of obese male mice (32). Others failed to detect infiltration of peripheral immune cells (160). The difference may be due to the approach, because a limited number of macrophages that infiltrate the hypothalamus may be insufficient for microscopic detection, whereas the flow cytometry that we used may be more sensitive. Macrophages, which we observed in the hypothalamus of male mice fed an HFD, but not in females, express CCR2 and are recruited to specific areas of the hypothalamus (32). That males deposit more fat in visceral depots (32, 56, 61), which recruit and activate more macrophages than do subcutaneous depots, combined with findings that activated macrophages infiltrate other tissues, including the hypothalamus, may explain

some of the sex differences observed in obesity and why males have a higher propensity for obesity-mediated neuroinflammation.

Brain-resident immune cells

Systemic inflammation following exposure to an HFD is accompanied with hypothalamic neuroinflammation (147). Increased inflammation in the central nervous system (CNS) of individuals with obesity may contribute to neuropathologies, such as cerebral ischemia and dementia (161, 162). Microglia are resident immune cells that survey the parenchyma and maintain normal circuit function and plasticity by pruning synapses during development and neurogenesis (163). Neurons communicate with microglia via expression of fractalkine, which binds fractalkine receptor, CX3CR1, expressed specifically by microglia (163). In neuroinflammation, in response to injury, infection, or disease, microglia engulf damaged synapses and cause activity-dependent structural remodeling (164). Microglia also secrete cytokines, which exert numerous functions, including recruitment of peripheral immune cells (165). In obesity, hypothalamic microglia change morphology and become activated (166, 167). Depletion of microglia or prevention of their activation via targeted gene knockdown partially reduces body weight, food intake, and macrophage infiltration (159). Initial reports identified morphological changes specifically in the ARC (159, 168) and postulated that activation of microglia occurs in response to the stress and injury of POMC or NPY neurons in the feeding circuit. Given that both fractalkine and CX3CR1 expression is altered in obesity (169, 170), this is one possibility. Our study detected morphological changes in microglia and an increase in their numbers around OVLT and ME, in addition to the changes previously observed in the ARC (32). In agreement with previous studies, microglia in the cortex did not show any change. We therefore posit that the activation of microglia in these specific areas occurs due to their proximity to the leaky blood–brain barrier (BBB; see below). Microglia in obesity may be activated by an increase in saturated fatty acids in the circulation (171), because an HFD rather than obesity *per se* leads to inflammatory changes (172). Sex differences in microglia activation in response to obesity are dependent on CX3CR1, but independent of ovarian estrogen, indicating that sex differences may arise due to differences in the innate immune cells or in neuron–glia communication (169). Our studies similarly detected morphological changes specifically in the male mice. As stated above, we postulate that this is due to higher inflammation in males due to larger visceral fat accumulation.

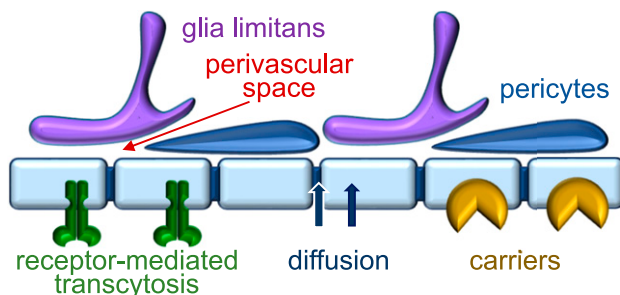
BBB and GnRH neurons

The CNS has long been regarded as an immune-privileged site due to the BBB, composed of the endothelial cells that express tight junction proteins, interspersed pericytes embedded in the basement membrane, and perivascular space bordered by astrocytic endfeet of the glia limitans (Fig. 2). Properties of the BBB have been recently discussed (173–175). Some of the CNS pathologies associated with obesity may occur due to alteration in BBB, as several tight junction proteins are downregulated (176–178). Alternatively, the hypothalamus is bordered by several areas that contain fenestrated capillaries and a leaky BBB (179). These areas, but not other brain regions, were stained by IV injected dyes. Anteriorly, the preoptic area surrounds the OVLT, and

basally, the ARC is juxtaposed to the ME where secretion of pituitary-regulating neuropeptides occurs from neuronal terminals. Both the OVLT and ME contain fenestrated capillaries (180, 181). For example, the OVLT and surrounding thermoregulatory neurons are involved in changes in body temperature and febrile response to systemic inflammation. Pyrogenic, proinflammatory cytokines were previously thought to infiltrate the hypothalamus from circulation via fenestrated capillaries in the OVLT and stimulate thermoregulatory neurons. However, for substances to reach the brain parenchyma, permeability of the OVLT is limited to low molecular mass, whereas tracers >10 kDa are retained in the perivascular space (182). Retention is likely accomplished by the secondary barrier provided by astrocytes or tanocytes (183). Recent studies indeed demonstrate that cytokines, which are ~20 kDa, bind receptors on endothelial cells in the OVLT, which synthesize prostaglandins and in turn increase local production of cytokines in the hypothalamus that affect thermoregulatory neurons (184–187). Because we identified microglia activation around the OVLT following an HFD, we envision that, similarly, systemic inflammation is conveyed via endothelial or glial cells to activate microglia in the vicinity to fenestrated capillaries. This hypothalamic area was recently implicated in energy homeostasis and food intake as well (188). This may not be surprising, because systemic inflammation, in addition to fever, causes sickness behavior, which reduces energy expenditure and limits food intake (189, 190). Our understanding of interactions between the OVLT area and ARC in regulation of food intake, however, is only beginning to emerge.

The ME is a target for hypothalamic neuron terminals that secrete hypophyseal-releasing hormones into the portal vasculature via fenestrations. Permeability of the ME is greater than that of OVLT (191, 192), and tanocytes play a major role providing a barrier and regulating transport to the parenchyma and third ventricle (181, 183, 193–196). However, at times, tanocyte endfeet retract and allow GnRH terminals to contact the perivascular space (197). Our studies demonstrate macrophage infiltration specifically in the areas surrounding the OVLT and ME following an HFD (32). Although surprising, because immune cell infiltration into the CNS occurs only after injury or infection, macrophage infiltration in obesity was demonstrated previously (159). It may be facilitated by the increased permeability of the BBB or elicited by active recruitment from activated microglia. Immune cell infiltration may impair neuronal function in these areas, because macrophages phagocytose damaged cells and engulf synapses (198, 199). We hypothesize that the impairment is more

Blood brain barrier endothelial cells with tight junctions



Circumventricular organs endothelial cells with fenestrations

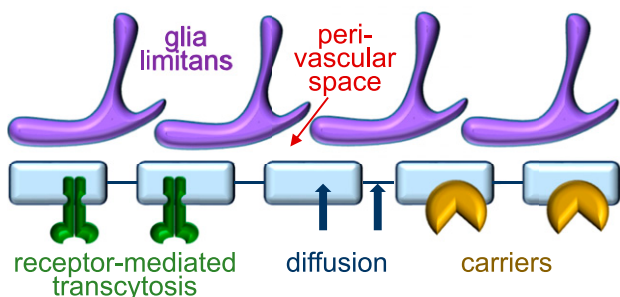


Figure 2. BBB and circumventricular organs. Most of the brain vasculature contains endothelial cells with tight junctions that establish the BBB. Endothelial cells are surrounded by basement membrane in which pericytes, vascular smooth muscle cells, are embedded, and by astrocytic endfeet or glia limitans, which form perivascular space and further regulate access to the brain parenchyma. Depending on the molecule mass and charge, molecules can access parenchyma by diffusion via carrier transport or specific receptors. Several areas in the brain, called circumventricular organs, contain fenestrated capillaries and a leaky BBB. Although access of small molecules to brain parenchyma in these areas was demonstrated using dye or fluorescent labels, recent studies suggest that access is also regulated and primarily occurs via the above-mentioned mechanisms. Access into the brain parenchyma is controlled by the astrocyte endfeet or tanocytes that express tight junction proteins. Hypothalamus is bordered by several circumventricular organs: the OVLT in the rostral part and the ME and posterior pituitary at the ventral side.

highly associated with the location of the impacted neurons rather than their function. POMC and NPY neurons are located in the ARC, which is close to the fenestrated capillaries of the ME. A population of kisspeptin neurons is also located in the ARC (200, 201) and may be exposed to the metabolic changes as well. GnRH neurons are uniquely positioned to sense these changes in the circulation. A large number of GnRH neuron cell bodies are located around the OVLT, and a portion of these send processes beyond the BBB, where they may be able to directly respond to circulating molecules, or to cytokines and prostaglandins secreted by endothelial or glial cells (202). GnRH neurons have long projections that terminate in the ME and directly contact perivascular space during times of high secretory activity when tanycyte endfeet retract (197). Therefore, GnRH neurons on both ends can be exposed to metabolic changes during obesity. We recently demonstrated that obese male mice have increased cFOS expression specifically in GnRH neurons and in cells located close to the OVLT, but not in cells located farther dorsally [Fig. 3 (203)]. Others reported increased cFOS following HFD in specific areas and postulated that the location is specific for the function of the neuronal population (204, 205). cFOS is similarly induced following lipopolysaccharide (LPS) treatment in the hypothalamus (206), and this induction is location specific (207). We postulate that an increase in cFOS gene expression is dependent on the proximity to the vasculature. We envision several possible mechanisms that elicit this induction in obesity. An increased level of circulatory cytokines from adipose tissue activates gene expression in neurons and glia specifically in the regions proximal to fenestrated capillaries. Microglia, in response, become activated and increase their own cytokine production that causes

synapse stripping and recruitment of peripheral or perivascular macrophages. Another possibility is that macrophages, activated by the increased adiposity, infiltrate the hypothalamus specifically through the circumventricular organs and increase local production of cytokines that activate microglia and alter gene expression. Alternatively, metabolic changes, including increased insulin, leptin, glucose, or free fatty acids, can be sensed by the endothelial cells, astrocytes, or microglia (196, 208), also specifically around the fenestrated capillaries of the circumventricular organs, which in turn activate stress signaling and increased cytokine production in any of these cell types. As we demonstrated, increased cytokines activate cFOS and other genes that affect neuronal responses.

Cytokines

We and others reported that obesity causes increased levels of proinflammatory cytokines TNF- α , IL-1 β , and IL-6 in the circulation (32, 152) and locally in the hypothalamus (32, 209). These classical, proinflammatory cytokines are involved in both the normal physiology of the nervous system and in inflammatory processes during infection (175). In the CNS, TNF- α and IL-1 β regulate synaptic plasticity, neurodegeneration, learning and memory, sleep, food and water intake, and astrocyte-mediated synaptic strength (210–214). During infections, TNF- α and IL-1 β mediate the physiological changes, resulting in “sickness behavior” such as fever, reduced food intake, nausea, and fatigue (215–217). As discussed above, in the proximity of the OVLT, these cytokines cause alterations of neuron function and increase thermogenesis, causing fever (184, 218). In several brain diseases, microglia upregulate TNF- α expression, contributing to excitotoxicity by inhibiting glutamate uptake

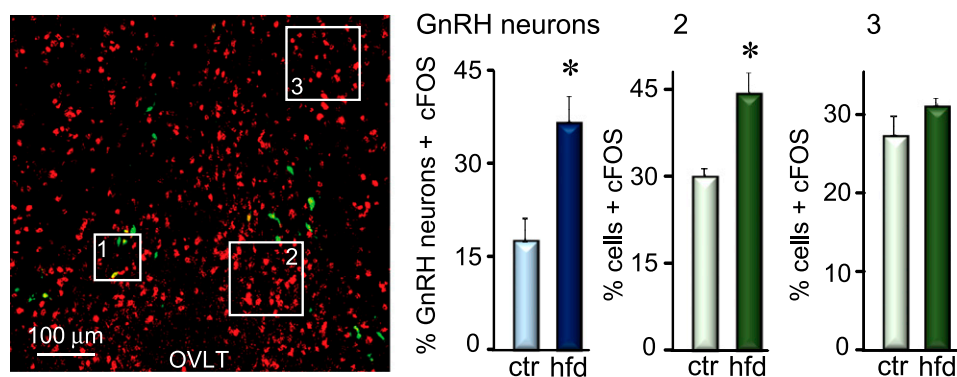


Figure 3. More cells proximal to the OVLT express cFOS following a high-fat diet (hfd). Coronal sections of the preoptic area in the hypothalamus of GnRH-GFP mice following hfd, stained for GFP (green) and cFOS (red). Numbered squares correspond to quantified areas (presented by bar graphs). (1) GnRH neurons (green) that express cFOS (red) were counted following control and an hfd. An increase in the percentage of GnRH neurons with cFOS is observed in obese mice compared with control (ctr); (2 and 3) quantification of the cells, identified by 4',6-diamidino-2-phenylindole (DAPI) stain (not shown) that express cFOS, proximal to the OVLT delineated with the no. 2 square, and distal, dorsally from the OVLT delineated with the no. 3 square, following control and an hfd. * $P < 0.05$, reported in Lainez and Coss (203).

by astrocytes and by increasing localization of ionotropic glutamate receptors to synapses (215). Elevated TNF- α in obesity increases POMC neuron activity, mitochondrial respiration, and ATP production (219). Cytokines may directly affect gene expression in GnRH neurons or neuron function, because GnRH neurons express various cytokine receptors (220). Previous studies have implicated acute inflammation, elicited with an injection of LPS or cytokines themselves, in the impairment of reproductive function and reduced LH (221–228). In particular, repression of GnRH mRNA expression is specifically observed. LPS treatment, resulting in neuroinflammation, represses *Gnrh* mRNA in ewes (229), birds (230) and rats (231). Infusion of the proinflammatory IL-1 β cytokine into the rodent hypothalamus also represses *Gnrh* expression (221). More recently, our group determined that low-grade, chronic inflammation caused by obesity affects GnRH neurons, resulting in reduced levels of LH in circulation and repression of *GnRH* mRNA in the hypothalamus, specifically in male mice (32). Lower *Gnrh* mRNA expression is consistently observed in obese mice (45, 232). Interestingly, *GnRH* mRNA is one of the most repressed genes in obesity, detected by the genome-wide analysis of the whole brain (233).

IL-6 plays a role in the regulation of immune reactions and, in the brain, in naive states, IL-6 contributes to normal neuronal function and neurogenesis (234, 235). Of interest, IL-6 is involved in establishment and maintenance of the BBB by increasing tight junction formation (176). In models of brain injury, infection, LPS injection, or diet-induced obesity, IL-6 is upregulated and modulates inflammation, apoptosis, and oxidative stress. Alternatively, IL-6 is also involved in dampening of the immune responses to promote recovery and healing (236, 237), and it is induced by TNF- α and IL-1 β as a secondary cytokine (238). Although LPS induces IL-6 in both astrocytes and microglia, TNF- α and IL-1 β induce IL-6 production from astrocytes and not microglia (239). Mice that overexpress IL-6 in the CNS exhibit more rapid healing and recovery after traumatic brain injury (240). IL-6 null mice showed increased oxidative stress and impaired repair (241), suggesting a neuroprotective role of IL-6 in brain injury. However, it is still not clear whether IL-6 directly affects neurons involved in reproductive function.

We demonstrated that leukemia inhibitory factor (LIF) represses *Gnrh* gene directly and that LIF levels are increased in the hypothalamus following an HFD (32, 203). LIF is a member of IL-6 family that is induced during the inflammatory response (242). However, its functions are not limited to inflammation: LIF has been demonstrated to play a crucial, nonredundant role in embryo implantation

in both mice and humans (243–245). LIF also maintains stem cells and regulates differentiation of germ cells (246, 247). In the brain, LIF regulates neuronal function and neuronal response to injury (248–250). With respect to GnRH neurons, LIF regulates the migration of GN11 cells, a model of immature GnRH neurons, and the release of GnRH in GT1-7 cells, a model of mature GnRH neurons (251–253). LIF binds its specific receptor, which, similarly to the other members of the IL-6 family, recruits and signals through the gp130 signals transducer, activating the JAK-STAT and MAPK pathways (244). Our recent report that showed increased levels of LIF mRNA in the hypothalamus of HFD mice demonstrated this increase only in males that exhibit a reduction in *GnRH* mRNA and gonadotropin hormones, but not in females that lack changes in GnRH or gonadotropin hormones (32). On the contrary, a family member IL-6 was increased in both sexes. In the

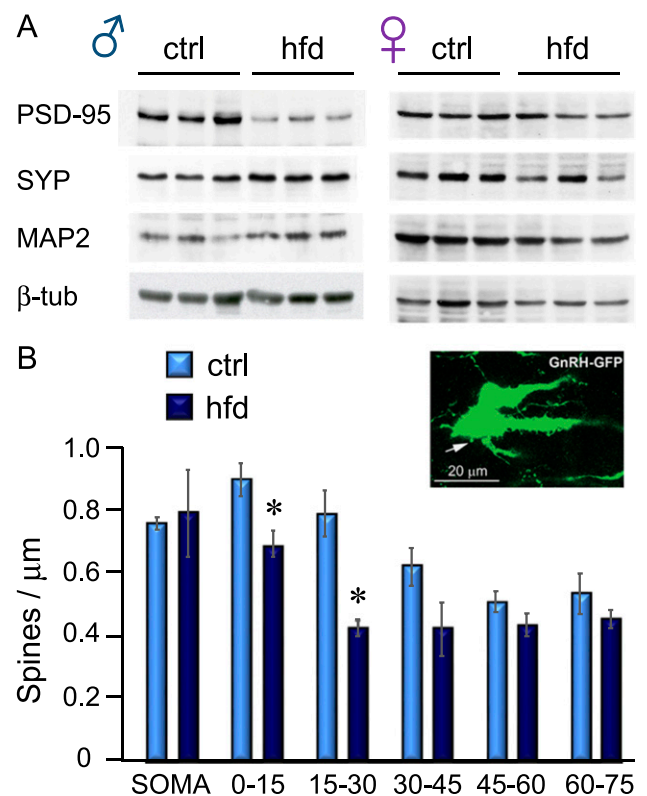


Figure 4. Decreased levels of synaptic proteins in the hypothalamus and spines in GnRH neurons in obese male mice. (A) Western blot of hypothalamic lysates indicates lower levels of postsynaptic density protein 95 (PSD-95), but not of presynaptic protein synaptophysin (SYP), or neuronal marker MAP2, in obese males but not in females. β -Tubulin (β -tub) was used as housekeeping control. (B) Coronal sections of the hypothalamic preoptic area of the GnRH-GFP mice following control and hfd were stained for GFP (green) to allow for spine count. Spines, identified as protrusions by an arrow in the insert, were counted in the soma and along the main axon in 15- μ m intervals, which are indicated below the bars, in reference to the distance from the soma. Reported in Lainez *et al.* (32).

following study, we demonstrated that LIF represses GnRH gene via activation of p38 and induction of cFOS in GnRH neurons (203).

Synaptic remodeling in neuroinflammation

Our recent studies postulated that obesity-mediated impairment of reproductive function stems from neuroinflammatory effects on GnRH neurons. We determined that two mechanisms may be at play: (i) reduction in spine density and consequently the connectivity of the GnRH network (Fig. 4) (32), and (ii) from direct cytokine effects on GnRH gene expression, as described above (203). Gene regulation by cytokines may affect expression of synaptic molecules as well as neuropeptides. For example, cytokines directly affect the levels and function of glutamate receptors (236, 254, 255). Alternatively, neuroinflammation may lead to synaptic remodeling via synapse engulfment by resident or infiltrating immune cells. This leads to changes in network connectivity. Immune cells strip synapses following deviations in neuronal signals, such as fractalkine, as mentioned above. We demonstrated that an HFD, followed by an increase in cytokines, causes reduced levels of synaptic protein, PSD-95, in the hypothalamus and fewer spines on the GnRH proximal dendron itself in male mice. Fewer spines, sites of excitatory synaptic input, combined with reduced levels of synaptic proteins, indicate potential changes in neuronal activity. The reduction of synaptic connections in this particularly plastic area of the GnRH neuron (256–258) may affect regulation of GnRH secretion by an upstream regulatory network. Previous studies determined that both NPY and POMC neurons also exhibit a decrease in synapses following an HFD (259). Specifically, an HFD caused elimination of inhibitory synapses on POMC neurons and excitatory synapses on NPY neurons. Synaptic stripping, reduced levels of synaptic proteins, and fewer spines in obese male C57BL/6J mice were observed in hippocampal neurons as well (260). A decreased performance of obese mice in cognitive tasks was attributed to the loss of synapses, fewer dendritic spines, and a decrease in synaptic proteins in the prefrontal cortex (261). Given that POMC and NPY neurons are located in the ARC, and that GnRH neurons are located close to the OVLT, the synapses may be

eliminated by infiltrating macrophages or activated microglia that occur in these areas (Fig. 5). As stated above, both microglia, brain-resident immune cells and peripheral, monocyte-derived macrophages are involved in synapse stripping.

Conclusion

In this review, we describe neuroendocrine and neuroinflammatory changes underlying sex-specific differences in obesity-induced impairment of the hypothalamic function with potential consequences for reproduction and fertility (Fig. 5). Ovarian estrogen is protective from diet-induced obesity; however, we recently demonstrated that it is not necessary for protection from endocrine and immune changes (32). Females may be protected by a variety of sex differences in the immune system, adipose tissue accumulation, and metabolic rates (61, 65, 66), all of which may be influenced by paracrine, locally produced cytokines, chemokines, adipokines, or hormones, including estrogen. Owing to the complexity in neuronal circuitry that regulates feeding and metabolism, analyses of a single neuropeptide or neuronal population effects on the GnRH neuron or its afferents failed to provide satisfactory explanation for obesity-mediated impairment of reproductive function. Our recent studies

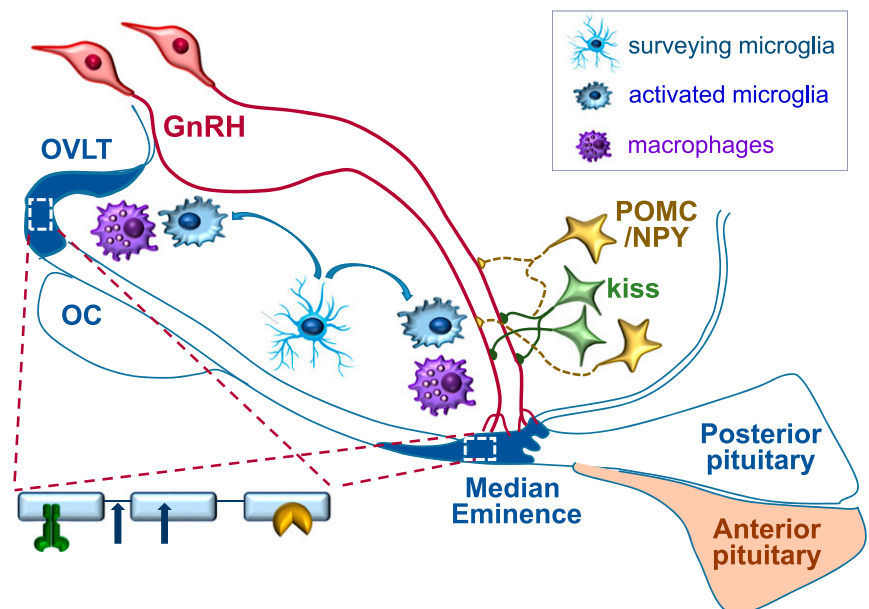


Figure 5. Conclusion. GnRH neurons (red) are uniquely located, proximal to the OVLT at the soma and to the ME at terminals, which are both circumventricular areas with fenestrated capillaries, depicted with dashed lines. Resident immune cells, microglia, are activated following an HFD specifically in the proximity to the OVLT and ME. Change in morphology from resting to activated state is indicated with blue arrows. Peripheral macrophages are recruited to the brain parenchyma, as well. These neuroinflammatory changes, together with changes in the POMC or NPY neurons, which regulate food intake and energy expenditure, or in kisspeptin (kiss) neurons, which are upstream neurons that regulate GnRH neuron secretion, contribute to alternations in GnRH neuron function and diminished reproductive capacity in obesity. OC, optic chiasm.

focused on neuroinflammatory changes and on the role of glial cells, which may affect neuronal function via synaptic changes (164). Previous studies that demonstrated synaptic changes in feeding circuitry in the ARC of the hypothalamus postulated that synapse elimination and microglia activation stem from the neuronal stress elicited by an altered metabolic state (259). We observed neuroinflammation, microglia activation, and peripheral macrophage infiltration, which may be caused either by metabolic changes in the circulation, or by activated macrophages from the visceral adipose tissue, specifically in the vicinity to the fenestrated capillaries. Given this specificity, we postulate that location is one of the determinants of synaptic changes in neuronal populations located close to circumventricular organs. Given that GnRH neurons are uniquely located in the proximity to fenestrated capillaries in both OVLT and ME, they are primed to respond to the neuroimmune alternations.

Acknowledgments

Financial Support: This work was supported by National Institutes of Health/National Institute of Child Health and Human Development Grant R01 HD091167 (to D.C.). N.M.L. was supported in part by the University of California, Riverside Biomedical Sciences graduate program.

Additional Information

Correspondence: Djurdjica Coss, PhD, Division of Biomedical Sciences, School of Medicine, University of California, Riverside, 303 SOM Research Building, 900 University Avenue, Riverside, California 92521. E-mail: djurdjica.coss@ucr.edu.

Disclosure Summary: The authors have nothing to disclose.

Data Availability: All data generated or analyzed during this study are included in this published article or in the data repositories listed in References.

References and Notes

- Moenter SM. GnRH neurons on LSD: a year of rejecting hypotheses that may have made Karl Popper proud. *Endocrinology*. 2018;159(1):199–205.
- Herbison AE. Control of puberty onset and fertility by gonadotropin-releasing hormone neurons. *Nat Rev Endocrinol*. 2016;12(8):452–466.
- Forni PE, Wray S. GnRH, anosmia and hypogonadotropic hypogonadism—where are we? *Front Neuroendocrinol*. 2015;36:165–177.
- Kauffman AS, Clifton DK, Steiner RA. Emerging ideas about kisspeptin–GPR54 signaling in the neuroendocrine regulation of reproduction. *Trends Neurosci*. 2007;30(10):504–511.
- Moore AM, Coolen LM, Porter DT, Goodman RL, Lehman MN. KNDy cells revisited. *Endocrinology*. 2018;159(9):3219–3234.
- Clarkson J, Han SY, Piet R, McLennan T, Kane GM, Ng J, Porteous RW, Kim JS, Colledge WH, Iremonger KJ, Herbison AE.

- Definition of the hypothalamic GnRH pulse generator in mice. *Proc Natl Acad Sci USA*. 2017;114(47):E10216–E10223.
- Plant TM. The neurobiological mechanism underlying hypothalamic GnRH pulse generation: the role of kisspeptin neurons in the arcuate nucleus. *F1000 Res*. 2019;8:982.
- Coss D. Regulation of reproduction via tight control of gonadotropin hormone levels. *Mol Cell Endocrinol*. 2018;463:116–130.
- Thackray VG, Mellon PL, Coss D. Hormones in synergy: regulation of the pituitary gonadotropin genes. *Mol Cell Endocrinol*. 2010;314(2):192–203.
- Panth N, Gavarkovs A, Tamez M, Mattei J. The influence of diet on fertility and the implications for public health nutrition in the United States. *Front Public Health*. 2018;6:211.
- Morton GJ, Meek TH, Schwartz MW. Neurobiology of food intake in health and disease. *Nat Rev Neurosci*. 2014;15(6):367–378.
- Manfredi-Lozano M, Roa J, Ruiz-Pino F, Piet R, Garcia-Galiano D, Pineda R, Zamora A, Leon S, Sanchez-Garrido MA, Romero-Ruiz A, Dieguez C, Vazquez MJ, Herbison AE, Pinilla L, Tena-Sempere M. Defining a novel leptin–melanocortin–kisspeptin pathway involved in the metabolic control of puberty. *Mol Metab*. 2016;5(10):844–857.
- Pirke KM, Schweiger U, Broocks A, Tuschl RJ, Laessle RG. Luteinizing hormone and follicle stimulating hormone secretion patterns in female athletes with and without menstrual disturbances. *Clin Endocrinol (Oxf)*. 1990;33(3):345–353.
- Manfredi-Lozano M, Roa J, Tena-Sempere M. Connecting metabolism and gonadal function: novel central neuropeptide pathways involved in the metabolic control of puberty and fertility. *Front Neuroendocrinol*. 2018;48:37–49.
- Elias CF, Purohit D. Leptin signaling and circuits in puberty and fertility. *Cell Mol Life Sci*. 2013;70(5):841–862.
- Elias CF. Leptin action in pubertal development: recent advances and unanswered questions. *Trends Endocrinol Metab*. 2012;23(1):9–15.
- Chachlaki K, Garthwaite J, Prevot V. The gentle art of saying NO: how nitric oxide gets things done in the hypothalamus. *Nat Rev Endocrinol*. 2017;13(9):521–535.
- Lomniczi A, Loche A, Castellano JM, Ronnekleiv OK, Bosch M, Kaidar G, Knoll JG, Wright H, Pfeifer GP, Ojeda SR. Epigenetic control of female puberty. *Nat Neurosci*. 2013;16(3):281–289.
- Ojeda SR, Lomniczi A, Mastronardi C, Heger S, Roth C, Parent AS, Matagne V, Mungenast AE. Minireview: the neuroendocrine regulation of puberty: is the time ripe for a systems biology approach? *Endocrinology*. 2006;147(3):1166–1174.
- NCD Risk Factor Collaboration (NCD-RisC). Trends in adult body-mass index in 200 countries from 1975 to 2014: a pooled analysis of 1698 population-based measurement studies with 19.2 million participants. *Lancet*. 2016;387(10026):1377–1396.
- 21The Lancet Public Health. Tackling obesity seriously: the time has come. *Lancet Public Health*. 2018;3(4):e153.
- Chavarro JE, Ehrlich S, Colaci DS, Wright DL, Toth TL, Petrozza JC, Hauser R. Body mass index and short-term weight change in relation to treatment outcomes in women undergoing assisted reproduction. *Fertil Steril*. 2012;98(1):109–116.
- Sermondade N, Faure C, Fezeu L, Shayeb AG, Bonde JP, Jensen TK, Van Wely M, Cao J, Martini AC, Eskandar M, Chavarro JE, Koloszar S, Twigg JM, Ramlau-Hansen CH, Borges E Jr, Lotti F, Steegers-Theunissen RP, Zorn B, Polotsky AJ, La Vignera S, Eskenazi B, Tremellen K, Magnusdottir EV, Fejes I, Herberg S, Lévy R, Czernichow S. BMI in relation to sperm count: an updated systematic review and collaborative meta-analysis. *Hum Reprod Update*. 2013;19(3):221–231.
- Vermeulen A, Kaufman JM, Deslypere JP, Thomas G. Attenuated luteinizing hormone (LH) pulse amplitude but normal LH pulse frequency, and its relation to plasma androgens in hypogonadism of obese men. *J Clin Endocrinol Metab*. 1993;76(5):1140–1146.

25. Wu FC, Tajar A, Pye SR, Silman AJ, Finn JD, O'Neill TW, Bartfai G, Casanueva F, Forti G, Giwercman A, Huhtaniemi IT, Kula K, Punab M, Boonen S, Vanderschueren D; European Male Aging Study Group. Hypothalamic-pituitary-testicular axis disruptions in older men are differentially linked to age and modifiable risk factors: the European Male Aging Study. *J Clin Endocrinol Metab.* 2008;**93**(7):2737–2745.
26. Mah PM, Wittert GA. Obesity and testicular function. *Mol Cell Endocrinol.* 2010;**316**(2):180–186.
27. Hammoud AO, Wilde N, Gibson M, Parks A, Carrell DT, Meikle AW. Male obesity and alteration in sperm parameters. *Fertil Steril.* 2008;**90**(6):2222–2225.
28. Vendramini V, Cedenho AP, Miraglia SM, Spaine DM. Reproductive function of the male obese Zucker rats: alteration in sperm production and sperm DNA damage. *Reprod Sci.* 2014;**21**(2):221–229.
29. Jensen TK, Andersson AM, Jørgensen N, Andersen AG, Carlsen E, Petersen JH, Skakkebaek NE. Body mass index in relation to semen quality and reproductive hormones among 1,558 Danish men. *Fertil Steril.* 2004;**82**(4):863–870.
30. Bakos HW, Henshaw RC, Mitchell M, Lane M. Paternal body mass index is associated with decreased blastocyst development and reduced live birth rates following assisted reproductive technology. *Fertil Steril.* 2011;**95**(5):1700–1704.
31. Bakos HW, Mitchell M, Setchell BP, Lane M. The effect of paternal diet-induced obesity on sperm function and fertilization in a mouse model. *Int J Androl.* 2011;**34**(5 Pt 1):402–410.
32. Lainez NM, Jonak CR, Nair MG, Ethell IM, Wilson EH, Carson MJ, Coss D. Diet-induced obesity elicits macrophage infiltration and reduction in spine density in the hypothalamus of male but not female mice. *Front Immunol.* 2018;**9**:1992.
33. Jain A, Polotsky AJ, Rochester D, Berga SL, Loucks T, Zeitlian G, Gibbs K, Polotsky HN, Feng S, Isaac B, Santoro N. Pulsatile luteinizing hormone amplitude and progesterone metabolite excretion are reduced in obese women. *J Clin Endocrinol Metab.* 2007;**92**(7):2468–2473.
34. Yeung EH, Zhang C, Albert PS, Mumford SL, Ye A, Perkins NJ, Wactawski-Wende J, Schisterman EF. Adiposity and sex hormones across the menstrual cycle: the BioCycle Study. *Int J Obes.* 2013;**37**(2):237–243.
35. Jensen TK, Scheike T, Keiding N, Schaumburg I, Grandjean P. Fecundability in relation to body mass and menstrual cycle patterns. *Epidemiology.* 1999;**10**(4):422–428.
36. Santoro N, Lasley B, McConnell D, Allsworth J, Crawford S, Gold EB, Finkelstein JS, Greendale GA, Kelsey J, Korenman S, Luborsky JL, Matthews K, Midgley R, Powell L, Sabatine J, Schocken M, Sowers MF, Weiss G. Body size and ethnicity are associated with menstrual cycle alterations in women in the early menopausal transition: the Study of Women's Health Across the Nation (SWAN) daily hormone study. *J Clin Endocrinol Metab.* 2004;**89**(6):2622–2631.
37. Ahmed SR, Ellah MA, Mohamed OA, Eid HM. Prepregnancy obesity and pregnancy outcome. *Int J Health Sci (Qassim).* 2009;**3**(2):203–208.
38. Hamilton-Fairley D, Kiddy D, Watson H, Paterson C, Franks S. Association of moderate obesity with a poor pregnancy outcome in women with polycystic ovary syndrome treated with low dose gonadotrophin. *Br J Obstet Gynaecol.* 1992;**99**(2):128–131.
39. McGee WK, Bishop CV, Pohl CR, Chang RJ, Marshall JC, Pau FK, Stouffer RL, Cameron JL. Effects of hyperandrogenemia and increased adiposity on reproductive and metabolic parameters in young adult female monkeys. *Am J Physiol Endocrinol Metab.* 2014;**306**(11):E1292–E1304.
40. DiVall SA, Herrera D, Sklar B, Wu S, Wondisford F, Radovick S, Wolfe A. Insulin receptor signaling in the GnRH neuron plays a role in the abnormal GnRH pulsatility of obese female mice. *PLoS One.* 2015;**10**(3):e0119995.
41. Fernandez MO, Sharma S, Kim S, Rickert E, Hsueh K, Hwang V, Olefsky JM, Webster NJ. Obese neuronal PPAR γ knockout mice are leptin sensitive but show impaired glucose tolerance and fertility. *Endocrinology.* 2017;**158**(1):121–133.
42. Grenman S, Rönnemaa T, Irjala K, Kaihola HL, Grönroos M. Sex steroid, gonadotropin, cortisol, and prolactin levels in healthy, massively obese women: correlation with abdominal fat cell size and effect of weight reduction. *J Clin Endocrinol Metab.* 1986;**63**(6):1257–1261.
43. Montgomery MK, Hallahan NL, Brown SH, Liu M, Mitchell TW, Cooney GJ, Turner N. Mouse strain-dependent variation in obesity and glucose homeostasis in response to high-fat feeding. *Diabetologia.* 2013;**56**(5):1129–1139.
44. Farrell GC, Mridha AR, Yeh MM, Arsov T, Van Rooyen DM, Brooling J, Nguyen T, Heydet D, Delghingaro-Augusto V, Nolan CJ, Shackel NA, McLennan SV, Teoh NC, Larter CZ. Strain dependence of diet-induced NASH and liver fibrosis in obese mice is linked to diabetes and inflammatory phenotype. *Liver Int.* 2014;**34**(7):1084–1093.
45. Tortoriello DV, McMinin J, Chua SC. Dietary-induced obesity and hypothalamic infertility in female DBA/2J mice. *Endocrinology.* 2004;**145**(3):1238–1247.
46. Collins S, Martin TL, Surwit RS, Robidoux J. Genetic vulnerability to diet-induced obesity in the C57BL/6J mouse: physiological and molecular characteristics. *Physiol Behav.* 2004;**81**(2):243–248.
47. Wang CY, Liao JK. A mouse model of diet-induced obesity and insulin resistance. *Methods Mol Biol.* 2012;**821**:421–433.
48. Fisher-Wellman KH, Ryan TE, Smith CD, Gilliam LA, Lin CT, Reese LR, Torres MJ, Neuffer PD. A direct comparison of metabolic responses to high-fat diet in C57BL/6J and C57BL/6NJ mice. *Diabetes.* 2016;**65**(11):3249–3261.
49. Kawashita E, Ishihara K, Nomoto M, Taniguchi M, Akiba S. A comparative analysis of hepatic pathological phenotypes in C57BL/6J and C57BL/6N mouse strains in non-alcoholic steatohepatitis models. *Sci Rep.* 2019;**9**(1):204.
50. Nicholson A, Reifsnnyder PC, Malcolm RD, Lucas CA, MacGregor GR, Zhang W, Leiter EH. Diet-induced obesity in two C57BL/6 substrains with intact or mutant nicotinamide nucleotide transhydrogenase (*Nnt*) gene. *Obesity (Silver Spring).* 2010;**18**(10):1902–1905.
51. Schemmel R, Mickelsen O, Gill JL. Dietary obesity in rats: body weight and body fat accretion in seven strains of rats. *J Nutr.* 1970;**100**(9):1041–1048.
52. Miranda J, Eseberri I, Lasa A, Portillo MP. Lipid metabolism in adipose tissue and liver from diet-induced obese rats: a comparison between Wistar and Sprague-Dawley strains. *J Physiol Biochem.* 2018;**74**(4):655–666.
53. Marques C, Meireles M, Norberto S, Leite J, Freitas J, Pestana D, Faria A, Calhau C. High-fat diet-induced obesity rat model: a comparison between Wistar and Sprague-Dawley rat. *Adipocyte.* 2015;**5**(1):11–21.
54. Mn M, Smvk P, Battula KK, Nv G, Kalashikam RR. Differential response of rat strains to obesogenic diets underlines the importance of genetic makeup of an individual towards obesity. *Sci Rep.* 2017;**7**(1):9162.
55. Rankinen T, Zuberi A, Chagnon YC, Weisnagel SJ, Argyropoulos G, Walts B, Pérusse L, Bouchard C. The human obesity gene map: the 2005 update. *Obesity (Silver Spring).* 2006;**14**(4):529–644.
56. Palmer BF, Clegg DJ. The sexual dimorphism of obesity. *Mol Cell Endocrinol.* 2015;**402**:113–119.
57. Heine PA, Taylor JA, Iwamoto GA, Lubahn DB, Cooke PS. Increased adipose tissue in male and female estrogen receptor- α knockout mice. *Proc Natl Acad Sci USA.* 2000;**97**(23):12729–12734.
58. Jones ME, Thorburn AW, Britt KL, Hewitt KN, Wreford NG, Proietto J, Oz OK, Leury BJ, Robertson KM, Yao S, Simpson ER.

- Aromatase-deficient (ArKO) mice have a phenotype of increased adiposity. *Proc Natl Acad Sci USA*. 2000;**97**(23):12735–12740.
59. Gibb FW, Dixon JM, Clarke C, Homer NZ, Faqehi AM, Andrew R, Walker BR. Higher insulin resistance and adiposity in postmenopausal women with breast cancer treated with aromatase inhibitors. *J Clin Endocrinol Metab*. 2019;**104**(9):3670–3678.
60. Grove KL, Fried SK, Greenberg AS, Xiao XQ, Clegg DJ. A microarray analysis of sexual dimorphism of adipose tissues in high-fat-diet-induced obese mice. *Int J Obes*. 2010;**34**(6):989–1000.
61. Stubbins RE, Holcomb VB, Hong J, Núñez NP. Estrogen modulates abdominal adiposity and protects female mice from obesity and impaired glucose tolerance. *Eur J Nutr*. 2012;**51**(7):861–870.
62. Sullivan EL, Daniels AJ, Koegler FH, Cameron JL. Evidence in female rhesus monkeys (*Macaca mulatta*) that nighttime caloric intake is not associated with weight gain. *Obes Res*. 2005;**13**(12):2072–2080.
63. Shay DA, Vieira-Potter VJ, Rosenfeld CS. Sexually dimorphic effects of aromatase on neurobehavioral responses. *Front Mol Neurosci*. 2018;**11**:374.
64. Zhao H, Zhou L, Shanguan AJ, Bulun SE. Aromatase expression and regulation in breast and endometrial cancer. *J Mol Endocrinol*. 2016;**57**(1):R19–R33.
65. Gubbels Bupp MR. Sex, the aging immune system, and chronic disease. *Cell Immunol*. 2015;**294**(2):102–110.
66. Gaignard P, Fréchet M, Liere P, Thérond P, Schumacher M, Slama A, Guennoun R. Sex differences in brain mitochondrial metabolism: influence of endogenous steroids and stroke. *J Neuroendocrinol*. 2018;**30**(2):e12497.
67. Schwartz MW. Brain pathways controlling food intake and body weight. *Exp Biol Med (Maywood)*. 2001;**226**(11):978–981.
68. Crown A, Clifton DK, Steiner RA. Neuropeptide signaling in the integration of metabolism and reproduction. *Neuroendocrinology*. 2007;**86**(3):175–182.
69. Evans MC, Anderson GM. Neuroendocrine integration of nutritional signals on reproduction. *J Mol Endocrinol*. 2017;**58**(2):R107–R128.
70. Evans MC, Anderson GM. Integration of circadian and metabolic control of reproductive function. *Endocrinology*. 2018;**159**(11):3661–3673.
71. Hill JW, Elmquist JK, Elias CF. Hypothalamic pathways linking energy balance and reproduction. *Am J Physiol Endocrinol Metab*. 2008;**294**(5):E827–E832.
72. Bellefontaine N, Elias CF. Minireview: metabolic control of the reproductive physiology: insights from genetic mouse models. *Horm Behav*. 2014;**66**(1):7–14.
73. Hill JW, Elias CF. Neuroanatomical framework of the metabolic control of reproduction. *Physiol Rev*. 2018;**98**(4):2349–2380.
74. Dores RM, Liang L, Davis P, Thomas AL, Petko B. 60 Years of POMC: melanocortin receptors: evolution of ligand selectivity for melanocortin peptides. *J Mol Endocrinol*. 2016;**56**(4):T119–T133.
75. Girardet C, Butler AA. Neural melanocortin receptors in obesity and related metabolic disorders. *Biochim Biophys Acta*. 2014;**1842**(3):482–494.
76. Balthasar N, Coppari R, McMinn J, Liu SM, Lee CE, Tang V, Kenny CD, McGovern RA, Chua SC Jr, Elmquist JK, Lowell BB. Leptin receptor signaling in POMC neurons is required for normal body weight homeostasis. *Neuron*. 2004;**42**(6):983–991.
77. Leranath C, MacLusky NJ, Shanabrough M, Naftolin F. Immunohistochemical evidence for synaptic connections between proopiomelanocortin-immunoreactive axons and LH-RH neurons in the preoptic area of the rat. *Brain Res*. 1988;**449**(1–2):167–176.
78. Roa J, Herbison AE. Direct regulation of GnRH neuron excitability by arcuate nucleus POMC and NPY neuron neuropeptides in female mice. *Endocrinology*. 2012;**153**(11):5587–5599.
79. Leadem CA, Kalra SP. Reversal of β -endorphin-induced blockade of ovulation and luteinizing hormone surge with prostaglandin E₂. *Endocrinology*. 1985;**117**(2):684–689.
80. Israel DD, Sheffer-Babila S, de Luca C, Jo YH, Liu SM, Xia Q, Spergel DJ, Dun SL, Dun NJ, Chua SC Jr. Effects of leptin and melanocortin signaling interactions on pubertal development and reproduction. *Endocrinology*. 2012;**153**(5):2408–2419.
81. Cravo RM, Margatho LO, Osborne-Lawrence S, Donato J Jr, Atkin S, Bookout AL, Rovinsky S, Frazão R, Lee CE, Gautron L, Zigman JM, Elias CF. Characterization of *Kiss1* neurons using transgenic mouse models. *Neuroscience*. 2011;**173**:37–56.
82. Marshall CJ, Desroziere E, McLennan T, Campbell RE. Defining subpopulations of arcuate nucleus GABA neurons in male, female, and prenatally androgenized female mice. *Neuroendocrinology*. 2017;**105**(2):157–169.
83. Roseberry AG, Liu H, Jackson AC, Cai X, Friedman JM. Neuropeptide Y-mediated inhibition of proopiomelanocortin neurons in the arcuate nucleus shows enhanced desensitization in *ob/ob* mice. *Neuron*. 2004;**41**(5):711–722.
84. Cowley MA, Smart JL, Rubinstein M, Cerdán MG, Diano S, Horvath TL, Cone RD, Low MJ. Leptin activates anorexigenic POMC neurons through a neural network in the arcuate nucleus. *Nature*. 2001;**411**(6836):480–484.
85. Palmiter RD, Erickson JC, Holoopeter G, Baraban SC, Schwartz MW. Life without neuropeptide Y. *Recent Prog Horm Res*. 1998;**53**:163–199.
86. Ste Marie L, Luquet S, Cole TB, Palmiter RD. Modulation of neuropeptide Y expression in adult mice does not affect feeding. *Proc Natl Acad Sci USA*. 2005;**102**(51):18632–18637.
87. Qian S, Chen H, Weingarh D, Trumbauer ME, Novi DE, Guan X, Yu H, Shen Z, Feng Y, Frazier E, Chen A, Camacho RE, Shearman LP, Gopal-Truter S, MacNeil DJ, Van der Ploeg LH, Marsh DJ. Neither agouti-related protein nor neuropeptide Y is critically required for the regulation of energy homeostasis in mice. *Mol Cell Biol*. 2002;**22**(14):5027–5035.
88. Luquet S, Perez FA, Hnasko TS, Palmiter RD. NPY/AgRP neurons are essential for feeding in adult mice but can be ablated in neonates. *Science*. 2005;**310**(5748):683–685.
89. Turi GF, Liposits Z, Moenter SM, Fekete C, Hrabovszky E. Origin of neuropeptide Y-containing afferents to gonadotropin-releasing hormone neurons in male mice. *Endocrinology*. 2003;**144**(11):4967–4974.
90. Li C, Chen P, Smith MS. Morphological evidence for direct interaction between arcuate nucleus neuropeptide Y (NPY) neurons and gonadotropin-releasing hormone neurons and the possible involvement of NPY Y1 receptors. *Endocrinology*. 1999;**140**(11):5382–5390.
91. Campbell RE, French-Mullen JM, Cowley MA, Smith MS, Grove KL. Hypothalamic circuitry of neuropeptide Y regulation of neuroendocrine function and food intake via the Y5 receptor subtype. *Neuroendocrinology*. 2001;**74**(2):106–119.
92. Pau KY, Berria M, Hess DL, Spies HG. Hypothalamic site-dependent effects of neuropeptide Y on gonadotropin-releasing hormone secretion in rhesus macaques. *J Neuroendocrinol*. 1995;**7**(1):63–67.
93. Raposinho PD, Pierroz DD, Broqua P, White RB, Pedrazzini T, Aubert ML. Chronic administration of neuropeptide Y into the lateral ventricle of C57BL/6J male mice produces an obesity syndrome including hyperphagia, hyperleptinemia, insulin resistance, and hypogonadism. *Mol Cell Endocrinol*. 2001;**185**(1–2):195–204.
94. Horvath TL, Pu S, Dube MG, Diano S, Kalra SP. A GABA-neuropeptide Y (NPY) interplay in LH release. *Peptides*. 2001;**22**(3):473–481.
95. Silva MS, Desroziere E, Hessler S, Prescott M, Coyle C, Herbison AE, Campbell RE. Activation of arcuate nucleus GABA neurons promotes luteinizing hormone secretion and reproductive

- dysfunction: implications for polycystic ovary syndrome. *EBio-Medicine*. 2019;44:582–596.
96. Vulliémoz NR, Xiao E, Xia-Zhang L, Wardlaw SL, Ferin M. Central infusion of agouti-related peptide suppresses pulsatile luteinizing hormone release in the ovariectomized rhesus monkey. *Endocrinology*. 2005;146(2):784–789.
 97. Raposinho PD, Broqua P, Pierroz DD, Hayward A, Dumont Y, Quirion R, Junien JL, Aubert ML. Evidence that the inhibition of luteinizing hormone secretion exerted by central administration of neuropeptide Y (NPY) in the rat is predominantly mediated by the NPY-Y5 receptor subtype. *Endocrinology*. 1999;140(9):4046–4055.
 98. Herbison AE, Moenter SM. Depolarising and hyperpolarising actions of GABA_A receptor activation on gonadotrophin-releasing hormone neurones: towards an emerging consensus. *J Neuroendocrinol*. 2011;23(7):557–569.
 99. Sullivan SD, Moenter SM. γ -Aminobutyric acid neurons integrate and rapidly transmit permissive and inhibitory metabolic cues to gonadotropin-releasing hormone neurons. *Endocrinology*. 2004;145(3):1194–1202.
 100. Zuure WA, Roberts AL, Quenell JH, Anderson GM. Leptin signaling in GABA neurons, but not glutamate neurons, is required for reproductive function. *J Neurosci*. 2013;33(45):17874–17883.
 101. Edwards CM, Abusnana S, Sunter D, Murphy KG, Ghatei MA, Bloom SR. The effect of the orexins on food intake: comparison with neuropeptide Y, melanin-concentrating hormone and galanin. *J Endocrinol*. 1999;160(3):R7–R12.
 102. Peyron C, Tighe DK, van den Pol AN, de Lecea L, Heller HC, Sutcliffe JG, Kilduff TS. Neurons containing hypocretin (orexin) project to multiple neuronal systems. *J Neurosci*. 1998;18(23):9996–10015.
 103. Sakurai T, Amemiya A, Ishii M, Matsuzaki I, Chemelli RM, Tanaka H, Williams SC, Richardson JA, Kozlowski GP, Wilson S, Arch JR, Buckingham RE, Haynes AC, Carr SA, Annan RS, McNulty DE, Liu WS, Terrett JA, Elshourbagy NA, Bergsma DJ, Yanagisawa M. Orexins and orexin receptors: a family of hypothalamic neuropeptides and G protein-coupled receptors that regulate feeding behavior. *Cell*. 1998;92(4):573–585.
 104. Horvath TL, Diano S, van den Pol AN. Synaptic interaction between hypocretin (orexin) and neuropeptide Y cells in the rodent and primate hypothalamus: a novel circuit implicated in metabolic and endocrine regulations. *J Neurosci*. 1999;19(3):1072–1087.
 105. Campbell RE, Smith MS, Allen SE, Grayson BE, Ffrench-Mullen JM, Grove KL. Orexin neurons express a functional pancreatic polypeptide Y4 receptor. *J Neurosci*. 2003;23(4):1487–1497.
 106. Elias CF, Saper CB, Maratos-Flier E, Tritos NA, Lee C, Kelly J, Tatro JB, Hoffman GE, Ollmann MM, Barsh GS, Sakurai T, Yanagisawa M, Elmquist JK. Chemically defined projections linking the mediobasal hypothalamus and the lateral hypothalamic area. *J Comp Neurol*. 1998;402(4):442–459.
 107. Campbell RE, Grove KL, Smith MS. Gonadotropin-releasing hormone neurons coexpress orexin 1 receptor immunoreactivity and receive direct contacts by orexin fibers. *Endocrinology*. 2003;144(4):1542–1548.
 108. Pu S, Jain MR, Kalra PS, Kalra SP. Orexins, a novel family of hypothalamic neuropeptides, modulate pituitary luteinizing hormone secretion in an ovarian steroid-dependent manner. *Regul Pept*. 1998;78(1–3):133–136.
 109. Gaskins GT, Moenter SM. Orexin suppresses gonadotropin-releasing hormone (GnRH) neuron activity in the mouse. *Endocrinology*. 2012;153(8):3850–3860.
 110. Sasson R, Dearth RK, White RS, Chappell PE, Mellon PL. Orexin A induces GnRH gene expression and secretion from GT1-7 hypothalamic GnRH neurons. *Neuroendocrinology*. 2006;84(6):353–363.
 111. Brüning JC, Gautam D, Burks DJ, Gillette J, Schubert M, Orban PC, Klein R, Krone W, Müller-Wieland D, Kahn CR. Role of brain insulin receptor in control of body weight and reproduction. *Science*. 2000;289(5487):2122–2125.
 112. Tanaka T, Nagatani S, Bucholtz DC, Ohkura S, Tsukamura H, Maeda K, Foster DL. Central action of insulin regulates pulsatile luteinizing hormone secretion in the diabetic sheep model. *Biol Reprod*. 2000;62(5):1256–1261.
 113. Kovacs P, Parlow AF, Karkanias GB. Effect of centrally administered insulin on gonadotropin-releasing hormone neuron activity and luteinizing hormone surge in the diabetic female rat. *Neuroendocrinology*. 2002;76(6):357–365.
 114. Evans MC, Rizwan M, Mayer C, Boehm U, Anderson GM. Evidence that insulin signalling in gonadotrophin-releasing hormone and kisspeptin neurones does not play an essential role in metabolic regulation of fertility in mice. *J Neuroendocrinol*. 2014;26(7):468–479.
 115. Divall SA, Williams TR, Carver SE, Koch L, Brüning JC, Kahn CR, Wondisford F, Radovick S, Wolfe A. Divergent roles of growth factors in the GnRH regulation of puberty in mice. *J Clin Invest*. 2010;120(8):2900–2909.
 116. Qiu X, Dowling AR, Marino JS, Faulkner LD, Bryant B, Brüning JC, Elias CF, Hill JW. Delayed puberty but normal fertility in mice with selective deletion of insulin receptors from *Kiss1* cells. *Endocrinology*. 2013;154(3):1337–1348.
 117. Buggs C, Weinberg F, Kim E, Wolfe A, Radovick S, Wondisford F. Insulin augments GnRH-stimulated LHB gene expression by Egr-1. *Mol Cell Endocrinol*. 2006;249(1–2):99–106.
 118. Navratil AM, Song H, Hernandez JB, Cherrington BD, Santos SJ, Low JM, Do MH, Lawson MA. Insulin augments gonadotropin-releasing hormone induction of translation in LBT2 cells. *Mol Cell Endocrinol*. 2009;311(1–2):47–54.
 119. Brothers KJ, Wu S, DiVall SA, Messmer MR, Kahn CR, Miller RS, Radovick S, Wondisford FE, Wolfe A. Rescue of obesity-induced infertility in female mice due to a pituitary-specific knockout of the insulin receptor. *Cell Metab*. 2010;12(3):295–305.
 120. Freedland ES. Role of a critical visceral adipose tissue threshold (CVATT) in metabolic syndrome: implications for controlling dietary carbohydrates: a review. *Nutr Metab (Lond)*. 2004;1(1):12.
 121. Motoshima H, Wu X, Sinha MK, Hardy VE, Rosato EL, Barbot DJ, Rosato FE, Goldstein BJ. Differential regulation of adiponectin secretion from cultured human omental and subcutaneous adipocytes: effects of insulin and rosiglitazone. *J Clin Endocrinol Metab*. 2002;87(12):5662–5667.
 122. Zhang Y, Proenca R, Maffei M, Barone M, Leopold L, Friedman JM. Positional cloning of the mouse obese gene and its human homologue. *Nature*. 1994;372(6505):425–432.
 123. Chehab FF, Lim ME, Lu R. Correction of the sterility defect in homozygous obese female mice by treatment with the human recombinant leptin. *Nat Genet*. 1996;12(3):318–320.
 124. Mounzih K, Lu R, Chehab FF. Leptin treatment rescues the sterility of genetically obese *ob/ob* males. *Endocrinology*. 1997;138(3):1190–1193.
 125. Kowalski TJ, Liu SM, Leibel RL, Chua SC Jr. Transgenic complementation of leptin-receptor deficiency. I. Rescue of the obesity/diabetes phenotype of LEPR-null mice expressing a LEPR-B transgene. *Diabetes*. 2001;50(2):425–435.
 126. Quenell JH, Mulligan AC, Tups A, Liu X, Phipps SJ, Kemp CJ, Herbison AE, Grattan DR, Anderson GM. Leptin indirectly regulates gonadotropin-releasing hormone neuronal function. *Endocrinology*. 2009;150(6):2805–2812.
 127. Watanobe H. Leptin directly acts within the hypothalamus to stimulate gonadotropin-releasing hormone secretion in vivo in rats. *J Physiol*. 2002;545(1):255–268.
 128. Smith JT, Acohido BV, Clifton DK, Steiner RA. Kiss-1 neurones are direct targets for leptin in the *ob/ob* mouse. *J Neuroendocrinol*. 2006;18(4):298–303.

129. Backholer K, Smith JT, Rao A, Pereira A, Iqbal J, Ogawa S, Li Q, Clarke IJ. Kisspeptin cells in the ewe brain respond to leptin and communicate with neuropeptide Y and proopiomelanocortin cells. *Endocrinology*. 2010;151(5):2233–2243.
130. Donato J Jr, Cravo RM, Frazão R, Gautron L, Scott MM, Lachey J, Castro IA, Margatho LO, Lee S, Lee C, Richardson JA, Friedman J, Chua S Jr, Coppari R, Zigman JM, Elmquist JK, Elias CF. Leptin's effect on puberty in mice is relayed by the ventral premammillary nucleus and does not require signaling in Kiss1 neurons. *J Clin Invest*. 2011;121(1):355–368.
131. Cravo RM, Frazao R, Perello M, Osborne-Lawrence S, Williams KW, Zigman JM, Vianna C, Elias CF. Leptin signaling in Kiss1 neurons arises after pubertal development. *PLoS One*. 2013;8(3):e58698.
132. Bellefontaine N, Chachlaki K, Parkash J, Vanacker C, Colledge W, d'Anglemon de Tassigny X, Garthwaite J, Bouret SG, Prevot V. Leptin-dependent neuronal NO signaling in the preoptic hypothalamus facilitates reproduction. *J Clin Invest*. 2014;124(6):2550–2559.
133. Mercer JG, Hoggard N, Williams LM, Lawrence CB, Hannah LT, Trayhurn P. Localization of leptin receptor mRNA and the long form splice variant (Ob-Rb) in mouse hypothalamus and adjacent brain regions by in situ hybridization. *FEBS Lett*. 1996;387(2–3):113–116.
134. Mercer JG, Hoggard N, Williams LM, Lawrence CB, Hannah LT, Morgan PJ, Trayhurn P. Coexpression of leptin receptor and preproneuropeptide Y mRNA in arcuate nucleus of mouse hypothalamus. *J Neuroendocrinol*. 1996;8(10):733–735.
135. Myers MG Jr, Leibel RL, Seeley RJ, Schwartz MW. Obesity and leptin resistance: distinguishing cause from effect. *Trends Endocrinol Metab*. 2010;21(11):643–651.
136. Yamauchi T, Kamon J, Waki H, Terauchi Y, Kubota N, Hara K, Mori Y, Ide T, Murakami K, Tsuboyama-Kasaoka N, Ezaki O, Akanuma Y, Gavrilova O, Vinson C, Reitman ML, Kagechika H, Shudo K, Yoda M, Nakano Y, Tobe K, Nagai R, Kimura S, Tomita M, Froguel P, Kadowaki T. The fat-derived hormone adiponectin reverses insulin resistance associated with both lipodystrophy and obesity. *Nat Med*. 2001;7(8):941–946.
137. Satoh H, Nguyen MT, Trujillo M, Imamura T, Usui I, Scherer PE, Olefsky JM. Adenovirus-mediated adiponectin expression augments skeletal muscle insulin sensitivity in male Wistar rats. *Diabetes*. 2005;54(5):1304–1313.
138. Scherer PE. Adipose tissue: from lipid storage compartment to endocrine organ. *Diabetes*. 2006;55(6):1537–1545.
139. Arita Y, Kihara S, Ouchi N, Takahashi M, Maeda K, Miyagawa J, Hotta K, Shimomura I, Nakamura T, Miyaoka K, Kuriyama H, Nishida M, Yamashita S, Okubo K, Matsubara K, Muraguchi M, Ohmoto Y, Funahashi T, Matsuzawa Y. Paradoxical decrease of an adipose-specific protein, adiponectin, in obesity. *Biochem Biophys Res Commun*. 1999;257(1):79–83.
140. Combs TP, Berg AH, Rajala MW, Klebanov S, Iyengar P, Jimenez-Chillaron JC, Patti ME, Klein SL, Weinstein RS, Scherer PE. Sexual differentiation, pregnancy, calorie restriction, and aging affect the adipocyte-specific secretory protein adiponectin. *Diabetes*. 2003;52(2):268–276.
141. Cheng L, Shi H, Jin Y, Li X, Pan J, Lai Y, Lin Y, Jin Y, Roy G, Zhao A, Li F. Adiponectin deficiency leads to female subfertility and ovarian dysfunctions in mice. *Endocrinology*. 2016;157(12):4875–4887.
142. Klenke U, Taylor-Burds C, Wray S. Metabolic influences on reproduction: adiponectin attenuates GnRH neuronal activity in female mice. *Endocrinology*. 2014;155(5):1851–1863.
143. Rodriguez-Pacheco F, Martinez-Fuentes AJ, Tovar S, Pinilla L, Tena-Sempere M, Dieguez C, Castaño JP, Malagon MM. Regulation of pituitary cell function by adiponectin. *Endocrinology*. 2007;148(1):401–410.
144. Wen JP, Lv WS, Yang J, Nie AF, Cheng XB, Yang Y, Ge Y, Li XY, Ning G. Globular adiponectin inhibits GnRH secretion from GT1-7 hypothalamic GnRH neurons by induction of hyperpolarization of membrane potential. *Biochem Biophys Res Commun*. 2008;371(4):756–761.
145. Caminos JE, Nogueiras R, Gaytán F, Pineda R, González CR, Barreiro ML, Castaño JP, Malagón MM, Pinilla L, Toppari J, Diéguez C, Tena-Sempere M. Novel expression and direct effects of adiponectin in the rat testis. *Endocrinology*. 2008;149(7):3390–3402.
146. Lu M, Tang Q, Olefsky JM, Mellon PL, Webster NJ. Adiponectin activates adenosine monophosphate-activated protein kinase and decreases luteinizing hormone secretion in LβT2 gonadotropes. *Mol Endocrinol*. 2008;22(3):760–771.
147. Dorfman MD, Thaler JP. Hypothalamic inflammation and gliosis in obesity. *Curr Opin Endocrinol Diabetes Obes*. 2015;22(5):325–330.
148. Osborn O, Olefsky JM. The cellular and signaling networks linking the immune system and metabolism in disease. *Nat Med*. 2012;18(3):363–374.
149. Weisberg SP, McCann D, Desai M, Rosenbaum M, Leibel RL, Ferrante AW Jr. Obesity is associated with macrophage accumulation in adipose tissue. *J Clin Invest*. 2003;112(12):1796–1808.
150. Curat CA, Wegner V, Sengenès C, Miranville A, Tonus C, Busse R, Bouloumié A. Macrophages in human visceral adipose tissue: increased accumulation in obesity and a source of resistin and visfatin. *Diabetologia*. 2006;49(4):744–747.
151. Xu H, Barnes GT, Yang Q, Tan G, Yang D, Chou CJ, Sole J, Nichols A, Ross JS, Tartaglia LA, Chen H. Chronic inflammation in fat plays a crucial role in the development of obesity-related insulin resistance. *J Clin Invest*. 2003;112(12):1821–1830.
152. Olefsky JM, Glass CK. Macrophages, inflammation, and insulin resistance. *Annu Rev Physiol*. 2010;72(1):219–246.
153. Strissel KJ, Stancheva Z, Miyoshi H, Perfield JW II, DeFuria J, Jick Z, Greenberg AS, Obin MS. Adipocyte death, adipose tissue remodeling, and obesity complications. *Diabetes*. 2007;56(12):2910–2918.
154. Kanda H, Tateya S, Tamori Y, Kotani K, Hiasa K, Kitazawa R, Kitazawa S, Miyachi H, Maeda S, Egashira K, Kasuga M. MCP-1 contributes to macrophage infiltration into adipose tissue, insulin resistance, and hepatic steatosis in obesity. *J Clin Invest*. 2006;116(6):1494–1505.
155. Kaplan JL, Marshall MA, C McSkimming C, Harmon DB, Garmey JC, Oldham SN, Hallowell P, McNamara CA. Adipocyte progenitor cells initiate monocyte chemoattractant protein-1-mediated macrophage accumulation in visceral adipose tissue. *Mol Metab*. 2015;4(11):779–794.
156. Appari M, Channon KM, McNeill E. Metabolic regulation of adipose tissue macrophage function in obesity and diabetes. *Antioxid Redox Signal*. 2018;29(3):297–312.
157. Obstfeld AE, Sugaru E, Thearle M, Francisco AM, Gayet C, Ginsberg HN, Ables EV, Ferrante AW Jr. C-C chemokine receptor 2 (CCR2) regulates the hepatic recruitment of myeloid cells that promote obesity-induced hepatic steatosis. *Diabetes*. 2010;59(4):916–925.
158. Buckman LB, Hasty AH, Flaherty DK, Buckman CT, Thompson MM, Matlock BK, Weller K, Ellacott KL. Obesity induced by a high-fat diet is associated with increased immune cell entry into the central nervous system. *Brain Behav Immun*. 2014;35:33–42.
159. Valdearcos M, Douglass JD, Robblee MM, Dorfman MD, Stiffler DR, Bennett ML, Gerritse I, Fasnacht R, Barres BA, Thaler JP, Koliwad SK. Microglial inflammatory signaling orchestrates the hypothalamic immune response to dietary excess and mediates obesity susceptibility [published correction appears in *Cell Metab*. 2018;27(6):1356]. *Cell Metab*. 2017;26(1):185–197.e3.
160. Baufeld C, Osterloh A, Prokop S, Miller KR, Heppner FL. High-fat diet-induced brain region-specific phenotypic spectrum of CNS resident microglia. *Acta Neuropathol*. 2016;132(3):361–375.

161. Dorrance AM, Matin N, Pires PW. The effects of obesity on the cerebral vasculature. *Curr Vasc Pharmacol*. 2014;12(3):462–472.
162. Sochocka M, Diniz BS, Leszek J. Inflammatory response in the CNS: friend or foe? *Mol Neurobiol*. 2017;54(10):8071–8089.
163. Paolicelli RC, Bisht K, Tremblay ME. Fractalkine regulation of microglial physiology and consequences on the brain and behavior. *Front Cell Neurosci*. 2014;8:129.
164. Schafer DP, Lehrman EK, Stevens B. The “quad-partite” synapse: microglia-synapse interactions in the developing and mature CNS. *Glia*. 2013;61(1):24–36.
165. Carson MJ, Thrash JC, Walter B. The cellular response in neuroinflammation: The role of leukocytes, microglia and astrocytes in neuronal death and survival. *Clin Neurosci Res*. 2006;6(5):237–245.
166. Mendes NF, Kim YB, Velloso LA, Araújo EP. Hypothalamic microglial activation in obesity: a mini-review. *Front Neurosci*. 2018;12:846.
167. Ávalos Y, Kerr B, Maliqueo M, Dorfman M. Cell and molecular mechanisms behind diet-induced hypothalamic inflammation and obesity. *J Neuroendocrinol*. 2018;30(10):e12598.
168. De Souza CT, Araujo EP, Bordin S, Ashimine R, Zollner RL, Boschero AC, Saad MJ, Velloso LA. Consumption of a fat-rich diet activates a proinflammatory response and induces insulin resistance in the hypothalamus. *Endocrinology*. 2005;146(10):4192–4199.
169. Dorfman MD, Krull JE, Douglass JD, Fasnacht R, Lara-Lince F, Meek TH, Shi X, Damian V, Nguyen HT, Matsen ME, Morton GJ, Thaler JP. Sex differences in microglial CX3CR1 signalling determine obesity susceptibility in mice. *Nat Commun*. 2017;8(1):14556.
170. Morari J, Anhe GF, Nascimento LF, de Moura RF, Razolli D, Solon C, Guadagnini D, Souza G, Mattos AH, Tobar N, Ramos CD, Pascoal VD, Saad MJ, Lopes-Cendes I, Moraes JC, Velloso LA. Fractalkine (CX3CL1) is involved in the early activation of hypothalamic inflammation in experimental obesity. *Diabetes*. 2014;63(11):3770–3784.
171. Valdearcos M, Robblee MM, Benjamin DI, Nomura DK, Xu AW, Koliwad SK. Microglia dictate the impact of saturated fat consumption on hypothalamic inflammation and neuronal function. *Cell Reports*. 2014;9(6):2124–2138.
172. Gao Y, Ottaway N, Schriever SC, Legutko B, García-Cáceres C, de la Fuente E, Mergen C, Bour S, Thaler JP, Seeley RJ, Filosa J, Stern JE, Perez-Tilve D, Schwartz MW, Tschöp MH, Yi CX. Hormones and diet, but not body weight, control hypothalamic microglial activity. *Glia*. 2014;62(1):17–25.
173. Banks WA. The blood-brain barrier as an endocrine tissue. *Nat Rev Endocrinol*. 2019;15(8):444–455.
174. Rhea EM, Banks WA. Role of the blood-brain barrier in central nervous system insulin resistance. *Front Neurosci*. 2019;13:521.
175. Erickson MA, Dohi K, Banks WA. Neuroinflammation: a common pathway in CNS diseases as mediated at the blood-brain barrier. *Neuroimmunomodulation*. 2012;19(2):121–130.
176. Obermeier B, Daneman R, Ransohoff RM. Development, maintenance and disruption of the blood-brain barrier. *Nat Med*. 2013;19(12):1584–1596.
177. Kim DW, Glendining KA, Grattan DR, Jasoni CL. Maternal obesity in the mouse compromises the blood-brain barrier in the arcuate nucleus of offspring. *Endocrinology*. 2016;157(6):2229–2242.
178. Van Dyken P, Lacoste B. Impact of metabolic syndrome on neuroinflammation and the blood-brain barrier. *Front Neurosci*. 2018;12:930.
179. Miyata S. New aspects in fenestrated capillary and tissue dynamics in the sensory circumventricular organs of adult brains. *Front Neurosci*. 2015;9:390.
180. McKinley MJ, Denton DA, Ryan PJ, Yao ST, Stefanidis A, Oldfield BJ. From sensory circumventricular organs to cerebral cortex: neural pathways controlling thirst and hunger. *J Neuroendocrinol*. 2019;31(3):e12689.
181. Ciofi P, Garret M, Lapirot O, Lafon P, Loyens A, Prévot V, Levine JE. Brain-endocrine interactions: a microvascular route in the mediobasal hypothalamus. *Endocrinology*. 2009;150(12):5509–5519.
182. Morita S, Furube E, Mannari T, Okuda H, Tatsumi K, Wanaka A, Miyata S. Heterogeneous vascular permeability and alternative diffusion barrier in sensory circumventricular organs of adult mouse brain. *Cell Tissue Res*. 2016;363(2):497–511.
183. Langlet F, Mullier A, Bouret SG, Prevot V, Dehouck B. Tanycyte-like cells form a blood-cerebrospinal fluid barrier in the circumventricular organs of the mouse brain. *J Comp Neurol*. 2013;521(15):3389–3405.
184. Romanovsky AA, Almeida MC, Aronoff DM, Ivanov AI, Konsman JP, Steiner AA, Turek VF. Fever and hypothermia in systemic inflammation: recent discoveries and revisions. *Front Biosci*. 2005;10:2193–2216.
185. Shibata M, Blatteis CM. Human recombinant tumor necrosis factor and interferon affect the activity of neurons in the organum vasculosum laminae terminalis. *Brain Res*. 1991;562(2):323–326.
186. Dinarello CA. Infection, fever, and exogenous and endogenous pyrogens: some concepts have changed. *J Endotoxin Res*. 2004;10(4):201–222.
187. Ott D, Murgott J, Rafalzik S, Wuchert F, Schmalenbeck B, Roth J, Gerstberger R. Neurons and glial cells of the rat organum vasculosum laminae terminalis directly respond to lipopolysaccharide and pyrogenic cytokines. *Brain Res*. 2010;1363:93–106.
188. Yu S, François M, Huesing C, Münzberg H. The hypothalamic preoptic area and body weight control. *Neuroendocrinology*. 2018;106(2):187–194.
189. Dantzer R. Cytokine, sickness behavior, and depression. *Neurol Clin*. 2006;24(3):441–460.
190. Harden LM, Kent S, Pittman QJ, Roth J. Fever and sickness behavior: friend or foe? *Brain Behav Immun*. 2015;50:322–333.
191. Schaeffer M, Langlet F, Lafont C, Molino F, Hodson DJ, Roux T, Lamarque L, Verdié P, Bourrier E, Dehouck B, Banères JL, Martinez J, Méry PF, Marie J, Trinquet E, Fehrentz JA, Prévot V, Mollard P. Rapid sensing of circulating ghrelin by hypothalamic appetite-modifying neurons. *Proc Natl Acad Sci USA*. 2013;110(4):1512–1517.
192. Morita S, Miyata S. Different vascular permeability between the sensory and secretory circumventricular organs of adult mouse brain. *Cell Tissue Res*. 2012;349(2):589–603.
193. Prevot V, Dehouck B, Sharif A, Ciofi P, Giacobini P, Clasadonte J. The versatile tanycyte: a hypothalamic integrator of reproduction and energy metabolism. *Endocr Rev*. 2018;39(3):333–368.
194. Rodríguez EM, Blázquez JL, Guerra M. The design of barriers in the hypothalamus allows the median eminence and the arcuate nucleus to enjoy private milieus: the former opens to the portal blood and the latter to the cerebrospinal fluid. *Peptides*. 2010;31(4):757–776.
195. Prevot V, Langlet F, Dehouck B. Flipping the tanycyte switch: how circulating signals gain direct access to the metabolic brain. *Aging (Albany NY)*. 2013;5(5):332–334.
196. García-Cáceres C, Balland E, Prevot V, Luquet S, Woods SC, Koch M, Horvath TL, Yi CX, Chowen JA, Verkhatsky A, Araque A, Bechmann I, Tschöp MH. Role of astrocytes, microglia, and tanycytes in brain control of systemic metabolism. *Nat Neurosci*. 2019;22(1):7–14.
197. Prevot V, Hanchate NK, Bellefontaine N, Sharif A, Parkash J, Estrella C, Allet C, de Seranno S, Campagne C, de Tassigny X, Baroncini M. Function-related structural plasticity of the GnRH system: a role for neuronal-glial-endothelial interactions. *Front Neuroendocrinol*. 2010;31(3):241–258.
198. Kim E, Cho S. Microglia and monocyte-derived macrophages in stroke. *Neurotherapeutics*. 2016;13(4):702–718.

199. London A, Cohen M, Schwartz M. Microglia and monocyte-derived macrophages: functionally distinct populations that act in concert in CNS plasticity and repair. *Front Cell Neurosci.* 2013;7:34.
200. Kirilov M, Clarkson J, Liu X, Roa J, Campos P, Porteous R, Schütz G, Herbison AE. Dependence of fertility on kisspeptin-Gpr54 signaling at the GnRH neuron. *Nat Commun.* 2013;4(1):2492.
201. Goodman RL, Lehman MN. Kisspeptin neurons from mice to men: similarities and differences. *Endocrinology.* 2012;153(11):5105–5118.
202. Herde MK, Geist K, Campbell RE, Herbison AE. Gonadotropin-releasing hormone neurons extend complex highly branched dendritic trees outside the blood-brain barrier. *Endocrinology.* 2011;152(10):3832–3841.
203. Lainez NM, Coss D. Leukemia inhibitory factor represses GnRH gene expression via cFOS during inflammation in male mice. *Neuroendocrinology.* 2019;108(4):291–307.
204. Valdivia S, Patrone A, Reynaldo M, Perello M. Acute high fat diet consumption activates the mesolimbic circuit and requires orexin signaling in a mouse model [published correction appears in *PLoS One.* 2014;9(3):e92932]. *PLoS One.* 2014;9(1):e87478.
205. Xin X, Storlien LH, Huang XF. Hypothalamic c-fos-like immunoreactivity in high-fat diet-induced obese and resistant mice. *Brain Res Bull.* 2000;52(4):235–242.
206. Beynon AL, Coogan AN. Diurnal, age, and immune regulation of interleukin-1 β and interleukin-1 type 1 receptor in the mouse suprachiasmatic nucleus. *Chronobiol Int.* 2010;27(8):1546–1563.
207. Belevych N, Buchanan K, Chen Q, Bailey M, Quan N. Location-specific activation of the paraventricular nucleus of the hypothalamus by localized inflammation. *Brain Behav Immun.* 2010;24(7):1137–1147.
208. Jais A, Brüning JC. Hypothalamic inflammation in obesity and metabolic disease. *J Clin Invest.* 2017;127(1):24–32.
209. Thaler JP, Yi CX, Schur EA, Guyenet SJ, Hwang BH, Dietrich MO, Zhao X, Sarruf DA, Izgur V, Maravilla KR, Nguyen HT, Fischer JD, Matsen ME, Wisse BE, Morton GJ, Horvath TL, Baskin DG, Tschöp MH, Schwartz MW. Obesity is associated with hypothalamic injury in rodents and humans. *J Clin Invest.* 2012;122(1):153–162.
210. Aggarwal BB. Signalling pathways of the TNF superfamily: a double-edged sword. *Nat Rev Immunol.* 2003;3(9):745–756.
211. Rizzo FR, Musella A, De Vito F, Fresegna D, Bullitta S, Vanni V, Guadalupi L, Stampanoni Bassi M, Buttari F, Mandolesi G, Centonze D, Gentile A. Tumor necrosis factor and interleukin-1 β modulate synaptic plasticity during neuroinflammation. *Neural Plast.* 2018;2018:8430123.
212. Kempuraj D, Thangavel R, Natteru PA, Selvakumar GP, Saeed D, Zahoor H, Zaheer S, Iyer SS, Zaheer A. Neuroinflammation induces neurodegeneration. *J Neurol Neurosurg Spine.* 2016;1(1):1003.
213. Allan SM, Tyrrell PJ, Rothwell NJ. Interleukin-1 and neuronal injury. *Nat Rev Immunol.* 2005;5(8):629–640.
214. Brown RE, Basheer R, McKenna JT, Strecker RE, McCarley RW. Control of sleep and wakefulness. *Physiol Rev.* 2012;92(3):1087–1187.
215. Olmos G, Lladó J. Tumor necrosis factor alpha: a link between neuroinflammation and excitotoxicity. *Mediators Inflamm.* 2014;2014:861231.
216. Sankowski R, Mader S, Valdés-Ferrer SI. Systemic inflammation and the brain: novel roles of genetic, molecular, and environmental cues as drivers of neurodegeneration. *Front Cell Neurosci.* 2015;9:28.
217. Yirmiya R, Pollak Y, Morag M, Reichenberg A, Barak O, Avitsur R, Shavit Y, Ovadia H, Weidenfeld J, Morag A, Newman ME, Pollmächer T. Illness, cytokines, and depression. *Ann NY Acad Sci.* 2000;917(1):478–487.
218. Blomqvist A, Engblom D. Neural mechanisms of inflammation-induced fever. *Neuroscientist.* 2018;24(4):381–399.
219. Yi CX, Walter M, Gao Y, Pitra S, Legutko B, Kälin S, Layritz C, García-Cáceres C, Biellohuby M, Bidlingmaier M, Woods SC, Ghanem A, Conzelmann KK, Stern JE, Jastroch M, Tschöp MH. TNF α drives mitochondrial stress in POMC neurons in obesity. *Nat Commun.* 2017;8(1):15143.
220. Jasoni CL, Todman MG, Han SK, Herbison AE. Expression of mRNAs encoding receptors that mediate stress signals in gonadotropin-releasing hormone neurons of the mouse. *Neuroendocrinology.* 2005;82(5-6):320–328.
221. Rivest S, Lee S, Attardi B, Rivier C. The chronic intracerebroventricular infusion of interleukin-1 beta alters the activity of the hypothalamic-pituitary-gonadal axis of cycling rats. I. Effect on LHRH and gonadotropin biosynthesis and secretion. *Endocrinology.* 1993;133(6):2424–2430.
222. Rivest S, Rivier C. Centrally injected interleukin-1 beta inhibits the hypothalamic LHRH secretion and circulating LH levels via prostaglandins in rats. *J Neuroendocrinol.* 1993;5(4):445–450.
223. Kalra PS, Edwards TG, Xu B, Jain M, Kalra SP. The anti-gonadotropic effects of cytokines: the role of neuropeptides. *Domest Anim Endocrinol.* 1998;15(5):321–332.
224. Feleder C, Wuttke W, Moguilevsky JA. Hypothalamic relationships between interleukin-6 and LHRH release affected by bacterial endotoxin in adult male rats. Involvement of the inhibitory amino acid system. *Biol Signals.* 1998;7(1):7–14.
225. Watanobe H, Hayakawa Y. Hypothalamic interleukin-1 β and tumor necrosis factor- α , but not interleukin-6, mediate the endotoxin-induced suppression of the reproductive axis in rats. *Endocrinology.* 2003;144(11):4868–4875.
226. Dondi D, Limonta P, Montagnani Marelli M, Piva F. Mechanism of action of interleukin-1 in modulating gonadotropin secretion. In vivo and in vitro studies. *Biol Signals Recept.* 1998;7(1):55–60.
227. Feng YJ, Shalts E, Xia LN, Rivier J, Rivier C, Vale W, Ferin M. An inhibitory effects of interleukin-1 α on basal gonadotropin release in the ovariectomized rhesus monkey: reversal by a corticotropin-releasing factor antagonist. *Endocrinology.* 1991;128(4):2077–2082.
228. Yoo MJ, Nishihara M, Takahashi M. Tumor necrosis factor- α mediates endotoxin induced suppression of gonadotropin-releasing hormone pulse generator activity in the rat. *Endocr J.* 1997;44(1):141–148.
229. Haziak K, Herman AP, Tomaszewska-Zaremba D. Effects of central injection of anti-LPS antibody and blockade of TLR4 on GnRH/LH secretion during immunological stress in anestrus ewes. *Mediators Inflamm.* 2014;2014:867170.
230. Lopes PC, Wingfield JC, Bentley GE. Lipopolysaccharide injection induces rapid decrease of hypothalamic GnRH mRNA and peptide, but does not affect GnIH in zebra finches. *Horm Behav.* 2012;62(2):173–179.
231. Nappi RE, Rivest S. Effect of immune and metabolic challenges on the luteinizing hormone-releasing hormone neuronal system in cycling female rats: an evaluation at the transcriptional level. *Endocrinology.* 1997;138(4):1374–1384.
232. Sharma S, Morinaga H, Hwang V, Fan W, Fernandez MO, Varki N, Olefsky JM, Webster NJ. Free fatty acids induce *Lhb* mRNA but suppress *Fshb* mRNA in pituitary L β T2 gonadotropes and diet-induced obesity reduces FSH levels in male mice and disrupts the proestrous LH/FSH surge in female mice. *Endocrinology.* 2013;154(6):2188–2199.
233. Nam KN, Mounier A, Wolfe CM, Fitz NF, Carter AY, Castranio EL, Kamboh HI, Reeves VL, Wang J, Han X, Schug J, Lefterov I, Koldamova R. Effect of high fat diet on phenotype, brain transcriptome and lipidome in Alzheimer's model mice. *Sci Rep.* 2017;7(1):4307.
234. Covarrubias AJ, Horng T. IL-6 strikes a balance in metabolic inflammation. *Cell Metab.* 2014;19(6):898–899.
235. Mauer J, Denson JL, Brüning JC. Versatile functions for IL-6 in metabolism and cancer. *Trends Immunol.* 2015;36(2):92–101.

236. Erta M, Quintana A, Hidalgo J. Interleukin-6, a major cytokine in the central nervous system. *Int J Biol Sci*. 2012;8(9):1254–1266.
237. Penkowa M, Moos T, Carrasco J, Hadberg H, Molinero A, Bluethmann H, Hidalgo J. Strongly compromised inflammatory response to brain injury in interleukin-6-deficient mice. *Glia*. 1999;25(4):343–357.
238. Del Giudice M, Gangestad SW. Rethinking IL-6 and CRP: why they are more than inflammatory biomarkers, and why it matters. *Brain Behav Immun*. 2018;70:61–75.
239. Sawada M, Suzumura A, Marunouchi T. TNF α induces IL-6 production by astrocytes but not by microglia. *Brain Res*. 1992;583(1–2):296–299.
240. Swartz KR, Liu F, Sewell D, Schochet T, Campbell I, Sandor M, Fabry Z. Interleukin-6 promotes post-traumatic healing in the central nervous system. *Brain Res*. 2001;896(1–2):86–95.
241. Klein MA, Möller JC, Jones LL, Bluethmann H, Kreutzberg GW, Raivich G. Impaired neuroglial activation in interleukin-6 deficient mice. *Glia*. 1997;19(3):227–233.
242. Villiger PM, Geng Y, Lotz M. Induction of cytokine expression by leukemia inhibitory factor. *J Clin Invest*. 1993;91(4):1575–1581.
243. Suman P, Malhotra SS, Gupta SK. LIF-STAT signaling and trophoblast biology. *JAK-STAT*. 2013;2(4):e25155.
244. Nicola NA, Babon JJ. Leukemia inhibitory factor (LIF). *Cytokine Growth Factor Rev*. 2015;26(5):533–544.
245. Rosario GX, Stewart CL. The multifaceted actions of leukaemia inhibitory factor in mediating uterine receptivity and embryo implantation. *Am J Reprod Immunol*. 2016;75(3):246–255.
246. Ohtsuka S, Nakai-Futatsugi Y, Niwa H. LIF signal in mouse embryonic stem cells. *JAK-STAT*. 2015;4(2):e1086520.
247. Onishi K, Zandstra PW. LIF signaling in stem cells and development. *Development*. 2015;142(13):2230–2236.
248. Patterson PH. Leukemia inhibitory factor, a cytokine at the interface between neurobiology and immunology. *Proc Natl Acad Sci USA*. 1994;91(17):7833–7835.
249. Holmberg KH, Patterson PH. Leukemia inhibitory factor is a key regulator of astrocytic, microglial and neuronal responses in a low-dose pilocarpine injury model. *Brain Res*. 2006;1075(1):26–35.
250. Bauer S, Patterson PH. Leukemia inhibitory factor promotes neural stem cell self-renewal in the adult brain. *J Neurosci*. 2006;26(46):12089–12099.
251. Dozio E, Ruscica M, Galliera E, Corsi MM, Magni P. Leptin, ciliary neurotrophic factor, leukemia inhibitory factor and interleukin-6: class-I cytokines involved in the neuroendocrine regulation of the reproductive function. *Curr Protein Pept Sci*. 2009;10(6):577–584.
252. Dozio E, Watanobe H, Ruscica M, Maggi R, Motta M, Magni P. Expression of functional ciliary neurotrophic factor receptors in immortalized gonadotrophin-releasing hormone-secreting neurones. *J Neuroendocrinol*. 2005;17(5):286–291.
253. Magni P, Dozio E, Ruscica M, Watanobe H, Cariboni A, Zaninetti R, Motta M, Maggi R. Leukemia inhibitory factor induces the chemomigration of immortalized gonadotropin-releasing hormone neurons through the independent activation of the Janus kinase/signal transducer and activator of transcription 3, mitogen-activated protein kinase/extracellularly regulated kinase 1/2, and phosphatidylinositol 3-kinase/Akt signaling pathways. *Mol Endocrinol*. 2007;21(5):1163–1174.
254. Di Filippo M, Sarchielli P, Picconi B, Calabresi P. Neuroinflammation and synaptic plasticity: theoretical basis for a novel, immune-centred, therapeutic approach to neurological disorders. *Trends Pharmacol Sci*. 2008;29(8):402–412.
255. McAfoose J, Baune BT. Evidence for a cytokine model of cognitive function. *Neurosci Biobehav Rev*. 2009;33(3):355–366.
256. Chan H, Prescott M, Ong Z, Herde MK, Herbison AE, Campbell RE. Dendritic spine plasticity in gonadotropin-releasing hormone (GnRH) neurons activated at the time of the preovulatory surge. *Endocrinology*. 2011;152(12):4906–4914.
257. Cottrell EC, Campbell RE, Han SK, Herbison AE. Postnatal remodeling of dendritic structure and spine density in gonadotropin-releasing hormone neurons. *Endocrinology*. 2006;147(8):3652–3661.
258. Campbell RE, Han SK, Herbison AE. Biocytin filling of adult gonadotropin-releasing hormone neurons in situ reveals extensive, spiny, dendritic processes. *Endocrinology*. 2005;146(3):1163–1169.
259. Horvath TL, Sarman B, García-Cáceres C, Enriori PJ, Sotonyi P, Shanabrough M, Borok E, Argente J, Chowen JA, Perez-Tilve D, Pfluger PT, Brönneke HS, Levin BE, Diano S, Cowley MA, Tschöp MH. Synaptic input organization of the melanocortin system predicts diet-induced hypothalamic reactive gliosis and obesity. *Proc Natl Acad Sci USA*. 2010;107(33):14875–14880.
260. Hao S, Dey A, Yu X, Stranahan AM. Dietary obesity reversibly induces synaptic stripping by microglia and impairs hippocampal plasticity. *Brain Behav Immun*. 2016;51:230–239.
261. Bocarsly ME, Fasolino M, Kane GA, LaMarca EA, Kirschen GW, Karatsoreos IN, McEwen BS, Gould E. Obesity diminishes synaptic markers, alters microglial morphology, and impairs cognitive function. *Proc Natl Acad Sci USA*. 2015;112(51):15731–15736.