

The hematologic consequences of obesity

Johanna C. Purdy MD¹  | Joseph J. Shatzel MD^{2,3}

¹Division of General Internal Medicine and Geriatrics, Oregon Health & Science University, Portland, OR, USA

²Division of Hematology and Oncology, Oregon Health & Science University, Portland, OR, USA

³Department of Biomedical Engineering, Oregon Health & Science University, Portland, OR, USA

Correspondence

Joseph Shatzel, MD, Division of Hematology and Oncology, Oregon Health & Science University, 3181 SW Sam Jackson Park Rd, Portland, OR, USA.
Email: shatzel@ohsu.edu

Funding information

National Institutes of Health, National Heart, Lung, and Blood Institute, Grant/Award Number: HL151367

Abstract

The prevalence of obesity is increasing and progressively influencing physician-patient interactions. While there is a sizable amount of data demonstrating that obesity is a state of low-grade inflammation, to our knowledge, there is no single review summarizing its effects on hematologic parameters and thrombotic risk. We performed a literature search which largely surfaced observational studies, with a few systematic reviews and meta-analyses of these studies. We took care to review the mechanisms driving an inflammatory state and obesity's effect on white blood cells, red blood cells, platelets, and thrombotic risk. There is an observed relative, and sometimes absolute leukocytosis driven by this inflammatory state. Obesity is also associated with increased platelet counts and an increased risk for venous thromboembolism (VTE). Lastly, the association between obesity, iron deficiency (ID), and red blood cell counts may be present but remains uncertain. Recognizing the above associations may provide clinicians with reassurance regarding otherwise unexplained hematologic abnormalities in obese individuals. We hope this review will prompt future studies to further understand the underlying mechanisms driving these abnormalities and identify modifiable risk factors and potential therapeutic targets to prevent the development of probable obesity-associated conditions with significant morbidity and mortality, such as ID and VTE.

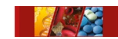
KEYWORDS

anemia, iron deficiency, leukocytosis, thrombocytosis, venous thromboembolism

1 | INTRODUCTION

The pervasiveness of obesity in the United States has been dramatically increasing over the last several decades and shows no signs of slowing. In 2015-2016, the prevalence of obesity in the US population was 39.8%, accounting for about 93.3 million US adults,¹ with new data predicting that by 2030 nearly 1 in 2 adults will be obese.² As our patient interactions become progressively influenced by the health effects of obesity, it is becoming increasingly important to understand the consequences of the hematologic alterations observed in these individuals.

Obesity has been associated with a state of low-grade systemic inflammation characterized by an adipose tissue driven acute-phase response, with interleukin (IL)-6, IL-1, IL-8, and tumor necrosis factor (TNF)- α playing the largest role and resulting in subsequent elevations of acute-phase proteins such as c-reactive protein (CRP). This produces an environment defined by inflammation, with theoretical and established down-stream effects. This review will summarize our current understanding of this pro-inflammatory state and its alteration of hematologic parameters, particularly with regard to white blood cell, red blood cell, and platelet counts and perturbances to thrombosis.



2 | THE PRO-INFLAMMATORY STATE OF OBESITY

2.1 | Macrophages and adipose tissue

There is ample evidence that adipose tissue is a primary source of inflammatory mediators.^{3,4} White adipose tissue is the most abundant type of adipose tissue and is composed of many cell types. Adipocytes are the most plentiful, but adipose tissue macrophages are also present, with a relative population size that correlates with the level of adiposity.⁵ Adipose tissue macrophages are estimated to comprise up to 40% of the cells in obese adipose tissue, compared with under 10% in lean individuals,⁶ and elevated macrophage infiltration is noted in visceral compared with subcutaneous fat.⁷ Although it has been reported that preadipocytes can function as macrophage-like cells,⁸ adipose tissue macrophages are most likely bone marrow-derived circulating monocytes that subsequently infiltrated adipose tissue.⁶ Leptin and other chemokines such as monocyte chemoattractant protein-1 and leukotriene B₄⁹ contribute to this, and increasing concentrations of recombinant human leptin have been shown to result in an increased adhesion and transmigration of blood monocytes in a concentration-dependent manner,⁵ though all factors attracting immune cells into obese tissues are not yet fully understood. See Boutens et al (2016)¹⁰ for a full review of adipose tissue macrophages in obesity.

2.2 | Adipose tissue and the acute-phase response

The acute-phase response that accompanies inflammatory states is characterized by increased production of acute-phase proteins, largely released by hepatocytes. The role of these acute-phase proteins varies from mediating inflammation, to inhibiting proteases, to scavenging free radicals. IL-6 is a principle regulator for most positive acute-phase proteins and stimulates the production of serum amyloid A, c-reactive protein, α 1-acid glycoprotein, α 1-antichymotrypsin, haptoglobin, α 1-antitrypsin, fibrinogen, complement component C3, and ceruloplasmin.¹¹ Human adipose tissue can independently produce and release cytokines that are known to be major inducers of the acute-phase response, including IL-6, IL-1, IL-8, and TNF- α .¹² Both adipocytes and macrophages contribute to cytokine production, though there is some evidence that macrophages are the major source of white adipose tissue-derived IL-6 and TNF- α .⁶ Cottam et al (2004)¹³ comprehensively summarized all acute-phase reactants and inflammatory mediators observed in obesity.

IL-6 and TNF- α are most evidently increased in the serum and white adipose tissue of obese individuals,¹⁴⁻²¹ and Mohamed-Ali et al (1997)²² calculated that the whole body adipose tissue mass is responsible for the production of 15%-35% of systemic IL-6. IL-6 and TNF- α levels are also noted to decrease with weight loss,²³⁻²⁸ particularly secondary to bariatric surgery.²⁹⁻³¹ Local adipose

Summary Statements

1. To our knowledge, there is no single review summarizing the effects of obesity on commonly measured hematologic parameters and thrombotic risk, this addresses that.
2. Obesity is associated with a state of chronic low-grade inflammation and subsequently with an observed relative and sometimes absolute leukocytosis, as well as an increased risk for venous thromboembolism (VTE); its effects on iron deficiency (ID) and red blood cell counts remain unclear.
3. Recognizing the above associations may provide reassurance regarding otherwise unexplained hematologic abnormalities in obese individuals as well as prompt future studies to identify modifiable risk factors and potential therapeutic targets to prevent the development of probable obesity-associated conditions with significant morbidity and mortality, such as ID and VTE.

tissue IL-6 production is also noted to be greater in subjects with a higher waist-to-hip ratio.^{17,19,22} A higher waist-to-hip ratio often indicates increased visceral adipose tissue, which has been shown to have elevated inflammatory status, compared with subcutaneous adipose tissue.¹⁰ This supports the observation that omental adipose tissue has been shown to release 2-3 times more IL-6 than its subcutaneous counterpart.^{32,33} As IL-6 regulates CRP production, it is not surprising that CRP elevation significantly corresponds to the level of adiposity present in the body^{17,19,21,23,34-36} and also decreases with weight loss^{24-26,37,38}; this association has been shown to be stronger in women compared with men.³⁵ There is even some evidence that CRP is produced by the adipose tissue itself.³⁹

2.3 | Conclusion

In summary, in obesity, leptin and other chemokines contribute to the transmigration of bone marrow-derived monocytes into adipose tissue, with a resultant elevation of IL-6, TNF- α , and other cytokines. This subsequently results in the rise in acute-phase proteins, such as CRP, and all of this in combination accounts for the resultant chronic low-grade inflammation which actively contributes to alterations in hematologic parameters and alters the risk of thrombosis, as discussed below. While there may be a cycle at play in which bone marrow-derived monocytes are likely not only the source but also the target of pro-inflammatory signals, this is not clear from the current literature. This is something that should be further researched as it could identify additional potential therapeutic targets upstream of the acute-phase response.



3 | OBESITY AND WHITE BLOOD CELL COUNT

3.1 | Obesity and leukocytosis

A significant number of patients referred for investigation of unexplained leukocytosis have no identifiable cause of a persistent and stable leukocytosis, other than their being obese. Multiple studies have worked to elucidate the connection between leukocytosis and body mass index (BMI). We discuss these studies below, as well as the hypothesized mechanisms driving this observation.

Herishanu et al (2006)¹² analyzed patients (n = 327) referred to their outpatient hematology clinic for persistent leukocytosis and found that 15% were asymptomatic, obese, mostly middle-aged females with a mild leukocytosis (mean white blood cell count $13.05 \pm 1.44 \times 10^9/L$) characterized mostly by neutrophilia without bandemia and accompanied by elevated acute-phase reactants (CRP and erythrocyte sedimentation rate). No other recognized cause for the leukocytosis (eg, infection, inflammation, smoking, malignancy, etc) was identified, and the elevated count persisted through a mean follow-up of 45 months. In three individuals, reduction in weight was accompanied by a gradual reduction and normalization of the white blood cell count and accompanying CRP levels. To further validate this association, they performed a cross-sectional analysis of non-smoking individuals without underlying inflammatory or infectious conditions and showed that subjects found to have a leukocytosis (n = 62) had a higher BMI when compared with the population with normal white blood count ranges. Raghavan et al (2016)⁴⁰ similarly noted that white blood counts are relatively high in obese women, meaning that while mean values for total leukocyte count did not exceed accepted physiological range, there was a relative leukocytosis between categories, with a progressive numerical increase in the values of the total leukocyte count as the BMI increased. Additionally, absolute neutrophil count and differential neutrophil count showed a progressive increase with increase in BMI. The absolute lymphocyte counts likewise showed statistically significant differences between the control group and obese group, but the strength of the association appeared to be less than that observed with absolute neutrophil count. Of note, the differential lymphocyte count displayed a progressive decrease with increase in BMI, suggesting that

the increase in absolute lymphocyte counts was counterbalanced by a respectively greater increase in neutrophils. Although traditionally neutrophils have been acknowledged as key players in acute inflammation, their contribution to chronic inflammation is recently being appreciated, particularly in conditions such as chronic obstructive pulmonary disease, arthritis, neurodegenerative disease, and cardiovascular inflammation.⁴¹ Given this, the myeloid skewing observed in obesity is unsurprising. Additionally, evidence from animal models shows that high fat diets lead to myeloid hyperplasia, especially of the granulocytic compartment.⁴² Their findings are summarized in Table 1, adapted from their paper. Several other studies support the positive correlation between leukocyte count and BMI.^{21,36,43-45}

3.2 | The role of cytokines and adipokines

Peripheral blood leukocytosis is a hallmark of inflammation and in obesity is likely driven by the chronic low-grade inflammatory state discussed in detail above. Pro-inflammatory cytokines such as IL-6 and IL-8 are important inducers of leukocytosis, particularly neutrophilia, through multiple mechanisms including demargination of intravascular neutrophils, acceleration of bone marrow neutrophil release, and enhancement of bone marrow granulopoiesis.⁴⁶⁻⁵⁰

Adipokines such as leptin may also be playing a role. Wilson et al (1997)⁵¹ showed a positive, though indirect, correlation between white blood cell count and fasting plasma leptin concentrations in obese Pima Indians. Laharrague et al (2000)⁵² developed a homologous system where purified CD34+ progenitors from adult human bone marrow were treated with recombinant human leptin. They found that leptin (at high levels, but levels which are observed in obesity) significantly stimulated the appearance of granulocyte-macrophage colonies, the precursor for monocytes, and granulocytes (Figure 1) and that plasma leptin concentration was significantly correlated with leukocyte count in overweight and obese subjects. They also found that leptin concentrations were significantly higher in women than men, a difference which persisted even after controlling for BMI. Furthermore, human and mouse hematopoietic stem cells have been shown to express the leptin receptor⁵³ and a murine model has shown that treatment with a synthetic fragment of leptin resulted in a twofold increase in the number of

	Control BMI ≤ 24.9 Mean ± SD	Overweight BMI ≥ 25 - ≤ 29.9 Mean ± SD	Obese BMI ≥ 30 Mean ± SD	Met. Syndrome BMI ≥ 30 Mean ± SD
Age	42.41 ± 13.22	44.77 ± 10.41	45.95 ± 11.00	52.29 ± 10.30
BMI	22.15 ± 2.76	27.02 ± 1.44	34.29 ± 3.50	34.77 ± 4.44
WC	74.82 ± 6.44	83.92 ± 4.79	98.53 ± 9.53	101.7 ± 10.14
TLC	6590 ± 1608	7405 ± 1711	8759 ± 1882	10 110 ± 1947
ANC	3706 ± 1315	4268 ± 1269	5310 ± 1471	6148 ± 1499
ALC	2203 ± 527	2340 ± 583	2554 ± 613	2916 ± 786
PLT	265.4 ± 50.02	279.7 ± 70.34	307.8 ± 87.01	320.1 ± 66.73

TABLE 1 A summary of the mean of particularly interesting variables, across BMI categories; adapted from Raghavan et al (2016) Table/Fig-2. Met. Syndrome, metabolic syndrome; BMI, body mass index (kg/m²); WC, waist circumference (cm); TLC, total leukocyte count (/mm³); ANC, absolute neutrophil count (/mm³); ALC, absolute lymphocyte count (/mm³); PLT, platelet count (×10⁹/L)

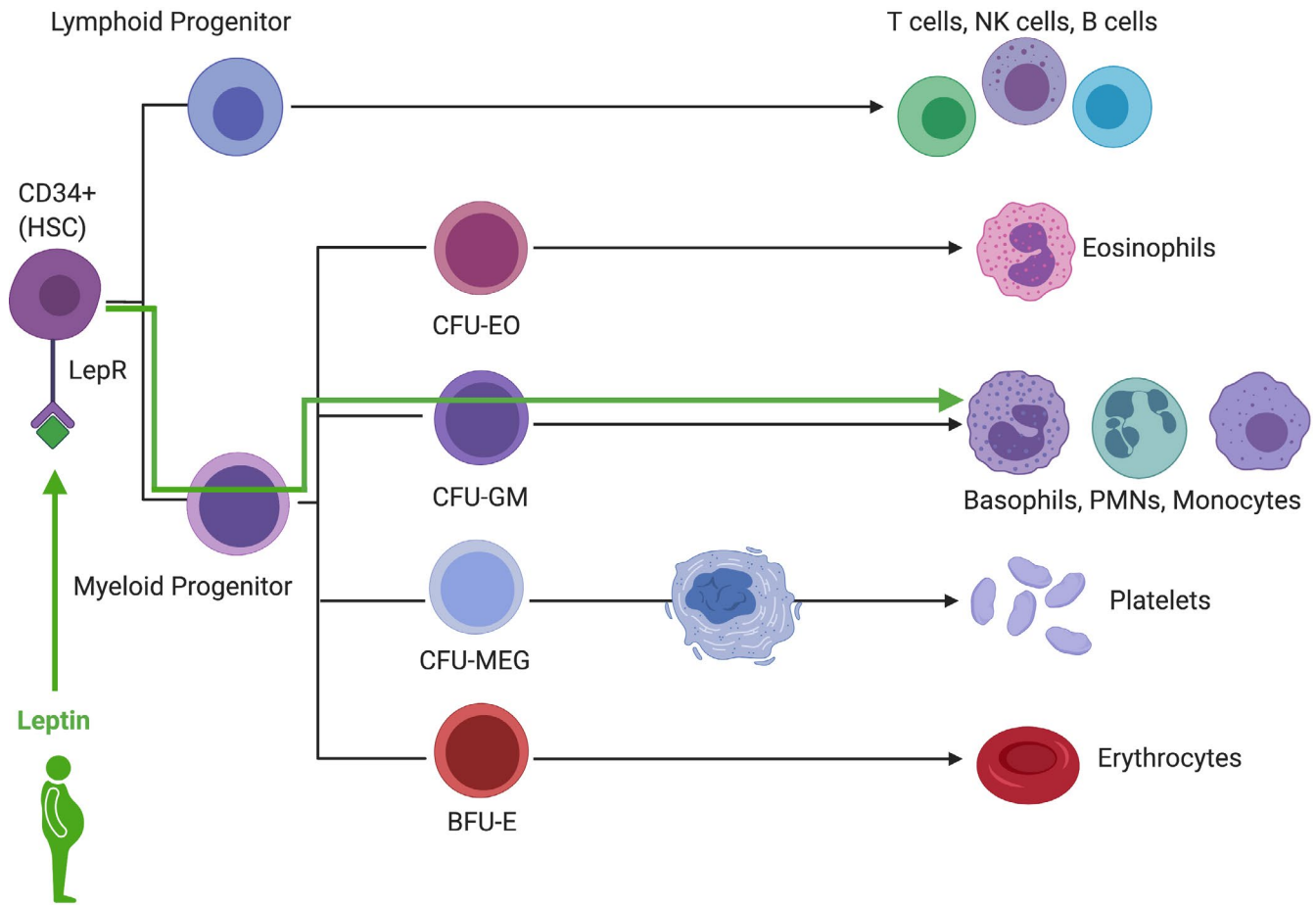


FIGURE 1 In hematopoiesis, leptin significantly stimulates the appearance of granulocyte-macrophage colonies (CFU-GM), the precursor for monocytes, and granulocytes. CFU-EO, colony-forming unit-eosinophils; CFU-GM, colony-forming unit-granulocyte, macrophage; CFU-MEG, colony-forming unit-megakaryocyte; BFU-E, burst-forming unit-erythroid; LepR, leptin receptor. All figures were created with BioRender.com [Colour figure can be viewed at [wileyonlinelibrary.com](https://onlinelibrary.wiley.com)]

hematopoietic stem cells with an associated increase in the number of granulocyte/macrophage colony-forming units produced by bone marrow cells.⁵⁴ Leptin clearly has a role in regulation of hematopoiesis through a mechanism that is multifactorial and indirect. Zhou et al (2014)⁵⁵ have shown that bone marrow mesenchymal stromal cells are leptin receptor positive and although these are defined as non-hematopoietic, as they rather differentiate into osteogenic, chondrogenic, and adipogenic progeny, they do give rise to bony ossicles that become invested with hematopoietic bone marrow as well as directly expressing hematopoietic stem cell niche factors such as stem cell factor and Cxcl12, suggesting they contribute to the organization of a hematopoietic microenvironment as important components of the hematopoietic stem cells niche. For an excellent review on the hematopoietic stem cells niche, see Sugiyama et al (2018).⁵⁶

3.3 | Sex differences

As there is a clear predominance of obesity-associated leukocytosis in women compared with men, it is important to discuss this observation. In women, even more than men, the etiology behind this

leukocytosis is likely multifactorial. Higher levels of inflammatory mediators (eg, CRP) and leptin are likely contributing, though the underlying mechanisms driving this difference remain unclear. As obesity in women is sometimes accompanied by polycystic ovarian syndrome (PCOS), this could also be contributing. Some cytokines, including IL-6 and TNF- α , are greater in women with PCOS compared with women of similar BMI.⁵⁷ Furthermore, total white cell count, due to a higher mean neutrophil count, has been found to be significantly greater in women with PCOS when compared to control subjects, despite matching for BMI and insulin resistance.^{58,59} Also, as women with obesity and PCOS are at increased risk of developing obstructive sleep apnea (OSA),^{60,61} this could be considered a contributing factor. However, while there are multiple studies that have shown a positive association between OSA and the neutrophil to lymphocyte ratio,⁶²⁻⁶⁵ a value sensitive to physiologic stress, few studies have independently associated OSA with leukocytosis, though it has been noted.⁶⁶ While we can theorize that the known elevated levels of systemic inflammatory markers in OSA (including CRP, IL-6, and TNF- α),⁶⁷ or increased sympathetic activity associated with OSA⁶⁸ would result in a leukocytosis, further studies are needed to solidify or reject this claim.



3.4 | Conclusion

In summary, the low-grade systemic inflammation that accompanies obesity results in elevated levels of cytokines (primarily IL-6 and IL-8) and adipokines such as leptin, which induce leukocytosis through multiple mechanisms, including demargination of intravascular neutrophils, acceleration of bone marrow neutrophil release, and enhancement of bone marrow granulopoiesis; leptin in particular promotes the differentiation of granulocytes from hemopoietic progenitor cells. Several studies support the positive correlation between leukocyte count and BMI, and there is a clear predominance of obesity-associated leukocytosis in women compared with men. Possible explanations include an amplified inflammatory state and associated comorbidities such as PCOS and OSA.

4 | OBESITY AND RED BLOOD CELL COUNT

4.1 | Obesity and iron deficiency

Wenzel et al (1962)⁶⁹ were the first to report lower serum iron levels in obese compared with non-obese adolescents. Although it appears counterintuitive to expect iron deficiency (ID) in the setting of calorie and nutrient excess, lower concentrations of serum iron have been observed in relation to increasing BMI for many decades. Zhao et al (2015)⁷⁰ conducted a meta-analysis of 26 cross-sectional and case-control studies, including a total of 13,393 overweight and obese individuals and 26,621 non-overweight subjects. They found that compared with the non-overweight group, the serum iron and transferrin saturation percentage were significantly different in the overweight/obese populations, with only a marginally significant difference in the serum ferritin level between the same groups. The pooled odds ratio (OR) of developing ID in the overweight/obese subjects was 1.31 (95% CI, 1.01-1.68). Importantly, the method used to diagnose ID differed among the 15 studies that were included in that analysis, with only 8 studies using ferritin-based ID diagnosis. In the studies using a ferritin-based diagnosis, the association between ID and overweight/obesity was not significant (OR 1.04, 95% CI, 0.69-1.56). In contrast, the pooled OR calculated from the 7 studies that did not use a ferritin-based ID diagnosis was significant (OR 1.49, 95% CI, 1.19-1.85); using ferritin as the sole biomarker for assessment of ID may underestimate ID, due to the elevation of serum ferritin through obesity-related chronic inflammation and the possibility that in overweight and obese individuals, ferritin is a marker of inflammation rather than iron status.⁷¹ A review by Aigner et al (2014)⁷² reported similar findings, as well as reported some improvements in iron status in the setting of weight loss.

It is important to acknowledge that many of the investigations included in the above meta-analysis and review were performed in children and adolescents, and that in adults, the results are even more complex. In their meta-analysis, Zhao et al (2015) performed a subgroup analysis which revealed no association between obesity

and ID in adults. Cheng et al (2012)⁷³ conducted a systematic review of 25 studies, looking at the association in adults only. They noted a tendency for higher ferritin and lower transferrin saturations in obese individuals, compared with their non-obese counterparts. Additional studies in non-pregnant adults (or a mean age ≥ 18), not included in either Zhao et al (2015) or Cheng et al (2012), have conflicting results. Some studies suggest an association between obesity and ID,^{71,74-78} while multiple others note no difference.⁷⁹⁻⁸²

Given the literature, a relationship between obesity and ID likely exists in children and adolescents but remains unclear in adults. The reviews and meta-analysis available are limited by the number of available studies, high heterogeneity in these studies, lack of consistent non-obese control groups, frequently uncontrolled confounders (eg, acute infection, menopausal status, oral contraceptive use, iron supplementation, obesity-related comorbidities), and lack of standardization in diagnosing ID (eg, some studies used ferritin alone, others used serum iron and transferrin saturation, very few used soluble transferrin receptor). This is particularly important given that obesity is associated with chronic low-grade inflammation which will potentially elevate ferritin and may alter the sensitivity of ferritin as an indicator of iron status; the use of additional biomarkers is something to be considered in future studies. While an association may be present between obesity and ID, future higher quality studies are needed to solidify this claim, as well as establish if a causal relationship exists.

4.2 | Obesity and red blood cell count

Given that ID can progress to iron deficiency anemia (IDA), one may expect to see an association between obesity and IDA. In the meta-analysis by Zhao et al (2015), only 4 studies of the 26 analyzed looked at the risks of developing IDA in the obese population and the results differed, with only one reporting a higher risk of IDA in their obese group; the pooled OR of IDA in overweight/obese individuals was 1.09 (95% CI, 0.57-2.10). The review by Cheng et al (2012) actually noted higher hemoglobin concentrations in the obese compared with non-obese controls. There have been additional studies not included in the above analysis which show lower levels of hemoglobin in obese compared with non-obese controls,^{21,71} while others show no correlation^{80,81} or a protective effect.^{83,84} Comorbidities associated with obesity, such as OSA or obesity hypoventilation syndrome, may be leading to a secondary polycythemia. Regardless, future studies are needed to look into this possible association.

4.3 | Possible mechanisms driving iron deficiency

In children and adolescents, a possible explanation for the observed ID is higher iron demands, in the setting of accelerated body growth.⁸⁵ Poor dietary intake may also be playing a role,^{86,87} though multiple studies have shown that this is unlikely.⁸⁸⁻⁹¹ Another theory is that increased iron requirements are due to a larger blood volume



which increases iron requirements and confounds iron biomarkers by hemodilution.^{92,93} The largest body of evidence actually points toward the chronic inflammatory state associated with obesity driving the observation, with hepcidin, and its role in iron homeostasis being the main player.

Iron homeostasis is regulated through hepcidin, a small peptide hormone largely produced by the liver, which controls the activity of ferroportin-1, an iron exporter. Increased serum levels of hepcidin result in reduced dietary iron absorption through downregulation of the exporter and increased iron sequestration within enterocytes, hepatocytes, and iron-storing macrophages, leading to reduced iron bioavailability^{94,95} (Figure 2). It has been shown that obese subjects demonstrate impaired ability to absorb iron.^{76,96-98}

Hepcidin expression correlates with inflammation.⁹⁹ Given that obesity is a state of chronic low-grade inflammation, it comes as no surprise that hepcidin expression has been shown to be increased in obese individuals.^{89,100} This increase in hepcidin is likely driven by cytokines, with significant data pointing to IL-6 as a main driver.^{99,101-103} There is also *in vitro* evidence that leptin also stimulates hepcidin expression.¹⁰⁴ Additionally, adipose tissue has been shown to express hepcidin itself, marking hepcidin as an adipokine,¹⁰² though this has been questioned.¹⁰⁵ It should also be noted that not all studies agree that hepcidin plays a role at all.¹⁰⁶

4.4 | Conclusion

In summary, a link between ID and obesity likely exists in children and adolescents but the association remains unclear in adults; a link between obesity and anemia remains even less certain. Given current limited studies of high heterogeneity and with conflicting results, future studies are needed to further assess this. Special care should be taken to include a non-obese control group, to include additional biomarkers of iron status which may not be as easily altered

by the chronic inflammatory state accompanying obesity as is ferritin, and to control for confounders of iron status such as acute infection, menopausal status, and iron supplementation. Driving this possible association is the chronic inflammatory state associated with obesity, which through the secretion of cytokines such as IL-6, results in increased hepcidin expression and subsequent impaired duodenal absorption of iron. Leptin may also be playing a role in increased hepcidin expression and hepcidin itself may also be secreted by adipose tissue.

5 | OBESITY, PLATELETS COUNT, AND THROMBOSIS

5.1 | Obesity and platelet count

Obesity is also associated with increased platelet counts. Platelet counts have been found to be increased in obese non-diabetic rats¹⁰⁷ as well as obese individuals, when compared to non-obese controls,^{12,21,40} though the correlation has sometimes only been noted in women.¹⁰⁸ This correlation is further supported by observed reductions in platelet count in the setting of weight loss following bariatric surgery.¹⁰⁹ IL-6 is likely the main driver, working synergistically with other interleukins to increase thrombopoietin and subsequently stimulate megakaryocytopoiesis.¹¹⁰⁻¹¹⁵ Visceral adipose tissue itself may also be an additional source of thrombopoietin.¹¹⁶

5.2 | Obesity and thrombosis

There is substantial evidence that obesity as a pro-inflammatory condition, promotes a prothrombotic state, supporting arterial and venous thrombosis. A meta-analysis by Ageno et al (2008)¹¹⁷ on the influence of obesity on the risk of first episode of venous thromboembolism

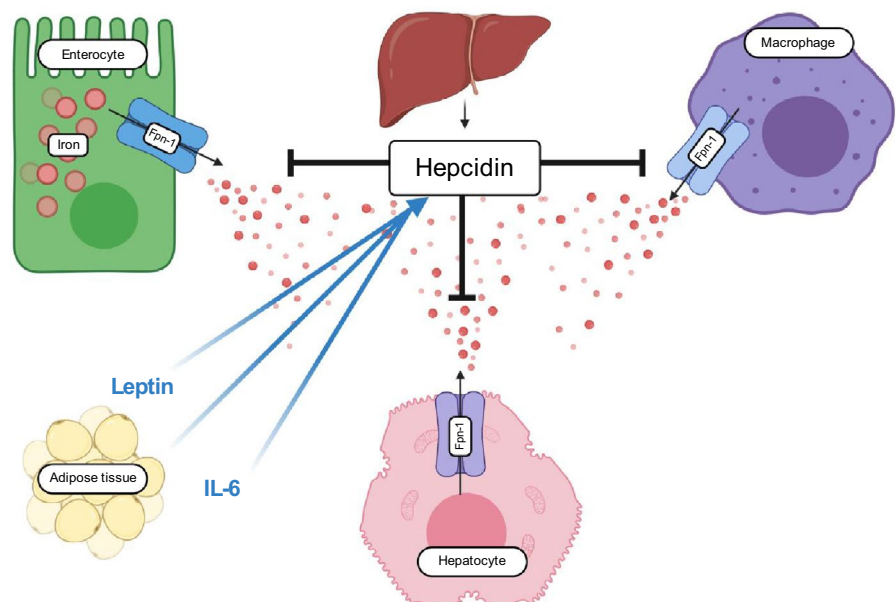


FIGURE 2 Hepcidin expression has been shown to be increased in obese individuals and correlates with inflammation, mainly driven by IL-6. Leptin also stimulates hepcidin expression. Additionally, adipose tissue has been shown to express hepcidin itself, marking hepcidin as an adipokine. Fpn-1, ferroportin-1. All figures were created with BioRender.com [Colour figure can be viewed at wileyonlinelibrary.com]

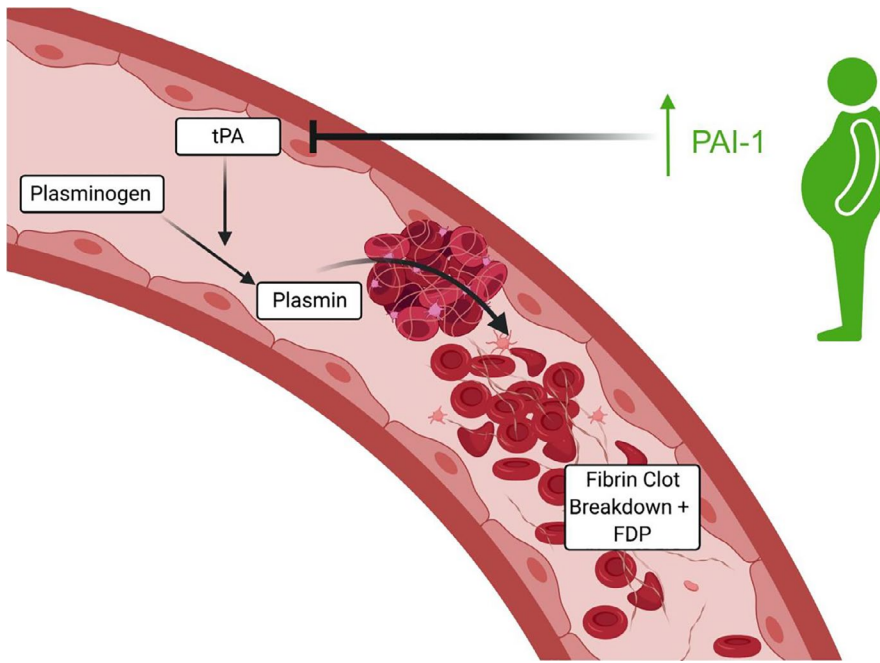


FIGURE 3 PAI-1, which blocks the activation of fibrinolysis, correlates with BMI and has been shown to be produced in adipose tissue. PAI-1, Plasminogen activator inhibitor-1; tPA, tissue plasminogen activator; FDP, fibrin degradation products. All figures were created with BioRender.com [Colour figure can be viewed at wileyonlinelibrary.com]

(VTE) estimated an overall odds ratio for VTE of 2.33 (95% CI, 1.68-3.24). Tsai et al (2002),¹¹⁸ included in that meta-analysis, found an even higher hazards ratio of 2.7 for patients with severe obesity (BMI ≥ 40 kg/m²). Di Minno et al (2005)¹¹⁹ reported the OR of obesity for deep vein thrombosis to be 1.97 (95% CI, 1.4-2.78) for males and 2.29 (95% CI, 1.85-2.84) for females. There are many additional studies not included in the meta-analysis but with similar observations.¹²⁰⁻¹²³ Borch et al (2010)¹²⁴ and Hansson et al (1999)¹²⁵ also noted associations with abdominal obesity and VTE. Eichinger et al (2008)¹²⁶ reported obesity as a risk factor for VTE recurrence, a risk which may be even higher in women compared with men.¹²⁷ In general, clinically men and women appear to experience different thrombotic phenotypes. As noted above, obese women appear to be at higher risk for VTE and data have shown, though not exclusive to obese individuals, that women appear to be at higher risk for stroke, while men are more likely to be affected by cardiovascular disease.¹²⁸ The relative protection of women against atherosclerosis before menopause is poorly understood with some thought that a more beneficial lipid profile contributes or that there is some protection conferred by sex hormones.¹²⁹

The biological mechanisms underlying this observed connection are multifactorial and the relationship is confounded by a frequently accompanied metabolic syndrome and associated lifestyle factors, whose individual components (hyperinsulinemia, hypertriglyceridemia, hypertension) have associations with thrombosis by mechanisms independent of obesity. However, despite this, there is notable and consistent evidence of an association between obesity and thrombosis through damage to the venous endothelial layer, increased platelet reactivity, enhanced coagulation, and impaired fibrinolysis, all discussed below and summarized in impressive reviews by Vilahur et al (2017)¹³⁰ and Schafer & Konstantinides (2011).¹³¹ The physical aspects of an obese body habitus may also contribute to the risk by promoting limited venous return through chronically raised intra-abdominal pressure and decreased blood velocity through the

femoral vein¹³²; inactivity and poor gait would likely have a compounding effect.¹³³

5.3 | The role of leptin in thrombosis

Leptin is a suspected driver of these prothrombotic changes through multiple mechanisms. There are significant data surrounding leptin-mediated promotion of ADP-induced platelet aggregation,¹³⁴⁻¹³⁷ with the inhibition of leptin via a neutralizing antibody being protective against arterial and venous thrombosis in mice.¹³⁸ However, Ozata et al (2001)¹³⁹ found no significant increase in platelet aggregation, even at high concentrations of leptin in obese subjects or controls. Other studies have also reported a reduction in the pro-aggregatory effects of leptin from obese individuals, suggesting platelet resistance to leptin in obesity.^{140,141} P-selectin, a significant player in platelet aggregation, has been shown to have leptin-mediated increased expression on human platelets *in vitro*.¹⁴² However, this observation was not consistent and is without correlation *in vivo*. Less convincing, but also noted in the literature, is a contribution to elevated levels of tissue plasminogen activator (tPA) antigen,¹⁴³ which would promote thrombosis. Leptin also has been shown to induce elevated levels of plasminogen activator inhibitor-1 (PAI-1),¹⁴⁴ which at higher concentrations is known to inhibit fibrinolysis and consequently promote a thrombotic state. Lastly, leptin is associated with increased factor levels, as noted below.

5.4 | Obesity is associated with elevated levels of coagulation factors and von Willebrand factor

BMI has been shown to positively correlate with elevated factor levels and markers of fibrinolysis (fibrinogen, factor VII, factor VIII,



factor IX, PAI-1, tPA antigen),^{120,145,146} with reductions in thrombin, tissue factor, PAI-1, and (prothrombin fragment 1.2) noted in weight loss.¹⁴⁷ Plasma levels of tissue factor, a significant driver of thrombus formation, are increased in obese subjects compared with healthy controls.¹⁴⁸ Leptin has been shown to increase tissue factor in humans,^{149,150} and elevated levels of circulating tissue factor have been recognized as a contributor to the prothrombotic tendency of patients with high-grade obesity.³¹ Levels of fibrinogen, von Willebrand factor, and factors VII and VIII have all been found to be increased in obesity, with abdominal obesity noted to have a particular association.^{146,151} Although elevations in factor levels are strongly associated with increased risk of VTE, one study did show that adjusting for clotting factor levels did not affect the risk estimate for obesity and VTE¹²⁰; we did not find other studies that commented on this possibility. It remains unclear whether these factors are merely biomarkers of inflammation, or direct contributors to thrombosis and this is an area that would benefit from further research.

5.5 | Obesity impairs fibrinolysis

There is evidence tying PAI-1, which blocks the activation of fibrinolysis by inhibiting tPA (Figure 3), to obesity-associated thrombosis, particularly through the metabolic syndrome and its interactions with insulin.¹⁵² PAI-1 levels correlate with BMI¹⁴⁶ and body fat distribution plays a role, with an association noted between waist-to-hip ratio and PAI-1 levels.^{151,153} It has also been shown to be produced in adipose tissue^{154,155} and levels have been shown to decrease with weight loss.^{156,157} As stated above, leptin may be a player in PAI-1 over expression, but TNF- α and transforming growth factor- β , which is produced in visceral fat, have also been proposed to be involved in the regulation of PAI-1 expression in adipose tissue.¹³³ CRP may also participate by enhancing the expression of PAI-1 in human endothelial cells.¹⁵⁸⁻¹⁶⁰ Counter to this, tPA expression has also been associated with BMI,¹⁴⁶ with noted reductions following weight loss.^{153,161}

5.6 | Obesity promotes platelet hyperactivity

Platelet activation is also a key component of thrombogenesis, and platelet hyperactivity has been noted in obese individuals. Particularly, android obesity (abdominal obesity characterized by increased waist-to-hip ratio) has been found to have higher levels of platelet activation, as reflected by urinary excretion of the major metabolite of TXA₂, 11-dehydro-TxB₂, when compared to gynoid obese (gluteal-femoral obesity) women and non-obese women.¹⁶² P-selectin expression is a marker of platelet activation, mediating the rolling of platelets on activated endothelial cells and promoting thrombogenesis by stabilizing initial GPIIb/IIIa-fibrinogen connections, permitting the development of large stable platelet aggregates in a venous thrombus. Epidemiological evidence has shown that platelet activation markers such as CD40L and P-selectin are increased in obesity and may reflect persistent in vivo platelet and endothelial activation,¹⁶³ with increased P-selectin

expression noted in genetically and diet-induced obese mice.¹⁶⁴ CRP levels have been shown to increase P-selectin expression and platelet adhesion.¹⁶⁵ Mean platelet volume, an element of platelet function, is an emerging risk factor for thrombotic disease^{166,167} and has positively correlated with BMI.¹⁶⁸ Platelet-derived microparticles are considered an index of platelet activation and have pro-inflammatory and pro-thrombotic effects. These too may be playing a role, as circulating levels of platelet-derived microparticles are elevated in obese subjects in comparison with age-matched non-obese subjects.¹⁵³ Lastly, platelets from obese subjects have been found to retain greater reactivity after suppression by aspirin, compared with non-obese individuals after aspirin therapy.^{169,170} These effects are summarized in Figure 4.

5.7 | Obesity promotes endothelial dysfunction

Obese individuals exhibit endothelial dysfunction, and this is likely induced by the continuous exposure to inflammatory stimuli and oxidative damage. It has been shown that endothelial cells exposed to cytokines secreted by adipose tissue from obese individuals have enhanced expression of endothelial adhesions molecules.¹⁷¹ Leptin again may be contributing, promoting oxidative stress; leptin has been shown to increase levels of markers of endothelial cell dysfunction and activation.¹⁷² Individual components of the metabolic syndrome (ie, hyperlipidemia) which often accompany obesity also contribute to activate the endothelial layer by enhancing endothelin-1 production, a vasoconstrictor, and pro-inflammatory peptide, and conversely impairing nitric oxide and endothelium-derived hyperpolarizing factor-related vasodilation leading to endothelial dysfunction.¹³⁰

5.8 | Conclusion

In summary, obesity is associated with increased platelet counts. IL-6 is likely a main contributor to this phenomenon, increasing thrombopoietin and subsequently stimulating megakaryocytopoiesis, resulting in thrombocytosis. There is also substantial evidence that obesity as a pro-inflammatory condition significantly increases the risk of VTE. The mechanisms underlying this are multifactorial and confounded by lifestyle factors, as well as the individual components of a frequently accompanying metabolic syndrome. However, despite this, there is extensive literature discussing elevated factor levels, impaired fibrinolysis, platelet hyperactivity, and endothelial dysfunction, all driven by obesity and its associated inflammatory state; encouragingly, many of these abnormalities improve with weight loss.

6 | CONCLUSION

There is a sizeable amount of data demonstrating that obesity is a state of chronic low-grade inflammation. Future studies to further understand the underlying mechanisms would be helpful;

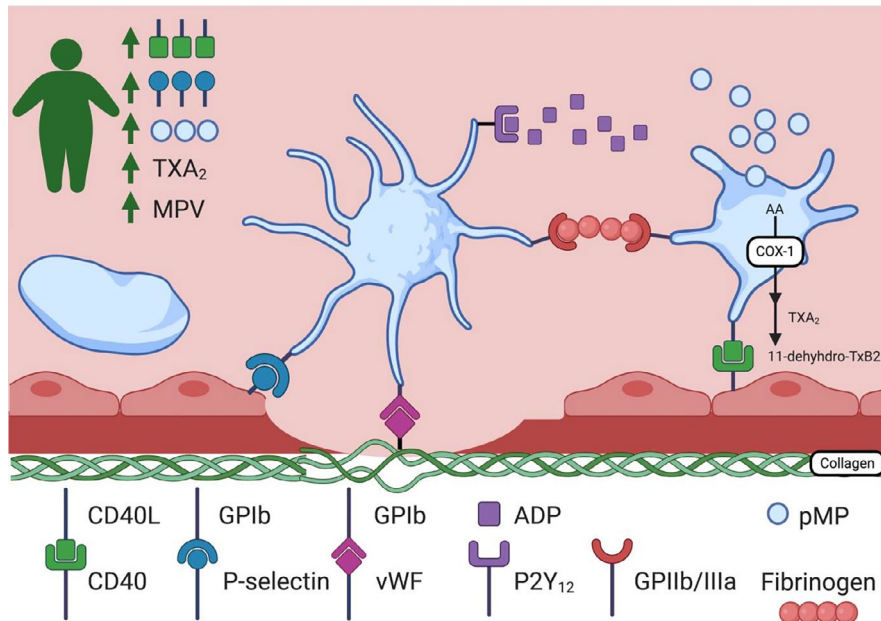


FIGURE 4 Platelet hyperactivity has been noted in obese individuals, as reflected by urinary excretion of 11-dehydro-TxB2, the major metabolite of TXA2. BMI has been associated with increased levels of CD40-L and P-selectin, as well as positively correlated with mean platelet volume, an emerging risk factor for thrombotic disease, and pMPs, markers of platelet activation. GPIb, Glycoprotein Ib; vWF, von Willebrand factor; ADP, Adenosine diphosphate; GPIIb/IIIa, glycoprotein IIb/IIIa; pMP, platelet-derived microparticles; MPV, mean platelet volume; TXA2, Thromboxane A2; AA, arachidonic acid; COX-1, Cyclooxygenase-1; 11-dehydro-TXB2, 11-Dehydrothromboxane B2. All figures were created with BioRender.com [Colour figure can be viewed at wileyonlinelibrary.com]

particularly, future investigations of leptin would be of high interest, given the high suspicion that it is involved in many of the perturbances to hematologic parameters and thrombosis. Also, future studies looking to unmask the underlying mechanisms driving an even higher inflammatory state in women compared with men would be important in identifying risk factors that could be intervened on. There is an observed relative, and sometimes absolute, leukocytosis driven by this inflammatory state. Recognizing this association may prompt clinicians to avoid unnecessary and extensive work-ups by providing reassurance regarding an unexplained, stable and mild, neutrophilic leukocytosis in obese individuals who have the demographic features present in the above studies (eg, middle-aged females). The association between obesity, ID, and red blood cell counts remains uncertain and future well designed studies are needed to accept or reject this association, as well as to establish if a causal relationship exists. Given the accompanying state of chronic inflammation, identifying abnormalities of iron metabolism is particularly challenging in the obese, but this presents an opportunity to use and validate additional and novel biomarkers of iron status in future investigations and to standardize the methods used to diagnose ID in obese individuals. Also, recognizing that in obesity there is impaired iron absorption via the gut, making oral supplementation insufficient, and encourages future studies to further explore and identify underlying mechanisms (eg, hepcidin) as potential therapeutic targets that could prevent the development of ID in the obese. Lastly, there is sufficient evidence associating obesity with VTE, and some evidence that weight loss resolves

some of the underlying mechanistic abnormalities. Considering that the relative risk of first and recurrent VTE associated with obesity are comparable to those for other established risk factors such as hereditary thrombophilia and estrogen therapy,¹⁷³ and given the high morbidity and mortality that VTE can carry, this presents an additional opportunity for clinicians to more vigorously encourage weight loss among their obese patients. This also further incentivizes future research in the area, particularly with regard to anticoagulation and anti-inflammatory therapies to prevent thrombosis in obesity.

7 | Conflict-of-interest

JJS is a consultant for Aronora, Inc The remaining authors declare no potential conflict of interest.

ACKNOWLEDGMENT

J Shatzel is supported by the National Institutes of Health, National Heart, Lung, and Blood Institute (HL151367)

DATA AVAILABILITY STATEMENT

Data sharing is not applicable to this article as no new data were created or analyzed in this study.

ORCID

Johanna C. Purdy  <https://orcid.org/0000-0002-7978-2345>



REFERENCES

- Centers for Disease Control and Prevention. Adult obesity facts. 2020, February 27; <https://www.cdc.gov/obesity/data/adult.html>
- Ward ZJ, Bleich SN, Cradock AL, et al. Projected U.S. state-level prevalence of adult obesity and severe obesity. *N Engl J Med*. 2019;381(25):2440-2450.
- Fantuzzi G. Adipose tissue, adipokines, and inflammation. *J Allergy Clin Immunol*. 2005;115:911-919.
- Gregor MF, Hotamisligil GS. Inflammatory mechanisms in obesity. *Annu Rev Immunol*. 2011;29:415-445.
- Curat CA, Miranville A, Sengenès C, et al. From blood monocytes to adipose tissue-resident macrophages: induction of diapedesis by human mature adipocytes. *Diabetes*. 2004;53(5):1285-1292.
- Weisberg SP, McCann D, Desai M, Rosenbaum M, Leibel RL, Ferrante AW Jr. Obesity is associated with macrophage accumulation in adipose tissue. *J Clin Invest*. 2003;112(12):1796-1808.
- Harman-Boehm I, Bluher M, Redel H, et al. Macrophage infiltration into omental versus subcutaneous fat across different populations: effect of regional adiposity and the comorbidities of obesity. *J Clin Endocrinol Metab*. 2007;92(6):2240-2247.
- Cousin B, Munoz O, Andre M, et al. A role for preadipocytes as macrophage-like cells. *FASEB J*. 1999;13(2):305-312.
- Osborn O, Olefsky JM. The cellular and signaling networks linking the immune system and metabolism in disease. *Nat Med*. 2012;18(3):363-374.
- Boutens L, Stienstra R. Adipose tissue macrophages: going off track during obesity. *Diabetologia*. 2016;59(5):879-894.
- Banks RE, Forbes MA, Storr M, et al. The acute phase protein response in patients receiving subcutaneous IL-6. *Clin Exp Immunol*. 1995;102(1):217-223.
- Herishanu Y, Rogowski O, Polliack A, Marilus R. Leukocytosis in obese individuals: possible link in patients with unexplained persistent neutrophilia. *Eur J Haematol*. 2006;76(6):516-520.
- Cottam DR, Mattar SG, Barinas-Mitchell E, et al. The chronic inflammatory hypothesis for the morbidity associated with morbid obesity: implications and effects of weight loss. *Obes Surg*. 2004;14(5):589-600.
- Hotamisligil GS, Shargill NS, Spiegelman BM. Adipose expression of tumor necrosis factor- α : direct role in obesity-linked insulin resistance. *Science*. 1993;259(5091):87-91.
- Yudkin JS, Stehouwer CD, Emeis JJ, Coppack SW. C-reactive protein in healthy subjects: associations with obesity, insulin resistance, and endothelial dysfunction: a potential role for cytokines originating from adipose tissue? *Arterioscler Thromb Vasc Biol*. 1999;19(4):972-978.
- Yudkin JS, Kumari M, Humphries SE, Mohamed-Ali V. Inflammation, obesity, stress and coronary heart disease: is interleukin-6 the link? *Atherosclerosis*. 2000;148(2):209-214.
- Park HS, Park JY, Yu R. Relationship of obesity and visceral adiposity with serum concentrations of CRP, TNF- α and IL-6. *Diabetes Res Clin Pract*. 2005;69(1):29-35.
- Roytblat L, Rachinsky M, Fisher A, et al. Raised interleukin-6 levels in obese patients. *Obes Res*. 2000;8(9):673-675.
- Pou KM, Massaro JM, Hoffmann U, et al. Visceral and subcutaneous adipose tissue volumes are cross-sectionally related to markers of inflammation and oxidative stress: the Framingham Heart Study. *Circulation*. 2007;116(11):1234-1241.
- Katsuki A, Sumida Y, Murashima S, et al. Serum levels of tumor necrosis factor- α are increased in obese patients with non-insulin-dependent diabetes mellitus. *J Clin Endocrinol Metab*. 1998;83(3):859-862.
- Farhangi MA, Keshavarz SA, Eshraghian M, Ostadrahimi A, Saboor-Yaraghi AA. White blood cell count in women: relation to inflammatory biomarkers, haematological profiles, visceral adiposity, and other cardiovascular risk factors. *J Health Popul Nutr*. 2013;31(1):58-64.
- Mohamed-Ali V, Goodrick S, Rawesh A, et al. Subcutaneous adipose tissue releases interleukin-6, but not tumor necrosis factor- α , in vivo. *J Clin Endocrinol Metab*. 1997;82(12):4196-4200.
- Bastard JP, Jardel C, Bruckert E, et al. Elevated levels of interleukin 6 are reduced in serum and subcutaneous adipose tissue of obese women after weight loss. *J Clin Endocrinol Metab*. 2000;85(9):3338-3342.
- Ziccardi P, Nappo F, Giugliano G, et al. Reduction of inflammatory cytokine concentrations and improvement of endothelial functions in obese women after weight loss over one year. *Circulation*. 2002;105(7):804-809.
- Nicklas BJ, Ambrosius W, Messier SP, et al. Diet-induced weight loss, exercise, and chronic inflammation in older, obese adults: a randomized controlled clinical trial. *Am J Clin Nutr*. 2004;79(4):544-551.
- Esposito K, Pontillo A, Di Palo C, et al. Effect of weight loss and lifestyle changes on vascular inflammatory markers in obese women: a randomized trial. *JAMA*. 2003;289(14):1799-1804.
- Dandona P, Weinstock R, Thusu K, Abdel-Rahman E, Aljada A, Wadden T. Tumor necrosis factor- α in sera of obese patients: fall with weight loss. *J Clin Endocrinol Metab*. 1998;83(8):2907-2910.
- Kern PA, Saghizadeh M, Ong JM, Bosch RJ, Deem R, Simsolo RB. The expression of tumor necrosis factor in human adipose tissue. regulation by obesity, weight loss, and relationship to lipoprotein lipase. *J Clin Invest*. 1995;95(5):2111-2119.
- Swarbrick MM, Stanhope KL, Austrheim-Smith IT, et al. Longitudinal changes in pancreatic and adipocyte hormones following Roux-en-Y gastric bypass surgery. *Diabetologia*. 2008;51(10):1901-1911.
- Lin E, Phillips LS, Ziegler TR, et al. Increases in adiponectin predict improved liver, but not peripheral, insulin sensitivity in severely obese women during weight loss. *Diabetes*. 2007;56(3):735-742.
- Kopp CW, Kopp HP, Steiner S, et al. Weight loss reduces tissue factor in morbidly obese patients. *Obes Res*. 2003;11(8):950-956.
- Fried SK, Bunkin DA, Greenberg AS. Omental and subcutaneous adipose tissues of obese subjects release interleukin-6: depot difference and regulation by glucocorticoid. *J Clin Endocrinol Metab*. 1998;83(3):847-850.
- Fain JN, Madan AK, Hiler ML, Cheema P, Bahouth SW. Comparison of the release of adipokines by adipose tissue, adipose tissue matrix, and adipocytes from visceral and subcutaneous abdominal adipose tissues of obese humans. *Endocrinology*. 2004;145(5):2273-2282.
- Visser M, Bouter LM, McQuillan GM, Wener MH, Harris TB. Elevated C-Reactive Protein Levels in Overweight and Obese Adults. *JAMA*. 1999;282(22):2131-2135.
- Festa A, D'Agostino R Jr, Williams K, et al. The relation of body fat mass and distribution to markers of chronic inflammation. *Int J Obes Relat Metab Disord*. 2001;25(10):1407-1415.
- Ford ES. Body mass index, diabetes, and C-reactive protein among U.S. adults. *Diabetes Care*. 1999;22(12):1971-1977.
- Tchernof A, Nolan A, Sites CK, Ades PA, Poehlman ET. Weight loss reduces C-reactive protein levels in obese postmenopausal women. *Circulation*. 2002;105(5):564-569.
- Vazquez LA, Pazos F, Berrazueta JR, et al. Effects of changes in body weight and insulin resistance on inflammation and endothelial function in morbid obesity after bariatric surgery. *J Clin Endocrinol Metab*. 2005;90(1):316-322.
- Calabro P, Chang DW, Willerson JT, Yeh ET. Release of C-reactive protein in response to inflammatory cytokines by human adipocytes: linking obesity to vascular inflammation. *J Am Coll Cardiol*. 2005;46(6):1112-1113.



40. Raghavan V, Gunasekar D, Rao KR. Relevance of haematologic parameters in obese women with or without metabolic syndrome. *J Clin Diagn Res.* 2016;10(5):11-16.
41. Soehnlein O, Steffens S, Hidalgo A, Weber C. Neutrophils as protagonists and targets in chronic inflammation. *Nat Rev Immunol.* 2017;17(4):248-261.
42. do Carmo LS, Rogero MM, Paredes-Gamero EJ, et al. A high-fat diet increases interleukin-3 and granulocyte colony-stimulating factor production by bone marrow cells and triggers bone marrow hyperplasia and neutrophilia in Wistar rats. *Exp Biol Med (Maywood).* 2013;238(4):375-384.
43. Julius S, Egan BM, Kaciroti NA, Nesbitt SD, Chen AK, TROPHY investigators. In prehypertension leukocytosis is associated with body mass index but not with blood pressure or incident hypertension. *J Hypertens.* 2014;32(2):251-259.
44. Pratley RE, Wilson C, Bogardus C. Relation of the white blood cell count to obesity and insulin resistance: effect of race and gender. *Obes Res.* 1995;3(6):563-571.
45. Nanji AA, Freeman JB. Relationship between body weight and total leukocyte count in morbid obesity. *Am J Clin Pathol.* 1985;84(3):346-347.
46. Ulich TR, del Castillo J, Guo KZ. In vivo hematologic effects of recombinant interleukin-6 on hematopoiesis and circulating numbers of RBCs and WBCs. *Blood.* 1989;73(1):108-110.
47. Suwa T, Hogg JC, English D, Van Eeden SF. Interleukin-6 induces demargination of intravascular neutrophils and shortens their transit in marrow. *Am J Physiol Heart Circ Physiol.* 2000;279(6):H2954-2960.
48. Witko-Sarsat V, Rieu P, Descamps-Latscha B, Lesavre P, Halbwachs-Mecarelli L. Neutrophils: molecules, functions and pathophysiological aspects. *Lab Invest.* 2000;80(5):617-653.
49. van Eeden SF, Terashima T. Interleukin 8 (IL-8) and the release of leukocytes from the bone marrow. *Leuk Lymphoma.* 2000;37(3-4):259-271.
50. Pini M, Rhodes DH, Fantuzzi G. Hematological and acute-phase responses to diet-induced obesity in IL-6 KO mice. *Cytokine.* 2011;56(3):708-716.
51. Wilson CA, Bekele G, Nicolson M, Ravussin E, Pratley RE. Relationship of the white blood cell count to body fat: role of leptin. *Br J Haematol.* 1997;99(2):447-451.
52. Laharrague P, Oppert JM, Brousset P, et al. High concentration of leptin stimulates myeloid differentiation from human bone marrow CD34+ progenitors: potential involvement in leukocytosis of obese subjects. *Int J Obes Relat Metab Disord.* 2000;24(9):1212-1216.
53. Severe N, Karabacak NM, Gustafsson K, et al. Stress-induced changes in bone marrow stromal cell populations revealed through single-cell protein expression mapping. *Cell Stem Cell.* 2019;25(4):570-583 e577.
54. Dias CC, Nogueira-Pedro A, Barbosa CM, et al. Hematopoietic stem cell expansion caused by a synthetic fragment of leptin. *Peptides.* 2013;50:24-27.
55. Zhou BO, Yue R, Murphy MM, Peyer JG, Morrison SJ. Leptin-receptor-expressing mesenchymal stromal cells represent the main source of bone formed by adult bone marrow. *Cell Stem Cell.* 2014;15(2):154-168.
56. Sugiyama T, Omatsu Y, Nagasawa T. Niches for hematopoietic stem cells and immune cell progenitors. *Int Immunol.* 2019;31(1):5-11.
57. Tarkun I, Cetinarlan B, Turemen E, Canturk Z, Biyikli M. Association between circulating tumor necrosis factor-alpha, interleukin-6, and insulin resistance in normal-weight women with polycystic ovary syndrome. *Metab Syndr Relat Disord.* 2006;4(2):122-128.
58. Phelan N, O'Connor A, Kyaw Tun T, et al. Leucocytosis in women with polycystic ovary syndrome (PCOS) is incompletely explained by obesity and insulin resistance. *Clin Endocrinol (Oxf).* 2013;78(1):107-113.
59. Herlihy AC, Kelly RE, Hogan JL, O'Connor N, Farah N, Turner MJ. Polycystic ovary syndrome and the peripheral blood white cell count. *J Obstet Gynaecol.* 2011;31(3):242-244.
60. Kahal H, Kyrou I, Tahrani AA, Randeve HS. Obstructive sleep apnoea and polycystic ovary syndrome: a comprehensive review of clinical interactions and underlying pathophysiology. *Clin Endocrinol (Oxf).* 2017;87(4):313-319.
61. Kahal H, Kyrou I, Uthman OA, et al. The prevalence of obstructive sleep apnoea in women with polycystic ovary syndrome: a systematic review and meta-analysis. *Sleep Breath.* 2019;24(1):339-350.
62. Bozkus F, Dikmen N, Samur A, Bilal N, Atilla N, Arpag H. Does the neutrophil-to-lymphocyte ratio have any importance between subjects with obstructive sleep apnea syndrome with obesity and without obesity? *Tuberk Toraks.* 2018;66(1):8-15.
63. Sunbul M, Sunbul EA, Kanar B, et al. The association of neutrophil to lymphocyte ratio with presence and severity of obstructive sleep apnea. *Bratisl Lek Listy.* 2015;116(11):654-658.
64. Altintas N, Cetinoglu E, Yuceede M, et al. Neutrophil-to-lymphocyte ratio in obstructive sleep apnea; a multi center, retrospective study. *Eur Rev Med Pharmacol Sci.* 2015;19(17):3234-3240.
65. Oyama J, Nagatomo D, Yoshioka G, et al. The relationship between neutrophil to lymphocyte ratio, endothelial function, and severity in patients with obstructive sleep apnea. *J Cardiol.* 2016;67(3):295-302.
66. Geovanini GR, Wang R, Weng J, et al. Elevations in neutrophils with obstructive sleep apnea: the multi-ethnic study of atherosclerosis (MESA). *Int J Cardiol.* 2018;257:318-323.
67. Nadeem R, Molnar J, Madbouly EM, et al. Serum inflammatory markers in obstructive sleep apnea: a meta-analysis. *J Clin Sleep Med.* 2013;9(10):1003-1012.
68. Mansukhani MP, Kara T, Caples SM, Somers VK. Chemoreflexes, sleep apnea, and sympathetic dysregulation. *Curr Hypertens Rep.* 2014;16(9):476.
69. Wenzel BJ, Stults HB, Mayer J. Hypoferraemia in obese adolescents. *Lancet.* 1962;2(7251):327-328.
70. Zhao L, Zhang X, Shen Y, Fang X, Wang Y, Wang F. Obesity and iron deficiency: a quantitative meta-analysis. *Obes Rev.* 2015;16(12):1081-1093.
71. Khan A, Khan WM, Ayub M, Humayun M, Haroon M. Ferritin is a marker of inflammation rather than iron deficiency in overweight and obese people. *J Obes.* 2016;2016:1937320.
72. Aigner E, Feldman A, Datz C. Obesity as an emerging risk factor for iron deficiency. *Nutrients.* 2014;6(9):3587-3600.
73. Cheng HL, Bryant C, Cook R, O'Connor H, Rooney K, Steinbeck K. The relationship between obesity and hypoferraemia in adults: a systematic review. *Obes Rev.* 2012;13(2):150-161.
74. Monteiro AM, Fernandes V, Matta-Coelho C, et al. Iron deficiency and obesity - Are we diagnosing with appropriate Indicators? *Acta Med Port.* 2018;31(9):478-482.
75. Shekarriz R, Vaziri MM. Iron profile and inflammatory status of overweight and obese women in sari, North of Iran. *Int J Hematol Oncol Stem Cell Res.* 2017;11(2):108-113.
76. Herter-Aeberli I, Thankachan P, Bose B, Kurpad AV. Increased risk of iron deficiency and reduced iron absorption but no difference in zinc, vitamin A or B-vitamin status in obese women in India. *Eur J Nutr.* 2016;55(8):2411-2421.
77. Asghari G, Khalaj A, Ghadimi M, et al. Prevalence of micronutrient deficiencies prior to bariatric surgery: tehran obesity treatment study (TOTS). *Obes Surg.* 2018;28(8):2465-2472.
78. Neymotin F, Sen U. Iron and obesity in females in the United States. *Obesity (Silver Spring).* 2011;19(1):191-199.



79. Adib Rad H, Sefidgar SAA, Tamadoni A, et al. Obesity and iron-deficiency anemia in women of reproductive age in northern Iran. *J Educ Health Promot.* 2019;8:115.
80. Arshad M, Jaberian S, Pazouki A, Riazi S, Rangraz MA, Mokhber S. Iron deficiency anemia and megaloblastic anemia in obese patients. *Rom J Intern Med.* 2017;55(1):3-7.
81. Wang C, Guan B, Yang W, Yang J, Cao G, Lee S. Prevalence of electrolyte and nutritional deficiencies in Chinese bariatric surgery candidates. *Surg Obes Relat Dis.* 2016;12(3):629-634.
82. Lefebvre P, Letois F, Sultan A, Nocca D, Mura T, Galtier F. Nutrient deficiencies in patients with obesity considering bariatric surgery: a cross-sectional study. *Surg Obes Relat Dis.* 2014;10(3):540-546.
83. Ghose B, Yaya S, Tang S. Anemia status in relation to body mass index among women of childbearing age in Bangladesh. *Asia Pac J Public Health.* 2016;28(7):611-619.
84. Qin Y, Melse-Boonstra A, Pan X, et al. Anemia in relation to body mass index and waist circumference among Chinese women. *Nutr J.* 2013;12:10.
85. Dallman PR, Siimes MA, Stekel A. Iron deficiency in infancy and childhood. *Am J Clin Nutr.* 1980;33(1):86-118.
86. Farhat G, Lees E, Macdonald-Clarke C, Amirabdollahian F. Inadequacies of micronutrient intake in normal weight and overweight young adults aged 18-25 years: a cross-sectional study. *Public Health.* 2019;167:70-77.
87. Sanchez A, Rojas P, Basfi-Fer K, et al. Micronutrient deficiencies in morbidly obese women prior to bariatric surgery. *Obes Surg.* 2016;26(2):361-368.
88. Tussing-Humphreys LM, Liang H, Nemeth E, Freels S, Braunschweig CA. Excess adiposity, inflammation, and iron-deficiency in female adolescents. *J Am Diet Assoc.* 2009;109(2):297-302.
89. Aeberli I, Hurrell RF, Zimmermann MB. Overweight children have higher circulating hepcidin concentrations and lower iron status but have dietary iron intakes and bioavailability comparable with normal weight children. *Int J Obes (Lond).* 2009;33(10):1111-1117.
90. Menzie CM, Yanoff LB, Denkinger BI, et al. Obesity-related hypoferrremia is not explained by differences in reported intake of heme and nonheme iron or intake of dietary factors that can affect iron absorption. *J Am Diet Assoc.* 2008;108(1):145-148.
91. Cepeda-Lopez AC, Osendarp SJ, Melse-Boonstra A, et al. Sharply higher rates of iron deficiency in obese Mexican women and children are predicted by obesity-related inflammation rather than by differences in dietary iron intake. *Am J Clin Nutr.* 2011;93(5):975-983.
92. Failla ML, Kennedy ML, Chen ML. Iron metabolism in genetically obese (ob/ob) mice. *J Nutr.* 1988;118(1):46-51.
93. Cepeda-Lopez AC, Zimmermann MB, Wussler S, et al. Greater blood volume and Hb mass in obese women quantified by the carbon monoxide-rebreathing method affects interpretation of iron biomarkers and iron requirements. *Int J Obes (Lond).* 2019;43(5):999-1008.
94. Nemeth E, Ganz T. The role of hepcidin in iron metabolism. *Acta Haematol.* 2009;122(2-3):78-86.
95. Chung B, Chaston T, Marks J, Srai SK, Sharp PA. Hepcidin decreases iron transporter expression in vivo in mouse duodenum and spleen and in vitro in THP-1 macrophages and intestinal Caco-2 cells. *J Nutr.* 2009;139(8):1457-1462.
96. Mujica-Coopman MF, Brito A, Lopez de Romana D, Pizarro F, Olivares M. Body mass index, iron absorption and iron status in childbearing age women. *J Trace Elem Med Biol.* 2015;30:215-219.
97. Zimmermann MB, Zeder C, Muthayya S, et al. Adiposity in women and children from transition countries predicts decreased iron absorption, iron deficiency and a reduced response to iron fortification. *Int J Obes (Lond).* 2008;32(7):1098-1104.
98. Cepeda-Lopez AC, Melse-Boonstra A, Zimmermann MB, Herter-Aeberli I. In overweight and obese women, dietary iron absorption is reduced and the enhancement of iron absorption by ascorbic acid is one-half that in normal-weight women. *Am J Clin Nutr.* 2015;102(6):1389-1397.
99. Nemeth E, Valore EV, Territo M, Schiller G, Lichtenstein A, Ganz T. Hepcidin, a putative mediator of anemia of inflammation, is a type II acute-phase protein. *Blood.* 2003;101(7):2461-2463.
100. del Giudice EM, Santoro N, Amato A, et al. Hepcidin in obese children as a potential mediator of the association between obesity and iron deficiency. *J Clin Endocrinol Metab.* 2009;94(12):5102-5107.
101. Nemeth E, Rivera S, Gabayan V, et al. IL-6 mediates hypoferrremia of inflammation by inducing the synthesis of the iron regulatory hormone hepcidin. *J Clin Invest.* 2004;113(9):1271-1276.
102. Bekri S, Gual P, Anty R, et al. Increased adipose tissue expression of hepcidin in severe obesity is independent from diabetes and NASH. *Gastroenterol.* 2006;131(3):788-796.
103. Wrighting DM, Andrews NC. Interleukin-6 induces hepcidin expression through STAT3. *Blood.* 2006;108(9):3204-3209.
104. Chung B, Matak P, McKie AT, Sharp P. Leptin increases the expression of the iron regulatory hormone hepcidin in HuH7 human hepatoma cells. *J Nutr.* 2007;137(11):2366-2370.
105. Tussing-Humphreys L, Frayn KN, Smith SR, et al. Subcutaneous adipose tissue from obese and lean adults does not release hepcidin in vivo. *ScientificWorldJournal.* 2011;11:2197-2206.
106. sal E, Yenicesu I, Celik N, et al. Relationship between obesity and iron deficiency anemia: is there a role of hepcidin? *Hematol.* 2018;23(8):542-548.
107. Hernandez Vera R, Vilahur G, Badimon L. Obesity with insulin resistance increase thrombosis in wild-type and bone marrow-transplanted Zucker Fatty rats. *Thromb Haemost.* 2013;109(2):319-327.
108. Samocha-Bonet D, Justo D, Rogowski O, et al. Platelet counts and platelet activation markers in obese subjects. *Mediators Inflamm.* 2008;2008:834153.
109. Raoux L, Moszkowicz D, Vychnevskaia K, et al. Effect of bariatric surgery-induced weight loss on platelet count and mean platelet volume: a 12-month follow-up study. *Obes Surg.* 2017;27(2):387-393.
110. Williams JL, Pipia GG, Datta NS, Long MW. Thrombopoietin requires additional megakaryocyte-active cytokines for optimal ex vivo expansion of megakaryocyte precursor cells. *Blood.* 1998;91(11):4118-4126.
111. Lazzari L, Henschler R, Lecchi L, Rebulli P, Mertelsmann R, Sirchia G. Interleukin-6 and interleukin-11 act synergistically with thrombopoietin and stem cell factor to modulate ex vivo expansion of human CD41+ and CD61+ megakaryocytic cells. *Haematologica.* 2000;85(1):25-30.
112. Kaser A, Brandacher G, Steurer W, et al. Interleukin-6 stimulates thrombopoiesis through thrombopoietin: role in inflammatory thrombocytosis. *Blood.* 2001;98(9):2720-2725.
113. Baatout S. Interleukin-6 and megakaryocytopoiesis: an update. *Ann Hematol.* 1996;73(4):157-162.
114. Sui X, Tsuji K, Ebihara Y, et al. Soluble interleukin-6 (IL-6) receptor with IL-6 stimulates megakaryopoiesis from human CD34(+) cells through glycoprotein (gp)130 signaling. *Blood.* 1999;93(8):2525-2532.
115. Burmester H, Wolber EM, Freitag P, Fandrey J, Jelkmann W. Thrombopoietin production in wild-type and interleukin-6 knock-out mice with acute inflammation. *J Interferon Cytokine Res.* 2005;25(7):407-413.
116. Maury E, Ehala-Aleksejev K, Guiot Y, Detry R, Vandenhooft A, Brichard SM. Adipokines oversecreted by omental adipose tissue in human obesity. *Am J Physiol Endocrinol Metab.* 2007;293(3):E656-665.
117. Ageno W, Becattini C, Brighton T, Selby R, Kamphuisen PW. Cardiovascular risk factors and venous thromboembolism: a meta-analysis. *Circulation.* 2008;117(1):93-102.



118. Tsai AW, Cushman M, Rosamond WD, Heckbert SR, Polak JF, Folsom AR. Cardiovascular risk factors and venous thromboembolism incidence: the longitudinal investigation of thromboembolism etiology. *Arch Intern Med.* 2002;162(10):1182-1189.
119. Di Minno G, Mannucci PM, Tufano A, et al. The first ambulatory screening on thromboembolism: a multicentre, cross-sectional, observational study on risk factors for venous thromboembolism. *J Thromb Haemost.* 2005;3(7):1459-1466.
120. Abdollahi M, Cushman M, Rosendaal FR. Obesity: risk of venous thrombosis and the interaction with coagulation factor levels and oral contraceptive use. *Thromb Haemost.* 2003;89(3):493-498.
121. Holst AG, Jensen G, Prescott E. Risk factors for venous thromboembolism: results from the Copenhagen City Heart Study. *Circulation.* 2010;121(17):1896-1903.
122. Samama MM. An epidemiologic study of risk factors for deep vein thrombosis in medical outpatients: the Sirius study. *Arch Intern Med.* 2000;160(22):3415-3420.
123. Stein PD, Beemath A, Olson RE. Obesity as a risk factor in venous thromboembolism. *Am J Med.* 2005;118(9):978-980.
124. Borch KH, Braekkan SK, Mathiesen EB, et al. Anthropometric measures of obesity and risk of venous thromboembolism: the Tromso study. *Arterioscler Thromb Vasc Biol.* 2010;30(1):121-127.
125. Hansson PO, Eriksson H, Welin L, Svardsudd K, Wilhelmsen L. Smoking and abdominal obesity: risk factors for venous thromboembolism among middle-aged men: "the study of men born in 1913". *Arch Intern Med.* 1999;159(16):1886-1890.
126. Eichinger S, Hron G, Bialonczyk C, et al. Overweight, obesity, and the risk of recurrent venous thromboembolism. *Arch Intern Med.* 2008;168(15):1678-1683.
127. Rodger MA, Kahn SR, Wells PS, et al. Identifying unprovoked thromboembolism patients at low risk for recurrence who can discontinue anticoagulant therapy. *CMAJ.* 2008;179(5):417-426.
128. Writing Group Members, Mozaffarian D, Benjamin EJ, et al. Heart disease and stroke statistics-2016 update: a report from the American Heart Association. *Circulation.* 2016;133(4):e38-e360.
129. Regitz-Zagrosek V, Kararigas G. Mechanistic Pathways of Sex Differences in Cardiovascular Disease. *Physiol Rev.* 2017;97(1):1-37.
130. Vilahur G, Ben-Aicha S, Badimon L. New insights into the role of adipose tissue in thrombosis. *Cardiovasc Res.* 2017;113(9):1046-1054.
131. Schafer K, Konstantinides S. Adipokines and thrombosis. *Clin Exp Pharmacol Physiol.* 2011;38(12):864-871.
132. Wilkerson WR, Sane DC. Aging and thrombosis. *Semin Thromb Hemost.* 2002;28(6):555-568.
133. Allman-Farinelli MA. Obesity and venous thrombosis: a review. *Semin Thromb Hemost.* 2011;37(8):903-907.
134. Dellas C, Schafer K, Rohm I, et al. Absence of leptin resistance in platelets from morbidly obese individuals may contribute to the increased thrombosis risk in obesity. *Thromb Haemost.* 2008;100(6):1123-1129.
135. Nakata M, Yada T, Soejima N, Maruyama I. Leptin promotes aggregation of human platelets via the long form of its receptor. *Diabetes.* 1999;48(2):426-429.
136. Konstantinides S, Schafer K, Koschnick S, Loskutoff DJ. Leptin-dependent platelet aggregation and arterial thrombosis suggests a mechanism for atherothrombotic disease in obesity. *J Clin Invest.* 2001;108(10):1533-1540.
137. Corsonello A, Malara A, Ientile R, Corica F. Leptin enhances adenosine diphosphate-induced platelet aggregation in healthy subjects. *Obes Res.* 2002;10(4):306.
138. Konstantinides S, Schafer K, Neels JG, Dellas C, Loskutoff DJ. Inhibition of endogenous leptin protects mice from arterial and venous thrombosis. *Arterioscler Thromb Vasc Biol.* 2004;24(11):2196-2201.
139. Ozata M, Avcu F, Durmus O, Yilmaz I, Ozdemir IC, Yalcin A. Leptin does not play a major role in platelet aggregation in obesity and leptin deficiency. *Obes Res.* 2001;9(10):627-630.
140. Corsonello A, Perticone F, Malara A, et al. Leptin-dependent platelet aggregation in healthy, overweight and obese subjects. *Int J Obes Relat Metab Disord.* 2003;27(5):566-573.
141. Corica F, Corsonello A, Perticone F. Effects of leptin on platelet function in obese patients. *JAMA.* 2002;288(3):313-314.
142. Wallaschofski H, Kobsar A, Sokolova O, et al. Differences in platelet activation by prolactin and leptin. *Horm Metab Res.* 2004;36(7):453-457.
143. Chu NF, Spiegelman D, Hotamisligil GS, Rifai N, Stampfer M, Rimm EB. Plasma insulin, leptin, and soluble TNF receptors levels in relation to obesity-related atherogenic and thrombogenic cardiovascular disease risk factors among men. *Atherosclerosis.* 2001;157(2):495-503.
144. Singh P, Peterson TE, Barber KR, et al. Leptin upregulates the expression of plasminogen activator inhibitor-1 in human vascular endothelial cells. *Biochem Biophys Res Commun.* 2010;392(1):47-52.
145. Cushman M, Yanez D, Psaty BM, et al. Association of fibrinogen and coagulation factors VII and VIII with cardiovascular risk factors in the elderly: the cardiovascular health study. Cardiovascular health study investigators. *Am J Epidemiol.* 1996;143(7):665-676.
146. Rosito GA, D'Agostino RB, Massaro J, et al. Association between obesity and a prothrombotic state: the Framingham Offspring Study. *Thromb Haemost.* 2004;91(4):683-689.
147. Ay L, Kopp HP, Brix JM, et al. Thrombin generation in morbid obesity: significant reduction after weight loss. *J Thromb Haemost.* 2010;8(4):759-765.
148. Samad F, Pandey M, Loskutoff DJ. Regulation of tissue factor gene expression in obesity. *Blood.* 2001;98(12):3353-3358.
149. Napoleone E, Di santo A, Amore C, et al. Leptin induces tissue factor expression in human peripheral blood mononuclear cells: a possible link between obesity and cardiovascular risk? *J Thromb Haemost.* 2007;5(7):1462-1468.
150. Rafail S, Ritis K, Schaefer K, et al. Leptin induces the expression of functional tissue factor in human neutrophils and peripheral blood mononuclear cells through JAK2-dependent mechanisms and TNFalpha involvement. *Thromb Res.* 2008;122(3):366-375.
151. Mertens I, Van Gaal LF. Obesity, haemostasis and the fibrinolytic system. *Obes Rev.* 2002;3(2):85-101.
152. Pandolfi A, Iacoviello L, Capani F, Vitacolonna E, Donati MB, Consoli A. Glucose and insulin independently reduce the fibrinolytic potential of human vascular smooth muscle cells in culture. *Diabetologia.* 1996;39(12):1425-1431.
153. Murakami T, Horigome H, Tanaka K, et al. Impact of weight reduction on production of platelet-derived microparticles and fibrinolytic parameters in obesity. *Thromb Res.* 2007;119(1):45-53.
154. Shimomura I, Funahashi T, Takahashi M, et al. Enhanced expression of PAI-1 in visceral fat: possible contributor to vascular disease in obesity. *Nat Med.* 1996;2(7):800-803.
155. Samad F, Loskutoff DJ. Tissue distribution and regulation of plasminogen activator inhibitor-1 in obese mice. *Mol Med.* 1996;2(5):568-582.
156. Folsom AR, Qamhieh HT, Wing RR, et al. Impact of weight loss on plasminogen activator inhibitor (PAI-1), factor VII, and other hemostatic factors in moderately overweight adults. *Arterioscler Thromb.* 1993;13(2):162-169.
157. Marckmann P, Toubro S, Astrup A. Sustained improvement in blood lipids, coagulation, and fibrinolysis after major weight loss in obese subjects. *Eur J Clin Nutr.* 1998;52(5):329-333.
158. Molins B, Pena E, Vilahur G, Mendieta C, Slevin M, Badimon L. C-reactive protein isoforms differ in their effects on thrombus growth. *Arterioscler Thromb Vasc Biol.* 2008;28(12):2239-2246.
159. Danenberg HD, Szalai AJ, Swaminathan RV, et al. Increased thrombosis after arterial injury in human C-reactive protein-transgenic mice. *Circulation.* 2003;108(5):512-515.



160. Grad E, Danenberg HD. C-reactive protein and atherothrombosis: cause or effect? *Blood Rev.* 2013;27(1):23-29.
161. Hankey CR, Rumley A, Lowe GD, Woodward M, Lean ME. Moderate weight reduction improves red cell aggregation and factor VII activity in overweight subjects. *Int J Obes Relat Metab Disord.* 1997;21(8):644-650.
162. Davi G, Guagnano MT, Ciabattini G, et al. Platelet activation in obese women: role of inflammation and oxidant stress. *JAMA.* 2002;288(16):2008-2014.
163. De Pergola G, Pannaciuoli N, Coviello M, et al. sP-selectin plasma levels in obesity: association with insulin resistance and related metabolic and prothrombotic factors. *Nutr Metab Cardiovasc Dis.* 2008;18(3):227-232.
164. Nishimura S, Manabe I, Nagasaki M, et al. In vivo imaging in mice reveals local cell dynamics and inflammation in obese adipose tissue. *J Clin Invest.* 2008;118(2):710-721.
165. Yaron G, Brill A, Dashevsky O, et al. C-reactive protein promotes platelet adhesion to endothelial cells: a potential pathway in atherothrombosis. *Br J Haematol.* 2006;134(4):426-431.
166. Gulcan M, Varol E, Etili M, Aksoy F, Kayan M. Mean platelet volume is increased in patients with deep vein thrombosis. *Clin Appl Thromb Hemost.* 2012;18(4):427-430.
167. Cil H, Yavuz C, Islamoglu Y, et al. Platelet count and mean platelet volume in patients with in-hospital deep venous thrombosis. *Clin Appl Thromb Hemost.* 2012;18(6):650-653.
168. Coban E, Ozdogan M, Yazicioglu G, Akcift F. The mean platelet volume in patients with obesity. *Int J Clin Pract.* 2005;59(8):981-982.
169. Bordeaux BC, Qayyum R, Yanek LR, et al. Effect of obesity on platelet reactivity and response to low-dose aspirin. *Prev Cardiol.* 2010;13(2):56-62.
170. Tamminen M, Lassila R, Westerbacka J, Vehkavaara S, Yki-Jarvinen H. Obesity is associated with impaired platelet-inhibitory effect of acetylsalicylic acid in nondiabetic subjects. *Int J Obes Relat Metab Disord.* 2003;27(8):907-911.
171. Hanzu FA, Palomo M, Kalko SG, et al. Translational evidence of endothelial damage in obese individuals: inflammatory and prothrombotic responses. *J Thromb Haemost.* 2011;9(6):1236-1245.
172. Marseglia L, Manti S, D'Angelo G, et al. Oxidative stress in obesity: a critical component in human diseases. *Int J Mol Sci.* 2014;16(1):378-400.
173. Lentz SR. Thrombosis in the setting of obesity or inflammatory bowel disease. *Blood.* 2016;128(20):2388-2394.

How to cite this article: Purdy JC, Shatzel JJ. The hematologic consequences of obesity. *Eur J Haematol.* 2021;106:306–319. <https://doi.org/10.1111/ejh.13560>