

Insulin resistance in Alzheimer's disease: The genetics and metabolomics links

Arwa M. Amin^{a,*}, Hamza Mostafa^{b,c}, Hani M.J. Khojah^a

^a Department of Clinical and Hospital Pharmacy, College of Pharmacy, Taibah University, Madinah, Saudi Arabia

^b Biomarkers and Nutrimetabolomics Laboratory, Department of Nutrition, Food Sciences and Gastronomy, Food Innovation Network (XIA), Nutrition and Food Safety Research Institute (INSA), Facultat de Farmàcia i Ciències de l'Alimentació, Universitat de Barcelona (UB), 08028 Barcelona, Spain

^c Centro de Investigación Biomédica en Red de Fragilidad y Envejecimiento Saludable (CIBERFES), Instituto de Salud Carlos III, Madrid 28029, Spain

ARTICLE INFO

Keywords:

Alzheimer's disease
Genetic
Metabolomics
Insulin resistance
Diabetes
Obesity
Therapeutics

ABSTRACT

Alzheimer's disease (AD) is a neurodegenerative disease with significant socioeconomic burden worldwide. Although genetics and environmental factors play a role, AD is highly associated with insulin resistance (IR) disorders such as metabolic syndrome (MS), obesity, and type two diabetes mellitus (T2DM). These findings highlight a shared pathogenesis. The use of metabolomics as a downstream systems' biology (omics) approach can help to identify these shared metabolic traits and assist in the early identification of at-risk groups and potentially guide therapy. Targeting the shared AD-IR metabolic trait with lifestyle interventions and pharmacological treatments may offer promising AD therapeutic approach. In this narrative review, we reviewed the literature on the AD-IR pathogenic link, the shared genetics and metabolomics biomarkers between AD and IR disorders, as well as the lifestyle interventions and pharmacological treatments which target this pathogenic link.

1. Introduction

Alzheimer's disease (AD) is a progressive neurodegenerative disease which affects peoples' psychological, physical, emotional, and social abilities extensively. AD claimed 134,242 people in 2020 according to the Centers for Disease Control and Prevention (CDC) of the United States [1]. According to the recent fact sheet of the World Health Organization (WHO), there are 50 million suffering from dementia globally wherein 60–70 % of the cases are caused by AD [2]. Based on the recent report of the Alzheimer's Association, AD is the fifth leading cause of death among Americans older than 65-year and the sixth leading cause of deaths among all ages [3]. To date, there is no curative treatment for AD [2,3]. However, identifying biomarkers which predict risk populations and implicated pathophysiological factors may help to prevent and probably combat the progressive course of the disease.

The hallmark pathogenic features of AD are the accumulation of beta amyloids (A β) outside neurons and the hyperphosphorylation and aggregation of tau proteins inside neurons [3–6]. Other substantial AD features may also present such as brain atrophy, particularly hippocampal and neocortex atrophy [7], and the large volume of white matter hyperintensities (WMH) [8]. Furthermore, reduced levels of neurotransmitters' such as acetylcholine and catecholamines such as

norepinephrine and dopamine had been indicated in AD [9–11]. AD is a multifactorial disease where genetic variants and other environmental or non-genetic factors may cause and aggravate the disease progression [12–18]. The environmental or the non-genetic factors include, but not limited to, aging, cardiovascular diseases (CVDs) including ischemic stroke and coronary artery disease (CAD), type 2 diabetes (T2DM), metabolic syndrome (MS), obesity, depression, women particularly postmenopausal, cognitive inactivity, dyslipidemia, smoking, substance abuse, and unhealthy dietary habits [2,13,15,16,19–23]. These environmental factors may lead, in a way or another, to some pathogenic pathways which cause or aggravate AD development. These pathways include, but not limited to, oxidative stress, mitochondrial dysfunction, chronic inflammation, reduced glucose utilization and energy metabolism as well as brain insulin resistance (IR) [6,24–27].

IR disorders such as MS, obesity and T2DM are highly associated with AD [24,28–32]. However, the mechanisms by which this association occur are not fully understood. It could be linked to shared genetic variants or rather downstream factors which may had induced the disease manifestations [18,24,33–36]. One of the downstream systems' biology (omics) approaches is metabolomics which identifies metabolic traits associated with diseases, exposures, and responses to therapy [37–39]. Metabolomics has the advantage of being close to the

* Corresponding author at: Department of Clinical and Hospital Pharmacy, College of Pharmacy, Taibah University, Madinah 42353, Saudi Arabia.
E-mail address: arwa.amin.m@gmail.com (A.M. Amin).

phenotype as well as reflecting upper stream systems' biology approaches such as genomics, transcriptomics and proteomics [37]. In a recent review by the first author, common metabolomics biomarkers and metabolic pathways among cardiometabolic diseases (CMDs) were reviewed [40]. The reviewed CMDs included IR disorders (MS, obesity and T2DM), CVDs and cerebrovascular diseases. Almost 40 metabolomics biomarkers were common between those CMDs representing a shared metabolic trait and pathways (CMDs Metabotype). We conceptualized that the AD-IR pathogenic link is accentuated on the metabolomics level as well. However, to the best of our knowledge this has not been reviewed in the literature previously. The shared metabolic trait between AD and IR disorders may assist early diagnosis and guide therapy. Therefore, we aimed to sight the presence of the previously reviewed CMDs metabolic trait in AD. Towards that end, we reviewed the literature on the pathogenic link between AD and IR disorders and their shared genetics and metabolomics biomarkers. We also applied a web-based metabolic pathway analysis for the common metabolites between AD and IR disorders to indicate implicated metabolic pathway in the link between them. Furthermore, we also reviewed the therapeutic approaches which may interfere with these interlinked pathogenic and metabolic pathways. The MEDLINE through PubMed database was used to retrieve literature on the AD-IR disorders link including genetic factors involved in this link. Moreover, we searched for the AD metabolomics studies which include the CMDs Metabotype that has been reported previously [40]. The review contains four main sections besides the introduction (First section) and the conclusion (Last section). In the second section, the AD and IR disorders pathogenic link is discussed. In the third section, the shared genetics biomarkers between AD and IR disorders are discussed. The fourth section focuses on the shared metabolomics biomarkers between AD and IR disorders. The fifth section discusses the current state of therapeutics which can target the AD-IR link and the proposed future investigations in this direction.

2. AD and IR disorders pathogenic link:

The role of impaired insulin signaling in the pathogenesis of AD gained attention in the past two decades [27,41,42]. In fact, both insulin deficiency and insulin resistance (IR) have detrimental consequences on the brain [43,44]. In the context of IR, there are several plausible pathways that may explain the link between AD and IR. In the insulin resistance state, three detrimental elements are present, the IR, the compensated peripheral hyperinsulinemia and the consequent hyperglycemia or glucose intolerance. Simply put, IR is the reduced response to insulin which can occur due to genetic and/or environmental factors [45]. When developed, IR is compensated by increased secretion of insulin (i.e., Hyperinsulinemia) to achieve normoglycemia leading to the vicious cycle of IR ↔ Hyperinsulinemia [46,47]. This vicious cycle is implicated in AD pathogenesis in a way or another [25,48,49]. Since the transport of molecules across the blood brain barrier (BBB) is highly affected by the variation in their peripheral levels, peripheral hyperinsulinemia leads to elevation in brain insulin [43,50]. Insulin is degraded by the insulin degrading enzyme (IDE), an enzyme which degrades Aβ protein as well [36,43]. However, insulin competes with Aβ protein for IDE with higher IDE-insulin affinity compared to Aβ protein [36]. Thus, a state of hyperinsulinemia can lead to Aβ protein accumulation, one of the important hallmarks of AD [36,43]. Moreover, insulin increases Aβ protein in the extracellular spaces [36]. Accumulated Aβ proteins interfere with the bindings of insulin to insulin receptors which aggravates IR [25,27,36,51]. On the other hand, IDE dysfunction increases the accumulation of Aβ. The reduced metabolic activity of IDE can happen due to some genetic polymorphisms or due to some conditions such as Type one diabetes mellitus (T1DM) [52–56]. Therefore, considering the pathogenic interaction between Aβ and impaired insulin signaling, it is not surprising that impaired cerebral glucose metabolism usually precedes AD signs and symptoms by several years [26,57,58]. In fact, IR as well as hyperglycemia affect memory

performance and neuronal growth which play role in cognitive dysfunction, a key clinical feature of AD [59]. Post-prandial glucose in T2DM patients had been found associated with white matter hyperintensities (WMH) and brain atrophy, both are indicative of AD risk and progression [8,19]. In another way, IR has been linked to tau hyperphosphorylation tauopathy which are crucial pathogenic features in AD [60]. In addition, IR affects neurotransmitters' levels [10,61]. For instance, impaired insulin signaling reduces acetylcholine level in the brain leading to crucial cholinergic perturbations which are largely implicated in AD progression [9,10,61]. In fact, the synthesis of acetylcholine from choline and acetyl-Coenzyme A (Acetyl-Co-A) is reduced significantly in AD patients [9,10]. Besides the direct detrimental effect of hyperinsulinemia in the brain, it may lead to brain insulin deficiency. Indeed, the chronic state of hyperinsulinemia interferes with the saturable transport of insulin through the BBB, eventually leading to the reduction of insulin levels in the central nervous system (CNS) [27,43,50]. CNS insulin deficiency is associated with AD pathogenesis and progression as well [43,62]. In other words, AD represents a state of type 3 diabetes where combined effects of IR and insulin deficiency are implicated in the pathogenesis [63,64].

There are other shared pathogenic pathways between AD and IR disorders. For instance, chronic inflammation and oxidative stress are involved in the pathogenesis of AD and IR disorders [15,25,65]. Another pathogenic link is the association between IR disorders and the disturbed gut microbiota which may lead to disrupted gut-brain axis [66–70]. Disturbed gut-microbiota has been linked to neurodegenerative diseases including AD [71–73]. In this pathway, the gut-microbiota-brain-axis plays important role in modulating brain's functions and behaviors suggesting the hypothesis of "AD may begin in the gut" [72]. Similarly, IR may explain the link between AD and CVDs. AD had been found associated with CVDs, cerebrovascular diseases (CVAs), intima-media thickness of carotid arteries as well as high platelets reactivity and endothelial dysfunction [2,23,48,74–76]. In fact, some reports suggested that the AD-CVDs association might be bidirectional and mediated by the Aβ protein [76,77]. Indeed, IR is highly implicated in CVDs where the vicious cycle of IR ↔ hyperinsulinemia is involved in CVDs' pathogenesis [49,78]. This vicious cycle is associated with the atherogenic dyslipidemia, one of the main risk factors of stroke and other CVDs [79–82]. Furthermore, it is also associated with high platelets reactivity and endothelial dysfunctions which increases CVDs risk in people suffering from IR disorders [83–86]. Moreover, intima-media thickness of common carotid arteries is associated with IR, hyperinsulinemia and high blood glucose levels [87–89]. Fig. 1 illustrates the role of IR ↔ Hyperinsulinemia vicious cycle and related conditions in AD development.

3. Genetics variabilities shared between AD and IR disorders

There have been enormous efforts exerted to identify AD genetic associations, however, the genetic overlapping of AD with other diseases gained substantial focus to delineate risk groups. IR-AD genetic links had been identified in various literature. For instance, the genetic link of the obesity-brain atrophy association was investigated by Ho and colleagues [33]. In their study, they used magnetic resonance imaging (MRI) to generate regional brain 3D maps for 206 healthy elderly subjects from the Alzheimer's Disease Neuroimaging Initiative (ADNI). Subjects were classified to carriers and non-carriers of the risk allele for the single-nucleotide polymorphism (SNP) rs3751812 within the fat mass and obesity-associated (*FTO*) gene. Healthy elderly subjects who were carriers of the rs3751812 SNP-obesity-risk allele had a systematic brain volume deficit [33]. The same SNP (rs3751812) had been found associated with MS and T2DM as well [90]. Other obesity-risk-associated SNPs from the *FTO* gene such as, rs17817449, rs9939609, rs8050136 and rs1421085 had been linked to changes in cognition and brain function [33,35,91]. Furthermore, the rs1421085 SNP was found to be associated with obesity, changes in brain functions and decreased

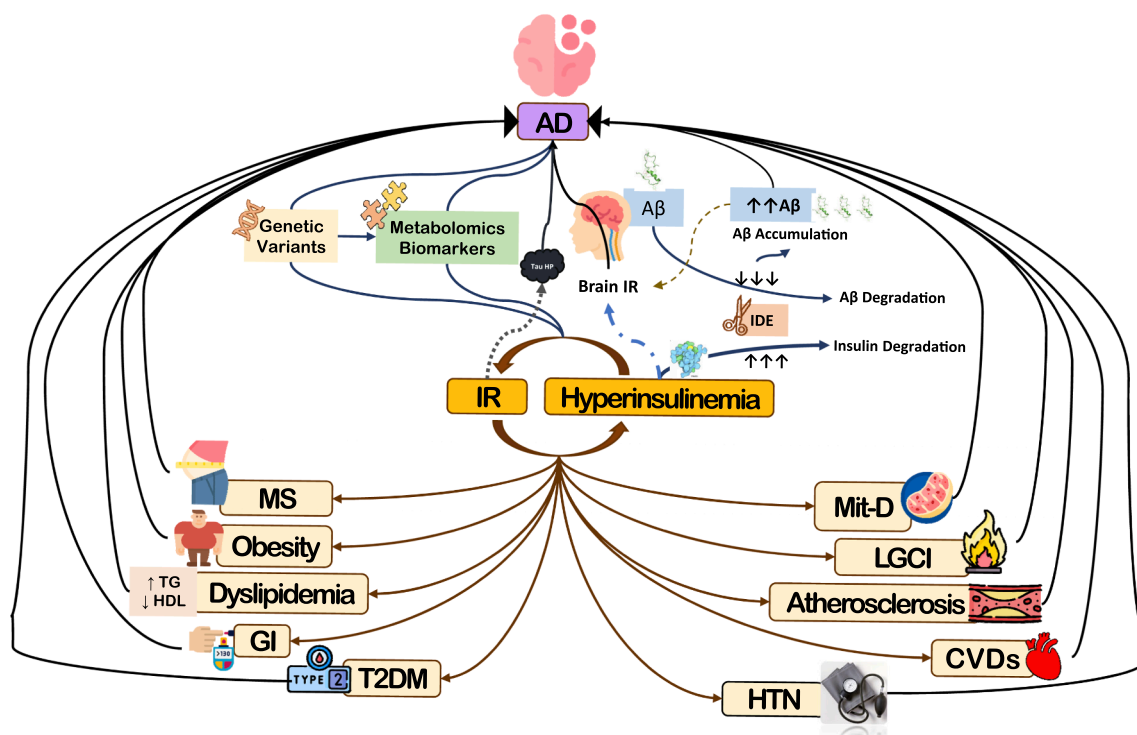


Fig. 1. The role of Insulin resistance (IR), Hyperinsulinemia and their associated conditions in AD.

AD is multifactorial where genetic and non-genetic factors interact in the pathogenesis. Cardiometabolic Diseases such as MS, obesity, T2DM, and CVDs share the vicious cycle of IR ↔ hyperinsulinemia which affects the brain in several pathways. High insulin levels competes with A β protein for IDE with higher IDE-insulin affinity compared to A β leading to A β accumulation. A β protein interferes with the bindings of insulin-to-insulin receptors causing brain IR. Tau hyperphosphorylation has been linked to IR. Metabolomics is close to the disease phenotype and reflects genetics and other environmental factors implicated in the pathogenesis of the disease which is manifested by the common metabolic biomarkers between AD and IR disorders. The IR ↔ hyperinsulinemia vicious cycle and related conditions (Below the vicious cycle part) is adapted and modified with permission from Amin, A. M. (2021). “The metabolic signatures of cardiometabolic diseases: Does the shared metabolotype offer new therapeutic targets?” *Lifestyle Medicine* 2(1): e25. Abbreviations, AD: Alzheimer’s disease, IR: Insulin resistance, MS: Metabolic Syndrome, Mit-D: Mitochondrial dysfunction, HTN: Hypertension, GI: Glucose intolerance, CVDs: Cardiovascular diseases, LGCI: Low Grade Chronic Inflammation, A β : Amyloid beta, IDE: Insulin Degrading Enzyme. Obesity, T2DM, GI, brain, MS, Inflammation, Mitochondria and Atherosclerosis icons from free icon website (www.flaticon.com). Insulin molecule icon from: <https://pdb101.rcsb.org/motm/14>. A β molecule icon created from pdb file 2lfm (public database) by Jeff Brender (biophysik) which is licensed under Creative Commons Attribution-Share Alike 3.0 (<https://creativecommons.org/licenses/by-sa/3.0/deed.en>).

medial prefrontal cortical function among subjects from the Baltimore Longitudinal Study of Aging (BLSA) [91]. Noteworthy, the aforementioned *FTO* gene SNPs (rs3751812, rs17817449, rs9939609, rs8050136 and rs1421085) had been found associated with other IR disorders, particularly MS and T2DM [90,92–94]. There are several plausible mechanisms which may explain the role of the *FTO* gene in the pathophysiological overlapping between AD and IR disorders [95]. The *FTO* gene risk alleles are positively associated with plasma ghrelin, an orexigenic hormone, however they are negatively associated with leptin, a satiety promoting hormone [96]. This may lead to impaired satiation and weight gain. As consequence, hyperinsulinemia and IR will develop causing disorders such as, MS, obesity and T2DM [97,98]. Although a neuroprotective role of ghrelin had been proposed [99], increased plasma levels of ghrelin and acyl-ghrelin, the functional form of ghrelin, were associated with reduced cognitive function suggesting that elevation in acyl-ghrelin/des-acyl-ghrelin ratio, as well as changes in ghrelin receptors or ghrelin sensitivity might be implicated in AD pathogenesis [97,100,101]. In fact, ghrelin had been considered an AD biomarker [102]. Therefore, the *FTO*-ghrelin-IR pathway may have substantial role in the association between IR disorders and AD.

There are other genetic variants which are associated with both T2DM and AD. In a study by Wang et al., 2017 [34], 8 novel pleiotropic SNPs were found associated with both AD and T2DM among European population [34]. This was indicated through the analysis of Genome-wide association study (GWAS) datasets from the IGAP and the

DIAGRAM consortia [34]. The eight novel pleiotropic SNPs were rs896854, rs6859, rs2075650, rs6982393, rs4734295, rs7812465, rs10510109, and rs2421016. For these genetic variants, they are linked to oxidative stress, mitochondrial dysfunction, autophagy activation, the regulation of phosphoinositide-3-kinase (PI3K), and apolipoprotein E (ApoE) [34,103]. These aforementioned pathways are highly implicated in the pathogenesis of AD and IR disorders [43]. Some of the SNPs which were identified by Wang and colleagues [34] had been found associated with obesity and ischemic stroke (IS) as well as one or more of the metabolic features of MS such as dyslipidemia, glucose intolerance and IR. For instance, the rs6859 SNP had been found associated with dyslipidemia among Chinese Maonan population [104]. Another example, the rs 2075650 SNP had been found associated with dyslipidemia and carotid artery disease risk [105]. Yamase and colleagues indicated that the rs2075650 SNP is associated with IS in Japanese population [106]. The rs2075650 SNP is associated with CAD as well [107,108]. Both IS and CAD are risk factors of AD [21,48,74]. They are also metabolically linked to IR disorders as previously discussed in this review. The role of the IDE in the AD-IR pathogenic link is mediated by genetic polymorphisms as well. In fact, there are several SNPs in the *IDE* gene which are associated with either AD or T2DM [52,109–111]. The rs1887922 SNP from the *IDE* gene had been linked to both diseases. It had been found associated with late onset of AD among Chinese population samples [52,110]. This association was accentuated in men and non-carriers of the apolipoprotein E (*ApoE*) *e4* allele of the *ApoE* gene

[52]. Similarly, the rs1887922 SNP had been found associated with fasting plasma glucose, mean fasting plasma glucose, HbA1c and T2DM [109]. It was accentuated in men as well. Furthermore, the rs1887922 SNP had been found associated with reduced insulin sensitivity and T2DM risk in German cohort [111]. There are several plausible mechanisms to explain the role of the rs1887922 SNP risk allele in AD and T2DM. This role might be related to a reduced expression of *IDE* or reduced *IDE* metabolic activity which may increase A β accumulation [52–54]. On the other hand, the rs1887922 SNP risk allele is associated with reduced hepatic insulin degradation, an indication of early IR state [111]. It is worthy to mention that the rs1887922 SNP risk allele had been found associated with CAD, a risk factor of AD [53].

The effect of some AD genetic variants might be accentuated when their carriers endure another AD risk factor. For instance, the apolipoprotein E (*ApoE*) ϵ 4 allele of the *ApoE* gene is associated with AD in subjects with T2DM, hypertension, chronic low-grade inflammation and postmenopause [12,13,15,16,18,112]. In fact, the *ApoE* ϵ 4 genetic variant is associated with MS and obesity [14,113]. In a similar way, T2DM accentuates the association between the C allele of the apolipoprotein J/clusterin (*APOJ/CLU*) rs11136000 genetic variant and AD [17,114,115]. On the contrary, the T allele of the same SNP may offer a protective effect against AD [114]. The *APOJ* – rs11136000 genetic variant association with neural inefficiency is present in healthy subjects as well [116]. In fact, several loci in the *APOJ/CLU* gene showed significant association with A β deposition [117]. The *APOJ/CLU* gene encodes for clusterin which has been considered a biomarker of AD, particularly in AD patients suffering from IR conditions [118–121]. Indeed, clusterin dysregulation has been implicated in several diseases such as AD, CVDs, cancer and T2DM [118–120,122,123]. Clusterin perturbation causes IR which explains its role in the AD-IR pathogenic link [119,124]. Noteworthy, the rs11136000-AD association is not consistent among ethnicities, yet considering age may adjust towards the existence of the association in people over 75 years [17,125]. Besides the interactions of risk diseases with the AD genetic variants, currying dual polymorphisms of AD-IR genetic variants increases AD risk. For instance, carriers of both the *FTO*- (rs9939609) - AA genotype and the *ApoE* ϵ 4 genetic variants have higher risk for AD, particularly dementia [126]. As previously discussed, *FTO* is associated with obesity, T2DM and MS. Another example had been shown in a Chinese population-based study where carriers of the *NDUFAF6*- (rs6982393) and *ApoE* ϵ 4 genetic variants had higher risk for AD [112]. Both polymorphisms are associated with IR disorders. In Table 1, some of the SNPs and genes that

are common between AD and IR disorders are presented.

4. Metabolomics biomarkers shared between AD and IR disorders:

Metabolomics is one of the main systems' biology (omics-level) personalized medicine approaches which comes after genomics, epigenomics, transcriptomics and proteomics [129–131]. Metabolomics has the advantage of reflecting previous omics levels and being close to the phenotype. Therefore, a metabolomics link between diseases may reflect associated metabolic pathways which can't be indicated in the upstream genetic link. In metabolomics studies, a spectroscopical analysis of biosamples is used to cluster metabolites based on certain phenotype such as disease, condition or exposure to treatment [57,73,130–134]. This sheds light on the metabolic pathways' perturbations which gives better understanding of the pathogenicity, as well as assisting diagnosis and guiding therapy [37,57,135]. In a previous review, the shared metabolic biomarkers of CMDs were presented [40]. Upon literature review for the current review, we found that most of such metabolites along with other metabolites are common between AD or cognitive decline/impairment and IR disorders. In Table 2, we present more than 50 metabolites which are commonly perturbed in AD and IR disorders (i.e., AD-IR link metabolite). Most of these metabolites are involved in several metabolic pathways implicated in both AD and IR disorders.

Glucose, mannose and fructose are common metabolic biomarkers of IR disorders and AD [26,134,136–142]. As early mentioned, impaired cerebral glucose metabolism plays vital role in AD pathogenesis and it usually proceeds AD clinical symptoms by several years [26,57]. Biomarkers indicating perturbation in lipid metabolism had been found in several AD metabolomics and lipidomic studies. For instance, ceramides which are an essential sphingolipids precursor were perturbed in AD [57,143,144]. In a human study by Han and colleagues, ceramides were significantly higher in AD patients compared to controls [143]. In a more recent study by Yi and colleagues, ceramides and sphingolipids were elevated in cerebral cortices of AD rats [144]. Ceramides are commonly altered in IR disorders such as T2DM, metabolic syndrome and obesity [145–147]. Ceramides usually indicate an alteration in mitochondrial function, inflammation and IR [147–149]. Such pathogenic pathways are implicated in AD as previously discussed in this review. Metabolic biomarkers of gut microbiota dysbiosis are highly presented in the common metabolites between AD and IR disorders

Table 1
Examples of SNPs and genetic variabilities associated with both AD and IR disorders.

SNP/allele	Gene/Chromosome	AD	T2DM	MS/ MS Features (IR, elevated HOMA-IR, Dyslipidemia, Glucose Intolerance)	Obesity
rs3751812	<i>FTO</i> /Chr16	[33]	[90]	[90]	[33,90]
rs1421085	<i>FTO</i> /Chr16	[91,35]	–	[92]	[91]
rs17817449	<i>FTO</i> /Chr16	[35]	[94]		[35]
rs9939609	<i>FTO</i> /Chr16	[35]	[93,94]	[92]	[35]
rs8050136	<i>FTO</i> /Chr16	[35]	[93]	[92]	[35]
<i>ApoE</i> ϵ 4	<i>ApoE</i> /Chr19	[16,18]	[16,127]	[113]	[14]
rs11136000	<i>APOJ (CLU)</i> /Chr8	[17,125]	[115,127]	[127,17]	–
rs2075650	<i>TOMM40</i> /Chr19	[34]	[34]	[105]	[14]
rs896854	<i>TP53INP1</i> /Chr8	[34]	[34]	[128]	–
rs6859	<i>PVRL2</i> /Chr19	[34]	[34]	[104]	–
rs6982393	<i>TP53INP1</i> /Chr8	[112,34]	[34]	–	–
rs4734295	<i>C8orf38 NDUFAF6</i> <i>TP53INP1</i> /Chr8	[34]	[34]	–	–
rs7812465	<i>C8orf38</i> <i>C8orf38</i> /Chr8	[34]	[34]	–	–
rs10510109	<i>BTBD16</i> /Chr10	[34]	[34]	–	–
rs2421016	<i>PLEKHA1</i> /Chr10	[34]	[34]	–	–
rs1887922	<i>IDE</i> /Chr10	[52,110]	[111,109]	–	–

AD: Alzheimer Disease, SNP: Single nucleotide polymorphism, *FTO*: fat mass and obesity-associated gene, T2DM: Type 2 Diabetes Mellitus, MS: Metabolic syndrome, *ApoE*: apolipoprotein E, *APOJ*: apolipoprotein J, *NDUFAF6*: NADH Ubiquinone Oxidoreductase Complex Assembly Factor 6.

Table 2
Examples on metabolic biomarkers associated with both AD and IR disorders.

Metabolites	AD/CD	MS/ IR / Dyslipidemia/ GI	Obesity	T2DM	Metabolic Pathway
Acetoacetate	[134]	[160]	[160,209]	[142,152,134]	<ul style="list-style-type: none"> • Butanoate metabolism • Synthesis and degradation of ketone bodies • Valine, leucine and isoleucine degradation
Adenosine Aspartate	[178,210,181,211,134], [135,215,181]	[212,186] [216]	[213,214] [183]	[213,214] [182]	<ul style="list-style-type: none"> • Purine metabolism • Alanine, aspartate and glutamate metabolism • Aminoacyl-tRNA biosynthesis • beta-Alanine metabolism • Histidine metabolism • Nicotinate and nicotinamide metabolism • Pantothenate and CoA biosynthesis • Urea Cycle
Acylcarnitines	[178,57,180]	[145,160,189]	[217,145,218,141]	[142,145,162]	<ul style="list-style-type: none"> • Carnitine Metabolism • Gut-Microbiota metabolism
Arginine	[215,219,167]	[160]	[66]	[193,184]	<ul style="list-style-type: none"> • Aminoacyl-tRNA biosynthesis • Arginine and proline Metabolism • Arginine biosynthesis
Alanine	[178,215,167]	[207,139]	[66,206,141]	[142,152,184]	<ul style="list-style-type: none"> • Aminoacyl-tRNA biosynthesis • Alanine, aspartate and glutamate Metabolism • Urea Cycle
Betaine	[167]	[220,221]	[222,223,224]	[225]	<ul style="list-style-type: none"> • Glycine, serine and threonine metabolism
BCAAs: Leucine, Isoleucine, Valine	[57,215,181,180]	[185,204,146,186]	[185,66,218]	[203,142,184,185,162]	<ul style="list-style-type: none"> • Gut-Microbiota metabolism • Aminoacyl-tRNA biosynthesis • Valine, leucine and isoleucine biosynthesis and degradation • Pantothenate and CoA biosynthesis
Ceramides	[143,144,57]	[145,146]	[145]	[145,147]	<ul style="list-style-type: none"> • Aminoacyl-tRNA biosynthesis • Sphingolipid metabolism
Choline	[178,134,167]	[139,220]	[66]	[162,68]	<ul style="list-style-type: none"> • Glycine, serine and threonine metabolism • Glycerophospholipid metabolism • Gut-Microbiota Metabolism
Citrate	[226]	[227]	[228]	[229]	<ul style="list-style-type: none"> • Alanine, aspartate and glutamate Metabolism • Citrate Cycle • Urea Cycle • Warburg Effect
Creatine	[178,134,226]	[160,139]	[66]	[162,152]	<ul style="list-style-type: none"> • Arginine and proline metabolism • Creatine biosynthesis and degradation • Creatine and creatinine Metabolism • Glycine, serine and threonine metabolism
Creatinine	[178,131,210]	[160]	[66]	[142]	<ul style="list-style-type: none"> • Creatine degradation • Creatine and creatinine metabolism • Gut-Microbiota metabolism
4-Cresol <i>p</i> -Cresol DMA	<i>p</i> -cresol sulfate [167], <i>p</i> -cresol glucuronide [230] [179]	<i>p</i> -cresol sulfate [231] [234,227]	<i>p</i> -cresol sulfate [232] [232]	[233] [229]	<ul style="list-style-type: none"> • Methylamines metabolism • Gut-Microbiota metabolism
DMG	[235]	[227]	[236]	[236,68]	<ul style="list-style-type: none"> • Glycine, serine and threonine metabolism • Methylamines metabolism • Gut-Microbiota metabolism
Fructose	[134,136]	[139,204]	[140,141]	[142,134]	<ul style="list-style-type: none"> • Fructose and mannose pathway • Amino sugar and nucleotide sugar metabolism
Formate (Formic Acid) Glucose	[131] [26,17,134,181,136]	[237,238] [137]	[239] [170,141]	[162,152] [142,162]	<ul style="list-style-type: none"> • Arginine and proline metabolism • Glycolysis and Gluconeogenesis pathway
Glutamine	[235,178,215]	[160,139,204]	[160]	[152],	<ul style="list-style-type: none"> • Aminoacyl-tRNA biosynthesis • Arginine biosynthesis • Glutamine and glutamate metabolism

(continued on next page)

Table 2 (continued)

Metabolites	AD/CD	MS/ IR / Dyslipidemia/ GI	Obesity	T2DM	Metabolic Pathway
Glutamate	[135,215]	[139]	[66,218,141]	[142]	<ul style="list-style-type: none"> • Alanine, aspartate and glutamate metabolism • Glyoxylate and dicarboxylate metabolism • Nitrogen Metabolism • Purine metabolism • Aminoacyl-tRNA biosynthesis • Arginine and proline metabolism • Alanine, aspartate and glutamate metabolism • Arginine biosynthesis • Butanoate metabolism • Glutamine and glutamate metabolism • Glyoxylate and dicarboxylate metabolism • Glutathione metabolism • Histidine metabolism • Nitrogen Metabolism • Urea Cycle
Glycine	[215]	[160,161]	[66,218,160]	[162]	<ul style="list-style-type: none"> • Glycine, serine and threonine metabolism • Aminoacyl-tRNA biosynthesis • Glyoxylate and dicarboxylate metabolism • Glutathione metabolism
Hippurate	[131]	[161,237]	[66,170,237]	[240]	<ul style="list-style-type: none"> • Phenylalanine Metabolism • Gut-Microbiota Metabolism
Histidine	[178]	[207,189]	[218,206]	[152]	<ul style="list-style-type: none"> • Aminoacyl-tRNA biosynthesis • Histidine metabolism • beta-Alanine metabolism
3-hydroxybutyrate (β-hydroxybutyrate)	[131]	[161,241,186]	[209]	[242]	<ul style="list-style-type: none"> • Butanoate metabolism • Synthesis and degradation of ketone bodies
Imidazole Propionate	[168]	[69175]	[176] ⁽²⁾	[175]	<ul style="list-style-type: none"> • Gut-Microbiota metabolism
3-indoxyl sulfate	[167][168]	[169]	[170], [171]	[172173] ⁽¹⁾	<ul style="list-style-type: none"> • Gut-Microbiota metabolism
Lactic acid	[210,215,181]	[160,139]	[66,218,160]	[142,162]	<ul style="list-style-type: none"> • Pyruvate Metabolism • Glycolysis and Gluconeogenesis pathway
Lysine	[134]	[160,208]	[66,206,160]	[162]	<ul style="list-style-type: none"> • Aminoacyl-tRNA biosynthesis
Mannose	[134]	[138]	[138,218,140,141]	[142], [138]	<ul style="list-style-type: none"> • Fructose and mannose pathway
3-Methyl-histidine	[167]	[243]	[232,243,206]	[142]	<ul style="list-style-type: none"> • Aminoacyl-tRNA biosynthesis • Histidine metabolism
Myoinositol	[215]	[160]	[160]	[142]	<ul style="list-style-type: none"> • Ascorbate and aldarate metabolism • Galactose metabolism • Phosphatidylinositol signaling system • Inositol phosphate metabolism
Nicotinamide	[135,134]	[186]	[244]	[133], [134]	<ul style="list-style-type: none"> • Nicotinate and nicotinamide metabolism
L-Ornithine	[181]	[207]	[206]	[142,152,193]	<ul style="list-style-type: none"> • Arginine and proline metabolism • Arginine biosynthesis • Glutathione metabolism • Urea Cycle
2-oxoglutarate (α-ketoglutarate)	[178,131,181]	[245,246,146,189]	[246,66,140]	[152]	<ul style="list-style-type: none"> • Glutamine and glutamate metabolism • Butanoate metabolism • Alanine, aspartate and glutamate metabolism
Phenylalanine	[134,181]	[160,204]	[66,218]	[142],	<ul style="list-style-type: none"> • Arginine biosynthesis • Aminoacyl-tRNA biosynthesis • Nitrogen Metabolism • Phenylalanine Metabolism • Phenylalanine, tyrosine and tryptophan biosynthesis
Phenylacetyl-glycine	[211,168]	[247]	[170]	[152]	<ul style="list-style-type: none"> • Phenylalanine metabolism • Gut-Microbiota metabolism
Proline	[180]	[207,204]	[206]	[142]	<ul style="list-style-type: none"> • Aminoacyl-tRNA biosynthesis • Arginine and proline metabolism
Pyruvate	[226]	[160]	[66,228]	[142]	<ul style="list-style-type: none"> • Arginine and proline metabolism • Alanine, aspartate and glutamate metabolism • Glyoxylate and dicarboxylate metabolism

(continued on next page)

Table 2 (continued)

Metabolites	AD/CD	MS/ IR / Dyslipidemia/ GI	Obesity	T2DM	Metabolic Pathway
SCFAs: Acetate, Valerate, Butyrate	[73], [130], [163], [131]	[160,161]	[66]	[162]	<ul style="list-style-type: none"> • Cysteine and methionine metabolism • Glycolysis and Gluconeogenesis pathway • Pyruvate Metabolism • Urea Cycle • Glyoxylate and dicarboxylate metabolism (Acetate) • Pyruvate Metabolism
Serine	[215,136]	[242,160]	[242,66]	[242,184]	<ul style="list-style-type: none"> • Gut-Microbiota metabolism • Aminoacyl-tRNA biosynthesis • Glycine, serine and threonine metabolism • Glyoxylate and dicarboxylate metabolism • Sphingolipid metabolism • Cysteine and methionine metabolism
Succinate	[215,131]	[216,234]	[248,249,232]	[229]	<ul style="list-style-type: none"> • Citrate Cycle • Butanoate metabolism • Warburg Effect • Gut-Microbiota metabolism
Taurine	[250,131,134]	[160,139]	[66]	[152]	<ul style="list-style-type: none"> • Taurine and hypotaurine metabolism
Threonine	[136]	[207,208]	[209]	[242,184,162]	<ul style="list-style-type: none"> • Glycine, serine and threonine metabolism • Aminoacyl-tRNA biosynthesis • Valine, leucine and isoleucine biosynthesis
TMAO	[157,156]	[70,231]	[151,66]	[152,67]	<ul style="list-style-type: none"> • Methylamines metabolism, Gut-Microbiota metabolism
TMA	[131]	[234,227]	[251]	[152]	<ul style="list-style-type: none"> • Methylamines metabolism • Gut-Microbiota metabolism

SCFAs: Short chain fatty acids, AD: Alzheimer's Disease, MS: Metabolic Syndrome, GI: Glucose Intolerance, CI: Cognitive Dysfunction, IR: Insulin resistance, TMA: Trimethylamine, TMAO: Trimethylamine-oxide, DMA: Dimethylamine, DMG: Dimethylglycine. ¹ In [173] study, 3-indoxyl sulfate increased in diabetic patients with nephropathy compared to diabetic with normal renal function. ² In [176] study, the correlation imidazole propionate was with hypertension in obese subjects

(Table 2). Some of these dysbiotic gut microbiota metabolites are directly derived microbiome metabolites and some are derived by combinatory metabolism of microbiome and host. In general, dysbiotic gut microbiota metabolites are associated with IR and chronic low grade inflammation [150]. For instance, trimethyl-amine-oxide (TMAO) is a gut microbiota metabolite which is one of the metabolic biomarkers of IR disorders such as T2DM, obesity and MS [66,67,70,151,152]. TMAO has been found associated with atherosclerosis, as well as a predictor of CVDs and mortality in T2DM patients [153–155]. Not surprisingly, TMAO is also associated with neuro-degenerative diseases such as AD [156,157]. In fact, inhibiting the gut-microbiota production of TMAO through dietary compounds such as 3,3-dimethyl-1-butanol (DMB) and resveratrol reduces atherosclerosis [158,159]. Whether this dietary or supplementation approach consequently reduces AD risk warrants further clinical study. Other AD-IR gut microbiota dysbiosis metabolic biomarkers include short chain fatty acids (SCFAs), 3-indoxyl sulfate, imidazole propionate, choline, betaine, and 4-cresol. Variations in SCFAs are associated with IR disorders and cognitive impairment [66,73,130,160–163]. Modulation of SCFAs had been found associated with improvements in insulin sensitivity, glucose metabolism and weight [130,164,165]. Therefore, dietary interventions toward favorable SCFAs modulation has beneficial effect in AD and IR disorders [130,166]. The 3-indoxyl sulfate (indoxyl sulfate) is gut microbiota derived metabolite which is associated with IR disorders and AD [167–172]. Indoxyl sulfate has been found elevated in diabetic patients with nephropathy compared to diabetic with normal renal function [173]. This metabolite promoted vascular calcification in chronic kidney disease (CKD) rat model where that association was linked to IR and elevated glucose [174]. Another gut derived metabolite is imidazole propionate which has been found associated with T2DM and prediabetes [175]. This association was highly linked to the dysbiosis in gut

microbiota. Imidazole propionate positively correlated with elevated blood pressure in obese subjects as well [176]. Imidazole propionate causes an impairment to insulin signaling and glucose metabolism, two crucial pathogenic factors in the AD-IR link [69,175]. Although its role in AD not yet elucidated, imidazole propionate as well as other gut-derived metabolites can cross BBB and have been recently detected in the forebrains of mice [168]. Much more details on imidazole propionate molecular mechanisms in humans are expected to thrive the discussion on this topic by an ongoing Sweden study [177]. Branched chain amino acids (BCAAs), acylcarnitines, lactate, pyruvate, serine, threonine, alanine, histidine, glutamine, adenosine, nicotinamide, proline, arginine, and aspartate were found perturbed metabolites in AD [57,134,167,178–181]. Similarly, these metabolites were associated with IR disorders such as T2DM, MS and obesity [133,137,139–142,182–186]. Elevated levels of BCAAs; L-leucine, L-isoleucine and L-valine are proinflammatory, induces oxidative stress and mitochondrial dysfunction [185,187,188]. They are indicative of IR as well [185,188]. Similarly, acylcarnitines promotes inflammation, oxidative stress, mitochondrial dysfunction and IR [145,189–191]. Such pathways are highly implicated in AD pathogenesis which explain their presence in AD metabolic biomarkers [57,178,180]. The metabolites: arginine, ornithine, proline, pyruvate, and glutamate are associated with the metabolic pathway of arginine and proline metabolism. In fact, alterations in arginine metabolism precede behavioral changes in AD mice model [192]. The accumulation of proline and ornithine may indicate increased activity of the arginase enzyme, a state which is not uncommon in IR disorders and it is associated with endothelial dysfunction and CVDs [193]. Increased arginase enzyme activity hinders the formation of nitric oxide (NO), and thus increasing the reactive oxygen species and mitochondrial dysfunction, as well as endothelial dysfunction and vascular complications [179,194,195]. The NO

pathway is implicated in neurodegenerative diseases including AD since decreased NO impairs cerebral blood flow [195]. Arginase inhibitors have been proposed as novel therapy to hinder AD progression, however, clinical investigations are in their early stage [196]. Collectively, the AD-IR link metabotype indicates common metabolic pathogenic pathways not only between AD and IR disorders but also between AD and IR disorders complications. Therefore, it is not surprising to us that most of the AD-IR linked metabolites had been linked to CVDs as well [197–201].

To shed more light on the most significant and impactful metabolites' sets and metabolic pathways in the AD-IR link metabotype (i.e. metabolites' list in Table 2), we applied enrichment over representation analysis (ORA) and metabolic pathway analysis for the metabolites' list in the AD-IR link metabotype using the web-based free software MetaboAnalyst 5.0 [202]. We considered p value < 0.05 and false discovery rate (FDR) < 0.1 for the listing of the implicated metabolites' sets and metabolic pathway, as shown in Tables 3 and 4, respectively. The enrichment ORA demonstrated that eleven metabolites' sets were significantly overrepresented, as shown in Table 3. Of these metabolites' sets, Glycine and Serine Metabolism, Urea Cycle, Ammonia Recycling, Glucose-Alanine Cycle, Arginine and Proline Metabolism and Alanine Metabolism had the most significance ($p < 0.001$ and $FDR < 0.02$). Other significant metabolites' sets can be sought from Table 3 ($p < 0.05$ and $FDR < 0.1$). Fig. 2.A and 2.B show Bar Chart and Dot plot views of the ORA, respectively. The metabolic pathway analysis of the AD-IR link metabotype based on the Kyoto Encyclopedia of Genes and Genomes (KEGG) showed that fourteen metabolic pathways were significantly perturbed ($p < 0.05$ and $FDR < 0.1$), as shown in Table 4. Metabolic pathways of: Aminoacyl-tRNA biosynthesis, Alanine, aspartate and glutamate metabolism, Arginine biosynthesis, Butanoate metabolism, Glyoxylate and dicarboxylate metabolism, Glycine, serine and threonine metabolism, Valine, leucine and isoleucine biosynthesis, D-Glutamine and D-glutamate metabolism, Arginine, and proline metabolism had the most significance with extremely low FDR ($p < 0.001$ and $FDR < 0.008$). Other significant metabolic pathways can be sought from Table 4 ($p < 0.05$ and $FDR < 0.1$). Out of the fourteen significant metabolic pathways, the most impactful were: Synthesis and degradation of ketone bodies, Glycine, serine and threonine metabolism, Alanine, aspartate and glutamate metabolism, D-Glutamine and D-glutamate metabolism and Arginine and proline metabolism, respectively. Fig. 2.C depicts the

metabolic pathway analysis topology. Looking to the most significant and impactful metabolites' sets and metabolic pathways, one can contemplate the large overlapping between AD and IR disorders on a metabolomics level which supports the understanding of the AD-IR pathogenic link. Perturbations in these metabolites' sets and metabolic pathways had been previously reported in AD and IR disorders [66,139,142,160,162,167,168,184,185,192,203–208].

5. AD-IR pathogenic link as a therapeutic target for AD treatment

There are several non-pharmacological and pharmacological therapeutic strategies that have been studied for AD management. However, the non-pharmacological strategies might be more effective than current pharmacological strategies [3]. Physical activity, social care, cognitive stimulation, and dietary interventions are some of the proposed lifestyle interventions. Among suggested dietary therapies are the Calorie restricted (CR) diet, intermittent fasting (IF), the low carbohydrate high fat (LCHF) diet or the Ketogenic diet and the Mediterranean (MEDT) diet. The effectiveness of some of these therapeutic approaches could be explained, in part, by their role in targeting the AD-IR pathogenic link. The current pharmacological treatments of AD do not stop the progression of the disease, yet they may manage some of the symptoms [3]. The Food and Drug Administration (FDA) approved AD-drugs manage AD symptoms by two main approaches. The first one is through the inhibition of acetylcholine esterase enzyme (AChE), an enzyme which breaks-down the acetylcholine neurotransmitter [3,252]. This increases the level of acetylcholine neurotransmitter. These drugs include donepezil, rivastigmine and galantamine. The second approach is through the antagonization of N-methyl D-aspartate (NMDA) receptor by Memantine [3]. Memantine which is FDA approved AD-drug reduces the excitatory effect of increased glutamate in subjects suffering from AD [252]. It is available alone or in combination with donepezil. A recent drug which is still under FDA review is Aducanumab which works by reducing A β in the brain [3,252]. None of the current AD-drugs targets the IR pathogenic pathway in AD. Some T2DM drugs have been proposed to play role in AD treatment [61,253–255]. This includes drugs such as metformin, sodium-glucose co-transporter-2 inhibitors (SGLT2i) or gliflozins and glucagon-like peptide-1 receptor (GLP-1) agonists [61,253,254]. In the following sub-sections, the lifestyle and the

Table 3
Enrichment ORA analysis of the AD-IR link metabotype.

	Overrepresented metabolite sets ⁽¹⁾	Implicated Metabolites ⁽²⁾	Total ⁽³⁾	Hits ⁽⁴⁾	Raw p ⁽⁵⁾	Holm p ⁽⁶⁾	FDR ⁽⁷⁾
1	Glycine and Serine Metabolism	Creatine; Betaine, Dimethylglycine; Glycine; L-Glutamic acid; L-Alanine; L-Threonine; L-Serine; Oxoglutaric acid; Ornithine; Pyruvic acid; L-Arginine	59	12	1.21E-05	0.00119	0.00119
2	Urea Cycle	L-Glutamic acid; L-Alanine; L-Aspartic acid; Oxoglutaric acid; Ornithine; Pyruvic acid; L-Arginine; L-Glutamine	29	8	4.17E-05	0.00405	0.00205
3	Ammonia Recycling	Glycine; L-Glutamic acid; L-Histidine; L-Serine; L-Aspartic acid; Oxoglutaric acid; Pyruvic acid; L-Glutamine	32	8	9.11E-05	0.00875	0.00298
4	Glucose-Alanine Cycle	D-Glucose; L-Glutamic acid; L-Alanine; Oxoglutaric acid; Pyruvic acid	13	5	0.00024	0.0228	0.00587
5	Arginine and Proline Metabolism	Creatine; Glycine; L-Glutamic acid; L-Proline; L-Aspartic acid; Oxoglutaric acid; Ornithine; Succinic acid; L-Arginine	53	9	0.000758	0.0712	0.0149
6	Alanine Metabolism	Glycine; L-Glutamic acid; L-Alanine; Oxoglutaric acid; Pyruvic acid	17	5	0.000988	0.0919	0.0161
7	Glutamate Metabolism	Glycine; L-Glutamic acid; L-Alanine; L-Aspartic acid; Oxoglutaric acid; Pyruvic acid; Succinic acid; L-Glutamine	49	8	0.00202	0.186	0.0283
8	Carnitine Synthesis	L-Carnitine; Glycine; L-Lysine; Oxoglutaric acid; Succinic acid	22	5	0.00348	0.316	0.0426
9	Aspartate Metabolism	Acetic acid; L-Glutamic acid; L-Aspartic acid; Oxoglutaric acid; L-Arginine; L-Glutamine	35	6	0.00605	0.544	0.0594
10	Warburg Effect	Citric acid; D-Glucose; L-Glutamic acid; L-Lactic acid; Oxoglutaric acid; Pyruvic acid; Succinic acid; L-Glutamine	58	8	0.00606	0.544	0.0594
11	Malate-Aspartate Shuttle	L-Glutamic acid; L-Aspartic acid; Oxoglutaric acid;	10	3	0.0109	0.96	0.0972

This Metabolites enrichment analysis was generated by MetaboAnalyst 5.0 web-based program using the shared AD-IR link metabotype metabolites' list. See Fig. 2.A and 2.B for bar chart and dot plot visualization of this analysis. (1) Only pathway metabolites' sets with $p < 0.05$ and $FDR < 0.1$ are shown in the Table. 2 Implicated metabolites from shared AD-IR link metabotype. (3) Total number of metabolites in the metabolites' set. (4) Hits: number of metabolites from the AD-IR link metabotype involved in the metabolites' set. (5) Raw p : original p value calculated from the enrichment analysis. (6) Holm p : adjusted raw p value by Holm-Bonferroni method. (7) FDR: false discovery rate.

Table 4
Metabolic pathways Analysis for the AD-IR link metabolotype.

Metabolic Pathway ⁽¹⁾	Implicated Metabolites ⁽²⁾	Total ⁽³⁾	Hits ⁽⁴⁾	Raw <i>p</i> ⁽⁵⁾	- Log (<i>p</i>) ⁽⁶⁾	Holm <i>p</i> ⁽⁷⁾	FDR ⁽⁸⁾	Impact ⁽⁹⁾
1	Aminoacyl-tRNA biosynthesis	48	15	1.19E-12	11.926	9.96E-11	9.96E-11	0.16667
2	Alanine, aspartate and glutamate metabolism	28	8	9.05E-07	6.0432	7.51E-05	3.80E-05	0.58254
3	Arginine biosynthesis	14	6	1.60E-06	5.796	0.000131	4.48E-05	0.2538
4	Butanoate metabolism	15	6	2.60E-06	5.5844	0.000211	4.69E-05	0.11111
5	Glyoxylate and dicarboxylate metabolism	32	8	2.79E-06	5.5545	0.000223	4.69E-05	0.1799
6	Glycine, serine and threonine metabolism	33	8	3.60E-06	5.4441	0.000284	5.03E-05	0.58578
7	Valine, leucine and isoleucine biosynthesis	8	4	5.19E-05	4.2852	0.004045	0.000622	0
8	D-Glutamine and D-glutamate metabolism	6	3	0.000523	3.2817	0.040249	0.005489	0.5
9	Arginine and proline metabolism	38	6	0.000834	3.0786	0.06342	0.007788	0.34441
10	Histidine metabolism	16	4	0.001122	2.95	0.084154	0.009425	0.22131
11	Citrate Cycle (TCA Cycle)	20	4	0.002726	2.5645	0.20171	0.020815	0.22801
12	Glycolysis / Gluconeogenesis	26	4	0.007335	2.1346	0.53543	0.051342	0.12971
13	Synthesis and degradation of ketone bodies	5	2	0.00885	2.0531	0.6372	0.057184	0.6
14	Nitrogen Metabolism	6	2	0.013014	1.8856	0.92396	0.078081	0

This pathway analysis was generated by MetaboAnalyst 5.0 web-based software. (1) Only metabolic pathways with $p < 0.05$ and $FDR < 0.1$ are shown in the Table 2 Implicated metabolites from the shared AD-IR link metabolotype as presented in Table 2. (3) Total number of metabolites in the pathway. (4) Hits: number of metabolites from the shared AD-IR link metabolotype involved in the pathway. (5) Raw *p*: original *p* value calculated from the pathway analysis. (6) -log (*p*): negative log of (*p*) value. (7) Holm *p*: adjusted raw *p* value by Holm-Bonferroni method. (8) FDR: false discovery rate. (9) Impact: impact of the pathway as calculated from pathway topology analysis. Pathways in bold have the highest impact (impact > 0.3).

pharmacological approaches interfering with the AD-IR pathogenic link are discussed. Fig. 3 summarizes these approaches.

5.1. Lifestyle modifications interfering with the AD-IR pathogenic link

Exercise is one of the effective non-pharmacological strategies in AD management [3,256–258]. Exercise improves physical fitness and cognitive functions in elderly AD patients [256]. It is also associated with reduced A β deposition [259]. In monkeys' model of aging, physical activity had been found to decrease brain atrophy [260]. In fact, exercise improves insulin sensitivity and glucose metabolism which is an effective lifestyle-strategy in the treatment of IR disorders and CVDs [261]. It is reasonable to contemplate that exercise mitigates the pathogenic effect of AD-IR pathway by improving glucose metabolism and insulin signaling leading to the documented positive outcomes in AD [258]. Interestingly, exercise may hamper the effect of genetic variants associated with the AD-IR pathogenic link. For instance, physical activity may have better effect on reducing A β deposition in *ApoE* ϵ 4 carriers compared to non-carriers [259]. Another example, the effect of the increased BMI risk allele *FTO*-SNP rs3751812 can be mitigated by physical activity [262]. Whether this effect can be extrapolated for AD, should be one of future investigations. On a metabolomics level, the data on variations in the metabolome of people suffering from cognitive impairment or at higher risk of AD is scarce. However, in a study which investigated serum metabolomics variations post exercise in men suffering from metabolic syndrome showed a favorable metabolic variation including improvements in BCAAs and gut microbiota derived metabolites such as choline and betaine [221]. These variations may indicate improvement in IR which can be extrapolated to AD, however further investigations are warranted.

CR diet and IF are among the proposed dietary approaches for AD management [263,264]. CR diet and IF had been studied as nutritional therapy for IR disorders such as obesity, MS and T2DM [265–267]. Both dietary approaches had shown promising results in preventing and reducing AD progression [35,264,268–270]. However, extreme CR should be considered cautiously to avoid possible negative impacts [271]. The role of CR diet and IF in AD management may be mediated by several mechanisms. CR diet and IF maintain low level of insulin due to the calorie restriction or the reduction of feeding window (feeding hours), respectively. Sustained reduction in elevated insulin levels to the baseline or the fasting insulin level breaks the vicious cycle of IR \leftrightarrow Hyperinsulinemia and thus improves insulin sensitivity and glucose metabolism. Accordingly, this interferes with the AD-IR pathogenic link. Essentially, CR diet and IF reduce blood glucose, blood pressure, IR, hyperinsulinemia, and inflammation which are risk factors of AD development [267,269,272,273]. Furthermore, autophagy, the process of body's self-renovation and recycling, is induced by CR diet and IF [274,275]. This increases longevity and reduces aging effects. Dysfunction of autophagy leads to neuronal cell death which is common pathogenic feature in neurodegenerative diseases such as AD and Parkinson's disease (PD) [275]. Therefore, dietary approaches which induce autophagy such as CR and IF can play vital role in AD management by confronting neuronal death and neuronal aging. CR diet prevents amyloid plaque development [35,264,268–270]. IF promotes A β removal from the brain [276]. Both CR diet and IF increase the level of ketone bodies such as β -hydroxybutyrate (β HB) which has several therapeutic roles in improving AD symptoms [276,277]. The role of β HB in AD management is furtherly discussed in the following paragraph as we discuss the ketogenic diet. It is worthy to mention that the CR diet with focus on limiting calories from carbohydrates mediated modulation

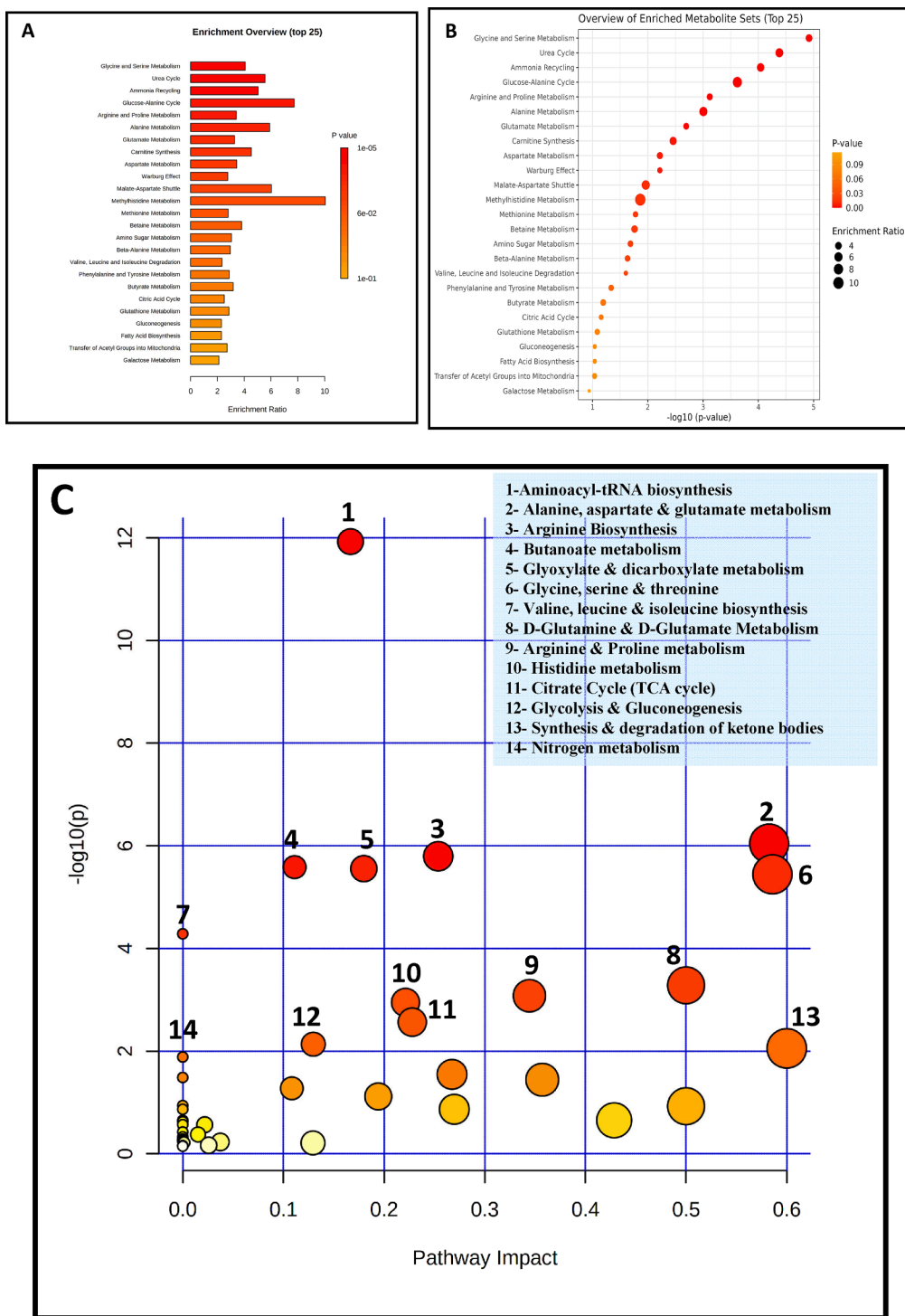


Fig. 2. Over representation Enrichment analysis and metabolic pathway analysis of the AD-IR link metabotype as generated by MetaboAnalyst 5.0 web-based software.

Fig. 2.A: Bar chart view of the over representation Enrichment overview based on Small Molecule Pathway Database (SMPDB). Metabolites' sets in the over representation Enrichment analysis are sorted based on fold enrichment and *p* value. Glycine and Serine Metabolism, Urea Cycle, Ammonia Recycling, Glucose-Alanine Cycle and Arginine and Proline Metabolism had the most significance, respectively. Refer to Table 3 for further details on each metabolites' set - related metabolites, *p* value and FDR value of each metabolites' set. Fig. 3.B: Dot Plot view of the over representation Enrichment overview based on Small Molecule Pathway Database (SMPDB). Metabolites' sets are sorted based on fold enrichment and *p* value. Glycine and Serine Metabolism, Urea Cycle, Ammonia Recycling, Glucose-Alanine Cycle and Arginine and Proline Metabolism had the most significance, respectively. Refer to Table 3 for further details on each metabolites' set - related metabolites, *p* value and FDR value of each metabolites' set. Fig. 2.C: Pathway analysis of the AD-IR link metabotype metabolites based on the Kyoto Encyclopaedia of Genes and Genomes (KEGG) showed that Aminoacyl-tRNA biosynthesis followed by Alanine, aspartate and glutamate metabolism had the highest significance, while Synthesis and degradation of ketone bodies followed by Glycine, serine and threonine had the highest impact. Refer to Table 4 for further details on each pathway: related metabolites, *p* value, FDR value and impact.

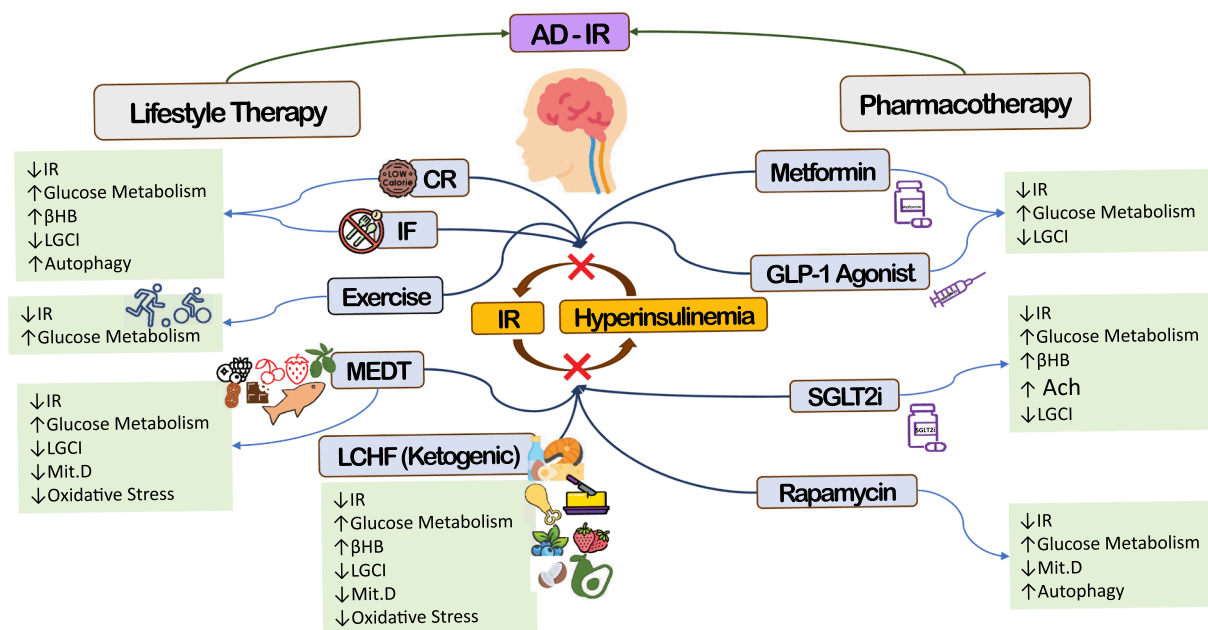


Fig. 3. Therapeutic approaches targeting AD-IR Link and their proposed Mechanisms.

The pathogenic link between AD and IR disorders can be targeted with lifestyle and pharmacological therapies. This will help to break the vicious cycle of IR ↔ Hyperinsulinemia and thereupon interfere with the AD-IR pathogenic link. ↑: indicates Increase or Improve. ↓: indicates Decrease or Inhibit. Abbreviations, IR: Insulin Resistance, AD: Alzheimer's diseases, CR: Calorie restriction, IF: Intermittent Fasting, LGCI: Low grade chronic inflammation, MEDT: Mediterranean Diet, Mit. D: Mitochondrial Dysfunction, LCHF: Low carbohydrates high fat diet, SGLT2i: Sodium-glucose Cotransporter 2 Inhibitors, GLP-1: glucagon-like peptide 1, βHB: β-hydroxybutyrate and ACh: Acetylcholine. CR, IF, brain, blue berries, strawberry, butter and coconut icons from www.flaticon.com. (For interpretation of the references to colour in this figure legend, the reader is referred to the web version of this article.)

of gut microbiota favoring AD reversal in female mice [278]. There are CR mimetic compounds such as resveratrol and rapamycin which mimic the therapeutic effect of CR diet on AD [269]. These compounds are expected to have auspicious role in AD management warranting further study.

The role of the ketogenic diet or the low carbohydrate healthy fat (LCHF) diet in the nutritional therapy of AD has gained attention [130,279–282]. LCHF diet focuses on reducing carbohydrates, maintaining moderate protein and allowing healthy fat up to satiation [277,283,284]. Since carbohydrates is restricted on the LCHF diet, low level of insulin is maintained which shifts energy metabolism towards fat metabolism and ketogenesis [277,283,285,286]. Ketogenesis usually happens in the liver, and it includes the formation of ketone bodies from fatty acids derived from endogenous and exogenous fat [277,282,283,286]. Ketogenic (i.e., LCHF) diet is an effective nutritional therapy option for pharmacological-resistant epilepsy [287,288]. LCHF diet has beneficial effects on the fundamental clinical features of IR disorders. It improves glucose metabolism, reduces IR and normalizes HbA1c as well as decreasing medications use in T2DM patients [283,284,289–291]. Furthermore, it is effective in reducing inflammation, oxidative stress, dyslipidemia, and excess weight in subjects suffering from IR disorders such as MS and obesity [292–295]. LCHF diet enhances cardiac biomarkers and reduces cardiovascular risk in individuals enduring IR disorders [292–296]. Therefore, it has been recommended by several guidelines as one of the nutritional therapy options for T2DM [297–300]. LCHF diet role in the nutritional therapy of AD is achieved through more than one plausible mechanism. First, restricting carbohydrates maintains low insulin level which increases insulin sensitivity (i.e., decreases IR) [286]. Reducing IR will lead to subsequent further reduction in the peripheral insulin level which in turn will hamper the detrimental effect of hyperinsulinemia on the brain [25,27,301]. Second, it normalizes blood glucose level which will limit the effect of elevated blood glucose in the AD-IR pathogenic link as discussed earlier in this review [25,301]. Third, ketogenesis is induced by LCHF diet which leads to the production of ketone bodies such as

acetoacetate and βHB [277,286]. The latest breeds several curative pathways in CMDs diseases including IR disorders and CVDs [40,277]. In fact, βHB has vasodilating effect [302–304]. Besides, it reduces oxidative stress, inflammation, and IR, as well as it improves mitochondrial respiration [277,281,302–304]. These beneficial effects not only hamper AD risk factors but also reduce AD progression [281]. βHB serves as an energy source in the brain, particularly for cells suffering from IR [301,305,306]. Fourth, metabolism of fatty acids in the mitochondria generates Acetyl-Co-A [286] which is important for the synthesis of acetylcholine. Since cholinergic perturbations, in particular reduced acetylcholine synthesis, is involved in AD pathogenesis [9,10], it is reasonable to conceptualize that LCHF diet increases acetylcholine synthesis through increasing Acetyl-Co-A availability. Fifth, the abundance of fatty acids on a restricted carbohydrate diet (i.e., LCHF diet), particularly if enriched with medium chain triglycerides (MCT) reduces Aβ levels and improves cognitive ability [285,306,307]. The role of MCT was highly significant in carriers of *ApoE ε4* [307]. Besides, MCT consumption was associated with elevation in ketone bodies (β-hydroxybutyrate and acetoacetate). Sixth, the ketogenic diet enhances the biogenesis of mitochondria which improves brain metabolism [308]. Lastly, similar to the CR and IF, the ketogenic diet induces autophagy [275]. As previously discussed in this review, autophagy reduces neuronal death and neuronal aging. Considering the aforementioned mechanisms, the favorable effect of LCHF diet in AD treatment is promising. Therefore, and not surprisingly, the LCHF diet had been found to increase daily function and quality of life in AD patients [301]. It also had positive effects on CVDs risk components such as the level of high density lipoprotein (HDL). In a recent systematic review, the LCHF diet was found effective in reducing AD cognitive symptoms [309]. Similarly, Lilamand and colleagues narrated an updated review of 12 preclinical and clinical studies of LCHF diet in AD treatment [305]. LCHF diet reduced cerebral inflammation, Aβ and tau protein hyperphosphorylation in preclinical studies. In clinical studies, it showed improvements in cognitive functions, brain metabolisms, and AD biomarkers. The metabolomics variations following the exposure to LCHF

diet has been investigated in several diseases such as epilepsy, cancer, and psoriasis [310–312]. However, the metabolomics data is limited in regard to the application of the LCHF in AD. Nonetheless, the LCHF exposure metabolomics studies in other diseases indicated perturbations in some of the common metabolic biomarkers between AD and IR disorders. For instance, LCHF diet exposure led to reductions in ceramides, lactic acid, isoleucine, leucine, and alanine which are known metabolic biomarkers of AD, as shown in Table 2 [310–312]. Considering the aforementioned mechanisms for the therapeutic role of LCHF diet in the treatment of IR disorders and AD as well as the effectiveness shown in preclinical and clinical studies, one could speculate that incorporating LCHF diet in AD management is hopeful. However, long-term clinical studies to assess metabolic biomarkers and symptoms' improvement are warranted.

The Mediterranean (MEDT) diet has been investigated in the protection and management of IR disorders and AD [313–319]. MEDT diet is one of the effective nutritional therapy in IR disorders (T2DM, MS, obesity) and CVDs, particularly when designed to restrict carbohydrates and enrich certain dietary components such as nuts, olive oil and berries on their meal plans [313–315,320–322]. Similarly, adherence to the MEDT is associated with lower risk of cognitive decline and AD [316,317,323]. In regard to the AD-IR pathogenic link, there are several plausible explanations to the role of the MEDT in reducing cognitive decline and improving AD symptoms. MEDT diet is prosperous with fatty fish, extra virgin olive oil, seeds, nuts, vegetables, berries fruits, fibers, and resistant starch [313–315,324]. Many of those dietary components play vital role in reducing inflammation, oxidative stress, and IR [324,325]. Berries fruits, extra virgin olive oil, nuts, dark chocolate, and green tea are rich in polyphenol compounds which had been found effective in reducing IR and inflammation as well as improving lipid profile in subjects suffering from CMDs diseases [326–328]. This largely explains their nutritional therapy role in reducing cardiovascular risk in subjects suffering from IR disorders [328,329]. Comparably, they are competent in improving cognitive decline [323,330]. Besides their anti-inflammatory, anti-oxidant, and insulin sensitization roles, polyphenols have anti-amyloidogenic activity and they interfere with tau hyperphosphorylation and accumulation [324,331]. In a meta-analysis of 80 randomized clinical trials (RCT), dietary flavonoids, a class of polyphenols, had positive effect on cognitive performance, particularly flavonoids from MEDT dietary components such as cocoa, ginkgo and berries [323]. One of the main dietary polyphenols which is found in olive oil, grapes, pistachios, cocoa, and berries has been extensively studied in AD [332]. Resveratrol is an anti-inflammatory, anti-oxidant, and epigenetic and mitochondrial modulator [332,333]. Resveratrol has been shown to improve insulin sensitization and both glucose and lipid metabolism [334]. Resveratrol has a CR mimetic effect and reduces age related deterioration [335]. Resveratrol has a cardioprotective role by reducing mitochondrial and endothelial dysfunction and increasing endothelial production of NO [333,336,337]. As previously mentioned, reduction in NO is implicated in endothelial dysfunction and reduced cerebral blood flow, one of the pathogenic pathways of AD [195]. Besides, resveratrol modulates gut microbiota which reduces the synthesis of the gut derived metabolite TMAO, an effect which can lead to reduced atherosclerosis [159]. Furthermore, resveratrol has autophagy induction and antiaging properties [338–340]. Such pleiotropic effects of resveratrol explain great portion of its positive role in improving cognitive function [332]. Noteworthy, resveratrol induced favorable metabolomics changes in diet-induced metabolic syndrome model in mice [341]. In addition to the promising effect of polyphenols, the MEDT dietary components such as fish, nuts and extra virgin olive oil are rich in the Omega 3 long-chain polyunsaturated fatty acids which have crucial role in the prevention of CVDs and cognitive decline [324]. Omega 3 fatty acids are known for their anti-inflammatory function which is critical for cardiac and cognitive protection [325]. Since both the MEDT and the Ketogenic diet showed promising results as a preventive and probably treatment lifestyle intervention for AD, the

combination of both diets or the modification of the MEDT diet with food components from the LCHF (Ketogenic) diet had gained scientific interest [130,280,342]. For instance, the enrichment of MEDT diet with coconut oil improved cognitive functions in AD patients [316]. Coconut oil, an MCT rich fat, increases the production of ketone bodies such as, β HB which is effective in reducing inflammation and IR as well as it can be used as an alternative source of energy in IR- areas of the brain. There is also the Spanish Ketogenic Mediterranean Diet (SKMD) or the modified Mediterranean ketogenic diet (MMKD) which is a ketogenic diet (i. e., LCHF diet) where its main protein source is fish and the extra virgin olive oil is a main source of fat [130,343]. This diet has been found effective in reducing cardiovascular risk factors and improving glucose metabolism [343]. Furthermore, it had been found associated with favorable modulation of gut microbiota and improvement of AD biomarkers in the cerebrospinal fluids (CSF) [130]. Nutrimetabolomics studies showed that the MEDT diet remitted ceramides, BCAAs and acylcarnitines in CVDs [321,322,344]. These metabolites are associated with AD and IR disorders as demonstrated in Table 2. Nuts such as almond and pistachios represent important portion of a well-designed MEDT meal plan. They were found to modulate gut microbiota and remit microbiota dysbiosis metabolic biomarkers such as TMAO, Hippurate and 4-cresol in IR disorders [345,346]. Similarly, blueberries consumption reduced methylamines (TMA & DMA), acetone, acetoacetate and succinate in IR disorders [347]. MEDT dietary fibers such as arabinoxylan and resistant starch modulated dysbiotic gut microbiota and increased fecal SCFAs such as acetate and butyrate in subjects suffering from MS [166]. In a pilot randomized cross-over study comparing the MMKD to the American Heart Association (AHA) diet, it was found that the MMKD increased fecal propionate and butyrate, however, it reduced acetate and lactate [130]. As previously discussed, SCFAs compounds improve insulin sensitivity which in turn may play vital role in targeting the IR-AD pathogenic link [130,164,165]. Considering the aforementioned therapeutic targets and the metabolomics variations post MEDT dietary intervention in AD, it could be well conceptualized that a well-designed MEDT plan enriched with certain foods or modified to the SKMD or the MMKD is auspicious nutritional therapy approach.

5.2. Pharmacological treatments interfering with the AD-IR pathogenic link

Several T2DM medications have been proposed for AD-pharmacological therapy. These drugs work by strategies such as reducing blood glucose, IR, oxidative stress, inflammation, and cardiovascular events as well as increasing acetylcholine and ketone bodies [61,253,254]. Metformin is the first line T2DM medication since it works on the root cause of T2DM by increasing sensitivity to insulin which will lead to subsequent reduction in peripheral hyperinsulinemia [348]. Furthermore, metformin has cardioprotective role by reducing atherosclerosis and platelets reactivity which thereupon reduces cardiovascular and cerebrovascular events [349–351]. Metformin has been suggested for the treatment of AD [254]. Metformin was found to increase life span and healthy aging in mice [352]. The AD protective role of metformin can be attributed to its role in reducing IR, atherosclerosis, oxidative stress, inflammation, mitochondrial dysfunction, and ailing aging [254,350,353–355]. Metformin has been investigated in several IR disorders metabolomics studies. In a urine metabolomics rat-model study, metformin altered several gut-microbiota derived metabolites as well as other metabolites from the shared AD-IR linked metabolites presented in Table 2 [356]. In another diabetic rat-model study, metformin normalized the diabetic pattern through modulating more than 15 metabolites of the AD-IR shared metabolites [229]. In a review by Kim [357], he indicated that metformin altered many of the metabolic biomarkers of IR including large number of the shared metabolic biomarkers presented in Table 2 in the current review. Future metabolomics studies investigating the role of metformin in AD prevention and

treatment including variations in the human metabolome worth further study.

Gliflozins or SGLT2i such as empagliflozin, dapagliflozin and canagliflozin exert their anti-diabetic effect through the inhibition of SGLT2 enzyme which reduces the reabsorption of glucose by renal tubules [358]. This causes increased excretion of glucose, and hence reducing blood glucose and IR. While reducing blood glucose and IR has a neuroprotective effect, SGLT2i may help improving AD through several other mechanisms [61,253]. First, SGLT2i reduces blood glucose, thus targeting one of the detrimental pathogenic pathways in the AD-IR link [358]. Second, SGLT2i reduces IR and hence decreases peripheral hyperinsulinemia, thereupon targets fundamental element in the AD-IR link [358]. Third, SGLT2i increases the level of ketone bodies such as β HB which can be used as an alternative fuel for IR areas in the brain [253,305,306,358]. As previously discussed in this review, β HB reduces oxidative stress, inflammation and has vasodilating effect [302,303]. These factors, in turn decrease the risk for cardiovascular and cerebrovascular events which are risk factors of AD [302,303,358]. Fourth, besides the inhibitory effect of gliflozins on the SGLT2 transporter, they possess inhibitory effect on acetylcholine esterase enzyme (AChE), the degrading enzyme of acetylcholine [255,359]. Accordingly, this increases the level of brain acetylcholine which is one of the crucial AD treatment strategies. Taken together, it can be speculated that SGLT2i drugs have promising role in AD management meriting further investigation for effectiveness and safety. Metabolomics studies investigating SGLT2i effect in T2DM and Type one DM (T1DM) indicated metabolomics variations post exposure [360–362]. In a study by Mulder and colleagues, dapagliflozin led to increase in 9 out of 13 urinary metabolites that has been linked to mitochondrial dysfunction in T2DM patients [361]. In another recent metabolomics study, T2DM patients had elevated levels of BCAAs, lactate, betaine, myoinositol and ketone bodies in urine post-dapagliflozin treatment [362]. In a metabolomics study on T1DM, empagliflozin led to significant metabolic pathway variations in plasma and urine [360]. The metabolomics variations proposed mitochondrial function improvement post empagliflozin use in T1DM. To the best of our knowledge, there is no study investigating SGLT2i metabolomics effect in AD. In this context, it is worthy to mention that SGLT2i should be used with caution due to its well-established euglycemic ketoacidosis side effect [358,363]. Therefore, SGLT2i is not advocated in people following dietary approaches that may increase ketone bodies' levels such as the LCHF (Ketogenic) diet to avoid developing of ketoacidosis [364]. Furthermore, judicial clinical decision should consider SGLT2i risk of fractures on the early weeks of treatment, particularly in elderly since they are at higher risk of falls and fractures [365]. Collectively, SGLT2i may play effective role in AD treatment. However, further clinical studies are required.

Similar to Metformin and SGLT2i, the GLP-1 agonists are T2DM drugs which have been recently proposed for the treatment of AD [366]. Liraglutide is one of the commonly used GLP-1 agonists in clinical practice in T2DM and obesity and it recently gained attention in AD. Its role in AD can be linked to the improvements in glucose metabolism and insulin signaling as well as the reduction of IR and inflammation [367]. Clinicians are looking forward for the results of an ongoing clinical trial of liraglutide in AD patients [368]. On a metabolic biomarkers' level, a study of two weeks treatment of liraglutide in diet-induced-obesity mice indicated favorable perturbations in several obesity related metabolites such as nicotinamide and taurine [244]. These metabolites were associated with obesity, fat, glucose intolerance and leptin levels [244]. Considering that these metabolites are shared between AD and other IR disorders as early elucidated in this review (Table 2), it can be speculated that liraglutide may have promising role in AD treatment. Again, further clinical investigations are warranted to evaluate liraglutide effectiveness and safety in AD treatment.

Rapamycin (Sirolimus) is an inhibitor drug for the mechanistic target of rapamycin kinase (mTOR) which has been proposed for AD management [369]. Rapamycin targets the aging process through mTOR

inhibition which leads to autophagy induction and mitochondrial modulation [370,371]. Similar to resveratrol, rapamycin mimics the therapeutic effect of CR diet and IF [269]. Rapamycin reduced IR in T2DM rats [371]. It also improved cardiac function in aged mice [372]. Thus, it may have promising effect in AD, particularly if combined with dietary approaches such as LCHF or MEDT diet. However, the clinical studies as well as the metabolomics investigations on rapamycin use in AD are scarce which limits the current recommendation of it.

6. Conclusion

It can be concluded that AD and IR disorders are extremely linked. The link between AD and IR disorders is multifactorial where genetic and environmental factors are shared and implicated in their pathogenesis. The presence of more than one factor, including polymorphisms, has an additive effect in the development of the disease course often hindering management. Metabolomics biomarkers shed more light on the implicated pathways in the AD-IR pathogenic link. If used effectively, metabolomics biomarkers may offer early detection of the disease and follow-up of the treatment. However, metabolomics studies assessing treatment approaches are scarce. The pathogenic link between AD and IR disorders may be fended with nutritional and pharmacological treatments. Metabolomics analysis offers fast and reliable method to follow up treatment efficacy. However, further researching is warranted. Whether AD management plan that apply-one or more of dietary approaches such as CR, IF, LCHF and MEDT, in addition to pharmacological drugs targeting AD-IR link is effective and safe warrants further investigations.

CRedit authorship contribution statement

Arwa M. Amin: Conceptualization, Writing – original draft. **Hamza Mostafa:** Visualization. **Hani M.J. Khojah:** Visualization.

Declaration of Competing Interest

The authors declare that they have no known competing financial interests or personal relationships that could have appeared to influence the work reported in this paper.

Data availability

No data was used for the research described in the article.

Acknowledgements

The authors declare that there is no conflict of interest. There is no funding for this paper.

References

- [1] CDC WONDER, National Vital Statistics System – Underlying Cause of Death, 1999-2020 Results via CDC WONDER in: U.S.D.o.H.a.H. Services (Ed.) Centers for Disease Control and Prevention, National Center for Health Statistics, US, 2020.
- [2] World Health Organization, Fact Sheets: Dementia, 2020. <https://www.who.int/news-room/fact-sheets/detail/dementia#:~:text=Worldwide%2C%20around%2050%20million%20people,dependency%20among%20older%20people%20worldwide>. (Accessed 1/1/2021 2021).
- [3] A. Association, 2021 Alzheimer's disease facts and figures, *Alzheimers Dement.* 17 (3) (2021) 327–406.
- [4] P. d'Errico, M. Meyer-Luehmann, Mechanisms of pathogenic tau and β protein spreading in Alzheimer's disease, *frontiers in aging, Neuroscience* 12 (2020).
- [5] A. Kumar, A. Singh, Ekavali, A review on Alzheimer's disease pathophysiology and its management: an update, *Pharmacological Reports* 67(2) (2015) 195-203.
- [6] Stoyanova, I., Ghrelin: a link between ageing, metabolism and neurodegenerative disorders, *Neurobiol Dis* 72 Pt A (2014) 72-83.
- [7] L. Pini, M. Pievani, M. Bocchetta, D. Altomare, P. Bosco, E. Cavedo, S. Galluzzi, M. Marizzoni, G.B. Frisoni, Brain atrophy in Alzheimer's Disease and aging, *Ageing Res. Rev.* 30 (2016) 25–48.

- [8] A. Garnier-Crussard, S. Bougacha, M. Wirth, S. Dauricourt, S. Sherif, B. Landeau, J. Gonneaud, R. De Flores, V. de la Sayette, D. Vivien, P. Krolak-Salmon, G. Chételat, White matter hyperintensity topography in Alzheimer's disease and links to cognition, *Alzheimers Dement.* 18 (3) (2022) 422–433.
- [9] E.J. Rivera, A. Goldin, N. Fulmer, R. Tavares, J.R. Wands, S.M. de la Monte, Insulin and insulin-like growth factor expression and function deteriorate with progression of Alzheimer's disease: Link to brain reductions in acetylcholine, *J. Alzheimer's Disease* 8 (3) (2005) 247–268.
- [10] P.T. Francis, The interplay of neurotransmitters in Alzheimer's disease, *CNS Spectr.* 10 (S18) (2005) 6–9.
- [11] X. Pan, A.C. Kaminga, P. Jia, S.W. Wen, K. Acheampong, A. Liu, Catecholamines in Alzheimer's disease: a systematic review and meta-analysis, *Front. Aging Neurosci.* 12 (2020), 184–184.
- [12] H.N. Yassine, A. Anderson, R. Brinton, O. Carmichael, M.A. Espeland, S. Hoscheidt, C.E. Hugenschmidt, J.N. Keller, A. Peters, X. Pi-Sunyer, Do menopausal status and APOE4 genotype alter the long-term effects of intensive lifestyle intervention on cognitive function in women with type 2 diabetes mellitus? *Neurobiol. Aging* 92 (2020) 61–72.
- [13] S.C. Neu, J. Pa, W. Kukull, D. Beekly, A. Kuzma, P. Gangadharan, L.-S. Wang, K. Romero, S.P. Arneric, A. Redolfi, D. Orlandi, G.B. Frisoni, R. Au, S. Devine, S. Auerbach, A. Espinosa, M. Boada, A. Ruiz, S.C. Johnson, R. Kosciak, J.-J. Wang, W.-C. Hsu, Y.-L. Chen, A.W. Toga, Apolipoprotein E genotype and sex risk factors for Alzheimer Disease: a meta-analysis, *JAMA Neurol.* 74 (10) (2017) 1178–1189.
- [14] A.M. Kulminski, Y. Loika, I. Culminkaya, J. Huang, K.G. Arbee, O. Bagley, M. F. Feitosa, J.M. Zmuda, K. Christensen, A.I. Yashin, G., Long Life Family Study Research, Independent associations of TOMM40 and APOE variants with body mass index, *Aging Cell* 18 (1) (2019) e12869–e.
- [15] Q. Tao, T.F.A. Ang, C. DeCarli, S.H. Auerbach, S. Devine, T.D. Stein, X. Zhang, J. Massaro, R. Au, W.Q. Qiu, Association of chronic low-grade inflammation with risk of Alzheimer disease in ApoE4 carriers, *JAMA Netw. Open* 1 (6) (2018) e183597–e.
- [16] M. Malek-Ahmadi, T. Beach, A. Obradov, L. Sue, C. Belden, K. Davis, D.G. Walker, L. Lue, A. Adem, M.N. Sabbagh, Increased Alzheimer's disease neuropathology is associated with Type 2 diabetes and ApoE ε4 carrier status, *Curr. Alzheimer Res.* 10 (6) (2013) 654–659.
- [17] M. Aghajpour-Mir, F. Amjadi-Moheb, T. Dadkhah, S.R. Hosseini, E. Ghadami, E. Assadollahi, H. Akhavan-Niaki, A. Ahmadi Ahangar, Informative combination of CLU rs11136000, serum HDL levels, diabetes, and age as a new piece of puzzle-pictur of predictive medicine for cognitive disorders, *Mol. Biol. Rep.* 46 (1) (2019) 1033–1041.
- [18] O. Šerý, L. Hlinceká, V.J. Balcar, V. Janout, J. Povova, Diabetes, hypertension and stroke - does Alzheimer protect you? *Neuro Endocrinol. Lett.* 35 (8) (2014) 691–696.
- [19] N. Ogama, T. Sakurai, S. Kawashima, T. Tanikawa, H. Tokuda, S. Satake, H. Miura, A. Shimizu, M. Kokubo, S. Niida, K. Toba, H. Umegaki, M. Kuzuya, Postprandial hyperglycemia is associated with white matter hyperintensity and brain atrophy in older patients with type 2 diabetes mellitus, *Front. Aging Neurosci.* 10 (2018).
- [20] L. Mosconi, V. Berti, C. Quinn, P. McHugh, G. Petrongolo, R.S. Osorio, C. Connaughty, A. Pupi, S. Vallabhajosula, R.S. Isaacson, M.J. de Leon, R. H. Swerdlow, R.D. Brinton, Perimenopause and emergence of an Alzheimer's bioenergetic phenotype in brain and periphery, *PLoS One* 12 (10) (2017) e0185926–e.
- [21] R.F.A.G. de Bruijn, M.A. Ikram, Cardiovascular risk factors and future risk of Alzheimer's disease, *BMC Med.* 12 (2014), 130–130.
- [22] J. Leszek, E.V. Mikhaylenko, D.M. Belousov, E. Koutsouraki, K. Szczechowiak, M. Kobusiak-Prokopowicz, A. Mysiak, B.S. Diniz, S.G. Somasundaram, C. E. Kirkland, The links between cardiovascular diseases and Alzheimer's disease, *Curr. Neuropharmacol.* 19 (2) (2021) 152–169.
- [23] G. Tini, R. Scagliola, F. Monacelli, G. La Malfa, I. Porto, C. Brunelli, G.M. Rosa, Alzheimer's disease and cardiovascular disease: a particular association, *Cardiol. Res. Pract.* 2020 (2020) 2617970.
- [24] E. Rojas-Gutierrez, G. Muñoz-Arenas, S. Treviño, B. Espinosa, R. Chavez, K. Rojas, G. Flores, A. Díaz, J. Guevara, Alzheimer's disease and metabolic syndrome: A link from oxidative stress and inflammation to neurodegeneration, *71(10)* (2017) e21990.
- [25] D. Bosco, A. Fava, M. Plastino, T. Montalcini, A. Pujia, Possible implications of insulin resistance and glucose metabolism in Alzheimer's disease pathogenesis, *J. Cell Mol. Med.* 15 (9) (2011) 1807–1821.
- [26] Z. Chen, C. Zhong, Decoding Alzheimer's disease from perturbed cerebral glucose metabolism: implications for diagnostic and therapeutic strategies, *Prog. Neurobiol.* 108 (2013) 21–43.
- [27] S. Craft, B. Cholerton, L.D. Baker, Insulin and Alzheimer's disease: untangling the web, *J. Alzheimer's Disease: JAD* 33 (Suppl 1) (2013) S263–S275.
- [28] E. Alkan, T.P. Taporoski, A. Sterr, M. von Schantz, H. Vallada, J.E. Krieger, A. C. Pereira, R. Alvim, A.R.V.R. Horimoto, S. Pompéia, A.B. Negrão, S.L.H. Evans, Metabolic syndrome alters relationships between cardiometabolic variables, cognition and white matter hyperintensity load, *Sci. Rep.* 9 (1) (2019) 4356.
- [29] F. Ahmed, J.A. Ansari, Z.E. Ansari, Q. Alam, S.H. Gan, M.A. Kamal, E. Ahmad, A molecular bridge: connecting type 2 diabetes and Alzheimer's disease, *CNS & Neurol. Disorders Drug Targets* 13 (2) (2014) 312–321.
- [30] M.A. Kamal, S. Priyamvada, A.N. Anbazhagan, N.R. Jabir, S. Tabrez, N.H. Greig, Linking Alzheimer's disease and type 2 diabetes mellitus via aberrant insulin signaling and inflammation, *CNS & Neurol. Disorders Drug Targets* 13 (2) (2014) 338–346.
- [31] N. Pannacciulli, A. Del Parigi, K. Chen, D.S. Le, E.M. Reiman, P.A. Tataranni, Brain abnormalities in human obesity: a voxel-based morphometric study, *Neuroimage* 31 (4) (2006) 1419–1425.
- [32] C.A. Raji, A.J. Ho, N.N. Parikshak, J.T. Becker, O.L. Lopez, L.H. Kuller, X. Hua, A. D. Leow, A.W. Toga, P.M. Thompson, Brain structure and obesity, *Human Brain Mapping* 31 (3) (2010) 353–364.
- [33] A.J. Ho, J.L. Stein, X. Hua, S. Lee, D.P. Hibar, A.D. Leow, I.D. Dinov, A.W. Toga, A.J. Saykin, L. Shen, T. Foroud, N. Pankratz, M.J. Huentelman, D.W. Craig, J.D. Gerber, A.N. Allen, J.J. Corneveaux, D.A. Stephan, C.S. DeCarli, B.M. DeChairo, S. G. Potkin, C.R. Jack, Jr., M.W. Weiner, C.A. Raji, O.L. Lopez, J.T. Becker, O.T. Carmichael, P.M. Thompson, A commonly carried allele of the obesity-related FTO gene is associated with reduced brain volume in the healthy elderly, *Proceedings of the National Academy of Sciences of the United States of America* 107(18) (2010) 8404–9.
- [34] X.-F. Wang, X. Lin, D.-Y. Li, R. Zhou, J. Greenbaum, Y.-C. Chen, C.-P. Zeng, L.-P. Peng, K.-H. Wu, Z.-X. Ao, J.-M. Lu, Y.-F. Guo, J. Shen, H.-W. Deng, Linking Alzheimer's disease and type 2 diabetes: novel shared susceptibility genes detected by cFDR approach, *J. Neurol. Sci.* 380 (2017) 262–272.
- [35] J. Bressler, M. Fornage, E.W. Demerath, D.S. Knopman, K.L. Monda, K.E. North, A. Penman, T.H. Mosley, E. Boerwinkle, Fat mass and obesity gene and cognitive decline, *The Atherosclerosis Risk Commun. Study* 80 (1) (2013) 92–99.
- [36] W.Q. Qiu, M.F. Folstein, Insulin, insulin-degrading enzyme and amyloid-beta peptide in Alzheimer's disease: review and hypothesis, *Neurobiol. Aging* 27 (2) (2006) 190–198.
- [37] A.M. Amin, Metabolomics applications in coronary artery disease personalized medicine, *Adv. Clin. Chem.* 102 (2021) 233–270.
- [38] J. Ivanisevic, A. Thomas, Metabolomics as a Tool to Understand Pathophysiological Processes, in: M. Giera (Ed.), *Clinical Metabolomics: Methods and Protocols*, Springer, New York, New York, NY, 2018, pp. 3–28.
- [39] O.D. Rangel-Huerta, A. Gil, Nutrimentalomics: an update on analytical approaches to investigate the role of plant-based foods and their bioactive compounds in non-communicable chronic diseases, *Int. J. Mol. Sci.* 17 (12) (2016) 2072.
- [40] A.M. Amin, The metabolic signatures of cardiometabolic diseases: does the shared metabolite offer new therapeutic targets? *Lifestyle Med.* 2 (1) (2021) e25.
- [41] H.N. Frazier, A.O. Ghoweri, K.L. Anderson, R.L. Lin, N.M. Porter, O. Thibault, Broadening the definition of brain insulin resistance in aging and Alzheimer's disease, *Exp. Neurol.* 313 (2019) 79–87.
- [42] L.S.S. Ferreira, C.S. Fernandes, M.N.N. Vieira, F.G. De Felice, Insulin resistance in Alzheimer's disease, *Front. Neurosci.* 12 (830) (2018).
- [43] C. Sims-Robinson, B. Kim, E.L. Feldman, Chapter 13 - Diabetes and Cognitive Dysfunction, in: M.J. Zigmond, L.P. Rowland, J.T. Coyle (Eds.), *Neurobiology of Brain Disorders*, Academic Press, San Diego, 2015, pp. 189–201.
- [44] T. Imamura, Y.T. Yanagihara, Y. Ohayagi, N. Nakamura, K.M. Iinuma, R. Yamasaki, H. Asai, M. Maeda, K. Murakami, K. Irie, J.-I. Kira, Insulin deficiency promotes formation of toxic amyloid-β42 conformer co-aggregating with hyper-phosphorylated tau oligomer in an Alzheimer's disease model, *Neurobiol. Disease* 137 (2020), 104739.
- [45] S.E. Kahn, R.L. Hull, K.M. Utzschneider, Mechanisms linking obesity to insulin resistance and type 2 diabetes, *Nature* 444 (7121) (2006) 840–846.
- [46] M.H. Shanik, Y. Xu, J. Škrha, R. Dankner, Y. Zick, J. Roth, Insulin Resistance and Hyperinsulinemia, Is hyperinsulinemia the cart or the horse? *31(Supplement 2)* (2008) S262-S268.
- [47] S.H. Kim, G.M.J.D.c. Reaven, Insulin resistance and hyperinsulinemia: you can't have one without the other, *31(7)* (2008) 1433–1438.
- [48] S.S. Anand, M.G. Friedrich, D. Desai, K.M. Schulze, P. Awadalla, D. Busseuil, T.J. B. Dummer, S. Jacquemont, A. Dick, D. Kelton, A. Kirpalani, S.A. Lear, J. Leipsic, M.D. Noseworthy, L. Parker, G. Parraga, P. Poirier, P. Robson, J.C. Tardif, K. Teo, J. Vena, S. Yusuf, A.R. Moody, S.E. Black, E.E. Smith, Reduced cognitive assessment scores among individuals with magnetic resonance imaging-detected vascular brain injury, *Stroke* 51 (4) (2020) 1158–1165.
- [49] V. Ormazabal, S. Nair, O. Elfeky, C. Aguayo, C. Salomon, F.A. Zuñiga, Association between insulin resistance and the development of cardiovascular disease, *Cardiovascul. Diabetol.* 17 (1) (2018) 122.
- [50] R.J. Mullins, T.C. Diehl, C.W. Chia, D. Kapogiannis, Insulin Resistance as a Link between Amyloid-Beta and Tau Pathologies in Alzheimer's Disease, *Front. Aging Neurosci.* 9 (2017), 118–118.
- [51] L. Xie, E. Helmerhorst, K. Taddei, B. Plewright, W. Van Bronswijk, R. Martins, Alzheimer's beta-amyloid peptides compete for insulin binding to the insulin receptor, *J Neurosci* 22(10) (2002) R221.
- [52] S. Wang, F. He, Y. Wang, Association between polymorphisms of the insulin-degrading enzyme gene and late-onset Alzheimer disease, *J. Geriatr. Psychiatry Neurol.* 28 (2) (2015) 94–98.
- [53] P. Cai, W. Zhong, M. Jia, P.Y. Yu Cq, Y. Wang, Z.C. Wang Hy, Y. Bai, X. Wang, The gene polymorphisms of insulin degrading enzyme (IDE) are associated with the risk of coronary heart disease in Chinese Han population, *Int. J. Clin. Exp. Pathol.* 9 (5) (2016) 5544–5551.
- [54] M.G. Hong, C. Reynolds, M. Gatz, B. Johansson, J.C. Palmer, H.F. Gu, K. Blennow, P.G. Kehoe, U. de Faire, N.L. Pedersen, J.A. Prince, Evidence that the gene encoding insulin degrading enzyme influences human lifespan, *Hum. Mol. Genet.* 17 (15) (2008) 2370–2378.
- [55] M.A. Leissring, W. Farris, A.Y. Chang, D.M. Walsh, X. Wu, X. Sun, M.P. Frosch, D. J. Selkoe, Enhanced proteolysis of β-amyloid in APP transgenic mice prevents plaque formation, *Second. Pathol. Premat. Death Neuron* 40 (6) (2003) 1087–1093.

- [56] C.G. Jolival, R. Hurford, C.A. Lee, W. Dumaop, E. Rockenstein, E. Masliah, Type 1 diabetes exaggerates features of Alzheimer's disease in APP transgenic mice, *Exp. Neurol.* 223 (2) (2010) 422–431.
- [57] J.B. Toledo, M. Arnold, G. Kastemüller, R. Chang, R.A. Baillie, X. Han, M. Thambisetty, J.D. Tenenbaum, K. Suhre, J.W. Thompson, L.S. John-Williams, S. MahmoudiDehkordi, D.M. Rotroff, J.R. Jack, A. Motsinger-Reif, S. L. Risacher, C. Blach, J.E. Lucas, T. Massaro, G. Louie, H. Zhu, G. Dallmann, K. Klavins, T. Koal, S. Kim, K. Nho, L. Shen, R. Casanova, S. Varma, C. Legido-Quigley, M.A. Moseley, K. Zhu, M.Y.R. Henrion, S.J. van der Lee, A.C. Harms, A. Demirkan, T. Hankemeier, C.M. van Duijn, J.Q. Trojanowski, L.M. Shaw, A. J. Saykin, M.W. Weiner, P.M. Doraiswamy, R. Kaddurah-Daouk, Metabolic network failures in Alzheimer's disease: a biochemical road map, *Alzheimers Dement.* 13 (9) (2017) 965–984.
- [58] J. Bressler, B. Yu, T.H. Mosley, D.S. Knopman, R.F. Gottesman, A. Alonso, A. R. Sharrett, L.M. Wruck, E. Boerwinkle, Metabolomics and cognition in African American adults in midlife: the atherosclerosis risk in communities study, *Transl. Psychiatry* 7 (7) (2017) e1173.
- [59] Q. Xiang, J. Zhang, C.-Y. Li, Y. Wang, M.-J. Zeng, Z.-X. Cai, R.-B. Tian, W. Jia, X.-H. Li, Insulin resistance-induced hyperglycemia decreased the activation of Akt/CREB in hippocampus neurons: molecular evidence for mechanism of diabetes-induced cognitive dysfunction, *Neuropeptides* 54 (2015) 9–15.
- [60] S. Chatterjee, S.S. Ambegaokar, G.R. Jackson, A. Mudher, Insulin-mediated changes in tau hyperphosphorylation and autophagy in a drosophila model of tauopathy and neuroblastoma cells, *Front. Neurosci.* 13 (2019) 801.
- [61] M.R. Rizzo, I. Di Meo, R. Polito, M.C. Auremma, A. Gambardella, G. di Mauro, A. Capuano, G. Paolisso, Cognitive impairment and type 2 diabetes mellitus: Focus of SGLT2 inhibitors treatment, *Pharmacol. Res.* 176 (2022), 106062.
- [62] X. Wang, W. Zheng, J.-W. Xie, T. Wang, S.-L. Wang, W.-P. Teng, Z.-Y. Wang, Insulin deficiency exacerbates cerebral amyloidosis and behavioral deficits in an Alzheimer transgenic mouse model, *Mol. Neurodegenerat.* 5 (1) (2010) 46.
- [63] S.M. de la Monte, Contributions of brain insulin resistance and deficiency in amyloid-related neurodegeneration in Alzheimer's disease, *Drugs* 72 (1) (2012) 49–66.
- [64] A. Sędzikowska, L. Szablewski, Insulin and insulin resistance in Alzheimer's disease, *Int. J. Mol. Sci.* 22 (18) (2021).
- [65] J.-C. Park, S.-H. Han, I. Mook-Jung, Peripheral inflammatory biomarkers in Alzheimer's disease: a brief review, *BMB Rep.* 53 (1) (2020) 10–19.
- [66] B. Xie, M.J. Waters, H.J. Schirra, Investigating potential mechanisms of obesity by metabolomics, *J. Biomed. Biotechnol.* 2012 (2012) 10.
- [67] Z. Shan, T. Sun, H. Huang, S. Chen, L. Chen, C. Luo, W. Yang, X. Yang, P. Yao, J. Cheng, F.B. Hu, L. Liu, Association between microbiota-dependent metabolite trimethylamine-N-oxide and type 2 diabetes, *Am. J. Clin. Nutr.* 106 (3) (2017) 888–894.
- [68] C.J. McEntyre, M. Lever, S.T. Chambers, P.M. George, S. Slow, J.L. Elmslie, C. M. Florkowski, H. Lunt, J.D. Krebs, Variation of betaine, N, N-dimethylglycine, choline, glycerophosphorylcholine, taurine and trimethylamine-N-oxide in the plasma and urine of overweight people with type 2 diabetes over a two-year period, *Ann. Clin. Biochem.* 52 (3) (2014) 352–360.
- [69] A. Koh, A. Molinaro, M. Ståhlman, M.T. Khan, C. Schmidt, L. Mannerås-Holm, H. Wu, A. Carreras, H. Jeong, L.E. Olofsson, P.O. Bergh, V. Gerdes, A. Hartstra, M. de Brauw, R. Perkins, M. Nieuwdorp, G. Bergström, F. Bäckhed, Microbially produced imidazole propionate impairs insulin signaling through mTORC1, *Cell* 175 (4) (2018) 947–961.e17.
- [70] L. Barrea, G. Annunziata, G. Muscogiuri, C. Di Somma, D. Laudisio, M. Maisto, G. De Alteriis, G.C. Tenore, A. Colao, S.J.N. Savastano, Trimethylamine-N-oxide (TMAO) as novel potential biomarker of early predictors of metabolic syndrome, 10(12) (2018) 1971.
- [71] Y. Fujii, A. Khasnobish, H. Morita, Relationship between Alzheimer's Disease and the Human Microbiome, in: T. Wisniewski (Ed.), *Alzheimer's Disease*, Codon Publications Copyright: The Authors., Brisbane (AU), 2019.
- [72] X. Hu, T. Wang, F. Jin, Alzheimer's disease and gut microbiota, *Sci. China Life Sci.* 59 (10) (2016) 1006–1023.
- [73] M. Marizzoni, A. Cattaneo, P. Mirabelli, C. Festari, N. Lopizzo, V. Nicolosi, E. Mombelli, M. Mazzelli, D. Luongo, D. Naviglio, L. Coppola, M. Salvatore, G. B. Frisoni, Short-chain fatty acids and lipopolysaccharide as mediators between gut dysbiosis and amyloid pathology in Alzheimer's disease, *J. Alzheimer's Disease: JAD* 78 (2) (2020) 683–697.
- [74] A.P. Haley, D.E. Forman, A. Poppas, K.F. Hoth, J. Gunstad, A.L. Jefferson, R. H. Paul, A.S.H. Ler, L.H. Sweet, R.A. Cohen, Carotid artery intima-media thickness and cognition in cardiovascular disease, *Int. J. Cardiol.* 121 (2) (2007) 148–154.
- [75] C. Saleh, Carotid artery intima media thickness: a predictor of cognitive impairment, *Front. Biosci. (Elite Ed.)* 2 (2010) 980–990.
- [76] S. Caticala, M. Torti, G. Ricevuti, Alzheimer disease and platelets: how's that relevant, *Immun. Ageing* 9 (1) (2012) 20.
- [77] I. Canobbio, A.A. Abubaker, C. Visconte, M. Torti, G. Pula, Role of amyloid peptides in vascular dysfunction and platelet dysregulation in Alzheimer's disease, *Front. Cell. Neurosci.* 9 (2015).
- [78] Y. Kiita, T. Nakamura, M. Uematsu, W. Sugamata, J. Deyama, D. Fujioka, Y. Saito, K. Kawabata, J.-E. Obata, K. Kugiyama, Insulin resistance negatively affects long-term outcome in non-diabetic patients with coronary artery disease after therapies to reduce atherosclerotic risk factors, *J. Cardiol.* 62 (6) (2013) 348–353.
- [79] A.D. Sniderman, P.P. Toth, G. Thanassoulis, C.D. Furberg, An evidence-based analysis of the National Lipid Association recommendations concerning non-HDL-C and apoB, *J. Clin. Lipidol.* 10 (5) (2016) 1248–1258.
- [80] P.P. Toth, M. Grabner, R.S. Punekar, R.A. Quimbo, M.J. Cziraky, T.A. Jacobson, Cardiovascular risk in patients achieving low-density lipoprotein cholesterol and particle targets, *Atherosclerosis* 235 (2) (2014) 585–591.
- [81] G.M. Reaven, Insulin resistance and compensatory hyperinsulinemia: Role in hypertension, dyslipidemia, and coronary heart disease, *Am. Heart J.* 121 (4, Part 2) (1991) 1283–1288.
- [82] J.T. Salonen, T.A. Lakka, H.-M. Lakka, V.-P. Valkonen, S.A. Everson, G.A.J.D. Kaplan, Hyperinsulinemia is associated with the incidence of hypertension and dyslipidemia in middle-aged men, 47(2) (1998) 270–275.
- [83] G. Anfossi, I. Russo, M. Trovati, Platelet dysfunction in central obesity, *Nutr Metab Cardiovasc Dis* 19 (6) (2009) 440–449.
- [84] F. Santilli, N. Vazzana, R. Liani, M.T. Guagnano, G. Davi, Platelet activation in obesity and metabolic syndrome, *Obesity Rev.: Off. J. Int. Assoc. Study Obesity* 13 (1) (2012) 27–42.
- [85] M.P. Stern, S.M. Haffner, Body fat distribution and hyperinsulinemia as risk factors for diabetes and cardiovascular disease, 6(2) (1986) 123–130.
- [86] S. Chandel, A. Sathis, M. Dhar, H. Giri, A.A. Nathan, S.K.R. Samawar, A. Gupta, J. Gopal, R. Harish, V. Mohan, M. Dixit, Hyperinsulinemia promotes endothelial inflammation via increased expression and release of Angiopoietin-2, *Atherosclerosis* 307 (2020) 1–10.
- [87] E.M. Yubero-Serrano, J. Delgado-Lista, J.F. Alcalá-Díaz, A. García-Ríos, A. I. Perez-Caballero, R. Blanco-Rojo, F. Gomez-Delgado, C. Marin, F.J. Tinahones, J. Caballero, J.M. Ordovas, B. van Ommen, F. Perez-Jimenez, P. Perez-Martinez, J. Lopez-Miranda, A dysregulation of glucose metabolism control is associated with carotid atherosclerosis in patients with coronary heart disease (CORDIOPREV-DIAB study), *Atherosclerosis* 253 (2016) 178–185.
- [88] G.C. ECEMIŞ, H. Kahraman, M.S. Nural, H.S. Aslan, A. ATMACA, The relationship between insulin resistance and carotid artery intima-media thickness in obese and morbidly obese women, *Turk. J. Med. Sci.* 42 (6) (2012) 1121–1128.
- [89] S. Agewall, B. Fagerberg, S. Attvall, I. Wendelhag, V. Urbanavicius, J. Wikstrand, Carotid artery wall intima-media thickness is associated with insulin-mediated glucose disposal in men at high and low coronary risk, *Stroke* 26 (6) (1995) 956–960.
- [90] N. Sikhayeva, A. Iskakova, N. Saigi-Morgui, E. Zholydybaeva, C.-B. Eap, E. Ramancubet, Association between 28 single nucleotide polymorphisms and type 2 diabetes mellitus in the Kazakh population: a case-control study, *BMC Med. Genet.* 18 (1) (2017) 76.
- [91] Y.F. Chuang, T. Tanaka, L.L. Beason-Held, Y. An, A. Terracciano, A.R. Sutin, M. Kraut, A.B. Singleton, S.M. Resnick, M. Thambisetty, FTO genotype and aging: pleiotropic longitudinal effects on adiposity, brain function, impulsivity and diet, *Mol. Psychiatry* 20 (1) (2015) 133–139.
- [92] H. Wang, S. Dong, H. Xu, J. Qian, J. Yang, Genetic variants in FTO associated with metabolic syndrome: a meta- and gene-based analysis, *Mol. Biol. Rep.* 39 (5) (2012) 5691–5698.
- [93] Y. Liu, Z. Liu, Y. Song, D. Zhou, D. Zhang, T. Zhao, Z. Chen, L. Yu, Y. Yang, G. Feng, J. Li, J. Zhang, S. Liu, Z. Zhang, L. He, H. Xu, Meta-analysis added power to identify variants in FTO associated with type 2 diabetes and obesity in the Asian population, *Obesity* 18 (8) (2010) 1619–1624.
- [94] L.A. Younus, A.H.A. Algenabi, M.S. Abdul-Zhara, M.K. Hussein, FTO gene polymorphisms (rs9939609 and rs17817449) as predictors of Type 2 Diabetes Mellitus in obese Iraqi population, *Gene* 627 (2017) 79–84.
- [95] L. Bertram, H. Heekeren, Obesity and the brain: a possible genetic link, *Alzheimers Res. Ther.* 2 (5) (2010) 27.
- [96] C. Benedict, T. Axelsson, S. Söderberg, A. Larsson, E. Ingelsson, L. Lind, H.B. Schiöth, Fat Mass and Obesity-Associated Gene (FTO) Is Linked to Higher Plasma Levels of the Hunger Hormone Ghrelin and Lower Serum Levels of the Satiety Hormone Leptin in Older Adults, 63(11) (2014) 3955–3959.
- [97] S. Kim, Y. Nam, S.J. Shin, Y.H. Park, S.G. Jeon, J.-i. Kim, M.-J. Kim, M. Moon, The Potential Roles of Ghrelin in Metabolic Syndrome and Secondary Symptoms of Alzheimer's Disease, 14(989) (2020).
- [98] E.G. Beale, Insulin signaling and insulin resistance, *J. Invest. Med.* 61 (1) (2013) 11–14.
- [99] M.D. Gahete, J. Córdoba-Chacón, R.D. Kineman, R.M. Luque, J.P. Castaño, Role of ghrelin system in neuroprotection and cognitive functions: implications in Alzheimer's disease, *Peptides* 32 (11) (2011) 2225–2228.
- [100] X. Cao, M. Zhu, Y. He, W. Chu, Y. Du, H. Du, Increased serum acylated ghrelin levels in patients with mild cognitive impairment, *J. Alzheimers Dis.* 61 (2018) 545–552.
- [101] M.B. Spitznagel, A. Benitez, J. Updegraff, V. Potter, T. Alexander, E. Glickman, J. Gunstad, Serum ghrelin is inversely associated with cognitive function in a sample of non-demented elderly, 64(6) (2010) 608–611.
- [102] L. Shi, X. Du, H. Jiang, J. Xie, Ghrelin and neurodegenerative disorders—a review, *Mol. Neurobiol.* 54 (2) (2017) 1144–1155.
- [103] V. Caputo, A. Termine, C. Straffella, E. Giardina, R. Cascella, Shared epigenomic background connecting neurodegenerative diseases and type 2 diabetes, *World J. Diabetes* 11 (5) (2020) 155–164.
- [104] L. Miao, R.-X. Yin, S.-L. Pan, S. Yang, D.-Z. Yang, W.-X. Lin, BCL3-PVRL2-TOMM40 SNPs, gene-gene and gene-environment interactions on dyslipidemia, *Sci. Rep.* 8 (1) (2018), 6189 6189.
- [105] J. Ronald, R. Rajagopalan, J.E. Ranchalis, J.K. Marshall, T.S. Hatsukami, P. J. Heagerty, G.P. Jarvik, Analysis of recently identified dyslipidemia alleles reveals two loci that contribute to risk for carotid artery disease, *Lipids Health Dis.* 8 (2009), 52 52.
- [106] Y. Yamase, H. Horibe, C. Ueyama, T. Fujimaki, M. Oguri, K. Kato, M. Arai, S. Watanabe, Y. Yamada, Association of TOMM40 and SLC22A4 polymorphisms with ischemic stroke, *Biomed Rep* 3 (4) (2015) 491–498.

- [107] H. Schunkert, I.R. König, S. Kathiresan, M.P. Reilly, T.L. Assimes, H. Holm, M. Preuss, A.F. Stewart, M. Barbalic, C. Gieger, D. Absher, Z. Aherrahrou, H. Allayee, D. Altshuler, S.S. Anand, K. Andersen, J.L. Anderson, D. Ardissono, S. G. Ball, A.J. Balmforth, T.A. Barnes, D.M. Becker, L.C. Becker, K. Berger, J.C. Bis, S.M. Boekholdt, E. Boerwinkle, P.S. Braund, M.J. Brown, M.S. Burnett, I. Buyschaert, J.F. Carlquist, L. Chen, S. Cichon, V. Codd, R.W. Davies, G. Dedoussis, A. Dehghan, S. Demissie, J.M. Devaney, P. Diemert, R. Do, A. Doering, S. Eifert, N.E. Mokhtari, S.G. Ellis, R. Elosua, J.C. Engert, S.E. Epstein, U. de Faire, M. Fischer, A.R. Folsom, J. Freyer, B. Gigante, D. Girelli, S. Gretarsdottir, V. Gudnason, J.R. Gulcher, E. Halperin, N. Hammond, S. L. Hazen, A. Hofman, B.D. Horne, T. Illig, C. Iribarren, G.T. Jones, J.W. Jukema, M.A. Kaiser, L.M. Kaplan, J.J. Kastelein, K.T. Khaw, J.W. Knowles, G. Kolovou, A. Kong, R. Laaksonen, D. Lambrechts, K. Leander, G. Lettre, M. Li, W. Lieb, C. Loley, A.J. Lotery, P.M. Mannucci, S. Maouche, N. Martinelli, P.P. McKeown, C. Meisinger, T. Meitinger, O. Melander, P.A. Merlini, V. Mooser, T. Morgan, T. W. Muhleisen, J.B. Muhlestein, T. Münzel, K. Musunuru, J. Nahrstaedt, C. P. Nelson, M.M. Nöthen, O. Olivieri, R.S. Patel, C.C. Patterson, A. Peters, F. Peyvandi, L. Qu, A.A. Quyyumi, D.J. Rader, L.S. Rallidis, C. Rice, F. R. Stefansson, D. Rubin, V. Salomaa, M.L. Sampietro, M.S. Sandhu, E. Schadt, A. Schäfer, A. Schillert, S. Schreiber, J. Schrezenmeier, S.M. Schwartz, D. S. Siscovick, M. Sivananthan, S. Sivapalaratnam, A. Smith, T.B. Smith, J.D. Sneed, N. Soranzo, J.A. Spertus, K. Stark, K. Stirrups, M. Stoll, W.H. Tang, S. Tennstedt, G. Thorgerisson, G. Thorleifsson, M. Tomaszewski, A.G. Uitterlinden, A.M. van Rij, B.F. Voight, N.J. Wareham, G.A. Wells, H.E. Wichmann, P.S. Wild, C. Willenborg, J.C. Witteman, B.J. Wright, S. Ye, T. Zeller, A. Ziegler, F. Cambien, A.H. Goodall, L.A. Cupples, T. Quertermous, W. März, C. Hengstenberg, S. Blankenberg, W.H. Ouwehand, A.S. Hall, P. Deloukas, J.R. Thompson, K. Stefansson, R. Roberts, U. Thorsteinsdottir, C.J. O'Donnell, R. McPherson, J. Erdmann, N.J. Samani, Large-scale association analysis identifies 13 new susceptibility loci for coronary artery disease, *Nat. Genet.* 43 (4) (2011) 333–338.
- [108] T.R. Webb, J. Erdmann, K.E. Stirrups, N.O. Stitzel, N.G. Masca, H. Jansen, S. Kanoni, C.P. Nelson, P.G. Ferrario, I.R. König, J.D. Eicher, A.D. Johnson, S. E. Hamby, C. Betsholtz, A. Ruusalepp, O. Franzén, E.E. Schadt, J.L. Björkegren, P. E. Weeke, P.L. Auer, U.M. Schick, Y. Lu, H. Zhang, M.P. Dube, A. Goel, M. Farrall, G.M. Peloso, H.H. Won, R. Do, E. van Iperen, J. Kruppa, A. Mahajan, R.A. Scott, C. Willenborg, P.S. Braund, J.C. van Capelleveen, A.S. Doney, L.A. Donnelly, R. Asselta, P.A. Merlini, S. Duga, N. Marziliano, J.C. Denny, C. Shaffer, N.E. El-Mokhtari, A. Franke, S. Heilmann, C. Hengstenberg, P. Hoffmann, O.L. Holmen, K. Hveem, J.H. Jansson, K.H. Jöckel, T. Kessler, J. Kriebel, K.L. Laugwitz, E. Marouli, N. Martinelli, M.I. McCarthy, N.R. Van Zuydam, C. Meisinger, T. Esko, E. Mihailov, S.A. Escher, M. Alver, S. Moebus, A.D. Morris, J. Virtamo, M. Nikpay, O. Olivieri, S. Prokost, A. AlQarawi, N.R. Robertson, K.O. Akinsanya, D.F. Reilly, T.F. Vogt, W. Yin, F.W. Asselbergs, C. Kooperberg, R.D. Jackson, E. Stahl, M. Müller-Nurasyid, K. Strauch, T.V. Varga, M. Waldenberger, L. Zeng, R. Chowdhury, V. Salomaa, I. Ford, J.W. Jukema, P. Amouyel, J. Kontto, B. G. Nordestgaard, J. Ferrières, D. Saleheen, N. Sattar, P. Surendran, A. Wagner, R. Young, J.M. Howson, A.S. Butterworth, J. Danesh, D. Ardissono, E.P. Bottinger, R. Erbel, P.W. Franks, D. Girelli, A.S. Hall, G.K. Hovingh, A. Kastrati, W. Lieb, T. Meitinger, W.E. Kraus, S.H. Shah, R. McPherson, M. Orho-Melander, O. Melander, A. Metspalu, C.N. Palmer, A. Peters, D.J. Rader, M.P. Reilly, R. J. Loos, A.P. Reiner, D.M. Roden, J.C. Tardif, J.R. Thompson, N.J. Wareham, H. Watkins, C.J. Willer, N.J. Samani, H. Schunkert, P. Deloukas, S. Kathiresan, Systematic evaluation of pleiotropy identifies 6 further loci associated with coronary artery disease, *J. Am. Coll. Cardiol.* 69 (7) (2017) 823–836.
- [109] S. Karamohamed, S. Demissie, J. Volcjak, C. Liu, N. Heard-Costa, J. Liu, C. M. Shoemaker, C.I. Panhuysen, J.B. Meigs, P. Wilson, L.D. Atwood, L.A. Cupples, A. Herbert, Polymorphisms in the insulin-degrading enzyme gene are associated with type 2 diabetes in men from the NHLBI framingham heart study, *Diabetes* 52 (6) (2003) 1562–1567.
- [110] P.-J. Cui, L. Cao, Y. Wang, Y.-L. Deng, W. Xu, G. Wang, Y. Zhang, L. Zheng, Q.-Z. Fei, T. Zhang, S.-D. Chen, The association between two single nucleotide polymorphisms within the insulin-degrading enzyme gene and Alzheimer's disease in a Chinese Han population, *J. Clin. Neurosci.* 19 (5) (2012) 745–749.
- [111] N. Rudovich, O. Pivovarova, E. Fisher, A. Fischer-Rosinsky, J. Spranger, M. Möhlig, M.B. Schulze, H. Boeing, A.F. Pfeiffer, Polymorphisms within insulin-degrading enzyme (IDE) gene determine insulin metabolism and risk of type 2 diabetes, *J. Mol. Med. (Berl)* 87 (11) (2009) 1145–1151.
- [112] Y. Cheng, Y. Li, X. Liang, P. Wang, W. Fa, C. Liu, Y. Wang, K. Liu, N. Wang, Y. Du, Genetic effects of NDUFAF6 rs6982393 and APOE on Alzheimer's disease in chinese rural elderly: across-sectional population-based study, *Clin. Interv. Aging* 17 (2022) 185–194.
- [113] Y. Sun, R. Wei, D. Yan, F. Xu, X. Zhang, B. Zhang, D. Yimiti, H. Li, H. Sun, C. Hu, L. Luo, H. Yao, Association between APOE polymorphism and metabolic syndrome in Uyghur ethnic men, *BMJ Open* 6 (1) (2016) e010049.
- [114] R. Cai, J. Han, J. Sun, R. Huang, S. Tian, Y. Shen, X. Dong, W. Xia, S. Wang, Plasma clusterin and the CLU gene rs11136000 variant are associated with mild cognitive impairment in type 2 diabetic patients, *Front. Aging Neurosci.* 8 (2016). S. Ciftci-Yilmaz, M. Öznur, Z. Aytyrk, S. Dede, S. Cigdem, E. Eroglu, F. Onal, B. Ogretici, A. Toygar, R. Yigitoglu, S. Yuksel, Association of clusterin (CLU) gene polymorphism, Rs11136000, with Alzheimer's disease and diabetes in the Turkish population, *Clin. Invest. Med.* 38 (2015). E200 E6.
- [116] T.M. Lancaster, L.M. Brindley, K.E. Tansey, R.C. Sims, K. Mantripragada, M. J. Owen, J. Williams, D.E.J. Linden, Alzheimer's disease risk variant in CLU is associated with neural inefficiency in healthy individuals, *Alzheimers Dement.* 11 (10) (2015) 1144–1152.
- [117] L. Tan, H.-F. Wang, M.-S. Tan, C.-C. Tan, X.-C. Zhu, D. Miao, W.-J. Yu, T. Jiang, L. Tan, J.-T. Yu, M.W. Weiner, P. Aisen, R. Petersen, C.R. Jack, W. Jagust, J. Q. Trojanowski, A.W. Toga, L. Beckett, R.C. Green, A.J. Saykin, J. Morris, L. M. Shaw, J. Kaye, J. Quinn, L. Silbert, B. Lind, R. Carter, S. Dolen, L.S. Schneider, S. Pawluczyk, M. Beccera, L. Teodoro, B.M. Spann, J. Brewer, H. Vanderswag, A. Fleisher, J.L. Heidebrink, J.L. Lord, S.S. Mason, C.S. Albers, D. Knopman, K. Johnson, R.S. Doody, J. Villanueva-Meyer, M. Chowdhury, S. Rountree, M. Dang, Y. Stern, L.S. Honig, K.L. Bell, B. Ances, J.C. Morris, M. Carroll, M. L. Creech, E. Franklin, M.A. Mintun, S. Schneider, A. Oliver, D. Marson, R. Griffith, D. Clark, D. Geldmacher, J. Brockington, E. Roberson, M.N. Love, H. Grossman, E. Mitsis, R.C. Shah, L. deToledo-Morrell, R. Duara, D. Varon, M. T. Greig, P. Roberts, M. Albert, C. Onyike, D. D'Agostino, S. Kielbaso, J.E. Galvin, B. Carbone, C.A. Michel, D.M. Pogorelec, H. Rusinek, M.J. de Leon, L. Glodzik, S. De Santi, P.M. Doraiswamy, J.R. Petrella, S. Borges-Neto, T.Z. Wong, E. Coleman, C.D. Smith, G. Jicha, P. Hardy, P. Sinha, E. Oates, G. Conrad, A. P. Porsteinsson, B.S. Goldstein, K. Martin, K.M. Makino, M.S. Ismail, C. Brand, R. A. Mulnard, G. Thai, C. Mc-Adams-Ortiz, R. Womack, D. Mathews, M. Quiceno, A. I. Levey, J.J. Lah, J.S. Cellar, J.M. Burns, R.H. Swerdlow, W.M. Brooks, L. Apostolova, K. Tingus, E. Woo, D.H.S. Silverman, P.H. Lu, G. Bartzokis, N. R. Graff-Radford, F. Parfitt, T. Kendall, H. Johnson, M.R. Farlow, A.M. Hake, B. R. Matthews, J.R. Brosch, S. Herring, C. Hunt, C.H. van Dyck, R.E. Carson, M. G. MacAvoy, P. Varma, H. Chertkow, H. Bergman, C. Hoese, S. Black, B. Stefanovic, C. Caldwell, G.-Y.-R. Hsiung, H. Feldman, B. Mudge, M. Assaly, E. Finger, S. Pasternack, I. Rachisky, D. Trost, A. Kertesz, C. Bernick, D. Munic, M.-M. Mesulam, K. Lipowski, S. Weintraub, B. Bonakdarpour, D. Kerwin, C.-K. Wu, N. Johnson, C. Sadowsky, T. Villena, R.S. Turner, K. Johnson, B. Reynolds, R.A. Sperling, K.A. Johnson, G. Marshall, J. Yesavage, J.L. Taylor, B. Lane, A. Rosen, J. Tinklenberg, M.N. Sabbagh, C.M. Belden, S.A. Jacobson, S.A. Sirrel, N. Kowall, R. Killiany, A.E. Budson, A. Norbash, P.L. Johnson, T.O. Obisesan, S. Wolday, J. Allard, A. Lerner, P. Ogrocki, C. Tatsuoka, P. Fatica, E. Fletcher, P. Maillard, J. Olichney, C. DeCarli, O. Carmichael, K. Kittur, M. Borrie, T.Y. Lee, R. Bartha, S. Johnson, S. Asthana, C.M. Carlsson, S.G. Potkin, A. Preda, D. Nguyen, P. Tariot, A. Burke, N. Trncic, A. Fleisher, S. Reeder, V. Bates, H. Capote, M. Rainka, D.W. Scharre, M. Kataki, A. Adeli, E.A. Zimmerman, M. Celmins, A.D. Brown, G.D. Pearson, K. Blank, K. Anderson, L.A. Flashman, M. Seltzer, M.L. Hynes, R.B. Santulli, K.M. Sink, L. Gordineer, J.D. Williamson, P. Garg, F. Watkins, B.R. Ott, H. Querfurth, G. Tremont, S. Salloway, P. Malloy, S. Correia, H.J. Rosen, B.L. Miller, D. Perry, J. Mintzer, K. Spicer, D. Bachman, N. Pomara, R. Hernando, A. Sarrael, N. Relkin, G. Chaing, M. Lin, L. Ravdin, A. Smith, B.A. Raj, K. Fargher, I. Alzheimer's Disease Neuroimaging, Effect of CLU genetic variants on cerebrospinal fluid and neuroimaging markers in healthy, mild cognitive impairment and Alzheimer's disease cohorts, *Sci. Rep.* 6 (1) (2016) 26027.
- [118] J. Ha, M.K. Moon, H. Kim, M. Park, S.Y. Cho, J. Lee, J.Y. Lee, E. Kim, Plasma clusterin as a potential link between diabetes and alzheimer disease, *J. Clin. Endocrinol. Metab.* 105 (9) (2020) 3058–3068.
- [119] N. Sato, The emerging role of the apolipoproteins APOE and APOJ in the interaction between diabetes and Alzheimer disease, *J. Clin. Endocrinol. Metab.* 105 (11) (2020) e4181 e2.
- [120] C. Clark, L. Dayon, M. Masoodi, G.L. Bowman, J. Popp, An integrative multi-omics approach reveals new central nervous system pathway alterations in Alzheimer's disease, *Alzheimers Res. Ther.* 13 (1) (2021), 71 71.
- [121] L.T. Nordestgaard, A. Tybjaerg-Hansen, K.L. Rasmussen, B.G. Nordestgaard, R. Frikke-Schmidt, Genetic variation in clusterin and risk of dementia and ischemic vascular disease in the general population: cohort studies and meta-analyses of 362,338 individuals, *BMC Med.* 16 (1) (2018) 39.
- [122] J. Wittwer, D. Bradley, Clusterin and its role in insulin resistance and the cardiometabolic syndrome, *Front. Immunol.* 12 (2021), 612496 612496.
- [123] J. Tan, W. Guo, S. Yang, D. Han, H. Li, The multiple roles and therapeutic potential of clusterin in non-small-cell lung cancer: a narrative review, *Transl Lung Cancer Res* 10 (6) (2021) 2683–2697.
- [124] J.A. Seo, M.-C. Kang, W.-M. Yang, W.M. Hwang, S.S. Kim, S.H. Hong, J.-I. Heo, A. Vijayakumar, L. Pereira de Moura, A. Uner, H. Huang, S.H. Lee, I.S. Lima, K. S. Park, M.S. Kim, Y. Dagon, T.E. Willnow, V. Aroda, T.P. Ciaraldi, R.R. Henry, Y.-B. Kim, Apolipoprotein J is a hepatokine regulating muscle glucose metabolism and insulin sensitivity, *Nat. Commun.* 11 (1) (2020), 2024 2024.
- [125] Z. Han, J. Qu, J. Zhao, X. Zou, Analyzing 74,248 samples confirms the association between CLU rs11136000 polymorphism and Alzheimer's disease in caucasian but not chinese population, *Sci. Rep.* 8 (1) (2018) 11062.
- [126] L. Keller, W. Xu, H.X. Wang, B. Winblad, L. Fratiglioni, C. Graff, The obesity related gene, FTO, interacts with APOE, and is associated with Alzheimer's disease risk: a prospective cohort study, *J. Alzheimer's Disease: JAD* 23 (3) (2011) 461–469.
- [127] A.S. Ozuyunuk, A.F. Erkan, N. Dogan, B. Ekici, N. Erginel-Unaltuna, O. Kurmus, N. Coban, Examining the effects of the CLU and APOE polymorphisms' combination on coronary artery disease complexed with type 2 diabetes mellitus, *J. Diabetes Complications* 36 (1) (2022), 108078.
- [128] N.M. Al-Daghri, O.S. Al-Attas, S. Krishnaswamy, A.K. Mohammed, A.M. Alenad, G.P. Chrousos, M.S. Alokail, Association of Type 2 Diabetes Mellitus related SNP genotypes with altered serum adipokine levels and metabolic syndrome phenotypes, *Int. J. Clin. Exp. Med.* 8 (3) (2015) 4464–4471.
- [129] A.M.A. Mostafa, Clopidogrel personalization: pharmacogenetics and pharmacometabonomics: a review of the literature, LAP LAMBERT Academic Publishing (2016).
- [130] R. Nagpal, B.J. Neth, S. Wang, S. Craft, H. Yadav, Modified Mediterranean-ketogenic diet modulates gut microbiome and short-chain fatty acids in

- association with Alzheimer's disease markers in subjects with mild cognitive impairment, *EBioMedicine* 47 (2019) 529–542.
- [131] Y. Zheng, X. Zhang, J. Chen, Q. Zhou, H. Gao, Metabonomics studies of urine from APP/PS1 mice with early-stage Alzheimer's disease, *Zhejiang Da Xue Xue Bao Yi Xue Ban* 47 (6) (2018) 636–642.
- [132] A.M. Amin, L. Sheau Chin, C.-H. Teh, H. Mostafa, D.A. Mohamed Noor, M.A. Sk Abdul Kader, Y. Kah Hay, B. Ibrahim, 1H NMR based pharmacometabolomics analysis of urine identifies metabolic phenotype of clopidogrel high on treatment platelets reactivity in coronary artery disease patients, *Journal of Pharmaceutical and Biomedical Analysis* 146 (2017) 135–146.
- [133] X. Meng, J. Ma, A.N. Kang, S.Y. Kang, H.W. Jung, Y.-K. Park, A novel approach based on metabolomics coupled with intestinal flora analysis and network pharmacology to explain the mechanisms of action of bekgoginsam decoction in the improvement of symptoms of streptozotocin-induced diabetic nephropathy in mice, *Front. Pharmacol.* 11 (2020), 633 633.
- [134] Y. Yang, D. Wang, Y. Zhao, Y. Wang, Y. Bi, T. Bi, Metabolomics study of cerebrospinal fluid from diabetic rats with cognitive impairment simultaneously treated with Panax quinquefolius and Acorus gramineus, *Biomed. Chromatogr.* 35 (4) (2021) e5041.
- [135] D. Stamate, M. Kim, P. Proitsis, S. Westwood, A. Baird, A. Nevado-Holgado, A. Hye, I. Bos, S. Vos, R. Vandenbergh, C.E. Teunissen, M.T. Kate, P. Scheltens, S. Gabel, K. Meersmans, O. Blin, J. Richardson, E.D. Roeck, S. Engelborghs, K. Sleegers, R. Bordet, L. Rami, P. Kettunen, M. Tsolaki, F. Verhey, D. Alcolea, A. Lléo, G. Peyratout, M. Tainta, P. Johannsen, Y. Freund-Levi, L. Frölich, V. Dobricic, G.B. Frisoni, J.L. Molinuevo, A. Wallin, J. Popp, P. Martinez-Lage, L. Bertram, K. Blennow, H. Zetterberg, J. Streffer, P.J. Visser, S. Lovestone, C. Legido-Quigley, A metabolite-based machine learning approach to diagnose Alzheimer's-type dementia in blood: Results from the European Medical Information Framework for Alzheimer's Disease biomarker discovery cohort, *medRxiv* (2019) 19007146.
- [136] Z.P. Hu, E.R. Browne, T. Liu, T.E. Angel, P.C. Ho, E.C. Chan, Metabonomic profiling of TASTPM transgenic Alzheimer's disease mouse model, *J. Proteome Res.* 11 (12) (2012) 5903–5913.
- [137] Z. Lin, C.M. Vicente Goncalves, L. Dai, H.M. Lu, J.H. Huang, H. Ji, D.S. Wang, L. Z. Yi, Y.Z. Liang, Exploring metabolic syndrome serum profiling based on gas chromatography mass spectrometry and random forest models, *Anal. Chim. Acta* 827 (2014) 22–27.
- [138] A. Mardinoglu, A. Stančáková, L.A. Lotta, J. Kuusisto, J. Boren, M. Blüher, N. J. Wareham, E. Ferrannini, P.H. Groop, M. Laakso, C. Langenberg, U. Smith, Plasma mannose levels are associated with incident Type 2 diabetes and cardiovascular disease, *Cell Metab.* 26 (2) (2017) 281–283.
- [139] H.J. Atherton, N.J. Bailey, W. Zhang, J. Taylor, H. Major, J. Shockor, K. Clarke, J.L. Griffin, A combined 1H-NMR spectroscopy- and mass spectrometry-based metabolomic study of the PPAR- α null mutant mouse defines profound systemic changes in metabolism linked to the metabolic syndrome, *Diabetes* 55 (2) (2006) 178–186.
- [140] R. Liu, J. Hong, X. Xu, Q. Peng, D. Zhang, Y. Gu, J. Shi, S. Zhao, W. Liu, X. Wang, H. Xia, Z. Liu, B. Cui, P. Liang, L. Xi, J. Jin, X. Ying, X. Wang, X. Zhao, W. Li, H. Jia, Z. Lan, F. Li, R. Wang, Y. Sun, M. Yang, Y. Shen, Z. Jie, J. Li, X. Chen, H. Zhong, H. Xie, Y. Zhang, W. Gu, X. Deng, B. Shen, X. Xu, H. Yang, G. Xu, Y. Bi, S. Lai, J. Wang, L. Qi, L. Madsen, J. Wang, G. Ning, K. Kristiansen, W. Wang, Gut microbiome and serum metabolome alterations in obesity and after weight-loss intervention, *Nat. Med.* 23 (7) (2017) 859–868.
- [141] E.T. Cirulli, L. Guo, C. Leon Swisher, N. Shah, L. Huang, L.A. Napier, E. F. Kirkness, T.D. Spector, C.T. Caskey, B. Thorens, J.C. Venter, A. Telenti, Profound perturbation of the metabolome in obesity is associated with health risk, *Cell Metab.* 29 (2) (2019) 488–500.e2.
- [142] N.A. Younsri, D.O. Mook-Kanamori, M.-M.-E.-D. Selim, A.H. Takiddin, H. Al-Homsí, K.A. Al-Mahmoud, E.D. Karoly, J. Krumsiek, K.T. Do, U. Neumaier, A systems view of type 2 diabetes-associated metabolic perturbations in saliva, blood and urine at different timescales of glycaemic control, *Diabetologia* 58 (8) (2015) 1855–1867.
- [143] X. Han, S. Rozen, S.H. Boyle, C. Hellegers, H. Cheng, J.R. Burke, K.A. Welsh-Bohmer, P.M. Doraiswamy, R. Kaddurah-Daouk, Metabolomics in early Alzheimer's disease: identification of altered plasma sphingolipidome using shotgun lipidomics, *PLoS One* 6 (7) (2011) e21643–e.
- [144] M. Yi, C. Zhang, Z. Zhang, P. Yi, P. Xu, J. Huang, W. Peng, Integrated metabolomic and lipidomic analysis reveals the neuroprotective mechanisms of bushen tiansui formula in an A β -1-42-induced rat model of Alzheimer's disease, *Oxid. Med. Cell. Longev.* 2020 (2020) 5243453.
- [145] M.G. Schooneman, F.M. Vaz, S.M. Houten, M.R.J.D. Soeters, Acylcarnitines: reflecting or inflicting insulin resistance?, *Diabetes* 52 (1) (2013) 1–8.
- [146] N. Wu, W. Wang, M. Yi, S. Cheng, D. Wang, Study of the metabolomics characteristics of patients with metabolic syndrome based on liquid chromatography quadrupole time-of-flight mass spectrometry, *Ann. Endocrinol.* 79 (1) (2018) 37–44.
- [147] J. Boon, A.J. Hoy, R. Stark, R.D. Brown, R.C. Meex, D.C. Henstridge, S. Schenk, P. J. Meikle, J.F. Horowitz, B.A. Kingwell, C.R. Bruce, M.J. Watt, Ceramides Contained in LDL Are Elevated in Type 2 Diabetes and Promote Inflammation and Skeletal Muscle Insulin Resistance, *Diabetes* 62(2) (2013) 401–410.
- [148] M. Maceyka, S. Spiegel, Sphingolipid metabolites in inflammatory disease, *Nature* 510 (7503) (2014) 58–67.
- [149] J. Yu, S.A. Novgorodov, D. Chudakova, H. Zhu, A. Bielawska, J. Bielawski, L.M. Obeid, M.S. Kindy, T.I.J.o.B.C. Gudz, JNK3 signaling pathway activates ceramide synthase leading to mitochondrial dysfunction, *Diabetes* 56(25) (2007) 25940–25949.
- [150] T.P.M. Scheithauer, E. Rampanelli, M. Nieuwdorp, B.A. Vallance, C.B. Verchere, D.H. van Raalte, H. Herrema, Gut Microbiota as a trigger for metabolic inflammation in obesity and type 2 diabetes, *Front. Immunol.* 11 (2020).
- [151] R.C. Schugart, D.M. Shih, M. Warrior, R.N. Helseley, A. Burrows, A.L. Brown, A.D. Gromovsky, M. Heine, A.J.C.R. Chatterjee, The TMAO-producing enzyme flavin-containing monooxygenase 3 regulates obesity and the being of white adipose tissue, *PLoS One* 12(12) (2017) 2451–2461.
- [152] R.M. Salek, M.L. Maguire, E. Bentley, D.V. Rubtsov, T. Hough, M. Cheeseman, D. Nunez, B.C. Sweetman, J.N. Haselden, R.D. Cox, S.C. Connor, J.L. Griffin, A metabolomic comparison of urinary changes in type 2 diabetes in mouse, rat, and human, *Physiol. Genomics* 29 (2) (2007) 99–108.
- [153] W. Zhu, J.C. Gregory, E. Org, J.A. Buffa, N. Gupta, Z. Wang, L. Li, X. Fu, Y. Wu, M. Mehrabian, Gut microbial metabolite TMAO enhances platelet hyperreactivity and thrombosis risk, *Cell* 165 (1) (2016) 111–124.
- [154] Z. Wang, E. Klipfell, B.J. Bennett, R. Koeth, B.S. Levinson, B. DuGar, A.E. Feldstein, E.B. Britt, X. Fu, Y.-M. Chung, Y. Wu, P. Schauer, J.D. Smith, H. Allayee, W.H. W. Tang, J.A. DiDonato, A.J. Lusis, S.L. Hazen, Gut flora metabolism of phosphatidylcholine promotes cardiovascular disease, *Nature* 472 (7341) (2011) 57–63.
- [155] W.H. Tang, Z. Wang, X.S. Li, Y. Fan, D.S. Li, Y. Wu, S.L. Hazen, Increased trimethylamine N-oxide portends high mortality risk independent of glycemic control in patients with type 2 diabetes mellitus, *Clin. Chem.* 63 (1) (2017) 297–306.
- [156] P. Arrona Cardoza, M.B. Spillane, E. Morales Marroquin, Alzheimer's disease and gut microbiota: does trimethylamine N-oxide (TMAO) play a role? *Nutr. Rev.* 80 (2) (2021) 271–281.
- [157] N.M. Vogt, K.A. Romano, B.F. Darst, C.D. Engelman, S.C. Johnson, C.M. Carlsson, S. Asthana, K. Blennow, H. Zetterberg, B.B. Bendlin, F.E. Rey, The gut microbiota-derived metabolite trimethylamine N-oxide is elevated in Alzheimer's disease, *Alzheimers Res. Ther.* 10 (1) (2018) 124.
- [158] Z. Wang, A.B. Roberts, J.A. Buffa, B.S. Levinson, W. Zhu, E. Org, X. Gu, Y. Huang, M. Zamanian-Daryoush, M.K. Cully, Non-lethal inhibition of gut microbial trimethylamine production for the treatment of atherosclerosis, *Cell* 163 (7) (2015) 1585–1595.
- [159] M.-L. Chen, L. Yi, Y. Zhang, X. Zhou, L. Ran, J. Yang, J.-D. Zhu, Q.-Y. Zhang, M.-T. Mi, Resveratrol attenuates trimethylamine-N-oxide (TMAO)-induced atherosclerosis by regulating TMAO synthesis and bile acid metabolism via remodeling of the gut microbiota, *MBio* 7 (2) (2016) e02210–e2215.
- [160] M.S. Palmnäs, K.A. Kopciuk, R.A. Shaykhdudinov, P.J. Robson, D. Mignault, R. Rabasa-Lhoret, H.J. Vogel, I.J.S.R. Cszimadi, Serum metabolomics of activity energy expenditure and its relation to metabolic syndrome and obesity, *Diabetes* 57(1) (2018) 1–12.
- [161] J. Shearer, E. Duggan, A. Weljie, D.S. Hittel, D.H. Wasserman, H.J. Vogel, Metabolomic profiling of dietary-induced insulin resistance in the high fat–fed C57BL/6J mouse, *Diabetes Obes. Metab.* 10 (10) (2008) 950–958.
- [162] S.C. Connor, M.K. Hansen, A. Corner, R.F. Smith, T.E. Ryan, Integration of metabolomics and transcriptomics data to aid biomarker discovery in type 2 diabetes, *Mol. Biosyst.* 6 (5) (2010) 909–921.
- [163] L. Wu, Y. Han, Z. Zheng, G. Peng, P. Liu, S. Yue, S. Zhu, J. Chen, H. Lv, L. Shao, Y. Sheng, Y. Wang, L. Li, L. Li, B. Wang, Altered gut microbial metabolites in amnesic mild cognitive impairment and Alzheimer's disease: signals in host-microbe interplay, *Nutrients* 13 (1) (2021) 228.
- [164] E.E. Canfora, J.W. Jocken, E.E. Blaak, Short-chain fatty acids in control of body weight and insulin sensitivity, *Nat. Rev. Endocrinol.* 11 (10) (2015) 577–591.
- [165] M. Müller, M.A.G. Hernández, G.H. Goossens, D. Reijnders, J.J. Holst, J.W. E. Jocken, H. van Eijk, E.E. Canfora, E.E. Blaak, Circulating but not faecal short-chain fatty acids are related to insulin sensitivity, lipolysis and GLP-1 concentrations in humans, *Sci. Rep.* 9 (1) (2019) 12515.
- [166] S. Hald, A.G. Schioldan, M.E. Moore, A. Dige, H.N. Lærke, J. Agnholt, K.E. Bach Knudsen, K. Hermansen, M.L. Marco, S. Gregersen, J.F. Dahlerup, Effects of arabinoxylan and resistant starch on intestinal microbiota and short-chain fatty acids in subjects with metabolic syndrome: a randomised crossover study, *PLoS One* 11 (7) (2016) e0159223.
- [167] K. Kalecký, D.C. German, A.A. Montillo, T. Bottiglieri, Targeted metabolomic analysis in Alzheimer's disease plasma and brain tissue in non-hispanic whites, *J. Alzheimer's Disease*: JAD 86 (4) (2022) 1875–1895.
- [168] J.R. Swann, S.O. Spitzer, R. Diaz Heijtz, Developmental signatures of microbiota-derived metabolites in the mouse brain, *Metabolites* 10 (5) (2020) 172.
- [169] C.-F. Huang, A. Chen, S.-Y. Lin, M.-L. Cheng, M.-S. Shiao, T.-Y. Mao, A metabolomics approach to investigate the proceedings of mitochondrial dysfunction in rats from prediabetes to diabetes, *Saudi J Biol Sci* 28 (8) (2021) 4762–4769.
- [170] L. Men, Z. Pi, Y. Zhou, M. Wei, Y. Liu, F. Song, Z. Liu, Urine metabolomics of high-fat diet induced obesity using UHPLC-Q-TOF-MS, *J. Pharm. Biomed. Anal.* 132 (2017) 258–266.
- [171] H.T. Yu, X.Y. Fu, B. Xu, L.L. Zuo, H.B. Ma, S.R. Wang, Untargeted metabolomics approach (UPLC-Q-TOF-MS) explores the biomarkers of serum and urine in overweight/obese young men, *Asia Pac. J. Clin. Nutr.* 27 (5) (2018) 1067–1076.
- [172] A.H. Zhang, H. Sun, G.L. Yan, Y. Yuan, Y. Han, X.J. Wang, Metabolomics study of type 2 diabetes using ultra-performance LC-ESI/quadropole-TOF high-definition MS coupled with pattern recognition methods, *J. Physiol. Biochem.* 70 (1) (2014) 117–128.
- [173] Y.M. Tan, Y. Gao, G. Teo, H.W.L. Koh, E.S. Tai, C.M. Khoo, K.P. Choi, L. Zhou, H. Choi, Plasma metabolome and lipidome associations with type 2 diabetes and diabetic nephropathy, *Metabolites* 11 (4) (2021) 228.

- [174] B. Opdebeeck, S. Maudsley, A. Azmi, A. De Maré, W. De Leger, B. Meijers, A. Verhulst, P. Evenepoel, P.C. D'Haese, E. Neven, Indoxyl sulfate and p-cresyl sulfate promote vascular calcification and associate with glucose intolerance, *J. Am. Soc. Nephrol.* 30 (5) (2019) 751–766.
- [175] A. Molinaro, P. Bel Lassen, M. Henricsson, H. Wu, S. Adriouch, E. Belda, R. Chakaroun, T. Nielsen, P.-O. Bergh, C. Rouault, S. André, F. Marquet, F. Andreelli, J.-E. Salem, K. Assmann, J.-P. Bastard, S. Forslund, E. Le Chatelier, G. Falony, N. Pons, E. Prifti, B. Quinquis, H. Roume, S. Vieira-Silva, T.H. Hansen, H.K. Pedersen, C. Lewinter, N.B. Sønderskov, R. Alves, C. Amouyal, E.A.A. Galijatovic, O. Barthelemy, J.-P. Batisse, M. Berland, R. Bittar, H. Blottière, F. Bosquet, R. Boubrit, O. Bourron, M. Camus, D. Cassuto, J. Chilloux, C. Ciangura, L.P. Coelho, J.-P. Collet, M.-C. Dao, M. Djebbar, A. Doré, L. Engelbrechtsen, S. Fellahi, L. Fezeu, S. Fromentin, P. Giral, J.P. Gotze, A. Hartemann, J.J. Holst, S. Herberg, G. Helft, M. Hornbak, J.-S. Hulot, R. Isnard, S. Jaqueminet, N.R. Jørgensen, H. Julienne, J. Justesen, J. Kammer, N. Krarup, M. Kerneis, J. Khemis, N.B. Kristensen, M. Kuhn, V. Lejard, F. Levenez, L. Lucas-Martini, R. Massey, N. Maziers, J. Medina-Stamminger, G. Montalescot, S. Moutel, L.P. Le Pavin, C. Poitou, F. Pousset, L. Pouzoulet, S. Schmidt, L. Moitinho-Silva, J. Silvain, N. Sokolovska, S. Touch, M. Svendstrup, T. Swartz, T. Vanduyvenboden, C. Vatiér, S. Walther, L. Køber, H. Vestergaard, T. Hansen, J.-D. Zucker, P. Galan, M.-E. Dumas, J. Raes, J.-M. Oppert, I. Letunic, J. Nielsen, P. Bork, S.D. Ehrlich, M. Stumvoll, O. Pedersen, J. Aron-Wisniewsky, K. Clément, F. Bäckhed, C. The MetaCardis, Imidazole propionate is increased in diabetes and associated with dietary patterns and altered microbial ecology, *Nature Communications* 11(1) (2020) 5881.
- [176] J. van Son, M.J. Serlie, M. Ståhlman, F. Bäckhed, M. Nieuwdorp, J. Aron-Wisniewsky, Plasma Imidazole Propionate Is Positively Correlated with Blood Pressure in Overweight and Obese Humans, *Nutrients* 13 (8) (2021) 2706.
- [177] K. Lindkvist, Imidazole propionate- a novel link between the human gut microbiota and development of insulin resistance in adipose tissue, Lund University, Sweden, Digital Science & Research Solutions, 2021.
- [178] M. Kori, B. Aydin, S. Unal, K.Y. Arga, K. d., Metabolic biomarkers and neurodegeneration: a pathway enrichment analysis of Alzheimer's disease, Parkinson's disease, and amyotrophic lateral sclerosis, *OMICS: A J. Integr. Biol.* 20 (11) (2016) 645–661.
- [179] M.G. Fleszar, J. Wiśniewski, M. Zboch, D. Diakowska, A. Gamian, M. Krzystek-Korpacka, Targeted metabolomic analysis of nitric oxide/L-arginine pathway metabolites in dementia: association with pathology, severity, and structural brain changes, *Sci. Rep.* 9 (1) (2019), 13764 13764.
- [180] Y. Gong, Y. Liu, L. Zhou, X. Di, W. Li, Q. Li, K. Bi, A UHPLC-TOF/MS method based metabolomic study of total ginsenosides effects on Alzheimer disease mouse model, *J. Pharm. Biomed. Anal.* 115 (2015) 174–182.
- [181] R. González-Domínguez, T. García-Barrera, J.L. Gómez-Ariza, Metabolite profiling for the identification of altered metabolic pathways in Alzheimer's disease, *J. Pharm. Biomed. Anal.* 107 (2015) 75–81.
- [182] Y. Duan, H. Sun, Y. Yao, L. Han, L. Chen, Perturbation of serum metabolome in relation to type 2 diabetes mellitus and urinary levels of phthalate metabolites and bisphenols, *Environ. Int.* 155 (2021), 106609.
- [183] M.P. Bellissimo, Q. Cai, T.R. Ziegler, K.H. Liu, P.H. Tran, M.B. Vos, G.S. Martin, D. P. Jones, T. Yu, J.A. Alvarez, Plasma high-resolution metabolomics differentiates adults with normal weight obesity from lean individuals, *Obesity (Silver Spring)* 27 (11) (2019) 1729–1737.
- [184] P. Drábková, J. Šanderová, J. Kovařík, R. kandár, An Assay of Selected Serum Amino Acids in Patients with Type 2 Diabetes Mellitus, *Advances in clinical and experimental medicine: official organ Wroclaw Medical University* 24(3) (2015) 447–51.
- [185] B. Christopher, Newgard, interplay between lipids and branched-chain amino acids in development of insulin resistance, *Cell Metab.* 15 (5) (2012) 606–614.
- [186] L.O. Li, Y.-F. Hu, L. Wang, M. Mitchell, A. Berger, R.A. Coleman, Early hepatic insulin resistance in mice: a metabolomics analysis, *Mol. Endocrinol.* 24 (3) (2010) 657–666.
- [187] O. Zhenyukh, E. Civantos, M. Ruiz-Ortega, M.S. Sánchez, C. Vázquez, C. Peiró, J. Egido, S. Mas, High concentration of branched-chain amino acids promotes oxidative stress, inflammation and migration of human peripheral blood mononuclear cells via mTORC1 activation, *Free Radic. Biol. Med.* 104 (2017) 165–177.
- [188] T.J. Wang, M.G. Larson, R.S. Vasan, S. Cheng, E.P. Rhee, E. McCabe, G.D. Lewis, C.S. Fox, P.F. Jacques, C. Fernandez, C.J. O'Donnell, S.A. Carr, V.K. Mootha, J. C. Florez, A. Souza, O. Melander, C.B. Clish, R.E. Gerszten, Metabolite profiles and the risk of developing diabetes, *Nat. Med.* 17 (4) (2011) 448–453.
- [189] A.M. Koopen, N.C. de Clercq, M.V. Warmbrunn, H. Herrema, M. Davids, P.F. de Groot, R.S. Kootte, K.E.C. Bouter, M. Nieuwdorp, A.K. Groen, A. Prodan, Plasma metabolites related to peripheral and hepatic insulin sensitivity are not directly linked to gut microbiota composition, *Nutrients* 12 (8) (2020) 2308.
- [190] J.M. Rutkowski, T.A. Knotts, K.D. Ono-Moore, C.S. McCoin, S. Huang, D. Schneider, S. Singh, S.H. Adams, D.H.J.A.j.o.p.-e. Hwang, metabolism, Acylcarnitines activate proinflammatory signaling pathways, 306(12) (2014) E1378-E1387.
- [191] C. Aguer, C.S. McCoin, T.A. Knotts, A.B. Thrush, K. Ono-Moore, R. McPherson, R. Dent, D.H. Hwang, S.H. Adams, M.-E.J.T.F.J. Harper, Acylcarnitines: potential implications for skeletal muscle insulin resistance, 29(1) (2015) 336-345.
- [192] D.H. Bergin, Y. Jing, B.G. Mockett, H. Zhang, W.C. Abraham, P. Liu, Altered plasma arginine metabolome precedes behavioural and brain arginine metabolomic profile changes in the APPsw/PS1ΔE9 mouse model of Alzheimer's disease, *Transl. Psychiatry* 8 (1) (2018) 108.
- [193] O. Kóvamees, A. Shemyakin, J. Pernow, Amino acid metabolism reflecting arginase activity is increased in patients with type 2 diabetes and associated with endothelial dysfunction, *Diab. Vasc. Dis. Res.* 13 (5) (2016) 354–360.
- [194] W. Durante, F.K. Johnson, R.A. Johnson, Arginase: a critical regulator of nitric oxide synthesis and vascular function, *Clin. Exp. Pharmacol. Physiol.* 34 (9) (2007) 906–911.
- [195] T. Togo, O. Katsuse, E. Iseki, Nitric oxide pathways in Alzheimer's disease and other neurodegenerative dementias, *Neurol. Res.* 26 (5) (2004) 563–566.
- [196] S.V. Ovsepian, V.B. O'Leary, Can arginase inhibitors be the answer to therapeutic challenges in Alzheimer's disease? *Neurotherapeutics: J. Am. Soc. Exp. NeuroTherapeutics* 15 (4) (2018) 1032–1035.
- [197] A.M. Amin, H. Mostafa, N.H. Arif, M.A.S.K. Abdul Kader, Y. Kah Hay, Metabolomics profiling and pathway analysis of human plasma and urine reveal further insights into the multifactorial nature of coronary artery disease, *Clin. Chim. Acta* 493 (2019) 112–122.
- [198] S. Bhattacharya, C.B. Granger, D. Craig, C. Haynes, J. Bain, R.D. Stevens, E. R. Hauser, C.B. Newgard, W.E. Kraus, L.K. Newby, S.H. Shah, Validation of the association between a branched chain amino acid metabolite profile and extremes of coronary artery disease in patients referred for cardiac catheterization, *Atherosclerosis* 232 (1) (2014) 191–196.
- [199] A.A. Vaarhorst, A. Verhoeven, C.M. Weller, S. Böhringer, S. Göraler, A. Meissner, A.M. Deelder, P. Henneman, A.P. Gorgels, P.A. van den Brandt, L.J. Schouten, M. M. van Greevenbroek, A.H. Merry, W.M. Verschuren, A.M. van den Maagdenberg, K.W. van Dijk, A. Isaacs, D. Boomsma, B.A. Oostra, C.M. van Duijn, J.W. Jukema, J.M. Boer, E. Feskens, B.T. Heijmans, P.E. Slagboom, A metabolomic profile is associated with the risk of incident coronary heart disease, *Am. Heart J.* 168 (1) (2014) 45–52.e7.
- [200] C.M. Laborde, L. Mourino-Alvarez, M. Posada-Ayala, G. Alvarez-Llamas, M.G. Serranillos-Reus, J. Moreu, F. Vivanco, L.R. Padiál, M.G.J.M. Barderas, Plasma metabolomics reveals a potential panel of biomarkers for early diagnosis in acute coronary syndrome, 10(3) (2014) 414-424.
- [201] X. Liu, J. Gao, J. Chen, Z. Wang, Q. Shi, H. Man, S. Guo, Y. Wang, Z. Li, W. Wang, Identification of metabolic biomarkers in patients with type 2 diabetic coronary heart diseases based on metabolomic approach, *Sci. Rep.* 6 (1) (2016) 30785.
- [202] Z. Pang, G. Zhou, J. Ewald, L. Chang, O. Hacariz, N. Basu, J. Xia, Using MetaboAnalyst 5.0 for LC-HRMS spectra processing, multi-omics integration and covariate adjustment of global metabolomics data, *Nat. Protoc.* (2022).
- [203] N.D. Palmer, R.D. Stevens, P.A. Antinozzi, A. Anderson, R.N. Bergman, L. E. Wagenknecht, C.B. Newgard, D.W. Bowden, Metabolomic profile associated with insulin resistance and conversion to diabetes in the insulin resistance atherosclerosis study, *J. Clin. Endocrinol. Metab.* 100 (3) (2015). E463 E8.
- [204] F. Xu, S. Tavintharan, C.F. Sum, K. Woon, S.C. Lim, C.N. Ong, Metabolic signature shift in type 2 diabetes mellitus revealed by mass spectrometry-based metabolomics, *J. Clin. Endocrinol. Metab.* 98 (6) (2013). E1060 E5.
- [205] A.V. Hartstra, P.F. de Groot, D. Mendes Bastos, E. Levin, M.J. Serlie, M.R. Soeters, C.T. Pekmez, L.O. Dragsted, M.T. Ackermans, A.K. Groen, M. Nieuwdorp, Correlation of plasma metabolites with glucose and lipid fluxes in human insulin resistance, 6(3) (2020) 340-349.
- [206] Y. Zhou, L. Qiu, Q. Xiao, Y. Wang, X. Meng, R. Xu, S. Wang, R. Na, Obesity and diabetes related plasma amino acid alterations, *Clin. Biochem.* 46 (15) (2013) 1447–1452.
- [207] L.-L. Gong, S. Yang, W. Zhang, F.-F. Han, L.-L. Xuan, Y.-L. Lv, H. Liu, L.-H. Liu, Targeted metabolomics for plasma amino acids and carnitines in patients with metabolic syndrome using HPLC-MS/MS, *Dis. Markers* 2020 (2020) 8842320.
- [208] A. Siopi, O. Deda, V. Manou, S. Kellis, I. Kosmidis, D. Kominou, N. Raikos, K. Christoulas, G.A. Theodoridis, V. Mougios, Effects of Different exercise modes on the urinary metabolic fingerprint of men with and without metabolic syndrome, *Metabolites* 7 (1) (2017) 5.
- [209] E.-Y. Won, M.-K. Yoon, S.-W. Kim, Y. Jung, H.-W. Bae, D. Lee, S.G. Park, C.-H. Lee, G.-S. Hwang, S.-W. Chi, Gender-specific metabolomic profiling of obesity in leptin-deficient ob/ob mice by 1H NMR spectroscopy, *PLoS One* 8 (10) (2013) e75998.
- [210] E. Trushina, E. Nemutlu, S. Zhang, T. Christensen, J. Camp, J. Mesa, A. Siddiqui, Y. Tamura, H. Sasaki, T.M. Wengenack, P.P. Dzeja, J.F. Poduslo, Defects in mitochondrial dynamics and metabolomic signatures of evolving energetic stress in mouse models of familial Alzheimer's disease, *PLoS One* 7 (2) (2012) e32737.
- [211] Y.-Y. Wang, N. Zhou, Y.-P. Si, Z.-Y. Bai, M. Li, W.-S. Feng, X.-K. Zheng, A UPLC-Q-TOF/MS-based metabolomics study on the effect of coralodiscus flabellatus (Craib) B. L. burtt extract on Alzheimer's disease, *Evid. Based Complement. Alternat. Med.* 2021 (2021), 8868690 8868690.
- [212] N.B. Ruderman, A.K. Saha, Metabolic syndrome: adenosine monophosphate-activated protein kinase and malonyl coenzyme A, *Obesity* 14 (S2) (2006) 25S–33S.
- [213] X. Yang, Y. Zhao, Q. Sun, Y. Yang, Y. Gao, W. Ge, J. Liu, X. Xu, J. Zhang, Adenosine accumulation causes metabolic disorders in testes and associates with lower testosterone level in obese mice, *Mol. Reprod. Dev.* 87 (2) (2020) 241–250.
- [214] Y. Zhang, Z. Wang, Y. Zhao, M. Zhao, S. Wang, Z. Hua, J. Zhang, The plasma 5'-AMP acts as a potential upstream regulator of hyperglycemia in type 2 diabetic mice, *Am. J. Phys. Endocrinol. Metab.* 302 (3) (2012) E325–E333.
- [215] R.M. Salek, J. Xia, A. Innes, B.C. Sweatman, R. Adalbert, S. Randle, E. McGowan, P.C. Emson, J.L. Griffin, A metabolomic study of the CRND8 transgenic mouse model of Alzheimer's disease, *Neurochem. Int.* 56 (8) (2010) 937–947.
- [216] Y. Lin, Z.Y. Wang, M.J. Wang, Z.M. Jiang, Y.Q. Qin, T.Q. Huang, Y. Song, H. T. Liang, E.H. Liu, Baicalin attenuate diet-induced metabolic syndrome by improving abnormal metabolism and gut microbiota, *Eur. J. Pharmacol.* 925 (2022), 174996.

- [217] S.J. Mihalik, B.H. Goodpaster, D.E. Kelley, D.H. Chace, J. Vockley, F.G.S. Toledo, J.P. DeLany, Increased levels of plasma acylcarnitines in obesity and type 2 diabetes and identification of a marker of glucolipotoxicity, *Diabetes* 18(9) (2010) 1695–1700.
- [218] S.C. Moore, C.E. Matthews, J.N. Sampson, R.Z. Stolzenberg-Solomon, W. Zheng, Q. Cai, Y.T. Tan, W.-H. Chow, B.-T. Ji, D.K.J.M. Liu, Human metabolic correlates of body mass index, *Diabetes* 10(2) (2014) 259–269.
- [219] J. Shi, Y. Wang, G. Luo, UPLC-TOF MS-based metabolomic study on coadministration of huperzine A and ligustrazine phosphate for treatment of Alzheimer's disease, *Chromatographia* 74 (11) (2011) 827–832.
- [220] S.V. Konstantinova, G.S. Tell, S.E. Vollset, O. Nygård, Ø. Bleie, P.M. Ueland, Divergent associations of plasma choline and betaine with components of metabolic syndrome in middle age and elderly men and women, *J. Nutr.* 138 (5) (2008) 914–920.
- [221] A. Stopi, O. Deda, V. Manou, I. Kosmidis, D. Kominou, N. Raikos, G. A. Theodoridis, V. Mougios, Comparison of the serum metabolic fingerprint of different exercise modes in men with and without metabolic syndrome, *Metabolites* 9 (6) (2019) 116.
- [222] A.V. Hartstra, P.F. de Groot, D. Mendes Bastos, E. Levin, M.J. Serlie, M.R. Soeters, C.T. Pekmez, L.O. Dragsted, M.T. Ackermans, A.K. Groen, M. Nieuwdorp, Correlation of plasma metabolites with glucose and lipid fluxes in human insulin resistance, *Obes. Sci. Pract.* 6 (3) (2020) 340–349.
- [223] H.J. Kim, J.H. Kim, S. Noh, H.J. Hur, M.J. Sung, J.T. Hwang, J.H. Park, H.J. Yang, M.S. Kim, D.Y. Kwon, S.H. Yoon, Metabolomic analysis of livers and serum from high-fat diet induced obese mice, *J. Proteome Res.* 10 (2) (2011) 722–731.
- [224] M.V. Sanz-Fernandez, L. Torres-Rovira, J.L. Pesantez-Pacheco, M. Vazquez-Gomez, C. Garcia-Contreras, S. Astiz, A. Gonzalez-Bulnes, A cross-sectional study of obesity effects on the metabolomic profile of a leptin-resistant swine model, *Metabolites* 10 (3) (2020) 89.
- [225] X. Liu, X. Gao, R. Zhang, Z. Liu, N. Shen, Y. Di, T. Fang, H. Li, F. Tian, Discovery and comparison of serum biomarkers for diabetes mellitus and metabolic syndrome based on UPLC-Q-TOF/MS, *Clin. Biochem.* 82 (2020) 40–50.
- [226] E. Kim, Y.S. Jung, H. Kim, J.S. Kim, M. Park, J. Jeong, S.K. Lee, H.G. Yoon, G. S. Hwang, K. Namkoong, Metabolomic signatures in peripheral blood associated with Alzheimer's disease amyloid- β -induced neuroinflammation, *J. Alzheimer's Disease* 42 (2) (2014) 421–433.
- [227] M.-E. Dumas, R.H. Barton, A. Teye, O. Cloarec, C. Blancher, A. Rothwell, J. Fearnside, R. Tatout, V. Blanc, J.C. Lindon, S.C. Mitchell, E. Holmes, M. I. McCarthy, J. Scott, D. Gauguier, J.K. Nicholson, Metabolic profiling reveals a contribution of gut microbiota to fatty liver phenotype in insulin-resistant mice, *Proc. Natl. Acad. Sci.* 103 (33) (2006) 12511–12516.
- [228] W. Liu, J. Xu, T. Dai, G. Shen, J. Feng, An integrating strategy for serum metabolomics and microarray analysis to expand the understanding of diet-induced obesity, *Anal. Methods* 13 (28) (2021) 3127–3135.
- [229] H.S. Mohammad Noor, N.H. Ismail, N. Kasim, A. Mediani, R. Mohd Zohdi, A. M. Ali, N. Mat, N.A. Al-Mekhlafi, Urinary metabolomics and biochemical analysis of antihyperglycemic effect of ficus deltoidea jack varieties in streptozotocin-nicotinamide-induced diabetic rats, *Appl. Biochem. Biotechnol.* 192 (1) (2020) 1–21.
- [230] Y. Cui, X. Liu, M. Wang, L. Liu, X. Sun, L. Ma, W. Xie, C. Wang, S. Tang, D. Wang, Q. Wu, Lysophosphatidylcholine and amide as metabolites for detecting alzheimer disease using ultrahigh-performance liquid chromatography-quadrupole time-of-flight mass spectrometry-based metabolomics, *J. Neurochem. Exp. Neurol.* 73 (10) (2014) 954–963.
- [231] C. Bruzzzone, R. Gil-Redondo, M. Seco, R. Barragán, L. de la Cruz, C. Cannet, H. Schäfer, F. Fang, T. Diercks, M. Bizkarguenaga, B. González-Valle, A. Lafin, A. Sanz-Parra, O. Coltell, A.L. de Letona, M. Spraul, S.C. Lu, E. Buguianesi, N. Embade, Q.M. Anstee, D. Corella, J.M. Mato, O. Millet, A molecular signature for the metabolic syndrome by urine metabolomics, *Cardiovasc. Diabetol.* 20 (1) (2021), 155–155.
- [232] P. Elliott, J.M. Posma, Q. Chan, I. Garcia-Perez, A. Wijeyesekera, M. Bictash, T. M. Ebbels, H. Ueshima, L. Zhao, L. van Horn, M. Daviglus, J. Stamler, E. Holmes, J.K. Nicholson, Urinary metabolic signatures of human adiposity, *Sci. Transl. Med.* 7 (285) (2015) 285ra62.
- [233] M. Urpi-Sarda, E. Almanza-Aguilera, R. Llorach, R. Vázquez-Fresno, R. Estruch, D. Corella, J.V. Sorli, F. Carmona, A. Sanchez-Pla, J. Salas-Salvadó, C. Andres-Lacueva, Non-targeted metabolomic biomarkers and metabolotypes of type 2 diabetes: A cross-sectional study of PREDIMED trial participants, *Diabetes Metab.* 45 (2) (2019) 167–174.
- [234] H. Lin, Y. An, F. Hao, Y. Wang, H. Tang, Correlations of fecal metabolomic and microbiomic changes induced by high-fat diet in the pre-obesity state, *Sci. Rep.* 6 (2016).
- [235] G. Wang, Y. Zhou, F.J. Huang, H.D. Tang, X.H. Xu, J.J. Liu, Y. Wang, Y.L. Deng, R. J. Ren, W. Xu, J.F. Ma, Y.N. Zhang, A.H. Zhao, S.D. Chen, W. Jia, Plasma metabolite profiles of Alzheimer's disease and mild cognitive impairment, *J. Proteome Res.* 13 (5) (2014) 2649–2658.
- [236] M. Palau-Rodriguez, S. Tulipani, M. Isabel Queipo-Ortuño, M. Urpi-Sarda, F.J. Tinahones, C. Andres-Lacueva, Metabolomic insights into the intricate gut microbial–host interaction in the development of obesity and type 2 diabetes, *Diabetes* 64 (11) (2015).
- [237] N. Friedrich, T. Skaaby, M. Pietzner, K. Budde, B.H. Thuesen, M. Nauck, A. Linneberg, Identification of urine metabolites associated with 5-year changes in biomarkers of glucose homeostasis, *Diabetes Metab.* 44 (3) (2018) 261–268.
- [238] L.D. Whigham, D.E. Butz, H. Dashti, M. Tonelli, L.K. Johnson, M.E. Cook, W. P. Porter, H.R. Eghbalnia, J.L. Markley, S.R. Lindheim, D.A. Schoeller, D. H. Abbott, F.M. Assadi-Porter, Metabolic evidence of diminished lipid oxidation in women with polycystic ovary syndrome, *Curr Metabolomics* 2 (4) (2014) 269–278.
- [239] E. Gralka, C. Luchinat, L. Tenori, B. Ernst, M. Thurnheer, B. Schultes, Metabolomic fingerprint of severe obesity is dynamically affected by bariatric surgery in a procedure-dependent manner, *Am. J. Clin. Nutr.* 102 (6) (2015) 1313–1322.
- [240] Y. Lu, Y. Wang, C.N. Ong, T. Subramaniam, H.W. Choi, J.M. Yuan, W.P. Koh, A. Pan, Metabolic signatures and risk of type 2 diabetes in a Chinese population: an untargeted metabolomics study using both LC-MS and GC-MS, *Diabetologia* 59 (11) (2016) 2349–2359.
- [241] D. Tricò, H. Prinsen, C. Giannini, R. de Graaf, C. Juchem, F. Li, S. Caprio, N. Santoro, R.I. Herzog, Elevated α -hydroxybutyrate and branched-chain amino acid levels predict deterioration of glycemic control in adolescents, *J. Clin. Endocrinol. Metab.* 102 (7) (2017) 2473–2481.
- [242] M.V. Milburn, K.A. Lawton, Application of metabolomics to diagnosis of insulin resistance, *Annu. Rev. Med.* 64 (1) (2013) 291–305.
- [243] M. Piro, M. Tesaro, A. Lena, P. Gentileschi, G. Sica, G. Rodia, M. Annicchiarico-Petruzzelli, V. Rovella, C. Cardillo, G.J.A.A. Melino, Free-amino acid metabolic profiling of visceral adipose tissue from obese subjects, (2020) 1–13.
- [244] M. Bugánová, H. Pelantová, M. Holubová, B. Sedivá, L. Maletínská, B. Železná, J. Kuneš, P. Kačer, M. Kuzma, M. Haluzík, The effects of liraglutide in mice with diet-induced obesity studied by metabolomics, *J. Endocrinol.* 233 (1) (2017) 93–104.
- [245] R.M. Paredes, M. Quinones, K. Marballi, X. Gao, C. Valdez, S.S. Ahuja, D. Velligan, C. Walss-Bass, Metabolomic profiling of schizophrenia patients at risk for metabolic syndrome, *Int. J. Neuropsychopharmacol.* 17 (8) (2014) 1139–1148.
- [246] E. Rodríguez-Gallego, M. Guirio, M. Riera-Borrull, A. Hernandez-Aguilera, R. Marine-Casado, S. Fernandez-Arroyo, R. Beltran-Debon, F. Sabench, M. Hernandez, D.J.Lj.o.o. Del Castillo, Mapping of the circulating metabolome reveals α -ketoglutarate as a predictor of morbid obesity-associated non-alcoholic fatty liver disease, *PLoS One* 10(12) (2015) 279–287.
- [247] S. Polakof, D. Dardevet, B. Lyan, L. Mosoni, E. Gatineau, J.-F.o. Martin, E. Pujos-Guillot, A. Mazur, B.J.J.o.P.R. Comte, Time course of molecular and metabolic events in the development of insulin resistance in fructose-fed rats, *Diabetes* 55(12) (2006) 1862–1874.
- [248] I. Laforest-Lapointe, A.B. Becker, P.J. Mandhane, S.E. Turvey, T.J. Moraes, M. R. Sears, P. Subbarao, L.K. Sycuro, M.B. Azad, M.-C. Arrieta, Maternal consumption of artificially sweetened beverages during pregnancy is associated with infant gut microbiota and metabolic modifications and increased infant body mass index, *Gut Microbes* 13 (1) (2021) 1–15.
- [249] U.K. Sundekilde, C.C. Yde, A.H. Honore, J.M. Caverly Rae, F.R. Burns, P. Mukerji, M.P. Mawn, L. Stenman, Y. Dragan, K. Glover, H.M. Jensen, An integrated multi-omics analysis defines key pathway alterations in a diet-induced obesity mouse model, *Metabolites* 10 (3) (2020).
- [250] C. Sun, M. Gao, F. Wang, Y. Yun, Q. Sun, R. Guo, C. Yan, X. Sun, Y. Li, Serum metabolomic profiling in patients with Alzheimer disease and amnesic mild cognitive impairment by GC/MS, *Biomed. Chromatogr.* 34 (9) (2020) e4875.
- [251] D.F. Stec, C. Henry, D.E. Stec, P. Voziyan, Changes in urinary metabolome related to body fat involve intermediates of choline processing by gut microbiota, *Helveta* 5(4) (2019) e01497–e01497.
- [252] National Institute of Aging, How Is Alzheimer's Disease Treated?, 2021. <https://www.nia.nih.gov/health/how-alzheimers-disease-treated>. (Accessed 29/03/2022).
- [253] M. Wiciński, E. Wódkiewicz, K. Górski, M. Walczak, B. Malinowski, Perspective of SGLT2 inhibition in treatment of conditions connected to neuronal loss: focus on Alzheimer's disease and ischemia-related brain injury, *Pharmaceuticals* 13 (11) (2020) 379.
- [254] A.M. Koenig, D. Mechanic-Hamilton, S.X. Xie, M.F. Combs, A.R. Cappola, L. Xie, J.A. Detre, D.A. Wolk, S.E. Arnold, Effects of the insulin sensitizer metformin in alzheimer disease: pilot data from a randomized placebo-controlled crossover study, *Alzheimer Dis. Assoc. Disord.* 31 (2) (2017) 107–113.
- [255] S. Shakil, Molecular interaction of anti-diabetic drugs with acetylcholinesterase and sodium glucose co-transporter 2, *J. Cell. Biochem.* 118 (11) (2017) 3855–3865.
- [256] P. Heyn, B.C. Abreu, K.J. Ottenbacher, The effects of exercise training on elderly persons with cognitive impairment and dementia: a meta-analysis, *Arch. Phys. Med. Rehabil.* 85 (10) (2004) 1694–1704.
- [257] R.-X. Jia, J.-H. Liang, Y. Xu, Y.-Q. Wang, Effects of physical activity and exercise on the cognitive function of patients with Alzheimer disease: a meta-analysis, *BMC Geriatr.* 19 (1) (2019) 181.
- [258] E. Maliszewska-Cyna, M. Lynch, J. Jordan Oore, P. Michael Nagy, I. Aubert, The benefits of exercise and metabolic interventions for the prevention and early treatment of Alzheimer's disease, *Curr. Alzheimer Res.* 14 (1) (2017) 47–60.
- [259] D. Head, J.M. Bugg, A.M. Goate, A.M. Fagan, M.A. Mintun, T. Benzing, D. M. Holtzman, J.C. Morris, Exercise engagement as a moderator of the effects of APOE genotype on amyloid deposition, *Arch. Neurol.* 69 (5) (2012) 636–643.
- [260] R.J. Colman, R.M. Anderson, S.C. Johnson, E.K. Kastman, K.J. Kosmatka, T.M. Beasley, D.B. Allison, C. Cruzen, H.A. Simmons, J.W. Kemnitz, R. Weindruch, Caloric restriction delays disease onset and mortality in rhesus monkeys, *Science (New York, N.Y.)* 325(5937) (2009) 201–4.
- [261] S. Whillier, Exercise and Insulin Resistance, in: J. Xiao (Ed.), Physical Exercise for Human Health, Springer Singapore, Singapore, 2020, pp. 137–150.
- [262] Y.-C. Liaw, Y.-P. Liaw, T.-H. Lan, Physical activity might reduce the adverse impacts of the FTO gene variant rs3751812 on the body mass index of adults in Taiwan, *Genes (Basel)* 10 (5) (2019) 354.

- [263] C. Van Cauwenberghe, C. Vandendriessche, C. Libert, R.E. Vandembroucke, Caloric restriction: beneficial effects on brain aging and Alzheimer's disease, *Mammalian Genome: Off. J. Int. Mammalian Genome Soc.* 27 (7–8) (2016) 300–319.
- [264] V.K.M. Halagappa, Z. Guo, M. Pearson, Y. Matsuo, R.G. Cutler, F.M. LaFerla, M. P. Mattson, Intermittent fasting and caloric restriction ameliorate age-related behavioral deficits in the triple-transgenic mouse model of Alzheimer's disease, *Neurobiol. Dis.* 26 (1) (2007) 212–220.
- [265] F. Muzio, L. Mondazzi, D. Sommariva, A. Branchi, Long-term effects of low-calorie diet on the metabolic syndrome in obese nondiabetic patients, 28(6) (2005) 1485–1486.
- [266] K.V. Williams, M.L. Mullen, D.E. Kelley, R.R. Wing, The effect of short periods of caloric restriction on weight loss and glycemic control in type 2 diabetes, *Diabetes Care* 21 (1) (1998) 2–8.
- [267] R. Taylor, Caloric restriction for long-term remission of type 2 diabetes, *Clin. Med. (Lond.)* 19 (1) (2019) 37–42.
- [268] N.V. Patel, M.N. Gordon, K.E. Connor, R.A. Good, R.W. Engelman, J. Mason, D. G. Morgan, T.E. Morgan, C.E. Finch, Caloric restriction attenuates A β -deposition in Alzheimer transgenic models, *Neurobiol. Aging* 26 (7) (2005) 995–1000.
- [269] C. Van Cauwenberghe, C. Vandendriessche, C. Libert, R.E. Vandembroucke, Caloric restriction: beneficial effects on brain aging and Alzheimer's disease, *Mamm. Genome* 27 (7) (2016) 300–319.
- [270] J. Wang, L. Ho, W. Qin, A.B. Rocher, I. Seror, N. Humala, K. Maniar, G. Dolios, R. Wang, P.R. Hof, G.M. Pasinetti, Caloric restriction attenuates β -amyloid neuropathology in a mouse model of Alzheimer's disease, 19(6) (2005) 1-18.
- [271] Y. Fu, Y. Chen, L. Li, Y. Wang, X. Kong, J. Wang, Food restriction affects Y-maze spatial recognition memory in developing mice, *Int. J. Dev. Neurosci.* 60 (2017) 8–15.
- [272] C. Li, B. Sadraie, N. Steckhan, C. Kessler, R. Stange, M. Jeitler, A. Michalsen, Effects of a one-week fasting therapy in patients with type-2 diabetes mellitus and metabolic syndrome – a randomized controlled explorative study, *Exp. Clin. Endocrinol. Diabetes* 125 (09) (2017) 618–624.
- [273] K. Gabel, C.M. Kroeger, J.F. Trepanowski, K.K. Hoddy, S. Cienfuegos, F. Kalam, K. A. Varady, Differential effects of alternate-day fasting versus daily calorie restriction on insulin resistance, *Obesity* 27 (9) (2019) 1443–1450.
- [274] M. Bagherniya, A.E. Butler, G.E. Barreto, A. Sahebkar, The effect of fasting or calorie restriction on autophagy induction: a review of the literature, *Ageing Res. Rev.* 47 (2018) 183–197.
- [275] A.M. Kocot, B. Wróblewska, Nutritional strategies for autophagy activation and health consequences of autophagy impairment, *Nutrition* 111686 (2022).
- [276] J. Zhang, Z. Zhan, X. Li, A. Xing, C. Jiang, Y. Chen, W. Shi, L. An, Intermittent fasting protects against Alzheimer's disease possible through restoring aquaporin-4 polarity, *Front. Mol. Neurosci.* 10 (2017).
- [277] J.C. Newman, E. Verdin, β -hydroxybutyrate: much more than a metabolite, *Diabetes Res. Clin. Pract.* 106 (2) (2014) 173–181.
- [278] L.M. Cox, M.J. Schafer, J. Sohn, J. Vincentini, H.L. Weiner, S.D. Ginsberg, M. J. Blaser, Caloric restriction slows age-related microbiota changes in an Alzheimer's disease model in female mice, *Sci. Rep.* 9 (1) (2019) 17904.
- [279] G.M. Broom, I.C. Shaw, J.J. Rucklidge, The ketogenic diet as a potential treatment and prevention strategy for Alzheimer's disease, *Nutrition* 60 (2019) 118–121.
- [280] B.J. Neth, A. Mintz, C. Whitlow, Y. Jung, K. Solingapuram Sai, T.C. Register, D. Kellar, S.N. Lockhart, S. Hoscheidt, J. Maldjian, A.J. Heslegrave, K. Blennow, S. C. Cunnane, C.-A. Castellano, H. Zetterberg, S. Craft, Modified ketogenic diet is associated with improved cerebrospinal fluid biomarker profile, cerebral perfusion, and cerebral ketone body uptake in older adults at risk for Alzheimer's disease: a pilot study, *Neurobiol. Aging* 86 (2020) 54–63.
- [281] A. Pinto, A. Bonucci, E. Maggi, M. Corsi, R. Businaro, Anti-oxidant and anti-inflammatory activity of ketogenic diet: new perspectives for neuroprotection in Alzheimer's disease, *Antioxidants* 7 (5) (2018) 63.
- [282] M.S. Uddin, M.T. Kabir, D. Tewari, A. Al Mamun, G.E. Barreto, S.G. Bungau, M. N. Bin-Jumah, M.M. Abdel-Daim, G.M. Ashraf, Emerging therapeutic promise of ketogenic diet to attenuate neuropathological alterations in Alzheimer's disease, *Mol. Neurobiol.* 57 (12) (2020) 4961–4977.
- [283] L.A. McKenzie, J.S. Hallberg, C.B. Creighton, M.B. Volk, M.T. Link, K.M. Abner, M.R. Glon, P.J. McCarter, S.J. Volek, D.S. Phinney, A novel intervention including individualized nutritional recommendations reduces hemoglobin A1c level, medication use, and weight in type 2 diabetes, *JMIR Diabetes* 2 (1) (2017) e5.
- [284] R.D. Feinman, W.K. Pogozelski, A. Astrup, R.K. Bernstein, E.J. Fine, E. C. Westman, A. Accurso, L. Frassetto, B.A. Gower, S.I. McFarlane, J.V. Nielsen, T. Krarup, L. Saslow, K.S. Roth, M.C. Vernon, J.S. Volek, G.B. Wilshire, A. Dahlqvist, R. Sundberg, A. Childers, K. Morrison, A.H. Manninen, H.M. Dashti, R.J. Wood, J. Wortman, N. Worm, Dietary carbohydrate restriction as the first approach in diabetes management: critical review and evidence base, *Nutrition* 31 (1) (2015) 1–13.
- [285] I. Van der Auwera, S. Wera, F. Van Leuven, S.T. Henderson, A ketogenic diet reduces amyloid beta 40 and 42 in a mouse model of Alzheimer's disease, *Nutr. Metab.* 2 (1) (2005) 28.
- [286] R.D. Feinman, The biochemistry of low-carbohydrate and ketogenic diets, *Curr. Opin. Endocrinol. Diabet. Obesity* 27 (5) (2020).
- [287] M. Ułamek-Kozioł, S.J. Czuczwar, S. Januszewski, R. Pluta, Ketogenic diet and epilepsy, *Nutrients* 11 (10) (2019) 2510.
- [288] I. D'Andrea Meira, T.T. Romão, H.J. Pires do Prado, L.T. Krüger, M.E.P. Pires, P. O. da Conceição, Ketogenic Diet and Epilepsy: What We Know So Far, *Frontiers in Neuroscience* 13 (2019).
- [289] M. Röhling, K. Kempf, W. Banzer, A. Berg, K.M. Braumann, S. Tan, M. Halle, D. McCarthy, M. Pinget, H.G. Predel, J. Scholze, H. Toplak, S. Martin, G. Acoorh Study, Prediabetes Conversion to Normoglycemia Is Superior Adding a Low-Carbohydrate and Energy Deficit Formula Diet to Lifestyle Intervention-A 12-Month Subanalysis of the ACOORH Trial, *Nutrients* 12(7) (2020).
- [290] S.J. Athinarayanan, R.N. Adams, S.J. Hallberg, A.L. McKenzie, N.H. Bhanpuri, W. W. Campbell, J.S. Volek, S.D. Phinney, J.P. McCarter, Long-term effects of a novel continuous remote care intervention including nutritional ketosis for the management of type 2 diabetes: A 2-year non-randomized clinical, *Trial* 10 (348) (2019).
- [291] S.R. Ahmed, S. Bellamkonda, M. Zilbermint, J. Wang, R.R. Kalyani, Effects of the low carbohydrate, high fat diet on glycemic control and body weight in patients with type 2 diabetes: experience from a community-based cohort, *BMJ Open Diabetes Res. Care* 8 (1) (2020).
- [292] D.J. Unwin, S.D. Tobin, S.W. Murray, C. Delon, A. Brady, Substantial and sustained improvements in blood pressure, weight and lipid profiles from a carbohydrate restricted diet: an observational study of insulin resistant patients in primary care, *Int. J. Environ. Res. Public Health* 16 (15) (2019) 2680.
- [293] J.S. Volek, M.L. Fernandez, R.D. Feinman, S.D. Phinney, Dietary carbohydrate restriction induces a unique metabolic state positively affecting atherogenic dyslipidemia, fatty acid partitioning, and metabolic syndrome, *Prog. Lipid Res.* 47 (5) (2008) 307–318.
- [294] L. Moretti, T. Canada, A randomized study comparing the effects of a low-carbohydrate diet and a conventional diet on lipoprotein subfractions and c-reactive protein levels in patients with severe obesity, *Nutrit. Clin. Pract.: Off. Publicat. Am. Soc. Parenteral Enteral Nutrition* 21 (2) (2006) 187–188.
- [295] H.M. Dasthi, Y.Y. Bo-Abbas, S.K. Asfar, T.C. Mathew, T. Hussein, A. Behbahani, M.A. Khoussheed, H.M. Al-Sayer, N.S. Al-Zaid, Ketogenic diet modifies the risk factors of heart disease in obese patients, *Nutrition* 19 (10) (2003) 901–902.
- [296] N.H. Bhanpuri, S.J. Hallberg, P.T. Williams, A.L. McKenzie, K.D. Ballard, W. W. Campbell, J.P. McCarter, S.D. Phinney, J.S. Volek, Cardiovascular disease risk factor responses to a type 2 diabetes care model including nutritional ketosis induced by sustained carbohydrate restriction at 1 year: an open label, non-randomized, controlled study, *Cardiovasc. Diabetol.* 17 (1) (2018) 56.
- [297] D. Australia, Position Statement Low Carbohydrate Eating for People with Diabetes; 2018, 2020.
- [298] T.J.C.J.o.D. Barnes, Diabetes Canada Position Statement on Low Carbohydrate Diets for Adults with Diabetes: A Rapid Review, (2020).
- [299] A.B. Evert, M. Dennison, C.D. Gardner, W.T. Garvey, K.H.K. Lau, J. MacLeod, J. Mitri, R.F. Pereira, K. Rawlings, S.J.D.C. Robinson, Nutrition therapy for adults with diabetes or prediabetes: a consensus report, 42(5) (2019) 731-754.
- [300] M.J. Davies, D.A. D'Alessio, J. Fradkin, W.N. Kerman, C. Mathieu, G. Mingrone, P. Rossing, A. Tsapas, D.J. Wexler, J.B.J.D. Buse, Management of hyperglycaemia in type 2 diabetes, 2018. A consensus report by the American Diabetes Association (ADA) and the European Association for the Study of Diabetes (EASD), 61(12) (2018) 2461-2498.
- [301] M.C.L. Phillips, L.M. Deprez, G.M.N. Mortimer, D.K.J. Murtagh, S. McCoy, R. Mylchreest, L.J. Gilbertson, K.M. Clark, P.V. Simpson, E.J. McManus, J.-E. Oh, S. Yadavraj, V.M. King, A. Pillai, B. Romero-Ferrando, M. Brinkhuis, B. M. Copeland, S. Samad, S. Liao, J.A.C. Schepel, Randomized crossover trial of a modified ketogenic diet in Alzheimer's disease, *Alzheimers Res. Ther.* 13 (1) (2021) 51.
- [302] M. Nagao, R. Toh, Y. Irino, T. Mori, H. Nakajima, T. Hara, T. Honjo, S. Satomi-Kobayashi, T. Shinke, H. Tanaka, T. Ishida, K.-I. Hirata, β -Hydroxybutyrate elevation as a compensatory response against oxidative stress in cardiomyocytes, *Biochem. Biophys. Res. Commun.* 475 (4) (2016) 322–328.
- [303] L.C. Gormsen, M. Svart, H.H. Thomsen, E. Søndergaard, M.H. Vendelbo, N. Christensen, L.P. Tolbod, H.J. Harms, R. Nielsen, H. Wiggers, N. Jessen, J. Hansen, H.E. Bøtger, N. Møller, Ketone body infusion with 3-hydroxybutyrate reduces myocardial glucose uptake and increases blood flow in humans, *A Positron Emission Tomography Study* 6 (3) (2017) e005066.
- [304] G. Aubert, O.J. Martin, J.L. Horton, L. Lai, R.B. Vega, T.C. Leone, T. Koves, S. J. Gardell, M. Krüger, C.L. Hoppel, E.D. Lewandowski, P.A. Crawford, D. M. Muoio, D.P. Kelly, The failing heart relies on ketone bodies as a fuel, *Fuel* 133 (8) (2016) 698–705.
- [305] M. Lilamand, F. Mouton-Liger, C. Paquet, Ketogenic diet therapy in Alzheimer's disease: an updated review, *Curr. Opin. Clin. Nutr. Metab. Care* 24 (4) (2021).
- [306] J. Takeishi, Y. Tatewaki, T. Nakase, Y. Takano, N. Tomita, S. Yamamoto, T. Mutoh, Y. Taki, Alzheimer's disease and type 2 diabetes mellitus: the use of MCT oil and a ketogenic diet, *Int. J. Mol. Sci.* 22 (22) (2021) 12310.
- [307] Q. Xu, Y. Zhang, X. Zhang, L. Liu, B. Zhou, R. Mo, Y. Li, H. Li, F. Li, Y. Tao, Y. Liu, C. Xue, Medium-chain triglycerides improved cognition and lipid metabolomics in mild to moderate Alzheimer's disease patients with APOE4-/-: a double-blind, randomized, placebo-controlled crossover trial, *Clin. Nutr.* 39 (7) (2020) 2092–2105.
- [308] K.J. Bough, J. Wetherington, B. Hassel, J.F. Pare, J.W. Gawryluk, J.G. Greene, R. Shaw, Y. Smith, J.D. Geiger, R.J. Dingleline, Mitochondrial biogenesis in the anticonvulsant mechanism of the ketogenic diet, *Ann. Neurol.* 60 (2) (2006) 223–235.
- [309] S. Pavón, E. Lázaro, O. Martínez, I. Amaya, J.F. López-Paz, P. Caballero, M. Al-Rashida, P.M. Luna, M. García, M. Pérez, S. Berrocoso, A.A. Rodríguez, P. Pérez-Núñez, Ketogenic diet and cognition in neurological diseases: a systematic review, *Nutr. Rev.* 79 (7) (2021) 802–813.
- [310] C.M. Kang, B. Yun, M. Kim, M. Song, Y.-H. Kim, S.H. Lee, H. Lee, S.M. Lee, S.-M. Lee, Postoperative serum metabolites of patients on a low carbohydrate ketogenic diet after pancreatectomy for pancreaticobiliary cancer: a nontargeted metabolomics pilot study, *Sci. Rep.* 9 (1) (2019) 16820.

- [311] G. Castaldo, I. Pagano, M. Grimaldi, C. Marino, P. Molettieri, A. Santoro, I. Stillitano, R. Romano, P. Montoro, A.M. D'Ursi, L. Rastrelli, Effect of very-low-calorie ketogenic diet on psoriasis patients: a nuclear magnetic resonance-based metabolomic study, *J. Proteome Res.* (2020).
- [312] C.A. Olson, H.E. Vuong, J.M. Yano, Q.Y. Liang, D.J. Nusbaum, E.Y. Hsiao, The gut microbiota mediates the anti-seizure effects of the ketogenic diet, *Cell* 173 (7) (2018) 1728–1741.e13.
- [313] J. Salas-Salvadó, M. Bulló, N. Babio, M. Martínez-González, N. Ibarrola-Jurado, J. Basora, R. Estruch, M.I. Covas, D. Corella, F. Arós, V. Ruiz-Gutiérrez, E. Ros, Reduction in the incidence of type 2 diabetes with the Mediterranean diet: results of the PREDIMED-Reus nutrition intervention randomized trial, *Diabetes Care* 34 (1) (2011) 14–19.
- [314] P. Pérez-Martínez, A. García-Ríos, J. Delgado-Lista, F. Pérez-Jiménez, J.J.C.p.d. López-Miranda, Mediterranean diet rich in olive oil and obesity, metabolic syndrome and diabetes mellitus, 17(8) (2011) 769–777.
- [315] S.D. Holligan, S.G. West, S.K. Gebauer, C.D. Kay, P.M. Kris-Etherton, A moderate-fat diet containing pistachios improves emerging markers of cardiometabolic syndrome in healthy adults with elevated LDL levels, *Br. J. Nutr.* 112 (5) (2014) 744–752.
- [316] J.E. de la Rubia Ortí, M.P. García-Pardo, E. Drehmer, D. Sancho Cantus, M. Julián Rochina, M.A. Aguilar, L. Hu Yang, Improvement of main cognitive functions in patients with Alzheimer's disease after treatment with coconut oil enriched mediterranean diet: a pilot study, *J. Alzheimers Dis.* 65 (2) (2018) 577–587.
- [317] V. Berti, M. Walters, J. Sterling, C.G. Quinn, M. Logue, R. Andrews, D. C. Matthews, R.S. Osorio, A. Pupi, S. Vallabhajosula, R.S. Isaacson, M.J. de Leon, L. Mosconi, Mediterranean diet and 3-year Alzheimer brain biomarker changes in middle-aged adults, *Neurology* 90 (20) (2018) e1789 e98.
- [318] T. Ballarín, D. Melo van Lent, J. Brunner, A. Schröder, S. Wolfgruber, S. Altenstein, F. Brosseron, K. Buerger, P. Dechent, L. Dobisch, E. Düzel, B. Ertl-Wagner, K. Fliessbach, S.D. Freiesleben, I. Frommann, W. Glanz, D. Hauser, J.D. Haynes, M.T. Heneka, D. Janowitz, I. Kilimann, C. Laske, F. Maier, C.D. Metzger, M.H. Munk, R. Perneczky, O. Peters, J. Priller, A. Ramirez, B.-S. Rauchmann, N. Roy, K. Scheffler, A. Schneider, A. Spottke, E.J. Spruth, S.J. Teipel, R. Vukovich, J. Wiltfang, F. Jessen, M. Wagner, o.b.o.t.D.S. Group, Mediterranean Diet, Alzheimer Disease Biomarkers, and Brain Atrophy in Old Age, *Neurology* 96(24) (2021) e2920-e2932.
- [319] N. García-Casares, P. Gallego Fuentes, M.Á. Barbancho, R. López-Gigosos, A. García-Rodríguez, M. Gutiérrez-Bedmar, Alzheimer's disease, mild cognitive impairment and mediterranean diet. A systematic review and dose-response meta-analysis, *J. Clin. Med.* 10 (20) (2021) 4642.
- [320] A. Malhotra, R.F. Redberg, P. Meier, Saturated fat does not clog the arteries: coronary heart disease is a chronic inflammatory condition, the risk of which can be effectively reduced from healthy lifestyle interventions 51(15) (2017) 1111–1112.
- [321] M. Guasch-Ferré, Y. Zheng, M. Ruiz-Canela, A. Hruby, M.A. Martínez-González, C. B. Clish, D. Corella, R. Estruch, E. Ros, M. Fitó, C. Dennis, I.M. Morales-Gil, F. Arós, M. Fiol, J. Lapetra, L. Serra-Majem, F.B. Hu, J. Salas-Salvadó, Plasma acylcarnitines and risk of cardiovascular disease: effect of Mediterranean diet interventions, *Am. J. Clin. Nutr.* 103 (6) (2016) 1408–1416.
- [322] M. Ruiz-Canela, E. Toledo, C.B. Clish, A. Hruby, L. Liang, J. Salas-Salvadó, C. Razquin, D. Corella, R. Estruch, E. Ros, M. Fitó, E. Gómez-Gracia, F. Arós, M. Fiol, J. Lapetra, L. Serra-Majem, M.A. Martínez-González, F.B. Hu, Plasma branched-chain amino acids and incident cardiovascular disease in the PREDIMED trial, *Clin. Chem.* 62 (4) (2016) 582–592.
- [323] N. Cheng, L. Bell, D.J. Lamport, C.M. Williams, Dietary Flavonoids and Human Cognition: A Meta-Analysis, *Mol Nutr Food Res* (2022) e2100976.
- [324] G.C. Román, R.E. Jackson, R. Gadhia, A.N. Román, J. Reis, Mediterranean diet: The role of long-chain ω -3 fatty acids in fish; polyphenols in fruits, vegetables, cereals, coffee, tea, cacao and wine; probiotics and vitamins in prevention of stroke, age-related cognitive decline, and Alzheimer disease, *Rev. Neurol.* 175 (10) (2019) 724–741.
- [325] M. Simonetto, M. Infante, R.L. Sacco, T. Rundek, D. Della-Morte, A novel anti-inflammatory role of omega-3 PUFAs in prevention and treatment of atherosclerosis and vascular cognitive impairment and dementia, *Nutrients* 11 (10) (2019) 2279.
- [326] P.M. Solverson, T.R. Henderson, H. Debelo, M.G. Ferruzzi, D.J. Baer, J. A. Novotny, An anthocyanin-rich mixed-berry intervention may improve insulin sensitivity in a randomized trial of overweight and obese adults, *Nutrients* 11 (12) (2019) 2876.
- [327] M.L. Castro-Acosta, L. Smith, R.J. Miller, D.I. McCarthy, J.A. Farrimond, W. L. Hall, Drinks containing anthocyanin-rich blackcurrant extract decrease postprandial blood glucose, insulin and incretin concentrations, *J. Nutr. Biochem.* 38 (2016) 154–161.
- [328] A. Basu, K. Izuora, N.M. Betts, J.W. Kinney, A.M. Salazar, J.L. Ebersole, R. H. Scofield, Dietary strawberries improve cardiometabolic risks in adults with obesity and elevated serum LDL cholesterol in a randomized controlled crossover trial, *Nutrients* 13 (5) (2021).
- [329] S. Ahles, Y.R. Stevens, P.J. Joris, D. Vauzour, J. Adam, E. de Groot, J. Plat, The effect of long-term aronia melanocarpa extract supplementation on cognitive performance, mood, and vascular function: a randomized controlled trial in healthy, middle-aged individuals, *Nutrients* 12 (8) (2020).
- [330] G. Caruso, S.A. Torrisi, M.P. Mogavero, W. Currenti, S. Castellano, J. Godos, R. Ferri, F. Galvano, G.M. Leggio, G. Grosso, F. Caraci, Polyphenols and neuroprotection: Therapeutic implications for cognitive decline, *Pharmacol. Ther.* 232 (2022), 108013.
- [331] G. Caruso, J. Godos, A. Privitera, G. Lanza, S. Castellano, A. Chillemi, O. Bruni, R. Ferri, F. Caraci, G. Grosso, Phenolic acids and prevention of cognitive decline: polyphenols with a neuroprotective role in cognitive disorders and Alzheimer's disease, *Nutrients* 14 (4) (2022) 819.
- [332] C. Grinan-Ferre, A. Bellver-Sanchis, V. Izquierdo, R. Corpas, J. Roig-Soriano, M. Chillón, C. Andres-Lacueva, M. Somogyvari, C. Soti, C. Sanfeliu, M. Pallas, The pleiotropic neuroprotective effects of resveratrol in cognitive decline and Alzheimer's disease pathology: From antioxidant to epigenetic therapy, *Ageing Res. Rev.* 67 (2021), 101271.
- [333] A. Arinno, N. Apaijai, S.C. Chattipakorn, N. Chattipakorn, The roles of resveratrol on cardiac mitochondrial function in cardiac diseases, *Eur. J. Nutr.* 60 (1) (2021) 29–44.
- [334] S. Chen, X. Zhao, L. Ran, J. Wan, X. Wang, Y. Qin, F. Shu, Y. Gao, L. Yuan, Q. Zhang, M. Mi, Resveratrol improves insulin resistance, glucose and lipid metabolism in patients with non-alcoholic fatty liver disease: a randomized controlled trial, *Dig. Liver Dis.* 47 (3) (2015) 226–232.
- [335] K.J. Pearson, J.A. Baur, K.N. Lewis, L. Peshkin, N.L. Price, N. Labinsky, W. R. Swindell, D. Kamara, R.K. Minor, E. Perez, H.A. Jamieson, Y. Zhang, S.R. Dunn, K. Sharma, N. Pleshko, L.A. Woollett, A. Csiszar, Y. Ikeno, D. Le Couteur, P. J. Elliott, K.G. Becker, P. Navas, D.K. Ingram, N.S. Wolf, Z. Ungvari, D.A. Sinclair, R. de Cabo, Resveratrol delays age-related deterioration and mimics transcriptional aspects of dietary restriction without extending life span, *Cell Metab.* 8 (2) (2008) 157–168.
- [336] D. Bonnefont-Rousselot, Resveratrol and cardiovascular diseases, *Nutrients* 8 (5) (2016) 250.
- [337] N. Xia, U. Förstermann, H. Li, Resveratrol and endothelial nitric oxide, *Molecules* 19 (10) (2014) 16102–16121.
- [338] V.W. Dolinsky, J.R.B. Dyck, Calorie restriction and resveratrol in cardiovascular health and disease, *Biochimica et Biophysica Acta (BBA) - Molecular Basis of Disease* 1812 (11) (2011) 1477–1489.
- [339] J. Li, C.-X. Zhang, Y.-M. Liu, K.-L. Chen, G. Chen, A comparative study of anti-aging properties and mechanism: resveratrol and caloric restriction, *Oncotarget* 8 (39) (2017) 65717–65729.
- [340] D. Park, H. Jeong, M.N. Lee, A. Koh, O. Kwon, Y.R. Yang, J. Noh, P.-G. Suh, H. Park, S.H. Ryu, Resveratrol induces autophagy by directly inhibiting mTOR through ATP competition, *Sci. Rep.* 6 (1) (2016) 21772.
- [341] G. Chen, G. Ye, X. Zhang, X. Liu, Y. Tu, Z. Ye, J. Liu, Q. Guo, Z. Wang, L. Wang, S. Dong, Y. Fan, Metabolomics reveals protection of resveratrol in diet-induced metabolic risk factors in abdominal muscle, *Cell. Physiol. Biochem.* 45 (3) (2018) 1136–1148.
- [342] F. Vinciguerra, M. Graziano, M. Hagnäs, L. Frittitta, A. Tumminia, Influence of the mediterranean and ketogenic diets on cognitive status and decline: a narrative review, *Nutrients* 12 (4) (2020).
- [343] J. Perez-Guisado, A. Munoz-Serrano, A. Alonso-Moraga, Spanish Ketogenic Mediterranean Diet: a healthy cardiovascular diet for weight loss, *Nutr. J.* 7 (2008) 30.
- [344] D.D. Wang, E. Toledo, A. Hruby, B.A. Rosner, W.C. Willett, Q. Sun, C. Razquin, Y. Zheng, M. Ruiz-Canela, M. Guasch-Ferré, D. Corella, E. Gómez-Gracia, M. Fiol, R. Estruch, E. Ros, J. Lapetra, M. Fito, F. Aros, L. Serra-Majem, C.-H. Lee, C. B. Clish, L. Liang, J. Salas-Salvadó, M.A. Martínez-González, F.B. Hu, plasma ceramides, mediterranean diet, and incident cardiovascular disease in the PREDIMED trial (prevención con dieta mediterránea), *Circulation* 135 (21) (2017) 2028–2040.
- [345] P. Hernández-Alonso, D. Cañueto, S. Giardina, J. Salas-Salvadó, N. Cañellas, X. Correig, M. Bulló, Effect of pistachio consumption on the modulation of urinary gut microbiota-related metabolites in prediabetic subjects, *J. Nutr. Biochem.* 45 (2017) 48–53.
- [346] S. Tulipani, R. Llorach, O. Jáuregui, P. López-Uriarte, M. Garcia-Aloy, M. Bullo, J. Salas-Salvadó, C. Andrés-Lacueva, Metabolomics unveils urinary changes in subjects with metabolic syndrome following 12-week nut consumption, *J. Proteome Res.* 10 (11) (2011) 5047–5058.
- [347] A.P. Sobolev, A. Ciampa, C. Ingallina, L. Mannina, D. Capitani, I. Ernesti, E. Maggi, R. Businaro, M. Del Ben, P. Engel, A.M. Giusti, L.M. Donini, A. Pinto, Blueberry-based meals for obese patients with metabolic syndrome: a multidisciplinary metabolomic pilot study, *Metabolites* 9 (7) (2019) 138.
- [348] M. Draznin, V.R. Aroda, G. Bakris, G. Benson, F.M. Brown, R. Freeman, J. Green, E. Huang, D. Isaacs, S. Kahan, 9. Pharmacologic Approaches to Glycemic Treatment: Standards of Medical Care in Diabetes-2022, *Diabetes care* 45 (Supplement_1) (2022) S125-S143.
- [349] G. Xin, Z. Wei, C. Ji, H. Zheng, J. Gu, L. Ma, W. Huang, S.L. Morris-Natschke, J.-L. Yeh, R. Zhang, C. Qin, L. Wen, Z. Xing, Y. Cao, Q. Xia, Y. Lu, K. Li, H. Niu, K.-H. Lee, W. Huang, Metformin uniquely prevents thrombosis by inhibiting platelet activation and mtDNA release, *Sci. Rep.* 6 (1) (2016) 36222.
- [350] F. Forouzandeh, G. Salazar, N. Patrushev, S. Xiong, L. Hilemski, B. Fei, R. W. Alexander, Metformin beyond diabetes: pleiotropic benefits of metformin in attenuation of atherosclerosis, *J. Am. Heart Assoc.* 3 (6) (2014) e001202–e.
- [351] J. Li, J.P. Xu, X.Z. Zhao, X.J. Sun, Z.W. Xu, S.J. Song, Protective effect of metformin on myocardial injury in metabolic syndrome patients following percutaneous coronary intervention, *Cardiology* 127 (2) (2014) 133–139.
- [352] A. Martin-Montalvo, E.M. Mercken, S.J. Mitchell, H.H. Palacios, P.L. Mote, M. Scheibye-Knudsen, A.P. Gomes, T.M. Ward, R.K. Minor, M.-J. Blouin, M. Schwab, M. Pollak, Y. Zhang, Y. Yu, K.G. Becker, V.A. Bohr, D.K. Ingram, D. A. Sinclair, N.S. Wolf, S.R. Spindler, M. Bernier, R. de Cabo, Metformin improves healthspan and lifespan in mice, *Nat. Commun.* 4 (1) (2013) 2192.
- [353] M. Pierotti, F. Berrino, M. Gariboldi, C. Melani, A. Mogavero, T. Negri, P. Pasanisi, S.J.O. Pilotti, Targeting metabolism for cancer treatment and

- prevention: metformin, an old drug with multi-faceted effects, 32(12) (2013) 1475–1487.
- [354] Y. Wang, H. An, T. Liu, C. Qin, H. Sesaki, S. Guo, S. Radovick, M. Hussain, A. Maheshwari, F.E. Wondisford, B. O'Rourke, L. He, Metformin improves mitochondrial respiratory activity through activation of AMPK, *Cell Rep.* 29 (6) (2019) 1511–1523.e5.
- [355] Y. Hattori, K. Hattori, T. Hayashi, Pleiotropic benefits of metformin: macrophage targeting its anti-inflammatory mechanisms, 64(6) (2015) 1907–1909.
- [356] M. Maulidiani, F. Abas, R. Rudiyanto, N.H.A. Kadir, N.K.Z. Zolkeflee, N.H. Lajis, Analysis of urinary metabolic alteration in type 2 diabetic rats treated with metformin using the metabolomics of quantitative spectral deconvolution 1H NMR spectroscopy, *Microchem. J.* 153 (2020), 104513.
- [357] H.W. Kim, Metabolomic approaches to investigate the effect of metformin: an overview, *Int. J. Mol. Sci.* 22 (19) (2021).
- [358] D.S. Hsia, O. Grove, W.T. Cefalu, An update on sodium-glucose co-transporter-2 inhibitors for the treatment of diabetes mellitus, *Curr. Opin. Endocrinol. Diabetes Obes.* 24 (1) (2017) 73–79.
- [359] S. Shaikh, S.M.D. Rizvi, S. Shakil, S. Riyaz, D. Biswas, R. Jahan, Forxiga (dapagliflozin): Plausible role in the treatment of diabetes-associated neurological disorders, *Biotechnol. Appl. Biochem.* 63 (1) (2016) 145–150.
- [360] H. Liu, V.S. Sridhar, D. Montemayor, L.E. Lovblom, Y. Lytvyn, H. Ye, J. Kim, M. T. Ali, D. Scarr, P.R. Lawler, B.A. Perkins, K. Sharma, D.Z.I. Cherney, Changes in plasma and urine metabolites associated with empagliflozin in patients with type 1 diabetes, *Diabetes Obes. Metab.* 23 (11) (2021) 2466–2475.
- [361] S. Mulder, H.J.L. Heerspink, M. Darshi, J.J. Kim, G.D. Laverman, K. Sharma, M. J. Pena, Effects of dapagliflozin on urinary metabolites in people with type 2 diabetes, *Diabetes Obes. Metab.* 21 (11) (2019) 2422–2428.
- [362] E. Bletsas, S. Filippas-Dekouan, C. Kostara, P. Dafopoulos, A. Dimou, E. Pappa, S. Chasapi, G. Spyroulias, A. Koutsovasilis, E. Bairaktari, E. Ferrannini, V. Tsimihodimos, Effect of dapagliflozin on urine metabolome in patients with Type 2 diabetes, *J. Clin. Endocrinol. Metab.* 106 (5) (2021) 1269–1283.
- [363] R. Feinman, Ketogenic Diets, Ketoacidosis and SGLT-2 Inhibitors - Part 2, 2020. <https://www.nmsociety.org/sglt-2-inhibitors-part-2>. (Accessed 18/7/2020 2020).
- [364] P.S. Garay, G. Zuniga, R. Lichtenberg, A Case of Euglycemic Diabetic Ketoacidosis Triggered by a Ketogenic Diet in a Patient With Type 2 Diabetes Using a Sodium–Glucose Cotransporter 2 Inhibitor, (2020) cd190055.
- [365] S. Adimadhyam, T.A. Lee, G.S. Calip, D.E. Smith Marsh, B.T. Layden, G. T. Schumock, Sodium-glucose co-transporter 2 inhibitors and the risk of fractures: A propensity score-matched cohort study, *Pharmacoepidemiol. Drug Saf.* 28 (12) (2019) 1629–1639.
- [366] G.D. Femminella, E. Frangou, S.B. Love, G. Busza, C. Holmes, C. Ritchie, R. Lawrence, B. McFarlane, G. Tadros, B.H. Ridha, C. Bannister, Z. Walker, H. Archer, E. Coulthard, B.R. Underwood, A. Prasanna, P. Koranteng, S. Karim, K. Junaid, B. McGuinness, R. Nilforooshan, A. Macharouthu, A. Donaldson, S. Thacker, G. Russell, N. Malik, V. Mate, L. Knight, S. Kshemendran, J. Harrison, D.J. Brooks, A.P. Passmore, C. Ballard, P. Edison, Evaluating the effects of the novel GLP-1 analogue liraglutide in Alzheimer's disease: study protocol for a randomised controlled trial (ELAD study), *Trials* 20 (1) (2019) 191.
- [367] M. Vargas-Soria, M.J. Carranza-Naval, A. del Marco, M. Garcia-Alloza, Role of liraglutide in Alzheimer's disease pathology, *Alzheimers Res. Ther.* 13 (1) (2021) 112.
- [368] A.s. Society, Testing the effect of the diabetes drug Liraglutide in Alzheimer's disease: Research Project: Evaluating the effects of the novel GLP-1 analogue, Liraglutide, in patients with Alzheimer's disease (ELAD) study, 2021. <https://www.alzheimers.org.uk/research/our-research/research-projects/testing-effect-diabetes-drug-liraglutide-alzheimers-disease#:~:text=Recently%2C%20a%20drug%20used%20to,a%20hallmark%20of%20the%20disease>. (Accessed 11/06/2022 2022).
- [369] J.M. Carosi, T.J. Sargeant, Rapamycin and Alzheimer disease: a double-edged sword? *Autophagy* 15 (8) (2019) 1460–1462.
- [370] M. Kaeberlein, V. Galvan, Rapamycin and Alzheimer's disease: Time for a clinical trial? *Sci. Transl. Med.* 11 (476) (2019) eaar4289.
- [371] W. Zhou, S. Ye, Rapamycin improves insulin resistance and hepatic steatosis in type 2 diabetes rats through activation of autophagy, *Cell Biol. Int.* 42 (10) (2018) 1282–1291.
- [372] E. Quarles, N. Basisty, Y.A. Chiao, G. Merrihew, H. Gu, M.T. Sweetwyne, J. Fredrickson, N.-H. Nguyen, M. Razumova, K. Kooiker, F. Moussavi-Harami, M. Regnier, C. Quarles, M. MacCoss, P.S. Rabinovitch, Rapamycin persistently improves cardiac function in aged, male and female mice, even following cessation of treatment, *Aging Cell* 19(2) (2020) e13086.